



**International
House**
London

TEACHER

TRAINING

2020

Teach the world


Take a virtual tour of the school
 See page 7

CONTENTS

- 10 reasons to choose IH London2
- Our central London location4
- Our school and services6
- Steps to success 8
- Our trainers 10
- Your teaching career 14
 - Start Teaching 16
 - Qualified Teachers 24
 - Trainers and Managers44
 - Schools and Organisations48
- Discover London.....56
- Accommodation 60
- Online training66
- Book your course68

TRAIN WITH THE NUMBER ONE LANGUAGE SCHOOL IN CENTRAL LONDON

Teacher training and development courses for every stage of your teaching career.

Our story began in 1953, with our founders John Haycraft (CBE) and his wife Brita Haycraft, who started a school because they believed in intercultural understanding through language learning. Our founders pioneered the first qualification for teaching English as a foreign language: it is now known as the CELTA and assessed by the University of Cambridge.

We have continued their mission and changed people's lives through language teaching for over 65 years. We have the expertise and passion to help you achieve everything you want to through teaching English.

Travel the world, experience different cultures, succeed in your career – your story starts here.



10 REASONS TO CHOOSE IH LONDON

At IH London, we really believe in the best teaching and always have. We are a charitable trust and our founders created the very first EFL qualification, now known as the CELTA.

Our teaching experts speak at world-famous teaching events such as IATEFL and many of the leading ELT coursebooks have been produced by International House trainers past and present, for example *New Cutting Edge* and *English Unlimited*.

IH London is at the forefront of innovation and training. We host a Future of Training Conference, where trainers from all over the world speak about new ideas, practices, and methodologies in training.

1 We are the no. 1 language school in central London, judged by British Council inspections.

2 We have always championed the best teaching. International House London was the birthplace of the first qualification for teaching English as a second language. This then became the CELTA qualification accredited by Cambridge English (part of the University of Cambridge) and is recognised throughout the world.

7 Our experts build bespoke training programmes for schools and organisations across the globe.

8 We train teachers at every stage of their career: from learning to teach to the most advanced practitioners. We offer a range of courses, to suit all schedules, interests and ambitions. This includes full-time intensive study, part-time modular courses and short courses.

3 We are the best value school in London (ranked by the industry publication EL Gazette).

4 Training with IH London means you become part of the IH network, which is the largest network of independent schools in the world: over 160 schools, in over 52 countries.

9 Our school is located in the beautiful Covent Garden, in central London. Everything London has to offer can be reached from our front door. Our modern air conditioned school has nine floors with a library, café, computer centre, comfortable social spaces, reception, and 53 fully equipped large bright classrooms.

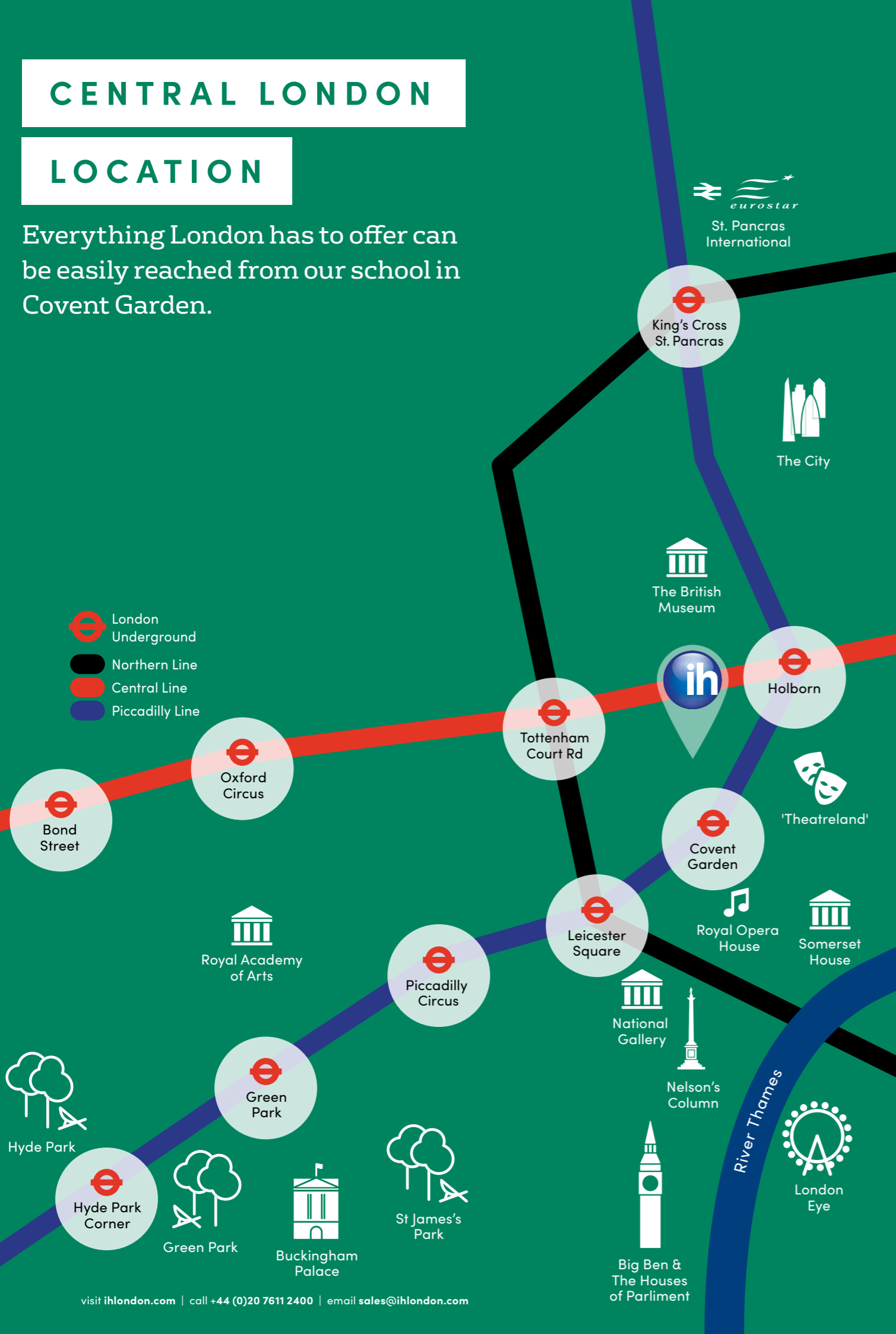
10 International House London is a charitable trust and we reinvest operating surplus to improve your teacher training experience.

CENTRAL LONDON

LOCATION

Everything London has to offer can be easily reached from our school in Covent Garden.

-  London Underground
-  Northern Line
-  Central Line
-  Piccadilly Line



Discover London with activities and trips arranged for you. See page 56.



COVENT GARDEN AND BEYOND

We are based in the beautiful Covent Garden in central London, famous for its shops, cafés, restaurants and West End theatres.

Within a short walking distance you will also find the Royal Opera House (home to the Royal Ballet, as well as the Royal Opera), the British Museum (voted one of the top ten museums in the world by National Geographic) and The National Gallery (the story of European art, masterpiece by masterpiece).

As the writer Samuel Johnson said: "When you are tired of London, you are tired of life". You will never find yourself short of things to do in this cultural capital.

Thousands of unique restaurants, trendy rooftop bars, concerts across the city, and free national museums and galleries, make you feel part of big city life every single day of the year.

There are several tube stops within a 5-minute walk of our school, and we are only two tube stops away from Kings Cross St Pancras International for an easy first arrival in the UK.

OUR SCHOOL AND SERVICES

We are committed to providing the very best learning environment. We believe in bringing people together, helping people feel part of something bigger, and promoting international communication.

BENEFITS OF STUDYING WITH IH LONDON

9		Floor 5: The Executive Centre
8		Floor 4: One-to-one, small group and large group classrooms
7		Floor 3: Large group classrooms
6		Floor 2: Large group classrooms
5		Floor 1: Large group classrooms
4		Mezzanine: Exam offices
3		Upper ground: Library/offices
2		Ground: Reception/café/learning centre
1		Basement: Teaching resource centre

TAKE THE VIRTUAL TOUR

Simply download the app 'VR Direct' on your smartphone, put in the code 'gl4ilp' and voilà! If you'd like a pair of (free) IH London VR goggles, please contact sales@ihlondon.com.

YOUR COURSE

- All course materials are included.
- Certificate of Studies with every course to add to your CV.
- A range of full-time intensive study, part-time modular courses and short courses.
- We train teachers at every level of their career, from learning to teach to the most advanced practitioner.
- Our experts can create bespoke courses for organisations across the globe.

YOUR ENVIRONMENT

- Our ELT library offers excellent resources with over 10,000 books, journals and digital resources for you to use.
- Both our library and learning centre are staffed with support available.
- 53 fully equipped large airy classrooms with interactive whiteboards.
- On-site café and social spaces. The café sells a wide range of delicious food, snacks and beverages, from breakfast until the evening. All food is prepared fresh each day.
- Learning centre with computers.
- The entire school is air conditioned.
- Free wi-fi throughout.
- Printing available from our computers.

CAREER SUPPORT AFTER YOUR COURSE

- Training with IH London means you become part of the IH network, which is the largest network of independent schools in the world: over 160 schools, in over 52 countries.
- You will be able to join our members only 'Trained by IH London' online group and be part of our global community.
- We stay in touch with our teachers to share industry news and career opportunities.
- We also love to see teachers sharing their stories, tips and support with each other.
- Share ideas and experiences with people on the course and stay in touch with an international network of teachers.

TEACHER TRAINING CONFERENCE

- We hold an annual teacher training conference at our London school.
- We invite people to speak on their area of expertise, alongside famous ELT names like Adrian Underhill.
- We help shape the industry with topics such as The Future of Training. We want you to be part of that discussion.
- You can also find our experts at world-famous teaching events such as IATEFL.

STEPS TO SUCCESS

International House London is a charitable trust and we continue the aims of our founders: to promote intercultural understanding and teaching standards within education.

At IH London we believe in:

- › communication without borders
- › connecting the world
- › educating beyond language
- › building communities across cultures
- › bringing people together
- › broadening horizons
- › helping people feel part of something bigger
- › promoting international communication
- › inspiring people to be the best they can be

POLISH 3%

FRENCH 3%

TURKISH 4%

BRAZILIAN 5%

ITALIAN 8%

CHINESE 13%

SPANISH 13%

BRITISH 18%

A MIX OF OVER 80 OTHER NATIONALITIES 33%

Data is for 2018 as our 2020 brochures are produced in the middle of 2019.

OUR COURSES

We will help you learn and progress by designing well-structured courses with innovative teaching and training methods.

YOU ARE AN INDIVIDUAL

Before enrolling we will listen to your needs and give you guidance on choosing the right course.

WE KEEP YOU INFORMED

You will be given clear and accurate information about all aspects of your course, assessment (if applicable) and other services.

OUR TEACHER TRAINERS

You will be taught by highly qualified and experienced teacher trainers. All our trainers take part in regular professional development, so their skills are up-to-date with fresh new ideas.

OUR SENIOR ACADEMIC TEAM

Our teacher trainers are backed by skilled education managers to help you have the best possible experience at IH London.

FEEDBACK AND IMPROVEMENT

On assessed courses, your learning will be regularly reviewed and you will be given helpful feedback. On all courses you will have opportunities to discuss how to improve your teaching.

WE LISTEN TO YOU

You will be encouraged to give us feedback so we can continue to improve your experience while you are training with us and for future courses.

OUR DIVERSITY

Diversity is celebrated at International House London and we treat everybody fairly and equally. Last year, we welcomed people from 89 nationalities on our teacher training courses.

OUR

TRAINERS

We believe in inspiring people to be the best they can be.

ADRIAN UNDERHILL
Expert Series Trainer and Trustee at IH London

Adrian is a world-renowned ELT Consultant and Trainer. Adrian is an author and the series editor of the MacMillan Books for Teachers. He is well known for his book *Sound Foundations* and his inspiring talks on how to understand the phonemic chart. His pronunciation chart was developed into an app for students and teachers and won an industry award. Adrian takes a holistic approach to teaching and teacher training and is a frequent conference speaker.



CHARLOTTE THOMPSON
Director of Training

Charlotte has been teaching for 28 years. She ensures all our teacher trainers are at the forefront of their profession. Charlotte trained in the UK and spent the first ten years of her career in Japan. She has taught all ages from kindergarten to adults, and worked in different contexts from schools to companies. She became a teacher trainer for CELTA and Delta and has been working for IH London for 15 years.



JONATHAN SPALTON
CELTA Trainer

Jonathan has been teaching English since 2005 across the full range of learner levels, including specialist classes and exam preparation. He also has two years' experience teaching young learners aged 6-15 in Japan. Jonathan passed his Delta in 2011 and has been training teachers since 2012, including CELTA training and bespoke courses for qualified teachers. He delivered a bespoke course for 120 secondary teachers in Nepal in 2016. He worked with teachers from Senegal in 2019 on a teacher training project and supported teachers in local schools.



JESSICA ANDREWS
Assistant Director of Training

Jessica completed her CELTA course at IH London in 2006 and fell in love with teaching English. She has been teaching and training for 12 years. Jessica is CELTA and Delta qualified and is a certified Cambridge CELTA assessor. She has trained teachers in Peru, Brazil and China. Jessica delivers a variety of tailor-made specialised training courses for teachers from the Basque country and Brazil.



KATHY HILL
CELTA Trainer

Kathy has been teaching English since 1996 across all levels and special focus classes, including Business English and a University Foundation Programme. She has taught English in companies in Spain and Chile, and she has taught young learners in Argentina. Kathy has been training teachers for over 10 years, including CELTA and bespoke courses for qualified teachers. She is particularly focused on learner motivation and writing skills. She speaks at international teaching conferences.



PAULETTE MILEGO
Distance Delta Programme Manager

Paulette first trained as a teacher in 1984 at IH London. 10 years later Paulette was training up new teachers in the same classroom. Paulette has taught and trained in Turkey, Spain, Brazil, Kenya and Russia. She is now based at IH London, but still works with teachers all over the world through our distance training programme. Paulette works directly with Cambridge English, part of the University of Cambridge, on their Delta qualifications for Modules 1, 2 and 3.



CAROLINE TURNER
Assistant Director of Studies

Caroline has been teaching English since 2009 and has taught from beginner to advanced level, including special skills focus classes and exam preparation classes for IELTS and Cambridge Exams. She has been teacher training since 2013 and is a CELTA trainer. In China, Caroline delivered IELTS focussed training to university students and coached teachers on speaking and writing skills.





JOANNA STANFIELD
CELTA and Delta Trainer

Joanna has been teaching English since 2003 and has taught from beginners to advanced levels. Joanna also has one year's experience in the state education sector, assisting asylum seekers, refugees and young adults with special educational needs. She also has a year's experience teaching young learners from age 7 in Italy. Joanna started training teachers in 2009, and she is a CELTA and Delta trainer. She also trains on bespoke courses for teachers.

ANNE TIMSON
CELTA and Delta Trainer

Anne has worked at International House, London (on and off) since 1992. She now works as a Course Coordinator on the Distance Delta, and as a tutor on the CELTA award. As a teacher, she has specialised in Business English and English for Specific Purposes (mainly Law). She has wide experience in the public sector as well, ranging from teaching basic literacy to ESOL learners to teaching English for Academic Purposes on pre-sessional Masters programmes.



RI WILLOUGHBY
CELTA and Delta Trainer

Ri has been teaching English since 2000, across all levels, and she also teaches Business English and exam preparation classes. Ri has a specific interest in conversation and pronunciation. Ri taught young learners aged 6 and above in Spain for two years. Ri has been a teacher trainer since 2005 and teaches bespoke courses to teachers, including specialist subjects such as CLIL and teaching one-to-one. She is also a CELTA and Delta trainer and works on our partner courses at King's College London.

CATHY ELLIS
CELTA and Delta Trainer

Cathy has been a teacher trainer for over 30 years and has taught and trained in Spain, Poland, Brazil, the Republic of Georgia, the UK and Canada. Cathy is a trainer for CELTA and Delta and is an assessor for both courses. She also works for Cambridge Assessment as a Delta Module 1 exam marker, and a moderator and assessor for Delta Module 2.

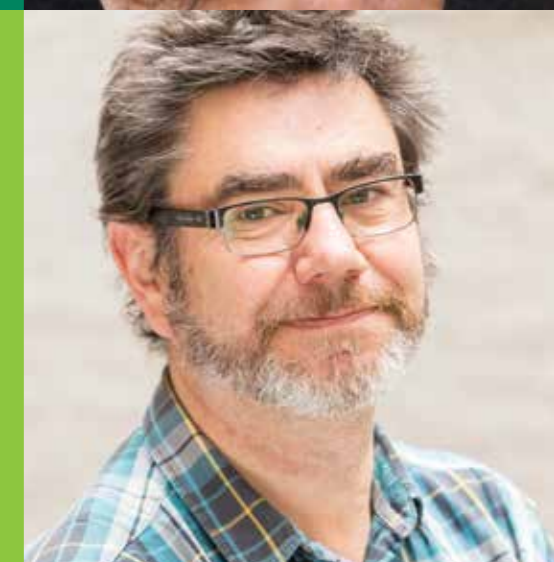


DANNY NORRINGTON-DAVIES
CELTA and Delta Trainer

Danny started teaching English over 16 years ago in Botswana and gained his CELTA in the UK in 1995. He worked with Japanese volunteers in Malawi before returning to London to complete his Delta. He has taught in Argentina, South Africa and Thailand. Danny has been with IH London since 2007. He is a CELTA and Delta trainer and works on programmes at King's College London. He is the author of a teaching methodology book, *From Rules to Reasons*, which was short listed for an ELTON award. He works on our partner courses at King's College London.

DUNCAN MACKENZIE
CELTA and Delta Trainer

Duncan has been a regular trainer with IH London and joined us permanently in 2006. He has been a teacher trainer in Prague, Spain and Argentina. As well as CELTA and Delta, he is a tutor on Teaching Knowledge Test (TKT), CLIL and Training the Trainer courses. He also works for Cambridge ESOL as a Delta Module 1 exam marker.



MELISSA LAMB
CELTA and Delta Trainer

Melissa started her teaching career in China in 1998. She completed her CELTA and worked as the Director of Studies for IH Shanghai and later for the British Council in Beijing. She gained her Delta at IH London. Melissa now trains on both Celta and DELTA courses and has delivered teacher training in Brazil, Trinidad and Tobago. Melissa is a frequent conference presenter.

JAN MADAKBAS
CELTA and Delta Trainer

Jan has been at IH London since 2001 and before that worked in Moscow and Istanbul as a teacher and Director of Studies. He is a CELTA and Delta trainer and runs Academic Management Courses. He is a coordinator for the online Distance Delta Programme and a school inspector for EAQUALS. He has been involved in designing and writing online materials for IH London and overseas clients. He is a Cambridge ESOL marker for DELTA Module 3.



YOUR TEACHING

CAREER

We have a course for every stage of your teaching career and for the teaching path you want to take.

Training with IH London means you become part of the IH family, which is the largest network of independent schools in the world: over 160 schools, in over 52 countries.

START TEACHING

CELTA
Page 16 →

QUALIFIED TEACHERS

CertIBET
Page 25 →

SHORT COURSES
Page 26 →

DELTA
Page 37 →

TRAINERS AND MANAGERS

ACADEMIC MANAGEMENT TRAINING
Page 45 →

TEACHER TRAINER DEVELOPMENT
Page 46 →

BUSINESS CULTURAL TRAINERS CERTIFICATE (BCTC)
Page 47 →

SCHOOLS AND ORGANISATIONS

BESPOKE TRAINING PROGRAMMES FOR SCHOOLS
Page 48 →

EXAMPLE COURSES FOR YOUR SCHOOL
Page 54 →



Very professional and made me look forward to my future as an ESL teacher!

Ayesha Patel, Blended CELTA

LEARN TO TEACH WITH A TOP LANGUAGE SCHOOL

We are the no. 1 language school in central London, judged by the latest British Council inspections. Our trainer to CELTA trainee ratio is 1:5, so you receive the attention you need to become a great teacher and we keep class sizes small (a maximum of 15 participants).

FREE OPEN AFTERNOONS

Find out more about teaching English as a foreign language and how to get started as an English language teacher. The sessions held at our school are led by our experienced trainers who have worked in different schools around the world. Visit our website or contact us for dates.

CAREER ADVICE FOR NEW TEACHERS

We offer career guidance to our CELTA graduates and we are part of IH World, a network of over 160 independent schools in over 52 countries. During your course, you will receive a careers talk, with interview tips and where to find teacher jobs.

We also invite you to join our 'Trained by IH London' online group. You can stay connected to people you met on the course, connect and learn from fellow teachers at different stages of their career, receive learning resources from IH London, hear about the latest vacancies, and share travel and teaching stories.

We offer employment to strong candidates from our CELTA courses in our young learner centres and our adult London school.

CELTA GRADUATES CAN LEARN A NEW LANGUAGE FOR FREE

Get ready for your new career and travel adventures by learning a new language or refreshing your skills at no extra cost. You can book your place within three months of completing your CELTA. We teach Arabic, French, German, Greek, Italian, Japanese, Korean, Mandarin, Portuguese, Russian and Spanish (check our website for all languages offered). You get a free six week evening course included with your CELTA.

START TEACHING

Learn to teach English as a foreign language and travel the world.

We are the home of CELTA. Worldwide, the CELTA is the industry standard for teachers.

We have always valued the very best teaching. Our founders, John and Brita Haycraft, wrote the first qualification for teaching English as a foreign language, which became the CELTA. Today it is awarded by Cambridge Assessment English, part of the University of Cambridge.

Whether you want to teach for a summer, a year, or a lifetime, the skills learned during a CELTA course with IH London will boost your CV and career – and open up a world of possibilities to teach and travel.

* www.ihlondon.com/teacher-training/start-teaching/learn-to-teach-with-the-celta

Watch the
CELTA video
on our website*

WHAT WILL YOU

GAIN WITH A CELTA?

- › The CELTA (Certificate in Teaching English to Speakers of Other Languages) is the most widely recognised TEFL (Teaching English as Foreign Language) qualification in the world.
- › The CELTA qualification is recognised by the British Council and will enable you to teach in English language schools across the globe.
- › The CELTA is awarded by Cambridge Assessment English, part of the University of Cambridge, which makes it prestigious and schools looking to employ you know you have been trained to a high standard.
- › The CELTA is the teaching qualification asked for by 9 out of 10 English language teacher employers in the UK and 7 out of 10 worldwide (source: Cambridge English).
- › The CELTA is an intensive course, with our graduates qualified and confident to teach anywhere in the world.
- › The CELTA doesn't expire so you will be a qualified English language teacher for life.

”

I was attracted to the CELTA for a variety of reasons. It was the highest qualification I could get in a month for teaching, it was very intensive, and it helped me prioritise where I wanted to be going with my life. I've been tremendously impressed.

Alexander, CELTA



START YOUR ADVENTURE

The CELTA is your passport to a new career, amazing experiences and travel.

We have a range of CELTA training options, including full-time, part-time, and online.

You don't need to pay for the CELTA when you apply. Once you have been accepted, your application is valid six months. You can apply now, then book and pay for the course later.

WHO IS A CELTA FOR?

Anyone who would like to start teaching English as a second language as a new career, to travel, or for both. This course is also suitable for people who have some teaching experience but would like training and the CELTA qualification.

You will need to have a proficient level of English to begin the course.

“It was incredibly interesting and helpful for my teaching career development.

Angela Pia Pistillo, CELTA

Free online
Grammar for
Teachers
course when you
book your CELTA

WHAT WILL I LEARN ON A CELTA COURSE?

- ✓ Understand the principles of effective teaching and acquire practical teaching skills
- ✓ Learn how to analyse language for teaching
- ✓ Understand how adults learn and the role of the teacher and the learner
- ✓ Learn how to develop your knowledge and skills
- ✓ Gain confidence and professional knowledge

“The CELTA at IH London was recommended by everyone I spoke to. It seems to have an unrivalled reputation. The CELTA was very demanding but even more rewarding. It has proved an excellent vehicle for travelling the world.

William, CELTA

WHAT IS THE CELTA COURSE LIKE?

There is a focus on communication and the communicative teaching approach, learning through tasks. This is reflected in the tasks we ask our trainees to do in the classroom with their students, and also in the way that we train our trainees in the training room.

There is lots of group work and discussion, and creativity in designing activities for students.

The course has five topics:

- › Learners and teachers and the teaching and learning context
- › Language analysis and awareness
- › Language skills: reading, listening, speaking and writing
- › Planning and resources for different teaching contexts
- › Developing teaching skills and professionalism

The course includes:

- › Teaching practice at IH London
- › Observation of qualified teachers
- › Detailed feedback with tutors
- › Seminars
- › Access to our ELT library
- › Free online Grammar for Teachers course you have access to from the day you book
- › Access to our online teacher training DVD series – 15 teaching videos with accompanying lesson plans that you can access from home
- › 120 hours of lessons (plus 120 hours of self-study)
- › Career advice talk at the end of your course
- › ‘Trained by IH London’ facebook alumni group
- › Inclusive pricing. No hidden costs with IH London.

To receive a CELTA certificate you will need to complete the course and meet the assessment criteria for all written and practical assignments. You will be assessed on 6 hours of teaching practice and 4 written assignments. There are three passing grades: Pass A, Pass B and Pass.

“I've worked in corporate big companies for nearly 30 years and I want a different career, and to work and travel in South America. My two pieces of advice are: enjoy it, because it's a really fun positive experience; and it is intense for the 4 weeks you are doing the course, but it's worth it.

Mark, CELTA

CELTA graduates
can learn a new
language free

CHOOSE THE CELTA

OPTION THAT SUITS YOU

Every year we train over 500 new teachers and they begin their exciting journey inspiring others and connecting people from all over the world.

FULL-TIME

CELTA

Be CELTA-qualified in just 4 weeks.

COURSE SUMMARY

Course hours:	120 (30 per week)
Course days:	Monday to Friday
Maximum class size:	15 (1:5 trainer to trainee ratio)
Lesson times:	Choose 09.00 – 16.00 or 10.30 – 18.00 (11.30–18.30 in July and August)
2020 dates:	06 – 31 January 03 – 28 February 02 March – 27 March 30 March – 24 April (includes Saturday 04 April) 27 April – 22 May 01 June – 26 June 06 July – 31 July 03 – 28 August 01 – 25 September (starts on a Tuesday) 28 September – 23 October 26 October – 20 November 23 November – 18 December

*No classes on UK bank holidays.

PART-TIME

CELTA

Perfect for qualifying around other commitments, with evening and Saturday classes over 12 weeks.

COURSE SUMMARY

Course hours:	120 (6 per week, plus 7 Saturdays during the course)
Course days:	Monday and Wednesday or Tuesday and Thursday (plus 7 Saturdays)
Maximum class size:	15 (1:5 trainer to trainee ratio)
Lesson times:	Weekdays: 18.30 – 21.30 Saturdays: 10.00 – 17.00
2020 dates:	11 January – 04 April (Mon/Wed) 07 March – 30 May (Tues/Thurs) 18 April – 11 July (Mon/Weds) 16 May – 08 August (Tues/Thurs) 13 June – 05 September (Mon/Weds) 15 August – 07 November (Tues/Thurs) 12 September – 05 December (Mon/Weds) 31 October 2020 – 06 February 2021 (Tues/Thurs)

BLENDED

CELTA

Combine face-to-face learning with online studying at times that suit you over 13 weeks.

COURSE SUMMARY

Lessons per week:	6 hours face-to-face
Course days:	Tuesday and Thursday plus online self-study (Sunday start dates)
Maximum class size:	15 (1:5 trainer to trainee ratio)
Lesson times:	Weekdays: 18.30 – 21.30 17 sessions at the school and 15 hours of online work each week, plus self-study
2020 dates:	02 February – 03 May 16 August – 15 November

”

I frequently tell people that my CELTA qualification from IH is the most challenging – and most rewarding – achievement on my CV. It has allowed me to follow my dream of moving to Japan, teaching elementary school children and adults, and it continues to open doors for me.

Alex, CELTA

APPLY

NOW

Don't let your dream to change your career or travel (or both) slip away. We have early booking savings available – ask our sales team for more information.

1. Apply online or email sales@ihlondon.com for the application form, which includes a language awareness task.
2. You will then have an interview face-to-face, by phone or via Skype with IH London.
3. Once you have been accepted, your application is valid for six months. You can apply now, then book and pay for the course later.

“

I had no previous teaching experience. I feel the course has given me an excellent foundation for starting to teach.

Louise Gray, CELTA

”

The interview process was great. They were very flexible with the time of the interview and it took about 40 minutes. The interviewer was very friendly and welcoming. I found out later on that day that I was accepted for the course.

Alexander, CELTA

LEARN TO TEACH

ANOTHER LANGUAGE

We also train teachers of other modern languages. Learn to teach French, Italian or Spanish as a foreign language and gain a European Teaching Qualification. Visit ihlondon.com for details.

”

After CELTA, the world is your oyster! Doing the CELTA at IH London was an eye-opener for me; I am absolutely sure that being a teacher is my dream job.

Simone, CELTA

PARTNERSHIP WITH

KING'S COLLEGE LONDON: MA TESOL

International House London has a unique partnership with King's College London to provide a joint MA TESOL (Teaching English to Speakers of Other Languages) with a practical certificate in ELT.

The graduate course takes 1 year full-time and 2 years part-time. Lectures and seminars are taught by King's College London and classroom-based teaching and assessment takes place at IH London.

The course is designed for people new to teaching, so you don't need teaching experience to begin the course, but you do need a 2:1 degree or higher (or international equivalent) in a relevant subject.



Visit the King's College London website for more details and to apply.

ihlondon.com/start-teaching



QUALIFIED TEACHERS

As a teacher you know there is always something new to learn. We run short training courses in London, so you can take a couple of weeks out to recharge and enhance your learning.

Summer
and Winter
short courses
available

SHORT COURSES IN LONDON

Join our experts and other EFL teachers for a short course in London. Learn, share ideas and expand your global teaching network for inspiration and support.

ERASMUS+ FUNDING

You might qualify for Erasmus+ funding and all our short development courses in London are eligible. View our online Erasmus+ Funding Guide for more details: ihlondon.com/funding-for-teachers

CERTIFICATE IN INTERNATIONAL BUSINESS ENGLISH TRAINING

Qualify to teach Business English and gain your CertIBET.

COURSE SUMMARY

English level:	C1 (advanced) and above
Course length:	2 weeks
Maximum class size:	12
Course hours:	50
Course days:	Monday to Friday
Winter 2020 dates and class times:	20 January – 31 January (09.00 – 12.00 and 13.15 – 15.15)
Summer 2020 dates and class times:	17 August – 28 August (09.00 – 12.00 and 13.15 – 15.15)

WHO IS THIS COURSE FOR?

This course is aimed at teachers who want to teach Business English to clients and gain a recognised qualification. We offer this course to prepare you to enter the English UK the CertIBET assessment.

This new international qualification is jointly validated and managed by English UK and LanguageCert.



COURSE OUTLINE

This is an intensive course with morning and afternoon study sessions that will cover both theoretical and practical areas of teaching Business English.

The course covers many areas such as: concepts and language in a business context; approaches, methods and techniques; teaching skills for meetings and negotiations; using the telephone for business purposes and presentations.

WHAT WILL YOU ACHIEVE?

Take this course to:

- ✓ Acquire the necessary knowledge to submit an assignment for the Cert IBET international qualification
- ✓ Gain familiarity with current best practice in teaching Business English
- ✓ Learn how to adapt your approach to the specific needs of corporate and individual clients

Download
a sample timetable for
any of our short courses
at ihlondon.com
or contact
sales@ihlondon.com

ihlondon.com/ibet



CURRENT

TRENDS

Explore new teaching methodology and how to use it.



COURSE SUMMARY

English level:	C1 (advanced) and above
Course length:	2 weeks
Maximum class size:	15
Lessons:	30 (55 minutes each)
Course days:	Monday to Friday
Winter 2020 dates and class times:	06 January – 17 January (09.00 – 12.00)
Summer 2020 dates and class times:	20 July – 31 July (13.15 – 16.15) 17 August – 28 August (13.15 – 16.15)

WHO IS THIS COURSE FOR?

This course is for experienced teachers who are working in a secondary or adult context. It is perfect for those who want to update their understanding of contemporary ELT methodologies and implement them in their classroom.



I think the courses help teachers to develop their skills. The courses are outstanding.

Nida Hussain,
Current Trends

COURSE OUTLINE

The course will help you gain a deeper understanding of the methodology of English language teaching and learn practical techniques. Your tutor will select the topics for your course based on your interests. Popular topics for this course are:

- › Flipped Learning
- › Digital learning resources
- › Task-based learning
- › The Lexical Approach (including its principles and view of language)
- › Teaching large and mixed ability groups
- › Learner autonomy, integrating speaking, listening, reading and writing skills
- › Dealing with emerging language
- › Content and Language Integrated Learning (CLIL)
- › Motivation theories and motivating learners in the classroom
- › Exploiting authentic and non-authentic listening and reading texts
- › Teaching Unplugged and Dogme

WHAT WILL YOU ACHIEVE?

Take this course to:

- ✓ Learn more about current approaches and methods
- ✓ Explore the principles and practices underpinning current trends
- ✓ Experience and evaluate practical teaching ideas and materials
- ✓ Discuss teacher and student needs

ihlondon.com/trends →

CONTENT AND LANGUAGE

INTEGRATED LEARNING (CLIL)

Learn to teach other subjects in English.

COURSE SUMMARY

English level:	B1 (intermediate) and above
Course length:	2 weeks
Maximum class size:	15
Lessons:	30 (55 minutes each)
Course days:	Monday to Friday
Winter 2020 dates and class times:	06 January – 17 January (13.15 – 16.15)
Summer 2020 dates and class times:	20 July – 31 July (13.15 – 16.15) 03 August – 14 August (13.15 – 16.15)

WHO IS THIS COURSE FOR?

This course is for teachers who are teaching another subject, such as geography, history or sciences, and using English to teach the subject.

COURSE OUTLINE

The course takes a practical approach with discussions and demonstrations of materials. You will work with your tutor to produce a wide range of materials and activities that can be used as part of a CLIL curriculum.

Some subjects that may be covered are:

- › Exploring ways to allow learners more contact with the target language
- › Using a task-based learning approach to develop students' speaking skills
- › Developing awareness of and responding to different learning styles
- › Exploring different approaches to testing and assessment
- › Developing students' speaking, listening, reading and writing skills

Participants are asked to bring some teaching materials for their subject to use on the course. As CLIL is implemented differently around the world, it is a great opportunity to compare and contrast different experiences.

WHAT WILL YOU ACHIEVE?

Take this course to:

- ✓ Develop an understanding of the key challenges and benefits of CLIL
- ✓ Consider methodology, teaching strategies and skills for use with CLIL
- ✓ Adapt materials for language learning in a CLIL subject
- ✓ Share ideas from the participants' classrooms and school context

ihlondon.com/clil →

PRACTICAL

TEACHER

Activities, resources and ideas to liven up your classroom.

Download a sample timetable for any of our short courses at ihlondon.com or contact sales@ihlondon.com

COURSE SUMMARY

English level:	B2 (upper intermediate) and above
Course length:	2 weeks
Maximum class size:	15
Lessons:	30 (55 minutes each)
Course days:	Monday to Friday
Winter 2020 dates and class times:	06 January – 17 January (09.00 – 12.00) 20 January – 31 January (13.15 – 16.15)
Summer 2020 dates and class times:	06 July – 17 July (13.15 – 16.15) 20 July – 31 July (13.15 – 16.15) 03 August – 14 August (13.15 – 16.15) 17 August – 28 August (13.15 – 16.15)

WHO IS THIS COURSE FOR?

One of our most popular courses, this course is for teachers who want a practical programme that covers developing resources, practical ideas and methods to liven up classrooms and motivate students.



The approach was really practical and as teachers we could understand how might be the best way to implement an activity.

Letícia Costa Feiteira,
Practical Teacher

COURSE OUTLINE

Our Practical Teacher course will introduce you to new techniques and approaches that you can use in the classroom. The course is an activity-based programme and examples include:

- › Activities to develop listening, speaking, reading and writing
- › Selecting and exploiting materials
- › Activities for teaching pronunciation
- › Teaching using a task-based learning approach
- › Using student mistakes to aid understanding
- › Dealing with emerging language and reformulation

The course content will be chosen between your course group and tutor.

WHAT WILL YOU ACHIEVE?

Take this course to:

- ✓ Select, adapt and design materials for different contexts
- ✓ Build your confidence in using a variety of teaching techniques
- ✓ Understand ways to motivate and engage learners
- ✓ Share teaching experiences with other professionals

ihlondon.com/practical →

LANGUAGE DEVELOPMENT

AND TEACHING SKILLS

Develop your own knowledge and use of English.

COURSE SUMMARY

English level:	B1 (intermediate) and B2 (upper intermediate)
Course length:	2 weeks
Maximum class size:	15
Lessons:	30 (55 minutes each)
Course days:	Monday to Friday
Summer 2020 dates and class times:	06 July – 17 July (13.15 – 16.15)

WHO IS THIS COURSE FOR?

For teachers who want to develop their own knowledge and use of English for classroom teaching and for life outside the classroom.

COURSE OUTLINE

Language skills you will learn:

- › Review and clarify grammatical areas
- › Extend lexical range, e.g. phrasal verbs and idiomatic language
- › Improve pronunciation at word and sentence level
- › Develop reading and listening skills through the use of contemporary materials selected from TV, films, magazines/newspapers, songs and the internet.

Teaching skills you will learn:

- › Classroom language for setting up and managing classroom activities
- › Approaches and techniques for introducing and practising new language
- › Techniques for correcting oral and written learner errors
- › Using different media
- › Adapting teaching approaches and techniques to learners with specific needs and to different ages, e.g. business, teenagers.

WHAT WILL YOU ACHIEVE?

Take this course to:

- ✓ Develop awareness of English language for teaching purposes
- ✓ Improve accuracy of classroom language
- ✓ Practise using classroom language and receive feedback
- ✓ Further develop an understanding of classroom principles and techniques
- ✓ Explore how you can take what you have learnt back to your teaching context

ihlondon.com/ldtskills →

LIFE IN BRITAIN

Bring British culture to the classroom.



COURSE SUMMARY

English level:	B2 (upper intermediate) and above
Course length:	2 weeks
Maximum class size:	15
Classroom lessons per week:	30 (55 minutes each)
Course days:	Monday to Friday
Winter 2020 dates and class times:	20 – 31 January (13.15 – 16.15)
Summer 2020 dates and class times:	20 – 31 July (13.15 – 16.15) 03 – 14 August (13.15 – 16.15)

WHO IS THIS COURSE FOR?

This course offers an insight into contemporary issues in British life and culture and increases confidence in sourcing and adapting authentic materials to use in class.

COURSE OUTLINE

The course includes guided visits and excursions in and around London. The teacher will demonstrate teaching techniques as they lead the classes. The course will improve your use of 'everyday' English in the classroom, and your understanding of contemporary British culture.

At the beginning of the course your tutor will ask for input on what topics are of particular interest to you and content will be negotiated by the class.

- Areas of study could include:
- › Press and media
 - › Multicultural Britain
 - › Employment
 - › Royal Family
 - › Sport
 - › Politics and the political system
 - › Arts

CULTURAL EXCURSIONS

A cultural programme is organised for this course with morning (or afternoon depending on your course date) and evening excursions to places of cultural interest around London. Activities can include:

- › Art exhibition
- › West End show
- › Alternative London guided tour
- › Leisure activity
- › Pub quiz

WHAT WILL YOU ACHIEVE?

Take this course to:

- ✓ Increase your confidence in sourcing and adapting up-to-date authentic materials for use in class
- ✓ Gain greater awareness of contemporary issues and culture in Britain
- ✓ Share teaching experiences with other professionals

ihlondon.com/life →

TEACHING FOR EXAM CLASSES

Prepare your students for their best results.

COURSE SUMMARY

English level:	B2 (upper intermediate) and above
Course length:	2 weeks
Maximum class size:	15
Lessons:	30 (55 minutes each)
Course days:	Monday to Friday
Summer 2020 dates and class times:	03 – 14 August (13.15 – 16.15)

WHO IS THIS COURSE FOR?

The course will give you practical advice to keep your students motivated and help them make the progress they need to pass exams.

COURSE OUTLINE

On this course, you will look at activities and materials for exam classes, and consider ways to adapt them for your learners.

You will review examples of task types from a range of formal exams including Cambridge First, Cambridge Advanced and IELTS. You will consider what students need to learn at different levels and ways to teach these areas.

You will look at a variety of ways to assess progress formally and informally and share ideas on how to evaluate and respond to students' spoken and written English.

WHAT WILL YOU ACHIEVE?

Take this course to:

- ✓ Review activities to use in exams classes to promote student engagement
- ✓ Look at samples of assessment criteria and ways to use them
- ✓ Refresh your knowledge of current teaching methods
- ✓ Consider different ideas in relation to your own teaching and your learners' needs.
- ✓ Discuss teaching issues with colleagues

ihlondon.com/tec →



TEACHING

YOUNG LEARNERS

Learn to teach students aged 6 to 11.



COURSE SUMMARY

English level:	B2 (upper intermediate) and above
Course length:	2 weeks
Maximum class size:	15
Lessons:	30 (55 minutes each)
Course days:	Monday to Friday
Winter 2020 dates and class times:	06 – 17 January (13.15 – 16.15)
Summer 2020 dates and class times:	06 – 17 July (13.15 – 16.15) 03 – 14 August (13.15 – 16.15)

WHO IS THIS COURSE FOR?

This course is suitable for teachers working with young learners from 6 to 11 years old. It is for teachers who may be teaching English as a separate subject (ELT) or combining English with other subjects, as in Content and Language Integrated Learning (CLIL) in a primary context.

COURSE OUTLINE

The course encourages participants to try out new classroom activities and discover the principles and methodologies used for teaching young learners.

Topics include:

- › Ways of introducing and practising a new language
- › Developing skills
- › Phonics
- › Using storybooks
- › Different types of materials to use and adapt.

WHAT WILL YOU ACHIEVE?

Take this course to:

- ✓ Evaluate teaching activities, materials and media
- ✓ Understand how content and language are integrated in primary ELT and CLIL
- ✓ Consider classroom management, behaviour and motivation
- ✓ Share experiences with peers

ihlondon.com/ttyoung →

TEACHING VERY

YOUNG LEARNERS

Gain confidence teaching English to ages 3 to 6.

COURSE SUMMARY

English level:	B2 (upper intermediate) and above
Course length:	2 weeks
Maximum class size:	15
Lessons:	30 (55 minutes each)
Course days:	Monday to Friday
Summer 2020 dates and class times:	06 – 17 July (09.00 – 12.00)

WHO IS THIS COURSE FOR?

The course is for English teachers who want to gain confidence working with very young learners. You may already have some experience or be just about to start teaching this age range.

COURSE OUTLINE

On this course you will look at the different stages in learning and development of young children. You will learn about activities to use to stimulate and support language development, for example craft, games, stories and songs and ways to make learning opportunities from play. You will also analyse what is suitable for the different ages.

The course will include techniques for developing literacy at different ages from individual sounds and letters to blending sounds and spelling words.

WHAT WILL YOU ACHIEVE?

Take this course to:

- ✓ Consider the different needs, realities and challenges of teaching very young learners
- ✓ Practise planning to meet aims
- ✓ Look at games and activities aimed at recognition, production and early years literacy through phonics
- ✓ Design and adapt practical teaching activities and materials to meet the needs of the learners and the curriculum



The course was exactly what I was looking for and has definitely changed the way I see teaching English as a foreign language.

Camila, Teaching Very Young Learners

ihlondon.com/tvyoung →



TECHNOLOGY FOR LANGUAGE TEACHERS

Make the most of digital resources in your teaching.

Download a sample timetable for any of our short courses at ihlondon.com or contact sales@ihlondon.com

COURSE SUMMARY

English level:	B2 (upper intermediate) and above
Course length:	2 weeks
Maximum class size:	15
Lessons:	10 or 30 (55 minutes each)
Course days:	Monday to Friday
Winter 2020 dates and class times:	06 – 17 January (12.15–13.15) 10 lesson course
Summer 2020 dates and class times:	06 July – 17 July (09.00–12.00) 30 lesson course

WHO IS THIS COURSE FOR?

This course is suitable for language teachers who want to use technology to enhance the learning experience of their students.

COURSE OUTLINE

The tutor will lead practical workshops and discussions based on the many aspects of language teaching and learning with technology.

Examples of syllabus content are:

- › Exploiting text, image, audio and video
- › Websites, apps and tools
- › Specific learning goals related to skills and systems
- › Projects that could be implemented in your teaching context

WHAT WILL YOU ACHIEVE?

Take this course to:

- ✓ Try technologically-enhanced classroom activities
- ✓ Consider the learning theories that underpin them
- ✓ Have a bank of resources to use in teaching



ihlondon.com/tgs →

LEARN WITH

ADRIAN UNDERHILL



Pronunciation and Performance from the author of *Sound Foundations*.

COURSE SUMMARY

English level:	B2+ (pre-advanced) recommended
Course length:	1 week
Maximum class size:	15
Lessons:	20 (55 minutes each)
Course days:	Monday to Friday
2020 dates and class times:	13 – 17 July (09.00 – 13.00)

“

He was inspiring and clearly amazingly knowledgeable. It gave me an amazing insight both in the subject but also in how to teach and how to coach.

Sonia, participant on Learn with Adrian Underhill

COURSE OUTLINE

There are two strands to this practical programme:

1. Develop your own pronunciation at the level of sounds, words and connected speech. Learn to feel and sense what you are doing in your mouth so that you can critique and change your pronunciation as much as you wish, and help your learners to do the same.
2. Develop your performance skills through presentation and storytelling, to bring about listener engagement and enjoyment through your use of stress, intonation, voice tone, pause and fluency and body language.

At the same time, you will enjoy a complete workout with the *Sound Foundations* chart, as well as constant feedback to gain confidence and personalise a range of teaching techniques.

ABOUT ADRIAN UNDERHILL

Adrian is a world-renowned ELT Consultant and Trainer. Adrian is an author and the series editor of the *MacMillan Books for Teachers*. He is well known for his book *Sound Foundations* and his inspiring talks on how to understand the phonemic chart. His pronunciation chart was developed into an app for students and teachers and won an industry award. Adrian takes a holistic approach to teaching and teacher training and is a frequent conference speaker.

BIBLIOGRAPHY

- › Underhill, A. (1980). *Use your dictionary*. Oxford: Oxford University Press.
- › Underhill, A. (2002). *Macmillan English Dictionary Workbook*. Oxford: Macmillan Education.
- › Underhill, A. (2002). *Macmillan English dictionary for advanced learners*. London: Macmillan.
- › Underhill, A. (2005). *Sound Foundations: English Pronunciation*. MacMillan Books for Teachers.

ihlondon.com/expert →

SATURDAY

SERIES

These practical short courses run on Saturdays, so you can easily fit them in around your teaching schedule.

They are perfect bite-size courses to boost your skills and meet other teachers in London.

Visit ihlondon.com or contact sales@ihlondon.com for more details and dates.

The Saturday Series is for qualified English language teachers who are looking for short courses on specialist teaching areas:

- › Language Teaching Refresher
- › Focus on Young Learners

Coming soon:

- › Focus on Teaching Exam Classes
- › Focus on Teaching Business English
- › Focus on Materials Design
- › Focus on Needs Based Teaching / One-to-One

ihlondon.com/saturday-series →

CERTIFICATE FOR

PRACTISING TEACHERS

Launching soon!

Trinity's new in-service teacher education qualification is launching soon. Check our website for updates or email sales@ihlondon.com.



ihlondon.com/delta →

THE

DELTA

A Delta sets you apart as a teacher. It shows you are dedicated to both your students' learning and your own. It gives you skills that will help you throughout your career.

The Delta (Diploma in Teaching English to Speakers of Other Languages) is the highest level practical teaching qualification for English language teachers.

Delta (or equivalent) is a required qualification to obtain a senior academic management role at a British Council accredited centre in the UK.

With a Delta you can step up to more challenging roles with confidence and it is a foundation for senior teachers, teacher trainers and managers.



3 STEPS

TO YOUR DELTA

The Delta is an advanced blend of theory and practice that will deepen your knowledge and understanding of English language teaching. You will demonstrate your ability to plan, teach and evaluate learning.

It is a level 7 qualification, the same level as a Master's Degree. The Delta requires you to have an advanced level of English: C1+ on the CEFR and have a minimum of 2 years' teaching experience.

You will receive a Cambridge Delta Certificate after successful completion of each module. You need to complete all three modules to receive your full Cambridge Delta Diploma. There is no time limit in which to take the modules and they can be studied in any order.

MODULE 1: UNDERSTANDING LANGUAGE, METHODOLOGY AND RESOURCES FOR TEACHING

This module focuses on extending and developing candidates' knowledge and understanding of teaching and learning English in a range of contexts.

Topics include:

- › Different teaching approaches and methodologies
- › Language systems and learners' linguistic problems
- › Knowledge of resources, materials and reference sources for language learning

Assessment: Written exam

MODULE 2: DEVELOPING PROFESSIONAL PRACTICE

This module focuses on developing awareness and expertise in the principles and professional practice of teaching English.

You will research and write essays on English language systems and skills development, and plan and teach lessons based on your research. During the course you are observed and will receive developmental feedback on your teaching and will also observe other teachers.

Topics include:

- › Preparation for teaching
- › Managing and supporting learning
- › Lesson preparation and teaching
- › The language learner and the language learning context
- › Evaluating, selecting and using resources and materials for teaching purposes
- › Observing and evaluating other teachers' lessons

Assessment: Portfolio of coursework (including background essays, observed lessons and a professional development assignment)

MODULE 3: EXTENDING PRACTICE AND ELT SPECIALISM

This module focuses on needs analysis, syllabus design, course planning and assessment. You will carry out an independent investigation, leading to the design of a course programme related to a specialism.

Some of the specialisms include:

- › Teaching exam classes
- › Business English
- › Teaching young learners
- › English for Specific Purposes
- › Teaching one-to-one

Assessment: Written assignment

ALTERNATIVE OR ADDITIONAL MODULE 3: ELT MANAGEMENT

Module 3 ELT Management can only be booked as part of the Blended 123 package or taken as a single Delta module. You can choose to take this as an additional module even if you have completed your Delta.

This module focuses on situation analysis, planning and implementing change. You will carry out an independent situation analysis, leading to the design of a change proposal in one of the following specialisms:

- › Academic management
- › Human resource management
- › Customer service
- › Marketing

To successfully complete this module, you will need to have access to management data from a relevant language teaching organisation.

Assessment: Written assignment



ihlondon.com/delta →

CHOOSE

YOUR DELTA

We offer a variety of different ways for you to study for the Delta, including Distance Delta and face-to-face options, so you can study to suit your schedule.

Delta modules can be booked together or individually. Booking together in a package offers the best value for you. With any of our Delta packages, we help you prepare for your course with a pre-course task and targeted reading so that you make the most of your study time.

“This was an absolutely fascinating course. I learnt so much and felt privileged to be trained by such knowledgeable and experienced teachers. Their sessions were brilliant as was their feedback and guidance. Apart from all this, the course reminded me and reaffirmed my love of teaching.

Gabriela, Delta

FACE-TO-FACE DELTA 123

The face-to-face Delta 123 is a full-time course for teachers who want to immerse themselves in their course and their studies. It covers materials for all three modules.

During your face-to-face course you will attend daily sessions on teaching methodology and techniques, illustrated with demonstrations and materials. You will be trained by expert IH London Delta trainers who will inspire and support you to develop your teaching. You can also watch our experienced teachers in their classrooms. In the afternoons there are teaching, reflection and feedback sessions.

Face-to-face Delta 123 is designed as an intensive course with assignment writing and lesson planning in the evenings and at weekends.

By the end of the course you will have completed Module 2, the largest Delta module. You will have studied for the Module 1 exam, which you can take in the following June or December. You will have all the information you need for the Module 3 assignment and you can submit a draft for feedback after the course. You can submit your module 3 assignment to Cambridge Assessment in June or December. This gives you flexibility to adjust the intensity of the course to match your needs.

Course length: 8 weeks
Course dates: 16 March – 08 May 2020
 14 September – 06 November 2020

BLENDED DELTA 123

The Blended Delta offers the best of both, combining online modules with a face-to-face Module 2.

You have the flexibility to study for Modules 1 and 3 online with The Distance Delta, and you get the benefit of being part of our school in Covent Garden in London for the practical Module 2.

Taking Module 1 on our fully tutored online Delta course, in partnership with the British Council, means you can read and study in your own time and around your work and life commitments.

The studying you do for Module 1 will prepare you for a face-to-face Module 2 at IH London where you will get the opportunity to experience a focussed intensive course away from other distractions. We provide the students for you to teach in our multilingual classes and you will be tutored by excellent and inspiring trainers.

For Module 3 you return to an online course, which is a good way to have support through the stages of this extended assignment module. You can work closely with your tutor and study group.

Course length: 9 – 12 months
Start dates: March and September

“I really enjoyed it and found it very useful to look at teaching practice in a focused and practical way.

Victoria, Delta

DISTANCE DELTA 123

The most flexible way to study for your Delta. Distance Delta allows you to become an advanced teacher around your busy schedule.

IH London is the only school to offer The Distance Delta in partnership with the British Council.

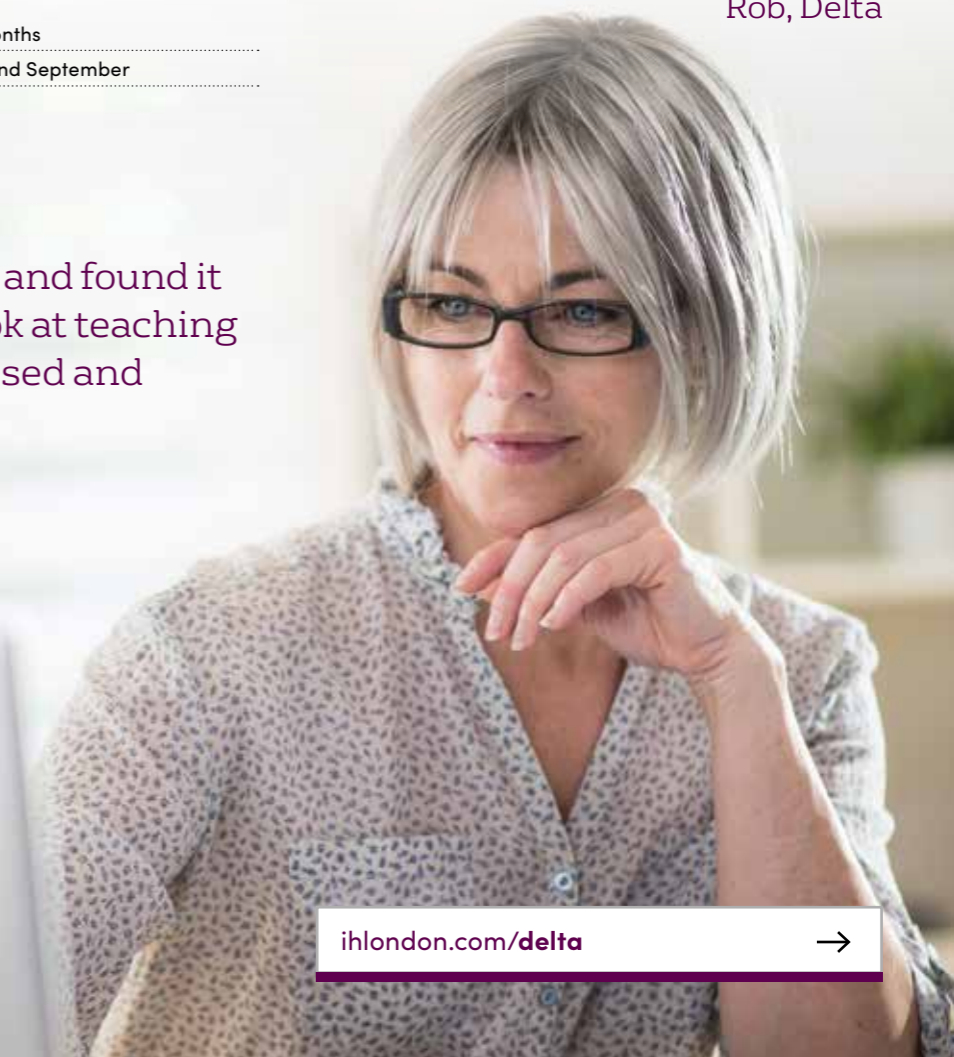
Distance Delta allows you to stay in your current teaching role, in your school and study alongside work, for all three modules of the Delta. All three modules are studied concurrently and you are supported throughout by your tutor and study group.

The course is carefully programmed with specific tasks and schedules, deadlines and achievable goals to help you manage your time and learning.

Start dates: March and September

”
 First class and very professional.

Rob, Delta



ihlondon.com/delta →

SINGLE

DELTA MODULES

Any of the Delta modules can be taken separately. Even if you have already completed a module with another school, you can study your remaining modules with IH London.

DELTA MODULE	METHOD	DATES
Module 1	Online (14 weeks)	March and August
Module 2	Face-to-face full time (6 weeks)	20 January – 28 February 2020 20 July – 28 August 2020
	Online (14 weeks)	March and August
Module 3	Online (14 weeks)	March and August
Alternative or additional Module 3: ELT Management	Online (14 weeks)	March and August

MODULE 2

This is the largest part of your Delta and it has the greatest impact on your professional career. It is where you create a portfolio of your best teaching and essays to demonstrate your knowledge and understanding of English, of the learners, the materials and methodology.

Choose a face-to-face course if you want a focussed experience of daily interaction with expert tutors who can bring concepts to life, show you new ideas and share their experience with you. You can take Module 2 face-to-face on an intensive 6-week course at IH London.

Or choose Distance Delta Module 2 to study more extensively alongside work and be assessed teaching your own students.

It is best to take your Module 1 first to get the most from your course and help you prepare for the practical Module 2.

HOW TO APPLY

FOR YOUR DELTA

When you apply, if the application is successful we offer you a place. We don't take payment until you book your place on a course. Your offer is valid for 1 year.

There is a written assignment as part of the application task.

Visit ihlondon.com or contact sales@ihlondon.com for an application pack.

Visit www.thedistancedelta.com to apply online for the Distance Delta.



ihlondon.com/delta



TRAINERS

AND MANAGERS

Courses for trainers and academic managers, and for teachers who have their sights set on becoming an academic manager or a trainer.

Advance your career, your school and your students.

ACADEMIC MANAGER

DEVELOPMENT

Develop your skills as an academic manager in one week with the expert trainers at IH London.

COURSE SUMMARY

English level:	C1 (advanced) and above
Course length:	1 week
Max class size:	8
Lessons per week:	25 (55 mins each)
Lesson times:	09.00-12.00 and 13.15-15.15 (Monday - Friday)
Course dates:	03 August - 07 August 2020

WHO IS THIS COURSE FOR?

Academic managers, directors of studies, or teachers who are planning to become involved in an academic management role in the future.

COURSE OUTLINE

This course examines the skills and qualities needed to be an effective academic manager, and how to develop teams working both face-to-face and remotely.

Topics include theories of staff motivation and their application, managing performance and managing educational change.

The course will be tailored to specific needs of the course participants as identified in needs analysis sent prior to the course.

WHAT WILL YOU ACHIEVE?

Take this course to:

- ✓ Develop your understanding and awareness of the relationship between management theory and its application
- ✓ Learn a range of practical strategies to help manage individuals, teams and processes more effectively
- ✓ Explore issues related to managing change in education and how to evaluate the impact of change initiatives
- ✓ Work with academic managers from a range of contexts, identify key issues and good practice in addressing these

ihlondon.com/amd



TEACHER TRAINER

DEVELOPMENT

Develop your skills as a teacher trainer in two weeks with the experts at IH London.

COURSE SUMMARY

English level:	C1 (advanced) and above
Course length:	2 weeks
Maximum class size:	15
Lessons:	30 (55 mins each)
Lesson times:	13.15-16.15 (Monday – Friday)
Course dates:	03 August – 14 August 2020

WHO IS THIS COURSE FOR?

This course is suitable for experienced teachers who are now involved in teacher training courses or teacher support, or who want to move into this area.

COURSE OUTLINE

This course looks at approaches to teacher training, running seminars and workshops, the role of observation in a particular context and ways to support teachers' continuing professional development.

Course participants will be able to evaluate and develop training approaches and materials relevant to the participants' own needs.

WHAT WILL YOU ACHIEVE?

Take this course to:

- ✓ Develop an awareness of a range of approaches to training
- ✓ Create sample training materials relevant to the participants' own context
- ✓ Consider issues in evaluating teaching and the effectiveness of training
- ✓ Observe experienced trainers delivering practical, theoretical and formally assessed training courses
- ✓ Share professional practice with other educators

ihlondon.com/ttd



BUSINESS CULTURAL

TRAINERS CERTIFICATE (BCTC)

Improve your knowledge and skills in intercultural training in business.

COURSE SUMMARY

English level:	B2+ (pre-advanced) and above
Course length:	3 days
Maximum class size:	15
Course hours:	18
Lesson times:	09.30-12.30 and 13.30-16.30
Course days:	Thursday, Friday and Saturday
2020 start dates:	23 April 02 July 03 September 05 November

WHO IS THIS COURSE FOR?

Teachers, management trainers, HR Managers, and Learning and Development Managers who want to improve their knowledge and skills in intercultural training in business.

Especially suitable for CELTA and Delta alumni wishing to go into intercultural training for management.

COURSE OUTLINE

This course focuses on 3 main areas:

- › **Research:** intercultural training models and research resources
- › **Design and Marketing:** how to design and market an intercultural training course in business
- › **Delivery:** training room activities for intercultural courses

WHAT WILL YOU ACHIEVE?

Take this course to:

- ✓ Gain an IH BCTC Certificate upon course completion
- ✓ Apply basic intercultural theory in a business context
- ✓ Be able to design a course to meet client objectives
- ✓ To optimise your own skills and experience
- ✓ To market and price your training
- ✓ To use a range of delivery activities to meet specific business intercultural needs

ihlondon.com/bctc



SCHOOLS AND ORGANISATIONS

IH London experts create bespoke training programmes for schools and organisations all over the world.

Our bespoke courses start with a conversation to find out what you need. We shape the content and delivery of each course to your teaching context and goals. Your teachers can come to our school in London to study or our trainers will come to you.

LANGUAGE TEACHER TRAINING CONSULTANCY

At IH London we believe in:

- › communication without borders
- › connecting the world
- › educating beyond language
- › building communities across cultures
- › bringing people together
- › broadening horizons
- › helping people feel part of something bigger
- › promoting international communication
- › inspiring people to be the best they can be

Our consultancy services include:

- › Teacher training courses
- › Trainer training courses
- › Tailor-made programmes
- › Syllabus design and development
- › Testing and needs analysis
- › Resource management and development
- › Evaluation and follow-up consultation
- › Education management

OUR TRAINING

EXPERIENCE

These are some of the teacher training projects, partners and countries we have been working with recently.

BRITISH COUNCIL ENGLISH CONNECTS

PROJECT IN COTE D'IVOIRE AND SENEGAL

The teachers from Côte d'Ivoire spent two weeks at IH London updating their methodology and skills. The teachers from Senegal had their training in Ghana. The teaching context of teachers from these two different countries are quite different from the UK, so their courses were specifically designed to be relevant to their students' needs.

After the training, the IH trainers went to visit the teachers in their classroom and observed them using some new activities and ideas with their own students. We kept in touch after the training through WhatsApp groups and the teachers formed a very active community of practice where they share ideas and solve teaching problems together.

The training has had a significant impact on the individuals, many of whom have gone on to become trainers themselves as a result of the course. The WhatsApp group is still being used by the teachers.

Not only did the tutors provide the necessary and foundational theories for language teaching, but also they did the demonstrations for us to see and know how to teach so that our students can, in different contexts, use and practice English language in the best way possible. Their teaching, their demonstrations and materials really show and prove that serious preparations and planning was done before the classes.

The input sessions and the materials were useful to our context. We are sure it will work if we try to do it the way we are taught. I have acquired a lot more strategies and techniques to teach the language. I have refreshed my teaching methods thanks to the theories and the demonstrations.

I just would like to tell my trainers that frankly speaking it has been a huge delight to have worked with them. I have enjoyed and appreciated the classes. I hope they will continue to train a lot more colleagues from Senegal because I firmly believe that we all need to upgrade our teaching skills.

Babacar, Teacher from Senegal

TRAINING PROGRAMME FOR YOUNG LEARNER

TEACHER EDUCATORS FOR THE BRITISH COUNCIL

This was a training and mentoring programme for experienced teachers who were moving into the role of trainer. The course provided an update of methods and then the trainers collaboratively designed their own training sessions for teachers in their region. They prepared to mentor teachers in Tunisia and to help them start to teach English to younger aged primary students. When they returned to Tunisia, we kept in touch and mentored the new trainers as they started their new roles. This provided the encouragement and support which new trainers often need.

“The materials and input sessions were useful for my context and we can share what we have seen in IHL in Tunisia. I have refreshed my knowledge of teaching and learned new ideas, more efficient and practical teaching. We have learned about the new teaching methods and how to make them practical and to adopt them with our teachers.

Ben lagha Hajer, Teacher from Tunisia

“Actually, everything we learnt is important and useful in any context. The course was important and we learnt a lot which is beneficial for us to help us do our tasks and achieve our objectives. I am going to let my teachers benefit as well from this important experience during our meetings and my visits.

Raja, Teacher from Tunisia

WORKING WITH THE PERUVIAN

MINISTRY OF EDUCATION

We welcomed a cohort of 87 Peruvian teachers to the UK for a 7 week training course. The teachers came from urban and remote areas and many had not travelled outside their region. Their teaching context included mixed levels in classes of over 60, few resources, mixed levels of training and of teachers' English.

We managed the academic needs and welfare of this group in the school with all teachers here at the same time. The teachers stayed in homestays and had a full social programme.

The project involved considerable monitoring of progress and reporting on teachers' outcomes during and at the end of the course.

Teachers reported a boost to their confidence and motivation, their own level of English, their understanding of best-practice approaches to teaching, their practical experience of delivering this methodology and their cultural awareness.

The programme formed a part of the Peruvian Government's plan to make Peru a bilingual nation by 2025, with English as its second language.

WORKING WITH THE KOREAN

MINISTRY OF EDUCATION

We provided teacher training for over 75 Korean primary and secondary school teachers as part of a wider government programme to enhance English language teacher education.

These courses involved a mix of language development, enhanced methodology and teaching skills and practical development in implementing these skills and knowledge through guided teaching practice with real students over an intensive period of training of 6 to 12 weeks.

OUR WORK

IN CHINA

IH London has been designing and running teacher training programmes in China for over a decade. With a Chinese partner, we delivered training to state school teachers in TKT (Teaching Knowledge Test) and communicative method teaching.

Working with the largest private English language school chain, we provided consultancy for setting up a schoolwide CPD programme for English Language Teaching to introduce an updated teaching methodology. IH London supported the client to become established as a CELTA centre in Shanghai from 2017.

We are in the third successful year of delivering Trainer Training for state school teachers in partnership with a prestigious university in Beijing, China.

LONG-TERM

PARTNERSHIPS IN BRAZIL

IH London delivered 4-week long teacher training programmes for groups of 20-30 English language teachers from Paula Souza in Brazil consecutively for four years. The results achieved throughout the programme included:

- › Teachers gained clearer understanding of the methodology and principles behind current ELT practices through loop input. They experienced model lessons as students and looked in detail at the steps, material and content from a pedagogical viewpoint.
- › Teachers improved language awareness (grammar, lexis, pronunciation and functional language) and developed their English skills, specifically listening, speaking and reading to improve the quality of their own classes.
- › The course raised awareness of contemporary British culture and history and enhanced teachers' understanding of British behaviour, customs, infrastructure and language to further enrich their experiences living and learning in the UK.
- › Teachers learnt how to use technology both inside and outside the classroom to enrich class content and promote learner autonomy.

CLIL TRAINING

IN BRAZIL

IH London designed a programme for five schools in the Parana State of Brazil. The schools teach subjects in both Portuguese and English. The subjects taught in English are Geography, History, Art, Applied Science and Robotics.

We provided support for subject teachers with initial training in CLIL focusing on how to enhance the students' knowledge of English and improve their understanding of the concepts, ideas and knowledge in the subject areas.

The programme ran in two parts:

1. Face-to-face course in Curitiba, Brazil
2. Online forum and biweekly Skype meetings to implement the ideas in the classroom

SPEAK TO

OUR EXPERTS

Contact us to discuss your training requirements and we'll create a bespoke course for your school or organisation.

Contact sales@ihlondon.com

EXAMPLE COURSES

FOR YOUR SCHOOL

We can create a completely bespoke course for your school or organisation, or you can choose one of our standard courses and we will adapt it for your setting and your teachers. We can arrange the delivery at a time and place that suit you.

ENGLISH AS A MEDIUM OF INSTRUCTION

Training for teachers who teach other curriculum subjects in English, either at secondary or university level.

COURSE SUMMARY

English level:	Minimum B1 (lower intermediate)
Course length:	To suit you
Start dates:	To suit you
Lesson times:	To suit you

This course is for teachers of a curriculum subject, such as geography, history or sciences, with English as the Medium of Instruction (EMI). This could be at secondary or at university level.

EMI focuses on teaching subject knowledge through English and is growing in popularity around the world. It raises English-language levels of students to prepare them for a global workplace.

IH CERTIFICATE IN PRACTICAL TEACHING SKILLS

Your teachers gain training, feedback and a qualification all within your school. Choose face-to-face, online, or both.

COURSE SUMMARY

English level:	Minimum B1 (lower intermediate)
Course length:	16 weeks
Start dates:	To suit you
Lesson times:	Face-to-face lessons to suit you 60 hours online study anytime

This course is for institutions that want to provide professional development for their English language teachers. Teachers study alongside their usual teaching schedules. All training is directly applied to your setting.

There are two components to the course: The Training Course (online) and The Teaching Practice Course (face-to-face). The organisation can choose to run one of the course parts or both.

CELT-P

Teacher training and a Cambridge qualification for primary teachers, at your location.

COURSE SUMMARY

English level:	Minimum B1 (lower intermediate)
Course length:	6-9 months
Age:	21 and above
Start dates:	To suit you
Lesson times:	Online learning to suit you

This course is for schools or institutions that have a group of primary teachers (teaching 6-12 year olds) who would like to gain the CELT-P qualification.

The course leads to a recognised qualification from Cambridge English, part of the University of Cambridge.

CELT-S

Teacher training and a Cambridge qualification for secondary teachers, at your location.

COURSE SUMMARY

English level:	Minimum B1 (lower intermediate)
Course length:	6-9 months
Age:	21 and above
Start dates:	To suit you
Lesson times:	Online learning to suit you

This course is for schools or institutions that have a group of secondary teachers (teaching 11-18 year olds) who would like to gain the CELT-S qualification.

The course leads to a recognised qualification from Cambridge English, part of the University of Cambridge.



DISCOVER

LONDON

We specialise in face-to-face teacher training courses. Whether you already live in London or will be visiting for your course, you'll enjoy exploring London with us. There is always something remarkable to see or do in London. Let us be your guide.



We have a dedicated social programmes team who put together a monthly timetable of activities and day trips that you can sign up to, with many free of charge. This is available with any course in London, and for everyone to enjoy.

Thousands of unique restaurants, trendy rooftop bars, concerts across the city, West End theatre shows, independent shops and markets, make you feel part of big city life.

Did you know most national museums and art galleries in the UK are free, and only ask for an optional supportive donation?

You can also enjoy the eight royal parks in the city, and many more green spaces, all free.

SOCIAL PROGRAMME

MONDAY	TUESDAY	WEDNESDAY	THURSDAY	FRIDAY	SATURDAY
WEEK 1					
SIGHTSEEING RIVER CRUISE 3:30-5:30PM £10	WINE/ JUICE & CHEESE 4:15-6PM £5 / 10	TOWER OF LONDON 2:30-5:30PM £17.50	HAMPTON COURT PALACE 2-8PM £35	BOWLING 3:30-5PM £5	PRIDE LONDON 12-6PM FREE
WEEK 2					
SKY GARDEN VIEWING PLATFORM 3:30-5:30PM FREE	KARAOKE 4:30-7PM £5	WIMBLEDON 3:30-8:30PM £20	HARRY POTTER STUDIO TOUR 3:30-8:30PM £59	SOCIAL DARTS 3:30-5:30PM £5	MUSIC CONCERT 5-10:30PM £25

The timetable is a sample only, subject to availability. Excursion dates and details may change.

LONDON'S MOST

FAMOUS ATTRACTIONS

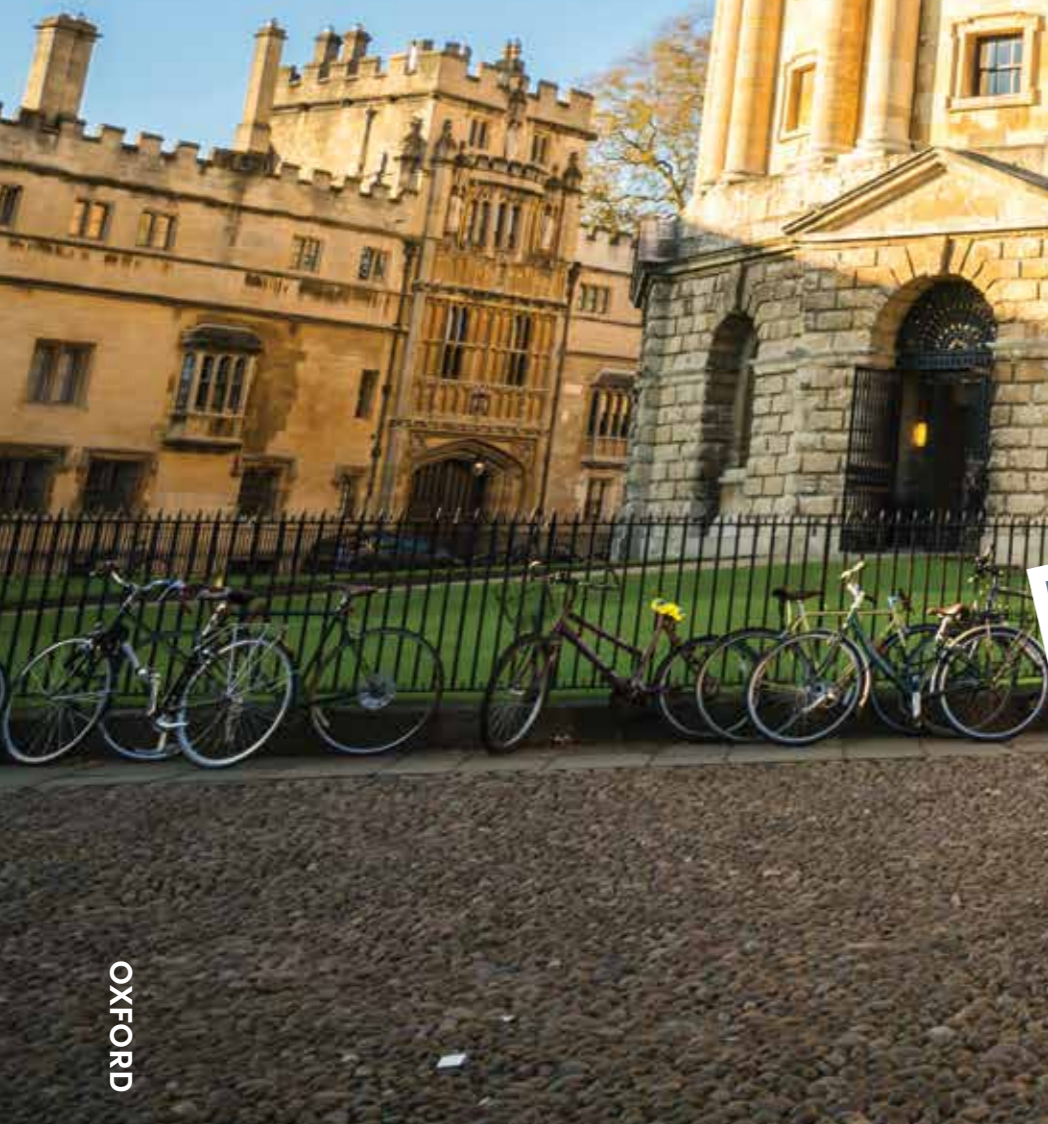
- › The London Eye
- › The Tower of London
- › The View from The Shard
- › London Dungeon
- › Tate Modern (free)
- › British Museum (free)
- › National Gallery (free)
- › Natural History Museum (free)
- › Victoria and Albert Museum (free)
- › Science Museum (free)
- › Somerset House (free)
- › Royal Museums Greenwich (free)
- › Royal Academy of Arts (free)

EXPLORE

THE UK

London also has fast connections to everywhere else in the UK. The seaside town of Brighton, and historic Cambridge and Oxford are all only an hour away from London by train.

London's location and excellent travel links (not to mention the relatively small size of the UK) mean you can visit many famous destinations during your stay. A day trip organised by IH London is perfect way to make new friends too.



OXFORD



CAMBRIDGE



BRIGHTON

OUR SOCIAL TEAM CAN BE YOUR GUIDE

James, our Social Programme Coordinator, has 13 years' experience organising social programmes and is passionate about making sure everyone has a great time.

”

London is a very special city and a great place to learn English and also make new friends because it has something to offer everyone.

It is a mix of the old and the new: with history, many interesting attractions such as the London Eye, a vibrant nightlife, a lot of free museums and galleries, and a growing café culture (which suits coffee enthusiasts like me!). My favourite thing is that London has many beautiful parks where you can pause in the city and just relax.

I love taking people around London because I am always discovering something new for myself and I have the chance to introduce them to things which they would not find by themselves.

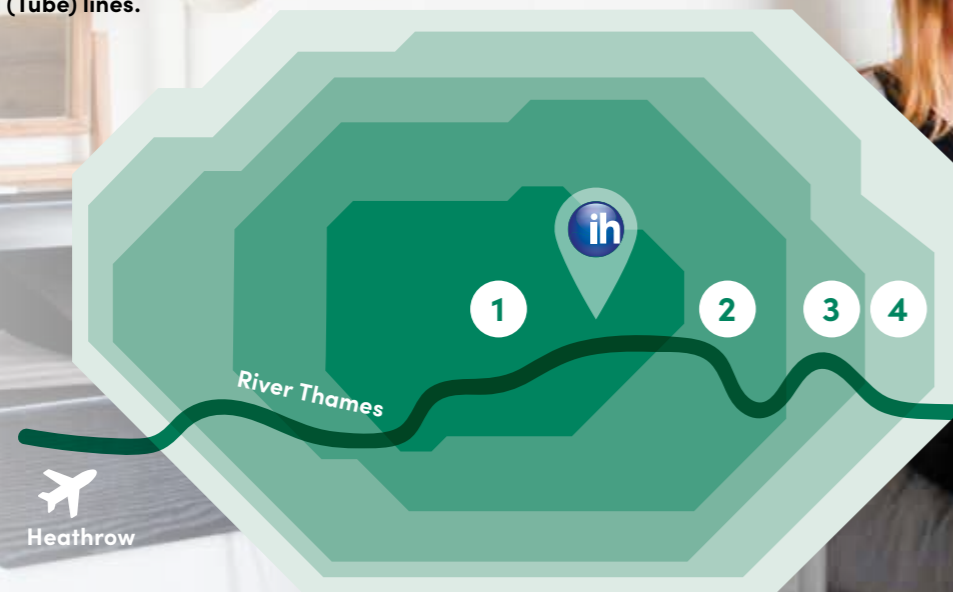
James,
Social Programme Coordinator

ACCOMMODATION

Your home while you train with us is important.

We have a range of accommodation options to suit you, including homestay with a host, one of our modern student residences or even a hotel if you prefer.

IH London is in Zone One, in central London, close to Covent Garden, Holborn and Tottenham Court Road underground (Tube) lines.



Zones One & Two

In Zones One and Two, we have a selection of student residences and hotel options. It means you can walk to the school, or take a short bus or underground ride. The cost of accommodation in the central area is higher than other parts of London.

Zone Three

Zone Three offers a quieter area to live in, but it is still easy to get to and from the city centre. We offer homestay with a host in this area.

Zone Four

This is the farthest Zone in which we have accommodation. We have homestay options in this area. It takes about 40–50 minutes to commute from this Zone. Did you know that the average London commute takes 74 minutes? This zone still compares favourably! In this area, people often live in houses and not apartments, have gardens and live near parks. The Tube and buses operate in this area throughout the day and night.

”

My host was outstanding. All the conversations we had were just great and his cooking... excellent. It was such a pleasure, I'm sure I'll be back again.

Felix, Switzerland

HOMESTAY

Live with an English-speaking host in their home and be welcomed as part of the family. Speak English over meal times and immerse yourself in British culture.

Homestays offer the most cost-effective way to stay in London. Families are selected and regularly visited by our staff and are fully compliant with all legal requirements.

Homestays provide a wonderful cultural experience: a home from home.

You can choose from standard, superior or executive homestay:

STANDARD

- › Good homes
- › Shared bathroom
- › Home cooking
- › Zones 2-4

SUPERIOR

- › Very good homes
- › Larger rooms
- › Extra comfort
- › High standard of cooking
- › Zones 2-4

EXECUTIVE

- › Excellent homes
- › Private bathrooms
- › High standard of comfort
- › Excellent home cooked meals
- › Zones 2-3



ALL HOMESTAYS

16+ AGE: over 16



DISTANCE FROM SCHOOL: Varies. 20-50 minutes by public transport



INTERNET: free wifi



MEAL OPTIONS: Breakfast only | Breakfast and 4 evening meals | Breakfast and evening meals 7 days a week



BILLS: inclusive of all utility bills



LAUNDRY: free facilities, once a week



LINEN: all linen provided

HALLS OF RESIDENCE

This is a popular option as it is within walking distance or a quick journey by bus or Tube to the school. We can offer rooms or studio apartments, both with private bathrooms. The halls also have access to a gym, as well as communal areas. We have a number of options to suit different budgets.



CHAPTER Highbury

A modern student residence located in vibrant north London. It is moments from Holloway Road and is just two tube stops away from King's Cross, making it the ideal location for easy connections across the city.

ROOM TYPE: Single room with private bathroom

FACILITIES: Cinema, on-site gym, great study space, games and karaoke room, social space, study booths and TV area.

ZONE: 2

DISTANCE FROM SCHOOL:
20mins 40mins 60mins

- 18+ AGE:** over 18
- INTERNET:** free wifi throughout
- MEAL OPTIONS:** self-catering (shared kitchen with 3 or 4 IH students)
- BILLS:** inclusive of all utility bills
- SECURITY:** 24/7 on-site team
- LAUNDRY:** washing machine and dryers available (small charge)
- LINEN:** bed linen provided (bring own towels)



CHAPTER Kings Cross

Close to the central King's Cross St Pancras train station, Chapter was completely refurbished in 2017 and has great modern facilities.

ROOM TYPE: Studio with private bathroom and kitchenette

FACILITIES: On-site gym, cinema room, games area with table tennis, pool table and table football, study areas, social spaces and courtyard.

ZONE: 1

DISTANCE FROM SCHOOL:
15mins 20mins 30mins

- 18+ AGE:** over 18
- INTERNET:** free wifi throughout
- MEAL OPTIONS:** self-catering (own kitchenette)
- BILLS:** inclusive of all utility bills
- SECURITY:** 24/7 on-site team, CCTV outside and inside, electronic photo swipe-card entry
- LAUNDRY:** washing machine and dryers are available (small charge)
- LINEN:** bed linen provided (bring own towels)



CHAPTER Islington

A modern student residence in vibrant north London, moments from Caledonian Park and one tube stop away from King's Cross St Pancras station.

ROOM TYPE: Single room with private bathroom

FACILITIES: On-site gym, cinema room, art studio, games area with karaoke, study areas, social spaces and TV lounge.

ZONE: 2

DISTANCE FROM SCHOOL:
20mins 40mins 55mins

- 18+ AGE:** over 18
- INTERNET:** free wifi throughout
- MEAL OPTIONS:** self-catering (shared kitchen)
- BILLS:** inclusive of all utility bills
- SECURITY:** 24/7 on-site team
- LAUNDRY:** washing machine and dryers are available (small charge)
- LINEN:** bed linen provided (bring own towels)

ONLINE TRAINING

We know sometimes you can't join us in London, or you want to learn online before or after your face-to-face course, so we have a number of teacher training online courses.

- › Study online from anywhere in the world
- › Slot in your study hours whenever it suits you
- › Affordable addition to your face-to-face training

Visit our website for more details on all online courses
ihlondon.com

Grammar for Teachers An online introduction to English grammar.	Young Learner Centre Management An online course to teach you the principles of managing a young learner centre.
Pronunciation and Teaching An online course to focus on teaching and pronunciation.	Teams and Organisational Communication Focus on working with teams (face-to-face and remotely) and communication.
Teaching IELTS (Speaking, Listening, Reading and Writing) Develop your knowledge of IELTS and how to teach the skills your students need.	Business Management An online business management course for EFL teachers.
Observation and Giving feedback Practical help and a set of strategies to manage observation and feedback.	Managing Customer Service An online customer service course for language schools.
Managing Change A framework and practical tools to lead change programmes and respond to change.	Performance Management Performance management for both academic and non-academic staff.



BE THE BEST

TEACHER YOU CAN BE

We are always happy to help you find the perfect course.

If you have any questions about which course is right for you, please contact our friendly team who can speak many languages.

TO ENQUIRE OR TO
BOOK YOUR COURSE

Email: sales@ihlondon.com

Telephone: +44 (0)20 7611 2400

Web: Book online or find your personal sales manager at ihlondon.com/meet-the-sales-team

You can also contact your local Educational Tour Operator and ask to book an IH London course.

TAKE THE VIRTUAL TOUR

Simply download the app 'VR Direct' on your smartphone, put in the code 'gl4ilp' and voilà! If you'd like a pair of (free) IH London VR goggles, please contact sales@ihlondon.com.



OTHER COURSES

AVAILABLE WITH IH LONDON

We teach across the full learning journey for you and your students. Request a brochure, visit ihlondon.com or contact us for more details.



The Executive Centre

Bespoke language training for professionals.



Young Learners

Courses for ages 8-17 at locations across the UK.



Learn English

A full range of English courses for ages 16 and over.



Foreign Languages

We teach over 10 other modern languages.



Evening Courses

We teach a range of evening language classes.



Course information, accommodation and content is subject to alteration at short notice. In these circumstances we will attempt to provide a suitable alternative. For full terms and conditions, please go to ihlondon.com. All content © 2019 International House London.



Start the journey today.

Call: +44 (0)20 7611 2400

ihlondon.com

sales@ihlondon.com



No.1 Language school in Central London
EL Gazette 2019 rankings based on BC inspection reports

Contact us:

Online: ihlondon.com/contact
Telephone: +44 (0)20 7611 2400
Email: sales@ihlondon.com
Find out more online: ihlondon.com

16 Stukeley Street
Covent Garden
London WC2B 5LQ

 facebook.com/ihlondon
 [@IHLondon](https://twitter.com/IHLondon)
 linkedin.com/company/international-house-london
 instagram.com/ihlondon
 [ihlondon](https://whatsapp.com/ihlondon)

TEACHER TRAINING

DATES & FEES

2020

DATES

& FEES

Book at least 3 weeks early for CELTA savings. See website or contact sales for more details.

START TEACHING	START DATES 2020	PRICE
CELTA full-time	06 January, 03 February, 02 March, 30 March, 27 April, 01 June, 06 July, 03 August, 01 September, 28 September, 26 October, 23 November	£1495*
CELTA part-time	11 January, 07 March, 18 April, 16 May, 13 June, 15 August, 12 September, 31 October	£1495*
CELTA Blended	02 February, 16 August	£1550*

* Plus the Cambridge CELTA assessment fee: £156. Cambridge English assessment fees are subject to change by the assessment board.

SHORT COURSES	ENGLISH LEVEL	START DATES 2020	PRICE
Certificate in International Business Training (Cert IBET)	C1 (advanced) and above	20 January, 17 August	£1250 + £135 for Certification
Current Trends	C1 (advanced) and above	06 January, 20 July, 17 August	£760
Content and Language Integrated Learning (CLIL)	B1 (intermediate) and above	06 January, 20 July, 03 August	£760
Practical Teacher	B2 (upper intermediate) and above	06 January, 20 January, 06 July, 20 July, 03 August, 17 August	£760
Language Development and Teaching Skills	B1 (intermediate) and B2 (upper intermediate)	06 July	£760
Life in Britain	B2 (upper intermediate) and above	20 January, 20 July, 03 August	£810
Teaching for Exam Classes	B2 (upper intermediate) and above	03 August	£760
Teaching Young Learners	B2 (upper intermediate) and above	06 January, 06 July, 03 August	£760
Teaching Very Young Learners	B2 (upper intermediate) and above	06 July	£760
Technology for Language Teachers	B2 (upper intermediate) and above	06 January (10 lesson course) 12:15 -13:10 06 July (30 lesson course) 09:00 -12:00	£275 £760
Expert Series: Learn with Adrian Underhill	B2+ (pre-advanced) recommended	13 July	£690

A registration fee of £15 applies to all short courses except Cert IBET.

SATURDAY SERIES	START DATES 2020	PRICE
Language Teacher Refresher	5 February - 07 March, 03 - 24 October	£550
Focus on Young Learners	06 - 13 June, 08 - 15 August	£250*

* £200 for returning CELTA graduates

DELTA	START DATES 2020	PRICE
Face-to-Face Delta 123	16 March, 14 September	£3010*
Blended Delta 123	March and August	£3100*
Distance Delta 123	March and August	£2950*
Module 1 Online	March and August	£690*
Module 2 Face-to-Face	20 January, 20 July	£2255*
Module 2 Online	March and August	£2200*
Module 3 Online	March and August	£425*
Alternative or Additional Module 3: ELT Management	March and August	£525*

* Plus the Cambridge English Delta exam fee: Module 1: £121, Module 2: £151, Module 3: £85. Cambridge English assessment fees are subject to change by the assessment board.

TRAINERS & MANAGERS	START DATES 2020	PRICE
Teacher Trainer Development	03 August	£860
Academic Manager Development	03 August	£725
Business Cultural Trainers Certificate (BCTC)	23 April, 02 July, 03 September, 05 November	£625

A registration fee of £15 applies to all Trainers & Managers courses.

SCHOOLS & ORGANISATIONS	START DATES 2020	PRICE
English as a Medium of Instruction	To suit you	Tailored
IH Certificate in Practical Teaching Skills	To suit you	Tailored
CELT-P	To suit you	Tailored
CELT-S	To suit you	Tailored
Bespoke courses in the UK and across the world	To suit you	Tailored

ACCOMMODATION	PRICE PER WEEK
RESIDENCES	
Chapter Highbury, single en-suite	£330
Chapter Islington, single en-suite	£330
Chapter Kings Cross, single studio	£435
STANDARD HOMESTAY	
Single room with breakfast	£200
Single room with breakfast and 4 evening meals	£235
Single room with breakfast and 7 evening meals	£260
Twin room with breakfast	£170 per person
Twin room with breakfast and 4 evening meals	£195 per person
Twin room with breakfast and 7 evening meals	£225 per person
SUPERIOR HOMESTAY	
Single room with breakfast	£245
Single room with breakfast and 4 evening meals	£280
Single room with breakfast and 7 evening meals	£305
Twin room with breakfast	£205 per person
Twin room with breakfast and 4 evening meals	£240 per person
Twin room with breakfast and 7 evening meals	£270 per person
EXECUTIVE HOMESTAY WITH PRIVATE BATHROOM	
Single room with breakfast	£290
Single room with breakfast and 4 evening meals	£325
Single room with breakfast and 7 evening meals	£350
Twin room with breakfast	£250 per person
Twin room with breakfast and 4 evening meals	£285 per person
Twin room with breakfast and 7 evening meals	£310 per person

IMPORTANT INFORMATION

There is an accommodation booking fee of £45. Our accommodation charges are for 7 nights, arriving Sunday and departing on Sunday. Most homestays and residences can be booked for a minimum of one week. You can extend your accommodation after you arrive, rooms are subject to availability, so please speak to our accommodation team. Sometimes we use agencies to help us to find extra accommodation, which will be organised through our team. We can arrange for you to share a room with a friend, provided you book for identical dates and both of you are training at the school.

SUMMER SUPPLEMENT

There is a £45 per week summer supplement fee for residential and homestay from Sunday 05 July to Sunday 30 August 2020.

TRANSFERS

AIRPORT

Transfers are available from all London airports: Heathrow, City, Gatwick, Luton and Stansted.

Private transfer	£99 (per person, each way)
Shared transfer	£70 (per person, each way)

RAIL

Transfers are available from St Pancras, Eurostar.

Private transfer	£70 (per person, each way)
Shared transfer	£50 (per person, each way)

Arrival transfers should be booked in advance. For return transfers, participants can book in advance or at the school during their course.

INSURANCE

£6.50 per week. View the insurance policy at: ihlondon.com/useful-information/insurance/

PUBLIC HOLIDAYS

There are no lessons or start dates on UK public holidays: 01 January, 10 April, 13 April, 08 May, 25 May, 31 August, 25 December 2020.

BOOKING

CONDITIONS

By making a booking with International House Trust (trading as 'International House London') you agree to the terms and conditions as set out below. Unless specifically agreed in writing, these conditions have precedence over any other communications.

If you have made a booking via an agency, then your contract is with the agent and not with International House London.

Course availability and cancellation

Every attempt will be made to place students on the course of their choice. However, we cannot guarantee a particular course and timetable until the student has taken an entry test and, for some teacher training courses, had an interview. In the event of insufficient applications for a course, the school reserves the right to offer an alternative course of equal value or a refund.

Age

Our minimum age is 18 years.

Insurance

It is highly recommended that all students have comprehensive travel, repatriation, medical and course insurance. For other students we can provide competitively priced student insurance for £6.50/week. Please see www.ihlondon.com/faq/is-insurance-included-in-the-course/ for more details.

British immigration regulations

If the student is a non-EU applicant, they may require a student visa. It is your responsibility to obtain this visa and we are not responsible if a student obtains the wrong visa. If you require a visa and arrive without one, you will not be eligible to attend the school. Please note that all non-EU students must study for a minimum of 15 hours per week to comply with British immigration regulations.

A course may be terminated at any point during its duration if a participant is found not to have leave to remain in the UK or breaches the conditions under which they are in the UK.

Visa applicable support

For the latest information about student visas for the UK, see our Getting a visa page (<http://www.ihlondon.com/useful-information/getting-a-visa/>) or visit the www.gov.uk website.

We are a Tier 4 Sponsor under the UKVI's points-based system (no. 5BY3ENNA5) and we will provide the documentation required for students to apply for study visas where applicable. Documentation in support of study visa applications will only be provided after all fees have been paid.

The school has a legal obligation to collate and maintain application information, as well as passport and visa data, and inform the Immigration Authorities of those students whose attendance falls below the standard required by their visa.

If a visa application is unsuccessful, yet all documentation was correctly submitted, and

you send a copy of the visa refusal letter to our admissions team, and we will arrange a refund. This is provided that you notify us at least four weeks before the start of your course. For visa refusals within four weeks of the start of the course we are unable to refund fees, but you may be able to switch to an alternative course.

For advice on visa regulations, please visit the following website: gov.uk/browse/visas-immigration/student-visas. Alternatively, you can contact the British Embassy in your country.

Attendance and student holidays

Teacher training students are expected to attend their classes regularly and on time. Students forfeit course fees if they are late, absent, or leave before the course ends.

Public Holidays

Unless otherwise stated there are no classes on public holidays applicable to England. There will be no classes from Friday 25th December 2020. Classes restart on Monday 4th January 2021.

Airport and railway station transfers

We can provide transport from your airport or train station to your accommodation at prices stated in our price lists. Once booked these fees are non-refundable irrespective of whether or not the service is used. These fees must be paid at least six weeks before the transfer date.

Code of Conduct

The school reserves the right to terminate an enrolment without issuing a refund, where a participant's behaviour is such that it would be unreasonable for them to continue their studies.

Special offers

Discounts cannot be applied retrospectively to existing bookings and only one discount can be applied to a booking.

Variation to fees

We usually set, and hold, our fees for a calendar year. Fee are chargeable based on the fee for the course published in the brochure for the year in which you choose to study. However, if you book a course before 1st October for the following year you may choose to be charged the fee applicable in the previous year. Please note that if you extend your course, additional weeks will be chargeable at the fee applicable on the date you extend your booking.

Deposits

All our courses require a deposit at the time of booking. Deposits are non-refundable, except under the visa refusal conditions detailed above. Deposits for teacher training courses are £500, except for DELTA courses where it is £750. Deposits for group bookings are 10% of the total course fee.

Subject to a small leeway, to allow for funds to be transferred, until the deposit is paid, the 'booking', remains a quotation or an allocation, and the place(s) are not confirmed; they may be sold to another person.

When tuition fees are due

For courses starting *within eight weeks* the full fee is due at the time of booking. If not paid via our online booking system an invoice will be raised and payment expected on receipt.

For bookings *more than eight weeks* before commencement, fees, less deposit, are due six weeks before the commencement of the course.

We do not allow students owing fees to register for their class or enter our accommodation. Students unable to pay any balance at registration will be turned away and, where applicable parents, agents or sponsors informed.

Accommodation Fees

If you book a residence or family homestay accommodation through us, you need to pay six weeks in advance of your arrival. If you change your accommodation requirements, we can provide a refund as specified below:

- More than six weeks before arrival – full refund
- Between six weeks and three weeks before arrival – full refund less one week
- Less than three weeks before arrival – full refund less three weeks
- After the arrival date – full refund less four weeks

Other Charges

We charge an accommodation fee of £45 to cover our costs in finding you suitable accommodation, either in a student residence or in homestay accommodation. This fee is due upon booking the accommodation.

We understand that you may want to change your course once you are studying with us. Subject to spaces being available you can make changes to your course on payment of £20, except for changes within four weeks of the start date when the fee increases to £300. Any changes after a course has started are likely to result in the loss of fees paid. Similarly, we understand that you may want to change your accommodation, and subject to availability, we can arrange this, subject to a fee of £40.

How to Pay

All fees are stated in GBP. We accept cash at our Stukeley Street Reception. For currencies other than GBP you will be charged the exchange rate applicable at the time of booking plus a handling fee dependent on the currency and amount.

Alternatively, you may pay by card (MasterCard, Visa or JCB) via our website at the time of booking, or by phone. You can also pay via Flywire (www.flywire.com) or bank transfer to 30-65-41, 37995568. Please quote your name in the reference section.

We do not make any charges for payments. We are not responsible for any bank service fees; it is the responsibility of the student to cover any fees required to ensure that we receive the full student fee. Always quote the student number on bank transfers.

Force Majeure

In the event of 'force majeure', such as fire, flooding, infectious diseases and other events outside our reasonable control which may cause the closure of the school, no refund of fees will be made to students, except at the school's discretion in exceptional circumstances.

Your right to cancel

Unfortunately, we cannot offer any refunds for our teaching training courses. This is due to the need to manage class numbers.

Always quote
your student
number on bank
transfers or
correspondence