



Southbourne School of English

Established 1966

Accredited by the
BRITISH COUNCIL
for the teaching
of English in the UK

 **Quality
English**



We prepare for
Cambridge
English Qualifications

TRINITY
COLLEGE LONDON
Registered Exam Centre 29174



Study. Socialise. Enjoy.

Here at Southbourne School of English, Bournemouth, we do everything we can to help our students make the most of their time at our language school.

We believe students learn more in a friendly, safe learning environment. As well as expert tuition, we encourage a sociable atmosphere, and organise activities that give students a taste of the English language and culture.

A message from Paul, the Managing Director:

Since my grandfather founded the school in 1966, we've helped thousands of students from around the world make real progress with their English.

Today I run the school with my father, Italo, Kathryn, our Principal, and an expert team of staff and teachers. Together we have years of experience in helping students get the most from their courses.

We take great pleasure in seeing our students enjoy their time with us here in Bournemouth – and watching their English skills improve.

I look forward to welcoming you very soon!



Paul Gallina
Managing Director

Why Southbourne School of English?



Popular Location

We make learning English fun. A language school in Southbourne, a suburb of Bournemouth, ideally located by the sea in one of the UK's most popular locations for language students.



Making Friends for Life

Thousands of students of all ages have passed through our doors since 1966. Many of our students make friends for life.



Latest Technology

We run English language courses in well-equipped classrooms, all with interactive smartboards.



Cultural Trips

As well as excellent teaching, our students benefit from trips to famous British places of interest.



Courses for All Ages & Levels

We offer adult and junior language courses. Whatever your language level, we will have a course that suits you. With examination courses such as Cambridge First (B2), Cambridge Advanced (C1), Cambridge Proficiency (C2) and IELTS, if you are looking to study English for university, college, work or anything else, we can help you achieve the level you need and make memories you will have forever!

All year-round, students study and socialise with us. But best of all; we enjoy the experience together.



School Facilities

Everyone learns better in the right environment.

We have 22 light and airy classrooms equipped with interactive smartboards and air conditioning units.



We make sure our students have everything they need outside class too:



A large café area with computers that students can use in breaks. The café serves hot meals, sandwiches, salads and snacks as well as hot and cold drinks.



Access twice a week to a sports hall, swimming pool, tennis courts, football and rounders pitches during our summer residential course.



A library with a wide selection of graded readers to suit all English levels.



A large cinema room, with surround sound, for film nights outside the summer period.



Free Wi-Fi access throughout the school and garden during school hours.



A pleasant garden with sunshades and benches.



A listening centre supervised by a teacher.



To view more facilities,
please visit our gallery:

southbourneschool.co.uk/news/gallery/



Adult Language Courses

Whatever your ability from beginner to advanced, we have an adult course for you at Southbourne School of English.

You can choose from a range of adult courses, each offering something different.



The important thing for you is to find the course that will support you in achieving your goals.

	General Course (15 hours)	Intensive Course (+6 hours)
Mid-June to end of August	08:45 – 09:45	Monday to Thursday 12:30 – 13:45
	10:00 – 11:00	
	11:15 – 12:15	Friday 12:30 – 13:30
September to mid-June	09:15 – 10:15	Monday to Thursday 13:45 – 14:30 14:45 – 15:30
	10:30 – 11:30	
	11:45 – 12:45	

Mid-June to end of August: Maximum class size 16
 September to mid-June: Maximum class size 14

Course Objectives

General Course

By following a General English Course, students will increase their accuracy in grammar and will increase their competence and confidence in the skills of reading, writing, speaking and listening.

Intensive Course

Students following the Intensive English Course follow the same programme as those in the General English Course, with the addition of a 6-hour negotiated syllabus. The aim here is to fill in gaps in the students' knowledge and expertise and to address students' particular needs.

Types of Courses

General & Intensive Courses

Our General and Intensive courses are designed to meet your language needs. The General Course has 15 hours of teaching timetabled per week, and the Intensive Course has 21 hours. Before you book, tell us what you want to achieve and we'll find the course for you.

General/Intensive Course PLUS

The General/Intensive Course PLUS suits students with limited time to improve their English for work and study. This course is perfect for business people and mature students.



Summer Vacation Courses

Using the summer holiday as a time to learn English is a very popular choice for students. As well as a high standard of teaching, you can enjoy Bournemouth at its very best in the summer weather.

Examination Courses

You can use your time with us to gain an internationally recognised language qualification. If you plan to enter higher education and widen your career prospects, our Examination Courses are for you. Southbourne School of English can prepare you for the examination you wish to take. We'll help you gain the skills, techniques and confidence to pass.



To find out more about our
Adult Courses please visit:

[southbourneschool.co.uk/language-courses/
adult-language-courses/](https://southbourneschool.co.uk/language-courses/adult-language-courses/)



Adult Sample Week Timetables

Senior/16+ Summer Programme

Sunday	Arrival of students / Optional excursion for existing students				
	Morning 08:45 – 12:15	Lunch 12:30 – 13:45	Afternoon 14:00 – 17:30	Evening (optional)	
Monday	1st day: 08:15 Check in, Entrance test, coach tour of local area	Intensive lessons (if booked)	1st day: Walking tour of Southbourne and beach activities for new students	Free time with host family	
	Existing students – Lessons		Existing students – Christchurch medieval town and market		
Tuesday	Lessons 08:45 – 09:45 10:00 – 11:00 11:15 – 12:15		Half day to Bournemouth with quiz	*Splashdown 17:30 – 21:00	
Wednesday			Beach volleyball and beach football	*Disco (under 18's) *New Forest pub (18+) 18:30 – 22:30	
Thursday			Half day to Hengistbury Head nature trail	*Bowling 19:00 – 21:00	
Friday			Castlepoint shopping trip	Free time with host family	
Saturday			07:30 – 19:30 Full day excursion to London with walking tour		
Sunday	Full day optional excursion to Chessington World of Adventures Half day optional excursion to The New Forest and Beaulieu Motor Museum				

Maximum class size 16
 *See website for additional costs

Winter Programme General Course

Sunday	Arrival of students			
	Morning 09:15 – 12:45	Lunch 12:45 – 13:45	Afternoon 13:45 – 17:30	Evening (optional)
Monday	Check-in, Entrance test	Lunch break	Free afternoon or Listening Centre (optional) 15:45 – 16:45	Free time
Tuesday	Lessons 09:15 – 10:15 10:30 – 11:30 11:45 – 12:45			Film night 19:30 – 21:30
Wednesday				Karaoke night 19:30 – 21:00
Thursday				Quiz night 19:30 – 21:30
Friday			Half day optional excursion to Winchester	Free time
Saturday	07:30 – 19:30 Full day excursion to London with walking tour			
Sunday	Departure of students / Free day with host family			

Maximum class size 14

Winter Programme Intensive Course

Sunday	Arrival of students			
	Morning 09:15 – 12:45	Lunch 12:45 – 13:45	Afternoon 13:45 – 17:30	Evening (optional)
Monday	Check-in, Entrance test	Lunch break	Lessons 13:45 – 14:30 14:45 – 15:30	Free time
Tuesday	Lessons 09:15 – 10:15 10:30 – 11:30 11:45 – 12:45		Free afternoon or Listening Centre 15:45 - 16:45	Film night 19:30 – 21:30
Wednesday				Karaoke night 19:30 – 21:00
Thursday				Quiz night 19:30 – 21:30
Friday				Half day optional excursion to Winchester
Saturday	07:30 – 19:30 Full day excursion to London with walking tour			
Sunday	Departure of students / Free day with host family			

Maximum class size 14

Junior Language Courses

We run high-quality, interactive Junior Courses for students aged 10-15 at our main school and 9-16 at our summer residential centre.

Junior students can study at our school and live with a host family during spring break and summer holidays, or stay at our residential centre during July.

Please note, we can accept 9 year olds in class but we are unable to accommodate them.

	Spring Junior Course at Southbourne Main School (Individual Students)	Summer Junior Courses at Southbourne Main School (Individual Students)	Junior Courses at Bournemouth Collegiate School	Junior Group Courses at Southbourne main school
Ages	10 to 15	10 to 15	9 to 16	10 to 15
Accommodation	Homestay	Homestay	On-site accommodation – single to multi-bed dormitories & Homestay	Homestay
Hours of tuition per week	15 hours	15 hours	15 hours	15 hours
Availability	Please refer to website for dates	Please refer to website for dates	Please refer to website for dates	Please refer to website for dates

*Spring/Summer Junior Courses and Junior Group Courses at Southbourne Main School: Maximum class size 16
Junior Courses at Bournemouth Collegiate School: Maximum class size 18. Average class size 14*

Spring Courses

Our 4-week Spring Junior Course is getting more and more popular and runs from the end of March until the end of April.

The Spring Junior Course is for individual students aged between 9 and 15. We are very experienced in developing our junior students' abilities, skills which we hope will be with them forever.

Courses can be booked for a minimum of one week, but many students choose to stay longer. Students have 15 one-hour lessons each week, from Monday to Friday, a daily activity programme and a weekend excursion. Lessons will be in the morning or afternoon.

Summer Courses

We have been taking care of junior students and providing English language courses since 1966. Our Summer Junior Course runs from the middle of June until the end of August, please check website for dates. These courses are for individual students aged 9 to 15 (9 to 16 in residence, 10 to 15 in homestay). We can also accept 9 year old students at the main school, providing that they are staying in accommodation with their own family member.

You can book a course for a minimum of one week but many students choose to stay longer. Students have 15 one-hour lessons each week, from Monday to Friday in the afternoon. Includes a daily activity programme and a weekend excursion.



Southbourne Main School



Stonehenge

Individual students can join our spring and summer courses, while groups are welcome all year-round.



To find out more about our Junior Courses please visit:

southbourneschool.co.uk/language-courses/junior-language-courses/

Junior Language Courses

Residential Courses

Founded in 1899, Bournemouth Collegiate School is a traditional British boarding school. Just two minutes from the beach, the school is surrounded by eight acres of private tree-lined land, providing privacy and security for our students.

We welcome students from the ages of 9 to 16. The school runs for four weeks from early July to early August. Please see website for dates.

The school offers a wide range of excellent facilities including:

- A large, modern, recently-refurbished dining room.
- Interactive smartboards in all classrooms.
- Tennis courts.
- An all-weather astro pitch used for football and other outside games and activities.
- A 25m indoor heated swimming pool.
- A large sports hall offering a full Olympic-size basketball court.
- A large sports field for football, volleyball etc.

Year-Round Group Courses

We run closed group courses at Southbourne School all year-round. The courses can be for a minimum of one week. Our main school takes students aged 10 and above.

We also offer our group students the chance to take examination courses. These are a very popular way to gain certified qualifications at the end of their study.

Our Year-Round Group Courses include:

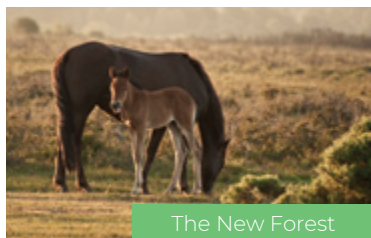
- 15/21 hours of tuition a week.
- Accommodation with local police-checked homestays, all within walking distance of the school.
- Choice of hot or cold lunch at school.
- Weekend excursions.
- A varied social programme with lots of fun and interesting daily activities.
- Optional evening activities.
- A certificate with level of attainment.
- Classrooms fitted with interactive smartboards and air conditioning units.
- Modern, bright classrooms with comfortable furniture.



BCS Sports Hall



BCS swimming pool



The New Forest



Windsor Castle

Day Trips

Weekend trips are an ideal way to see more of the UK. Popular destinations include London, Stonehenge, the historic city of Oxford, the ancient Roman spa town of Bath, the beautiful New Forest national park and the royal residence of Windsor Castle. We also arrange trips to Winchester and Salisbury to their magnificent cathedrals and many more interesting towns and cities.

Evening Activities

We open the school three evenings a week for social activities such as film nights, quizzes and games evenings. These social events are a great chance to practise your English while making new friends.



To find out more about our Junior Courses please visit:

southbourneschool.co.uk/language-courses/junior-language-courses/

Junior Sample Week Timetables

Junior Spring Programme

Sunday	Arrival of students			
	Morning 09:00 – 13:00	Lunch 13:00 – 14:00	Afternoon 14:00 – 17:30	Evening (optional)
Monday	1st day: Check-in, Entrance test	Lunch at school	Walking tour of Southbourne and beach games	Free time with host family
	Existing students – Half day to Christchurch medieval town and market		Existing students – Lessons	
Tuesday	Half day to Bournemouth with photo quiz		Lessons 14:00 – 15:00 15:15 – 16:15 16:30 – 17:30	*Film night 19:00 – 21:00
Wednesday	Half day Poole town tour and waterfront museum			*Karaoke night 19:30 – 20:30
Thursday	Half day to Castlepoint shopping centre			*Quiz night 19:00 – 21:00
Friday	Half day to Hengistbury Head nature trail			Free time with host family
Saturday	07:30 – 19:30 Full day excursion to London with walking tour			
Sunday	Departures or free day with host family			

Maximum class size 16

*See website for additional costs

Junior Summer Programme

Sunday	Arrival of students / Optional excursion for existing students			
	Morning 09:00 – 13:00	Lunch 13:00 – 14:00	Afternoon 14:00 – 17:30	Evening (optional)
Monday	1st day: 08:15 Check in, Entrance test, coach tour of local area	Lunch at school	Walking tour of Southbourne and beach games	Free time with host family
	Existing students – Half day to Christchurch medieval town and market		Existing students – Lessons	
Tuesday	Mini-Olympics		Lessons 14:00 – 15:00 15:15 – 16:15 16:30 – 17:30	*Splashdown 17:30 – 21:00
Wednesday	Half day to Bournemouth with quiz			*Disco 18:30 – 22:30
Thursday	Half day The New Forest tour			*Bowling 19:00 – 21:00
Friday	Half day Moors Valley Country Park visit			Free time with host family
Saturday	07:30 – 19:30 Full day excursion to London with walking tour			
Sunday	Full day optional excursion to Chessington World of Adventures Half day optional excursion to The New Forest and Beaulieu Motor Museum			

Maximum class size 16

*See website for additional costs

There's more than just studying in Bournemouth.

At Southbourne School of English we organise a fun and varied social programme with friendly activity leaders. There are many beautiful attractions to visit in Dorset.

On our activity programme you will have the opportunity to visit London, Oxford, Bath, Stonehenge and the historical Jurassic coast.

Evenings are fun, too, with social events such as film nights, quizzes and cultural theme nights. Our programmes include a large selection of sports including football, volleyball, basketball, mini golf, rounders, cricket and swimming. For an additional fee we can also arrange wind-surfing, paddle boarding, kite surfing and sailing lessons locally or in Poole Harbour, which is the largest natural harbour in the world.

BCS Summer Programme 2/4 Week Course

	Morning	Afternoon	Evening
Sunday	Students arrive		School welcome speech & orientation: selfie challenge
Monday	09:00 – 12:00 Placement test	Southbourne walking tour & beach: team-building games	Welcome party: team-building & traditional English games
Tuesday	Lessons 09:00 – 12:30	Half day excursion – Winchester	Zumba / Arts & crafts: clay modelling
Wednesday	Lessons 09:00 – 12:30	FIFA Football Coach / Swimming / Arts and crafts: design a t-shirt	BBQ & problem-solving project
Thursday	Excursion to London		Film night / Board games
Friday	Lessons 09:00 – 12:30	Half-day excursion – The New Forest	Beach themed disco
Saturday	Lessons 09:00 – 12:30	Tennis Coach / Swimming: water polo competition / Arts & crafts	Murder mystery
Sunday	Beach games and sandcastle competition		Quiz Night: English culture
Monday	Lessons 09:00 – 12:30	Excursion – Bournemouth	Carnival / Casino night
Tuesday	Lessons 09:00 – 12:30	Half-day excursion – Durdle Door & sea swimming	Dance / Table tennis tournament / Sports
Wednesday	Lessons 09:00 – 12:30	English sports day	BBQ & talent show preparation / Karaoke
Thursday	Excursion to Bath		Film night / Arts & crafts: papier maché
Friday	Lessons 09:00 – 12:30	Tennis coach / Swimming / Sports	Neon disco: face-painting
Saturday	Lessons 09:00 – 12:30	English field games: rugby, cricket & rounders	Talent show
Sunday	Students departure		

Maximum class size 16. Average class size 14



Accommodation & Welfare

We want you to feel like you are at a 'home away from home.'

We want your stay at Southbourne School of English to be as comfortable and memorable as possible. After school there will be opportunities to spend time with your hosts or in your private accommodation.

Homestay is our most popular choice. It makes a huge difference to how well you learn if you feel happy and at home in your choice of accommodation.

Some of our mature long-term students prefer private accommodation. There is a range of options, all within walking distance of the school.



Southbourne School of English





Welfare

Oriana is our full-time Welfare Officer, who is always happy to help. Her job is to make sure that our students are happy and well. So no matter how big or small the problem is, Oriana can give advice.

If you have any questions please email
oriana.ludolini@southbourneschool.co.uk

If you need a medical or dental appointment, most students see their host's doctor or dentist, but we can help to arrange appointments. Before travelling to Britain, we recommend you buy insurance. Students from the EU can apply for an EHIC card.

We have a 24-hour emergency helpline for hosts and students. A member of staff will assist you in an out-of-hours emergency.

Senior students under the age of 18 years who are travelling independently, will meet with our Welfare Officer once a week. They talk about how they are settling into life in England.



Oriana
Welfare Officer

Homestay

We make sure that all our students have a happy, safe home to return to after school.

All our hosts have been carefully selected by us and some have been working with us for many years. A typical homestay provides a homely feel, and consists of one or more adults with or without children. We have a large selection of families to choose from.

We have a designated Accommodation Officer who visits the homes to make sure that they are of a high standard. We believe that choosing the right host for you is important as we want you to feel comfortable, happy and safe.

All of our homestays are within walking distance of the school and adults aged 18+ are guaranteed single rooms all year-round unless they ask to share.



“My host family are really friendly. They are polite, communicative and help me in all situations if I need it. The food is very tasty and my room is very tidy, so I’m happy.”

– Victoria

By living with a host, you'll enjoy home comforts and learn as much as you can about the English way of life.

Having every opportunity to practise your English is important. We make sure that you aren't in the same house as another student of the same nationality. You'll learn much more by speaking in English whenever possible.

During our quieter seasons, students can have a room to themselves, unless they ask to share. As it's busier in the summer, students under 18 years old share a twin-bedded room.

What we need to know from you

The more we know about your needs, the more we can do to help. Whether they are special accommodation requests, allergies or dietary requirements, let us know before arriving. We want to match you with the host best suited to you.

Many hosts in England have pets. Tell us if you do not want to stay with a family with animals and we'll do our best to help.





Guesthouses & Hotels

Bournemouth has a wide range of small hotels and guesthouses.

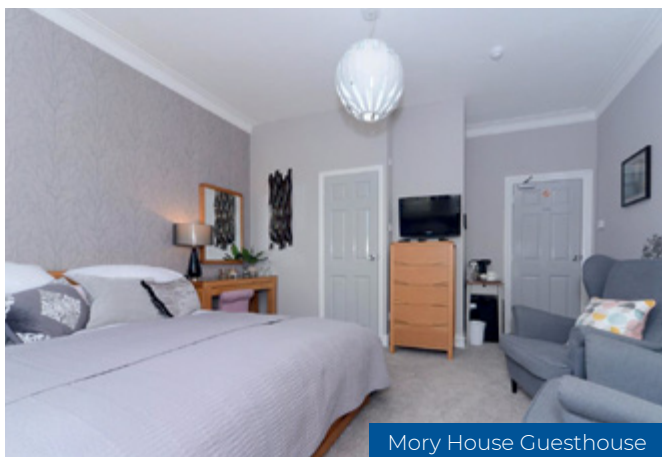
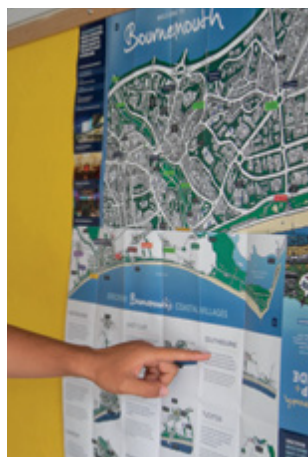
Guesthouses are like small hotels, often family run, and offer great value for money. We visit all of the guesthouses and hotels to make sure that they meet our standards of quality and comfort.

Self-catering

Students taking longer courses may prefer living in houses or flats rather than with a host. The houses and flats we recommend are all within the town and are fully equipped.

Remember living on your own will limit your exposure to British culture.

www.bournecoast.co.uk



Mory House Guesthouse



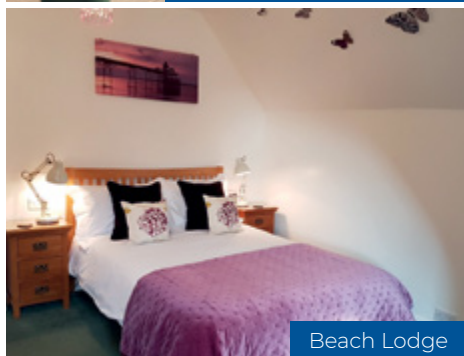
Southbourne Beach



Southbourne High Street



Southbourne High Street



Beach Lodge

Recommended Guesthouses & Hotels

Here are some guesthouses and hotels that we recommend:

1. Mory House
www.moryhouse.co.uk
2. Beach Lodge
www.beach-lodge.co.uk
3. Crossroad Hotel
www.crossroads-hotel.co.uk
4. Shore Line
www.shorelinesouthbourne.com
5. Sun Haven
www.sunhavenholidayapartments.co.uk
6. Ramada Encore
www.ramadaencorebournemouth.co.uk
7. Hilton Hotel
www.hilton.com/bournemouth
8. Bournemouth Highcliff Marriott
www.marriott.co.uk/hotels/travel/bohbm



Studying in Bournemouth

Southbourne sits between Bournemouth and Christchurch on the south coast of England. It's a popular place to relax by the sea.

From the beach there are stunning views of the Isle of Wight, the Jurassic Coast, which is a designated World Heritage site and Sandbanks, one of the most exclusive addresses in Britain.

During the summer, the beach comes alive. Students and families are often seen enjoying the warm summer evening on the beach. There are restaurants and activities available all year-round and within walking distance of or a short bus ride from the school.

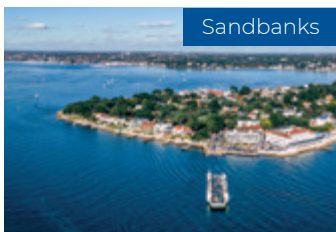
If the beach isn't enough, there is a wide variety of shops and restaurants along the nearby high street.

"Studying at Southbourne School of English was an enriching experience for our students. Some of our pupils have already been here three times and they still want to come back."

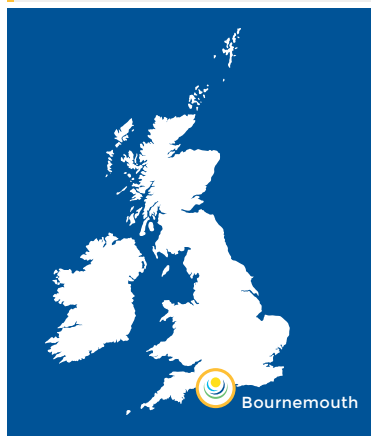
– Joan Nicvas & Carme Cugat,
Group Leaders from Spain



Jurassic Coast



Sandbanks





Pavillion Theatre



Russell-Cotes Art Gallery & Museum

Bournemouth

There is lots to do in Bournemouth. The town centre has a beautiful Victorian garden and if you follow the River Bourne it will lead you to the beach. Bournemouth offers lots of activities as it is a popular, friendly, cosmopolitan, university town. During the day you can enjoy mini golf, volleyball, a museum visit, a trip to one of our cinemas or even an ice cream on the pier. In the evening you can be entertained every night with clubs, bars, restaurants, live music and theatre events.

Poole

Poole Harbour is the largest natural harbour in the world! You should board a ferry at Poole Quay and enjoy the scenic trip to Brownsea Island. It's the best way to see Poole Harbour and visit the island with its large population of native red squirrels.

Top things to do in Bournemouth:

1. Have a swim in the sea! There are plenty of watersports to try such as: kayaking, sailing, jet-skiing, snorkelling, windsurfing and wakeboarding.
2. Go ice-skating. In the winter months, an ice rink opens up to the public.
3. Walk along the beach. Enjoy a scenic stroll along the promenade.
4. Visit all the parks and gardens, including the large aviary with many exotic birds in the Lower Gardens.
5. Go to any of the entertainment venues. The BIC, BH2 Leisure Complex and Pavilion Theatre offer live music, films, restaurants, musicals, comedy, ballet and ice shows.
6. Eat fish and chips on the beach – the perfect combination. You can't get more British than that.
7. Enjoy a cream tea – a loved British tradition. A perfect mix of scones, jam and clotted cream, with a cup of hot tea.
8. Try out another British classic, the picnic. Relax outside with your friends on the beach or in the gardens.
9. Visit the Russell-Cotes Art Gallery & Museum where you can see treasures from around the world.
10. Last but not least, go on a shopping spree. Bournemouth has great shopping centres to satisfy your shopping desires.



To find out more about the Location please visit:

southbourneschool.co.uk/studying-in-bournemouth/



Accreditations & Testimonials

Accreditations

To ensure our students are provided with the best educational experience at Southbourne School of English, we are measured and accredited by some of the top language authorities in the country. These include:

Accreditations

Accredited by the
 **BRITISH COUNCIL**
for the teaching
of English in the UK

British Council

Professional Associations



Quality English



English UK

"I have been staying with the same host family for the last 10 years. I feel like they are my family, and to describe them as anything other than my family would not be right."

– Graciela, one of the Group Leaders from Argentina

Testimonials

We have welcomed many thousands of students through our doors since we opened in 1966. Here are some of the comments they gave...



"The teachers are very nice helping to improve our English using different activities and exercises."

– Emil



"... You made me feel like I was right at home in a foreign land thousands of miles away from my own family and friends... giving me advice about places to eat, sights to see, and parks to visit... You taught me so much... I can't thank you enough for everything that you did for me."

– Abudi



"... The school teaches you not just grammar or listening or writing, they also teach you how to get along with people, so they help you spiritually... Thank you for the opportunity of a lifetime. Now I'm looking forward to going back home and going to university, then coming back to Bournemouth because now I'm in love with this city."

– Santiago



"All the teachers are amazing! The courses are always very interesting – I learned and improved my English a lot. The school trips were always interesting and fun. I learned a lot about other cities and their history. Neil is an awesome guide! The reception staff were very friendly, they try to help you with everything, just great! I had a wonderful time with my host family. Fantastic people."

– Lara





Welcome to the
SCHOOL OF
ENGLISH

Reception &
Visitors



Students' Entrance
in Summer Months



How to book your course



Find a suitable course

Every student's level of English is different, so we take great care to match your course to your language ability and needs.

Please refer to the information sheets for dates and prices or visit:

southbourneschool.co.uk/language-courses/



Complete our enrolment form

You can do this by using the enrolment form provided with this brochure

To download and print your own form, please visit:

southbourneschool.co.uk/language-courses/how-to-book-your-course/



Make a payment of £90 registration fee

Your place at the school will be confirmed once we have received the above-mentioned payment. All fees must be paid at least 4 weeks before the start of the course.



Read our Terms & Conditions

Please read our Terms & Conditions carefully and confirm you have understood them before you book and pay for your course.

To read our full Terms & Conditions, please visit:

southbourneschool.co.uk/terms-conditions/



[/SouthbourneSofE](https://twitter.com/SouthbourneSofE)



[/SouthbourneSchool](https://www.facebook.com/SouthbourneSchool)



[/southbourneschoolofenglish](https://www.instagram.com/southbourneschoolofenglish)

Southbourne School of English
30 Beaufort Road
Southbourne
Bournemouth
Dorset
BH6 5AL

+44 (0) 1202 422300

+44 (0) 1202 422022

+44 (0) 1202 422023

1966@southbourneschool.co.uk



Bournemouth

Getting Here

Bournemouth is well-connected. Our local airports, Bournemouth International and Southampton International, are within easy reach. There are excellent train and coach links between all the airports. If you wish, we can arrange a private taxi transfer from a number of airports.

For trains:

thetrainline.com/

For coaches:

nationalexpress.com/

For details about getting to the school, contact us at 1966@southbourneschool.co.uk or please visit:

southbourneschool.co.uk/contact-us/