

# Programmes & Fees 2022



The **modern** way  
to learn a language

**LEO**   
LANGUAGES  
[www.leolanguages.com](http://www.leolanguages.com)

# Our experience makes the difference



Leo Languages has  
the right course for  
you whatever your age  
or needs





# “ A complete language solution whatever your level or budget ”

4	<b>ILH</b> Live and study in your teacher's home	<b>Worldwide</b> Adults & Juniors
14	<b>English in Margate</b> Study in a boutique school by the seaside	<b>United Kingdom</b> Adults & Juniors (14+)
36	<b>English On Sea</b> Mini-stays (home stay, residential) by the seaside	<b>United Kingdom</b> Juniors
38	<b>Home Group 6</b> Study in a small group in your teacher's home	<b>United Kingdom</b> Juniors
40	<b>English in a Castle</b> Study in a beautiful castle by the seaside	<b>United Kingdom</b> Juniors
42	<b>Junior Residence</b> Live and study in an English public school	<b>United Kingdom</b> Juniors
44	<b>Train to Teach English</b> For native and non-native speakers	<b>United Kingdom</b> Adults (18+)
46	<b>Languages Now</b> Learn online, face to face	<b>Worldwide</b> Adults & Juniors
46	<b>Language Teacher Guide</b> Explore a foreign city with your teacher	<b>Worldwide</b> Adults & Juniors
46	<b>Leo Languages Abroad</b> Finding the right course for you	<b>Worldwide</b> Adults & Juniors



# International Language Homestays

[WWW.ILH.COM](http://WWW.ILH.COM)

## The Homestay Experience



The homestay experience includes accommodation and all meals, and you are part of your host teacher's social and family life after class.

Because you live in your host teacher's home and use the language all the time, the learning process never stops - you learn during lessons, during meals, on trips and when enjoying activities.

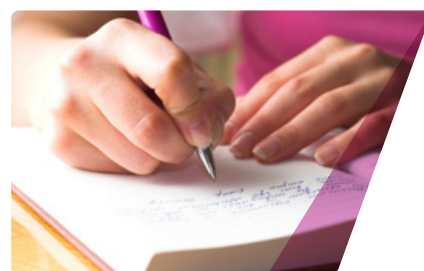
We choose the host family with your interests in mind, and a special diet or other special requests are taken into consideration.

## The ILH Way

After 30 years of experience we know that studying and living with a teacher in their home is one of the most effective and enjoyable ways to learn a language.

You live in your teacher's comfortable home and can choose to have 15, 20, 25 or 30 full hours of lessons per week.

You receive tailor-made lessons at your pace, giving you confidence and helping you progress quickly. Your teacher plans lessons according to your interests and needs.







//  
**ILH has over 30  
years' experience  
in teaching  
students from  
all walks of life**  
//

## Total Immersion

Personal attention is guaranteed from start to finish. Your individually designed course takes your interests, language needs and personal objectives into consideration.

Living in your teacher's home and participating in their daily family life immerses you fully in the language you are learning. Language practice continues throughout the day: during meals, on trips and when enjoying activities with your hosts. Your language homestay guarantees an effective course as well as an enjoyable and sociable stay.

## Special Courses

### Executive Plus

Designed for business and professional people and those with specific language needs related to their job. With this option we include a pre-course client appraisal, specific work-related language teaching and specialist course materials.

Specialised language tuition is available whatever your needs, for example vocational areas such as law, finance, banking, accounting, marketing, sales, aviation, medicine and more.

### Exam Preparation

Designed to prepare you for a language examination and includes examination preparation materials.

## Local Support

Your stay is carefully supervised and supported from start to finish by the local organizer. The local organizer is always available to help you with any questions you have concerning your course or stay.

## Our Host Teachers

Our teachers are chosen for their ability to make you feel completely at home and for their enthusiasm and expertise in giving one-to-one tuition. Your age, interests, personal and language needs are all taken into account by the local organizer when selecting the most suitable host teacher for you.



### Locations

England, Scotland, Ireland, Malta, France, Spain, Italy, Portugal, Germany, Austria, Romania, Czech Republic, Turkey, USA, Canada, Australia, New Zealand, Oman, China, Japan, Norway, Sweden, Guadeloupe, South Korea, Brazil, South Africa, Ukraine & Russia.



**Duration** Unlimited



**Ability** All levels



**Maximum Class Size**

One to One, Couples and Families



**Lessons**

15, 20, 25 or 30 hours per week



**Course Dates** All Year



**Age** Any Age



“ Explore the city with your teacher “

## Additional Options

[WWW.ILH.COM](http://WWW.ILH.COM)

To give you the best experience, you can add different options to your course. All sports, such as golf, tennis, horse riding, dance and cultural activities can be booked before arrival.

### Add sight-seeing to your ILH course



By adding City Plus or City Experience to your course you can combine sight-seeing with learning. With your teacher or an adult family member, you can visit a nearby city, learn about the local history and use the language you are studying.



### Add some local culture to your ILH course



Add the City Plus option and enjoy half or full day trips with your teacher or an adult family member. You visit local places of interest, historic and cultural centres and have the opportunity to learn more about the traditions, heritage and culture of the country you are studying in.



### Add a favourite activity to your ILH course



If you add the Hobby Plus option, you can combine learning with your favourite activity: horse-riding, golf, dancing, sailing, cookery, scuba-diving or other hobbies.







“ Learn and make new friends ”

# ILH Summer Special Course

[WWW.ILH.COM](http://www.ilh.com)

## Shared course for younger learners



Ideal for younger students who want to share their language homestay with one or two other students of a different nationality. The course is for students who already have some English language learning experience.

### 1 Lessons

Students have 15 hours of lessons per week in a relaxed and friendly environment. Some younger students feel happier about sharing lessons in a teacher's home with another student.

### 3 Host Teachers

Students stay with a friendly local host teacher family in Southern England where they are welcomed as part of the family during their stay.

### 2 Location

In Kent and Essex there are many historic castles, medieval towns and cities, a lot of beaches and the beautiful countryside for students to enjoy in their free time.

### 4 Shared Course

Sharing a course with other students of a different nationality is a very motivating way for younger students to learn.



Please note: This is an extra option. Younger students can always book the one-to-one course in all locations at all times of the year.



- Locations**  
Kent and Essex (UK)
- Duration** 2 - 4 weeks
- Ability**  
Elementary to advanced (A2 - C1)
- Maximum Class Size**  
3 Students
- Lessons**  
15 Hours per week
- Course Dates**  
Available in July - Aug
- Age** 13 - 17



# International Language Homestays

WWW.ILH.COM

## Languages and destinations

### ENGLISH

England	Kent, Sussex, East Anglia (Essex, Suffolk & Norfolk), Devon & Cornwall, Wiltshire & Dorset, Yorkshire & Lancashire also Channel Islands (Jersey & Guernsey)
England - City	London
Scotland	Edinburgh, Glasgow, Isle of Bute & the Highlands
Republic of Ireland	Dublin, Cork & Shannon regions
Malta	Various locations on the island
France	Dordogne, Charente, Deux Sevres, Provence, Normandy, Brittany, Languedoc-Roussillon, Avoilles-Limouzine & Poitiers region
Spain	Andalucia, Galicia & Costa Blanca
Portugal	Algarve
Italy	Pisa, Portoferraio (Island of Elba) & Caminata
USA	Boston, San Francisco, New York & Florida
Canada	Toronto, Vancouver & Vancouver Island
Australia	Sydney, Perth & Brisbane
New Zealand	Auckland
South Africa	Cape Town

### FRENCH

France	Paris (Versailles), Montpellier, Tours, Marseille & Provence Region (Nice, Toulon, Saint-Raphael, Avignon)
Guadeloupe	Guadeloupe

### GERMAN

Germany	Cologne, Dusseldorf, Munster, Paderborn, Hannover, Frankfurt, Berlin, Stuttgart & Munich
Austria	Vienna

### ITALIAN

Italy	Rome, Pisa, Marsiliana, Portoferraio, Aosta, Trento, Bergamo & Caminata
-------	---

### SPANISH

Spain	Madrid, Barcelona, Alicante & Basque Country	Argentina	Buenos Aires
-------	--	-----------	--------------

### RUSSIAN

Russia	Moscow & St. Petersburg	Ukraine	Kiev
--------	-------------------------	---------	------

### PORTUGUESE

Portugal	Lisbon & Porto	Oman	Muscat
Brazil	Rio de Janeiro	Morocco	Casablanca

### TURKISH

Turkey	Istanbul	Norway	Oslo
--------	----------	--------	------

### CZECH

The Czech Republic	Prague	China	Guangdong (HKG)
--------------------	--------	-------	-----------------

### ROMANIAN

Romania	Iași	Japan	Tokyo
---------	------	-------	-------

### SWEDISH

Sweden	Stockholm	South Korea	Seoul
--------	-----------	-------------	-------

Teacher families may live in the outlying areas of the cities, rather than in the centre.



## Standard Course

Our Standard Course is available worldwide for as many weeks as required, for all ages and levels

- Arrival any Sunday throughout the year. Lessons start on Monday.
- Weekly fees (up to 7 nights) include:
  - Full-board accommodation in the teacher's home.
  - Tuition with pre-course level assessment test and use of suitable course materials.
  - In addition to the number of formal tuition hours booked, the study programme will include approximately one hour self-study daily.
  - Minimum of three accompanied outings per week to places of local interest.
  - Certificate of Attendance and progress report at the end of the course.

There is a 10% discount for short stays of 4 days (3 nights). The full number of hours is taught. There is a 15% discount for friends and relatives with a similar language level sharing tuition in the same teacher family. For relatives and friends sharing a host teacher family without tuition the daily rate for 'Extra Day's Homestay' applies. A discount of 50% applies to children under the age of 8 who must be supervised by an adult at all times.

There is a supplement of £80, €100 or \$100 for all stays that include the Christmas period (25 and/or 26 December) or the New Year period (31 December and/or 1 January). For a stay that includes both the Christmas and the New Year periods the supplement is charged twice.

Registration fee of £50, €80 or \$80.

### 24/7 Supervision Supplement for students under the age of 18 of £100, €100 or \$100 per week

Students under the age of 18 must book this supplement unless they are taking the City Plus option, the Summer Special Course or are accompanied by an adult. Please see 'Students Under 18' on page 12 for more information.

Language	Destination	Currency	Number of hours' tuition per week				Extra Day's Homestay
			15	20	25	30	
English	England & Scotland	STERLING	£ 960	£ 1100	£ 1240	£ 1380	£ 90
	England (London)	STERLING	£ 1050	£ 1190	£ 1330	£ 1470	£ 110
	Republic of Ireland & Malta	EUROS	€ 1150	€ 1310	€ 1470	€ 1630	€ 100
	France, Spain & Portugal	EUROS	€ 1000	€ 1160	€ 1320	€ 1480	€ 100
	Italy	EUROS	€ 1100	€ 1260	€ 1420	€ 1580	€ 100
	USA & Canada *	US DOLLARS	\$ 1500	\$ 1700	\$ 1900	\$ 2100	\$ 150
	Australia, N Zealand & S Africa	STERLING	£ 960	£ 1100	£ 1240	£ 1380	£ 100
French	France & Guadeloupe	EUROS	€ 1220	€ 1380	€ 1540	€ 1700	€ 100
Italian	Italy	EUROS	€ 1220	€ 1380	€ 1540	€ 1700	€ 100
Spanish	Spain & Argentina	EUROS	€ 1220	€ 1380	€ 1540	€ 1700	€ 100
Portuguese	Portugal	EUROS	€ 1220	€ 1380	€ 1540	€ 1700	€ 100
	Brazil	US DOLLARS	\$ 1250	\$ 1450	\$ 1650	\$ 1850	\$ 100
German	Germany & Austria	EUROS	€ 1220	€ 1380	€ 1540	€ 1700	€ 100
Romanian	Romania	STERLING	£ 800	£ 940	£ 1080	£ 1220	£ 80
Czech	The Czech Republic	STERLING	£ 850	£ 990	£ 1130	£ 1270	£ 80
Turkish	Turkey	STERLING	£ 900	£ 1000	£ 1100	£ 1200	£ 80
Arabic	Oman & Morocco	STERLING	£ 1000	£ 1100	£ 1200	£ 1300	£ 100
Norwegian	Norway	STERLING	£ 1600	£ 1800	£ 2000	£ 2200	£ 180
Swedish	Sweden	STERLING	£ 1600	£ 1800	£ 2000	£ 2200	£ 180
Chinese	China	STERLING	£ 960	£ 1100	£ 1240	£ 1380	£ 100
Japanese	Japan	STERLING	£ 1800	£ 2000	£ 2200	£ 2400	£ 180
Korean	South Korea	STERLING	£ 1400	£ 1600	£ 1800	£ 2000	£ 150
Russian	Russia & Ukraine	EUROS	€ 1100	€ 1280	€ 1460	€ 1640	€ 100

\* 17 hour-programme also possible in the US for \$1580

**Private Bathroom Option** With this option, students are guaranteed a private bathroom. Available worldwide. Weekly supplement is £140, €210 or \$210. Two students on this option share the supplement.

**Extra Days + Special Diet** Up to 2 days' additional accommodation can be arranged to allow for flight schedules, subject to availability (not normally available in July and August). A supplement of £35, € 40 or \$40 per week is charged for diets that require specific products, e.g. gluten-free, soya, halal, etc.

## Transfer Service

Fixed prices for the following destinations in the UK and Ireland. A fuel supplement may be applied in exceptional circumstances. For all other destinations transfers can be arranged with prices depending on the point of arrival and the location of the host teacher. Students may share the transfer with another student.

Point of arrival	Location of host teacher	Each way
London (Heathrow, Gatwick and City Airports and St. Pancras International)	London region	£80
	Kent or Sussex	£150
	Essex	£160
Stansted Airport	London region or Kent	£160
	Essex	£100
Channel ports, Ashford and Ebbsfleet International Stations	Kent	£80
	Essex	£150
Edinburgh Airport	Edinburgh region	£50
Dublin Airport	Dublin region	€80

## Course Options & Add-ons

### Hobby Plus

Available worldwide

£75, €100 or \$100 per week (3 activities)

With this option, students can enjoy their hobby whilst on their language homestay.

Hobbies can include:

- horse-riding
- tennis
- golf
- sailing
- swimming
- dance
- cookery
- flower arranging
- aromatherapy
- antiques
- art galleries
- painting
- country pubs
- British cream tea afternoon
- boot or antique fairs
- sporting or cultural events
- visiting castles / mansions

For certain activities (for example the British cream tea afternoon) the student is accompanied. For sporting activities such as tennis or golf a partner is arranged.

Students pay the hobby fee plus the activity or entrance fee where applicable for themselves and the accompanying person if required

### Garden of England Excursion Package - for juniors and adults

The package is available all year round in Kent, in south-east England.

- Dover or Leeds Castle and Canterbury Cathedral £160

Excursions are accompanied by the teacher and include transport and entrance fees for both student and teacher

- Tennis, golf, sailing, horse-riding or mountain-biking £100 per session

Sporting activities include fees and transport and will be with an English companion, not necessarily the teacher.

Other excursions and activities available upon request



## Course Options & Add-ons

All options available worldwide. Please add the supplement price to the Standard Course fee.

### City Experience

£200, €250 or \$250. Price per city experience (currency depending on destination)

- A full day visit to a city of interest accompanied by the teacher or an adult family member.
- This option includes transport costs to and from the chosen city. Students pay entrance fees for themselves and the accompanying person.

### City Plus Option - For students who are placed in a city location

£240, €300 or \$400 per week

The student has either three half-day trips, or one full day and one half day trip, accompanied by the teacher or an adult family member to visit a place of interest, theatre, concert etc. (student's choice) within the city. Transport costs for both student and teacher are included. Students pay entrance fees both for themselves and the accompanying person.

Students under the age of 18 going to London or other cities in the UK or USA must take the City Plus option.

### London – for adult students

Adult students may prefer to stay in London to enjoy independent sight-seeing in the city centre. Accompanied trips with the hosts can be arranged to:

- London galleries – free entrance
- Other attractions: e.g. Tower of London, Madame Tussauds, Buckingham Palace, Houses of Parliament
- Tickets to a football match

### Executive Plus - For business and professional people with specific needs related to their job

£150, €180 or \$180 per week

- Pre-course client appraisal
- Specific work-related language teaching
- Specialist course materials which the student keeps
- Detailed course report outlining covered topics and progress and Attendance Certificate

### Examination Preparation

£75, €80 or \$80 per week

- Preparation courses for the following English examinations: Cambridge Preliminary English Test (PET), Cambridge First Certificate in English (FCE), Cambridge Advanced English (CAE), Cambridge Proficiency in English (CPE), IELTS, TOEIC, Linguaskill. Preparation courses for non-English examinations available upon request.
- Examination preparation material provided

Exam preparation courses are possible in other languages e.g. DELF - Diploma in French Language Studies, and DELE - Diplomas of Spanish as a Foreign Language

Linguaskill assessment is an adaptive test, that covers the 4 skills - Reading and Listening combined, Writing, Speaking. Prepare for the Cambridge English test 'Linguaskill' with your host teacher. Choose Linguaskill General or Linguaskill Business. Take the test at the end of your stay, and receive your result within 3 working days from the Cambridge Assessment centre online. This is an excellent opportunity to acquire a qualification on a date of your choice.

## Students under 18

### 24/7 Supervision Supplement for students under the age of 18 of £100, €100 or \$100 per week

Students under the age of 18 must book this supplement unless they are taking the City Plus option, the Summer Special Course or are accompanied by an adult. This supplement provides 24/7 supervision and at least four accompanied cultural outings per week with transport included. In the UK and the USA students requesting a city location must book the City Plus option.

For all students under the age of 18, a parental consent form, included in the enrolment package, must be completed and sent to us in advance of any course.

Stays of 27 nights or over for students aged under 16 are considered to be a private fostering arrangement by UK authorities. There is a supplement of £200 for any such stays to cover the additional administration required.



**All students under 18 travelling alone must book the transfer service.** This is automatically applied to the booking unless it is stated at the time of the reservation that a parent or guardian will take the student to the host family. On departure all students under 18 are taken inside the departure lounge and shown the check-in queue. We charge a supplement of £15, €20 or \$20 for this service. All students under the age of 18 travelling alone must carry with them: passport and visa (if applicable), a letter of consent from a parent that they are allowed to travel alone, and airline, train or boat ticket.

**Unaccompanied Minor Service to/from the airport** - When a student is registered with the airline as an Unaccompanied Minor we charge a supplement of £60, €80 or \$80. On departure the driver will check the student in with the airline and then wait in the departure lounge for the flight to depart. This supplement covers all the extra parking and waiting. It is important to specify at the time of booking with ILH whether or not the student is registered with the airline.

All airlines have different policies regarding Unaccompanied Minors and different ages where they require this service. It is important to contact the airline directly regarding their policies. Please check the airline Terms & Conditions before booking tickets.

#### **Eurostar Trains**

Eurostar Trains do not allow children under 12 to travel alone. With regards to children aged 13-17, Eurostar should be contacted directly by the parents or the agent to arrange this.

## Summer Special Course in Southern England

A course of 15 hours per week for younger students aged 12 - 17 who wish to share the lessons and host teacher with one or two other students of a different nationality.

Available in southern England on the following dates:  
3 July - 17 July & 17 July - 31 July

£1700 for the 2-week package

There is a fixed two-way arrival and departure transfer fee of £225 (for London airports and Kent Eurostar Stations). Transfers will normally be shared. Unaccompanied Minor fees may apply, please see previous section for more details.

- This course is suitable for students at pre-intermediate to upper intermediate levels (A2 - B2). A pre-arrival test must be submitted at enrolment.
- Minimum of two accompanied outings per week to places of local interest.
- Students can expect around one hour's daily revision or project work, which is corrected the following day.
- If a student wishes to have additional weeks before or after their Summer Special Course he/she will be placed on the English on Sea programme (see page 36) for the additional weeks before or after the Summer Special course.
- If there is no partner for any part of the stay during the course dates the student receives 15 hours' one-to-one tuition per week at the same price. Please note that we cannot guarantee a partner student.
- Students are placed with other students of the same sex and accommodation is generally in twin rooms.
- Activities depend on the location of the teacher family.

## Choose ILH with confidence



The key benefits of an ILH course are:

An intensive immersion in an authentic environment which will enable you to make much more rapid progress than classes at home.

High quality one-to-one tuition in a comfortable home with a welcoming, friendly and knowledgeable host teacher, carefully selected to match your needs.

A great variety of locations across the world

Lessons tailored to your individual requirements and needs, so it's ideal for studying at your own pace.

A network of local organisers to ensure consistently high quality. Our local organisers' primary concern is your welfare and happiness during the stay. Their job is to identify the best possible teacher available for you, taking into account your:

- linguistic needs,
- preferred location,
- job or studies,
- interests and hobbies,
- age,
- any allergies and special dietary requirements\*.

The local organiser regularly visits teachers to make sure that they satisfy our quality standards for teaching and hosting. Your local organiser will contact you within the first few days to check that you are happy with all aspects of your stay, and they are on hand to deal with any emergencies that may arise or any questions you may have.

They pay particular attention when placing junior students and will only place with teachers who have been appropriately vetted.

Academic support every step of the way. Before your course you will be asked to complete a level assessment test and needs analysis to help the teacher tailor your course according to your level, needs and interests. Your teacher will complete a course record which you will be asked to sign to confirm that you have received the lessons and activities. At the end of the course, the teacher completes a student report detailing your progress and level which will be emailed to you along with a certificate of attendance. Your teacher will be able to draw on a variety of resources including:

- Unique ILH worksheets
- Authentic materials, such as newspaper articles, publicity materials, and extracts from TV and radio.
- Course books which help develop listening, speaking, reading and writing skills and online resources, such as company websites, YouTube videos etc.

After your course you will be asked to complete an end of course questionnaire which will give you the opportunity to tell us how your course went and which we will use to improve our courses in future.

You will be integrated into family life so you will learn a great deal more about the culture of the country than if you stayed in a residence or hotel.

The learning continues after lessons with speaking practice during the course of everyday activities, whether around the table at meal times, or out and about with the teacher. You will use your language skills in real life situations.

Engaging activities and trips. You will have a guaranteed minimum of three cultural or social activities every week to give you the opportunity to sample the cultural life and the main places of interest in the locality. It could be a tour of a place of historical interest, a visit to the seaside, country home or castle, or a sporting activity such as tennis or golf, depending on your interests.

You'll want to repeat the experience. Many of our students choose to do a repeat course in the following year with the same teacher, or choosing to go to a different location, or even to learn another language.

\* There is a supplement of £30, €40 or \$40 per week is charged for diets that require specific products, e.g. gluten-free, soya, halal, etc.





## English in Margate

WWW.ENGLISHINMARGATE.COM

### Our school and what we offer



We are a friendly English language school for adults in the popular seaside town of Margate in Kent, south east England. We offer high-quality English language courses designed for adults - whether they need English for work, examinations or recreational purposes.



#### 1 Our school

Our elegant historic school building is set in a Georgian square in the heart of Margate with a private walled courtyard.

#### 2 In Class

Our teachers are very experienced and passionate about teaching. They do their best to ensure you have a rewarding experience in the classroom. In addition, they have the support and back-up of a highly experienced and motivated academic team.

#### 3 Making Friends

Our Hawley Club Café offers a relaxed atmosphere in which students can make friends, chat, eat and have fun both during the day and in the evenings.

#### 4 Accommodation

Our friendly Homestay hosts are usually within walking distance of the school and all have wi-fi. Private bathrooms are available. You can also stay in one of our lovely fully furnished and serviced apartments or student houses near the school.

#### 5 Exploring Kent

Discover the county of Kent, also called the Garden of England, with its beautiful sites on our regular accompanied half-day and full-day trips.

#### 6 The Local Area

The Isle of Thanet, to which Margate, Broadstairs and Ramsgate belong, offers a wide range of shopping and leisure facilities including museums, art galleries, theatres, cinemas and sports centres. Combined with the beautiful beaches, countryside and historic sites, there is always something interesting to see or do.



## Courses

### General English Course (Standard/Intensive)

The aim of our courses is to effectively support, guide and motivate students, so that they can improve their level of English in all areas - speaking, reading, listening and writing as well as grammar, vocabulary and pronunciation. Afternoon courses offer a variety of options including business English and exam preparation.

### Combination and Personal English Courses

Students can combine a standard course with one-to-one lessons in the afternoons, focusing on their particular needs for work or can choose to have a Personal English Course with an all day one-to-one experience tailored to their specific requirements. Students can also enjoy several working lunches per week with their teacher.

### Exam Preparation Courses

We offer exam preparation courses for the following exams, IELTS, TOEIC, BULATS, Cambridge First Certificate and Cambridge Advanced English. The BULATS test can be taken in our school. All other exams can be taken locally.

### Executive Package

This package includes a combination course, lunches with a teacher, accompanied excursions, airport transfers and private bathroom in homestay or apartment accommodation.

### Erasmus+ Courses

We offer a range of courses for teachers in primary and secondary education, all of which can be funded by Erasmus+ grants.

### Mini Stays

Our mini stay courses are designed for 12-17 year old students who are looking to learn English. Students will experience 20 hours of English lessons a week, the opportunity to connect with new people, and an exciting social programme packed with unique excursions and day trips.

“ Located just 500m from Margate’s beautiful Golden Sands ”

- Location** Margate, UK
- Duration** Unlimited
- Language Levels** Beginners to advanced (A1- to C1)
- Maximum Class Size** 12 (average 8) students
- Lessons** from 20 - 40 lessons per week
- Course Dates** All Year
- Age** 12+

#### Parent and child

English in Margate is also suitable for a parent coming with a teenager who can study on one of our nearby junior programmes





“ Much more than just a language school - we offer a life experience ”

## In & Around Margate

[WWW.ENGLISHINMARGATE.COM](http://WWW.ENGLISHINMARGATE.COM)

### Come and study in Margate



Margate and its surrounding area in the beautiful south-east of England offers a wealth of famous sites, historic locations, interesting activities and golden sandy beaches. Make your learning experience one to remember.



- Beautiful seaside location less than 90 minutes from central London
- The perfect destination for mini-stay students, aged 12 - 17 years old, combining studying with action packed activities and trips!
- Independent school (not part of a chain) with hands-on management
- Experienced, friendly and approachable teachers and management providing a more personal experience
- Historic school building with lovely facilities and classrooms
- Wide range of academic, exam preparation, teacher development and vocational courses
- Internship / work and study programmes
- Multi media self-study centre open all day and on several evenings
- Atmospheric in-school café and club open during the day and on several evenings, where it is easy to socialise and make new friends
- High standard homestay and residential accommodation, usually within walking distance
- Excellent and varied social programme with weekly events
- Regular accompanied excursions to local places of interest in Kent and surrounding counties



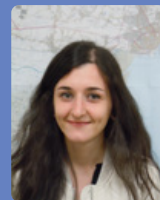
# Come and study in a beautiful coastal location...



...with fast transport links to London

PHOTO CREDIT: THANET TOURISM





**“ The atmosphere in the school was perfect; it is like being part of a little community ”**

**Chiara, Italy**

## What our students say:



“Many thanks for my learning experience! You have very good teachers who know how to adapt to their student, help and explain - it was very good for me! I feel I have made progress. And it is thanks to you! So, really, many thanks! See you soon.”

**Adrien, France**



“I have been here since March. Hard to believe that it’s already been 6 months. I feel like I am part of English in Margate and that I have a family here in Margate. I hope one day we will meet again. I love English in Margate.”

**Ecem, Turkey**



“Friendly teachers, very helpful, good learning atmosphere, good social atmosphere (Hawley Club). My host family was excellent! They were so friendly and helped me with all things. Excellent food, clean rooms and house. Many thanks.”

**Annett, Germany**



“The town, the school and the host family gave me a very warm welcome. I really enjoyed my stay, I liked people here, everybody was very friendly; school staff looks a really good team or even a family. It was a really wonderful experience for me. Thank you!”

**Zilvinas, Lithuania**







**“ You are the best ”**

Ewa, Poland



“I have been to the school 3 times and I love it. What is important for me is that the school also organises activities for the students in the local area. I wouldn't change anything about the school - everything is perfect!”

Mohammed, Saudi Arabia



“I feel I have improved my English a lot in this IELTS course with helpful, expert teachers and motivated students. I'm sure you will be more confident with your English after this course.”

Etsuko, Japan



“I loved living in this small town by the sea and my host family was delightful. Thank you for everything!”

Praewthong, Thailand



“I am very happy with my course in Margate. Everybody is very caring and I felt very comfortable. I lost the fear of speaking in English and this is the first step forward in my new life.”

Cristina, Spain





# English in Margate

WWW.ENGLISHINMARGATE.COM

## Key Facts

### School Information

Registration Fee: £55	High Season = 19 June - 28 August
The maximum class size is 12 students *	Low season = 1 January - 18 June & 29 August - 16 December
1 lesson = 45 minutes,	
20 lessons = 15 hours, 30 lessons = 22.5 hours	
Minimum Age:	Students under the age of 18 are requested to book either an Intensive Course or the Summer Vacation Option (when available).
16 for Beginner, Intensive General English and Exam Preparation courses	* 15 students for groups of under 18
18 for all other international courses	
Under 16 only for closed groups	

### Typical Timetable for our Standard & Intensive Courses

20 Lessons (Standard)	9:30 - 11:00 & 11:30 - 13:00 Monday - Thursday 9:00 - 10:30 & 11:00 - 12:30 Friday	
30 Lessons (Intensive)	9:30 - 11:00 & 11:30 - 13:00 Monday - Thursday 9:00 - 10:30 & 11:00 - 12:30 Friday	*14:15 - 15:45 Monday and Wednesday 14:15 - 16:45 Tuesday and Thursday
	Morning break: 30 minutes	Afternoon break: 15 minutes

\*From time to time we swap Wednesday and Thursday afternoon schedules so Wednesday pm is 3 lessons and Thursday pm is 2 lessons. We reserve the right to amend the timetable at any time but students can be assured that they will get the full number of lessons booked.

### Opening Hours:

We are open from 8:45am to 5:00pm Monday to Friday and from 7:45pm to 9:45pm two or three evenings per week, except on National Holidays. During opening hours, students are welcome to use all the school facilities, which include the self-study area, our student social club, café and the table tennis room. We reserve the right to amend opening times as and when necessary.

### Calendar 2022

EIM is open from Tuesday 4 January to Friday 16 December, but is closed on the following National Holidays: 15 and 18 April, 2 and 30 May, 29 August, and from 17 December 2022 to 2 January 2023. The first day back for students in 2023 is Tuesday 3 January.

On national holidays there are no classes. Students have the option of joining a teacher-led excursion (transport not included) instead of classes. Any missed individual classes are taught on another day. When the national holiday is on a Monday, students arriving have their induction on the Tuesday. However, the above does not apply to our Christmas Break (from 17 December to 2 January), where no trips are offered as the centre will be fully closed.

### First Day

On arrival, students receive a Welcome Pack as part of English in Margate's Induction programme. This contains comprehensive information about the school as well as relevant details about the local area, including transport and recreational facilities. During the induction, students are given both a written and oral test to determine their levels, followed by a tour of the school. After a mid-morning break, during which they have the chance to meet other students, they join classes at 11:30 (in summer this may be an introductory class).

In the afternoon, there is an orientation tour of Margate and an academic induction to our self-study facilities as well as a meeting to discuss the social programme in more details.

### Course Price includes:

Welcome Pack including Margate Map and tourist information	English in Margate photo identity card
Membership of the Hawley Club and free internet facilities	Attendance certificate and course report
In-house programme of Social Activities year-round	Access to our online learning platform "Let's Learn English" for the duration of your course

## Academic Support

One of the key features of our Academic team is the degree of hands-on support offered to students from the moment they arrive until their departure. This is an ongoing process of communication with all students, including feedback questionnaires at various points during their stay. Students are also welcome to express their opinions to their classroom teacher, particularly if they have concerns over their placement and class level. In addition, fortnightly tests and a system of 1-to-1 tutorials enable us to assess and monitor the progress of all students, ensuring appropriate classroom provision.

## Welfare

With academic progress being so closely linked to a student's personal circumstances, we have a strong system of pastoral care in place, based on care and confidentiality. During their stay, students can be sure of finding a sympathetic and helpful member of our Welfare Team who will offer the appropriate advice and guidance, with the individual's best interests in mind. Students under the age of 18 have a dedicated meeting on the first day to help make the most of their experience in Margate.

### Key Terms and Conditions (for full details please visit our website)

#### Enrolment

English in Margate and English in Canterbury (EiM) accepts all individual bookings on the understanding that the student is 16+ years of age and has an English level that we consider to be between elementary and advanced. We do not accept beginners or proficiency students on group courses. We reserve the right not to allow a student to start a course if they do not meet these criteria, or to place the student in a class with fewer lessons and a different syllabus, with no right of financial compensation, to better suit the needs of the student. English in Margate may alter or cancel the course programme, change teachers and location and alter dates from those stated in the brochure without prior notice.

Enrolments are accepted on the understanding that the student has no illness or infirmity which might adversely affect the success of the stay, and that any transmissible disease or pertinent medical condition suffered by the student must be declared at the time of booking.

For students under the age of 18 to be accepted, we will require additional documents signed by their parents or guardians: Consent to Travel and Medical Consent and Parental Consent.

All students must agree to the disclosure of their data to appropriate bodies such as the UK Visas and Immigration office or the British Council as required by the Data Protection Act.

EiM does not accept responsibility for any loss, damage or misadventure students may suffer in the family, the school or elsewhere, or if students miss classes due to circumstances beyond our control. Students are liable to pay for any damage they cause at their accommodation. Students are strongly advised to take out appropriate travel and medical insurance before travelling to England. We recommend using Guard Me. The policy may be booked online at guard.me.

EiM is insured with Public Liability Insurance. Students are advised that the school, its employees and its representatives accept no responsibility for personal injury and/or loss of/ damage to personal property on school premises. This condition also applies to public and private places when students are on school activities and/or excursions. The school will not be responsible for resolving any issues that arise from lack of insurance cover on the part of the student.

EiM reserves the right to use photographs taken in and out of class for promotional purposes. If a student objects to

this or her photo being taken, they should indicate this at the time of booking. These photos have no commercial or contractual value.

#### Enrolment confirmation and payment

Once a completed application form and deposit have been received and accepted, the student will be sent confirmation by email with an invoice for the balance due. Fees must be paid in full four weeks before the start of the course. The course and accommodation will be cancelled if payment is not received and the student does not contact us about this.

#### Cancellations and refunds

Full fees for all courses are payable and are non-refundable unless we receive a cancellation notice at least 28 days before the scheduled date of arrival, in which case the £200 deposit is forfeited. All cancellations must be notified in writing to the school and are only validated with written acknowledgement of receipt from the school. EiM cannot refund fees to students who start the course late, miss classes, choose to exchange their course for one of lesser value, or leave early for any reason. There is no refund for lessons lost due to public holidays. If the course is cancelled from 28 days to 7 days before the start of the course, 50% of the fees will be refunded; there would be no refund if a cancellation is made less than 7 days before the start of the course.

#### Accommodation and Holidays

We are happy to consider a request for a change of homestay but an administrative charge of £30 may be incurred at the school's discretion. For long-stay students we ask that at least two weeks' notice is given.

The school must be informed of any guests staying in self-catering accommodation. A supplement of £30 per night per person is charged for any guests staying overnight.

If the student is on a long course they should pre-book the number of weeks' holiday they wish to take before the start of the course. All students must notify the school of the specific dates of the holiday they wish to take at least two weeks in advance. Students who wish to book a holiday with less than one week's notice may do so at the school's discretion.

#### Visas

It is the student's responsibility to ensure that they have the correct visa type and appropriate leave to remain in the UK. If that is not the case, the course will be terminated and tuition fees forfeited. If a visa invitation letter has been issued and the visa application is refused, a refund minus any costs incurred would be made upon receipt of a copy of the visa refusal document.

If the student has booked through an agent, their terms of contract may apply to the student, but we reserve the right to apply our own terms.

# General English Courses

## English for Beginners

<b>Dates</b>	Any time of year excluding mid-June to the end of August	<b>Lessons per week</b>	20 lessons plus guided self-study
<b>Length</b>	6 weeks	<b>Price</b>	£420 per week
<b>Levels</b>	A1-	<b>Class Size</b>	Maximum 6 students

This course is aimed at students with little or no previous experience of English language learning and is designed to enable a smooth transition into an Elementary class. The main focus is on oral communication, although the four skills of reading, writing, listening and speaking are all covered, together with grammar, vocabulary and pronunciation.

## Standard Course

<b>Dates</b>	Start any Monday for any duration	<b>Lessons per week</b>	20
<b>Levels</b>	A2 to C1	<b>Price</b>	£240 per week £220 per week for 8 weeks+

The Standard Course, which students can join on any Monday, focuses primarily on the key skills of listening, speaking, reading and writing as well as grammar, vocabulary and pronunciation. Underlying this is an emphasis on the communicative approach in which we encourage students to develop conversational fluency. This course takes place every morning throughout the year and suits anyone wishing to have more free time in the afternoons to devote to private study or exploration of the local area. Please note students at B2 and C1 level may join FCE and CAE preparation classes instead.

## Intensive Course

<b>Dates</b>	Start any Monday for any duration	<b>Lessons per week</b>	30
<b>Levels</b>	A2 to C1	<b>Price</b>	£280 per week £260 per week for 8 weeks+
<b>Mornings</b>	General English		
<b>Afternoons</b>	Skills for Social Interaction, Travel & Work or Business English		

The Intensive Course consists of General English in the mornings (as specified for the Standard Course) and a choice of either 'Skills for Social Interactions, Travel & Work' or 'Business English'. This 'Lifeskills' or 'Business English' approach in the afternoons enables a varied course programme catering to particular needs and preferences. Please note that the 'Business English' option is available from a minimum number of 6 students and requires a minimum of B1 level.

## Intensive Course + Professional Training

**4 week Intensive Course + Professional Training** - available all year round (excluding July and August)

The 4 week package costs £1750\* and includes:

- Intensive course (30 lessons per week) with General English in the mornings and professional input in the afternoons
- Standard homestay accommodation – half-board during the week, full-board at weekend, free Wi-Fi
- 4 half-day weekly excursions and 2 full-day excursions
- 4 social evenings per week in our Club or in the local area
- 2 visits to local companies as part of the afternoon professional course (including hotel & catering, retail, insurance, engineering and IT)

**Levels** B1 upwards

\* Executive Homestay option with private bathroom and local area bus pass at £60 per week supplement

\* Additional weeks £450

This course is the perfect options for individuals who work or are about to enter the job market and would like to understand more about how a business operates. The lessons in the afternoons provide vocabulary related to professional areas and also work-related simulations with expressions typically used in professional contexts. The course is ideal if you use English as a lingua franca in your job.



# English for Specific Purposes and Personal English Courses

## English for Specific Purposes (ESP)

Professional Fields Available:

Aviation, law, engineering, tourism & catering, oil & gas, banking, nursing, public speaking

<b>Dates</b>	Start any Monday for 1 - 2 weeks*	<b>Lessons per week</b>	20 Standard + 10 ESP
<b>Levels</b>	B1 upwards	<b>Price</b>	£500 per week
<b>Class Size</b>	Maximum 6 Students	* (Closed groups can be quoted for any length of stay and any tailored programme of study)	

These afternoon options enable course participants to build upon existing specialist knowledge, and to enhance and consolidate work-related performance. Language skills from different professional fields, focusing on vocabulary, expressions and pronunciation, are developed by means of scenarios, role-plays and case studies. Four distinct units of work are presented each week, enabling students to join at any time. The course can be taken in two stays of one week and can be added to a longer stay.

## Combination Course

<b>Dates</b>	Start any Monday for any duration	<b>Lessons per week</b>	20 in a group (Standard Course) + individual lessons (2-12)
<b>Levels</b>	A2 to C1	<b>Price</b>	£45 per lesson

Price to add to a Standard Course. Includes free 15-minute pre-arrival interview with our academic staff. This option combines the benefits of a morning Standard Course (20 lessons) with individual classes in the afternoons to meet your specific business, academic or general English language needs. You can choose between 4, 8 and 12 individual lessons per week.

## Executive Package

<b>Dates</b>	Start any Monday for any duration	<b>Lessons per week</b>	18 individual + 10 group (Low Season) 10 individual + 20 group (High Season)
<b>Levels</b>	A2 to C1	<b>Price</b>	£1300 per week

A friend or partner can accompany the student and share the same Homestay accommodation without lessons for £250 per week (this includes a local area bus pass) or have Self-Catering accommodation without lessons for £84 per week.

### Package includes:

- 15-minute pre-arrival interview
- Standard course in mornings (20 lessons per week) and 10 individual lessons per week in the afternoons
- 4 restaurant lunches per week
- Executive homestay or self-catering apartment with private bathroom and wi-fi
- Half-day trip on Friday each week (transport included)
- Local area bus pass
- Arrival and departure transfers (Includes Gatwick/Heathrow/Stansted/City/Ashford/Ebbsfleet/Port of Dover/ Folkestone)
- Registration fee and accommodation placement fee

## Personal English Course

<b>Dates</b>	Start any Monday for any duration (Low Season only)		
<b>Price per week</b>	20 Lessons 30 Lessons	£800 £1100	<b>Levels</b> A1- to C2

Includes free 30-minute pre-arrival interview. This option provides you with your personal teaching team who designs the course programme around your specific language requirements. All group courses can be taken as a one-to-one option.

## Exam Preparation Courses



For students taking exams, there is an exam supplement of £245 (except Linguaskill). This one-off supplement covers the cost of the examination fee, course book, internal mock exam and transport to and from the test centre (local test centre if available).

### IELTS Courses (all year round)

<b>Levels:</b>	CEFR B1 to C1
<b>Course Length:</b>	4 to 6 weeks
<b>Lessons per week:</b>	10 lessons per week in addition to 20 lessons General English at the appropriate level

The IELTS (International English Language Testing System) is the required examination for entrance into UK, Australian and New Zealand institutes of higher education, and is increasingly becoming one of the most important English exams for adult learners. The aims of the course are to familiarise you with the specific format of the examination and to develop appropriate strategies and skills. Please note, students who are not taking the exam can join the preparation course, provided they meet the entry level requirements.

### Cambridge FCE & CAE Courses

<b>FCE Levels:</b>	CEFR B1 to C1	<b>CAE Levels:</b>	CEFR B2 to C1
<b>Course Length:</b>	4 to 6 weeks		
<b>Lessons per week:</b>	10 lessons per week in addition to 20 lessons General English at the appropriate level		

FCE and CAE are suitable for people who need English for professional or study purposes. The exams require knowledge of all the language skills and the ability to use everyday written and spoken English at B2 level and above. The aim of the course is to familiarise students with the specific format of the examination and to develop appropriate strategies for the skills involved. Students not taking the exam can join the preparation course, provided they meet the entry level requirements.

The above exam preparation courses can be added to a General English Standard Course for a supplement of £75 per week.

### Linguaskill (Business Language Test)

<b>Dates</b>	Any time	<b>Price</b>	Reading & Listening Test:	£70
<b>Levels</b>	A2 to C1		Speaking Test:	£80
			Writing Test:	£80

Linguaskill is an online, multi-level test that offers a complete picture of a student's English abilities, with fast and accurate testing of all four language skills; reading, listening, writing and speaking. There are two options for the computer-based test: Linguaskill General and Linguaskill Business. The exam is recognised both for CPF funding for French students and as proof of candidate's current language level.

### PET, TOEFL, TOEIC, CPE, BEC and KET

All the above exams, except CPE, may be taken on a Combination Course or as a Personal English Course in the afternoon. CPE may be taken as a Personal English Course. The TOEIC test is currently unavailable in the UK.

# Teacher Development Courses

## TD1 EFL Methodology for Teachers of English as a Foreign Language

<b>Dates</b> upon request	<b>Lessons per week</b> 24
<b>Levels</b> B2 upwards	<b>Price</b> 1 week €680 2 weeks €1360
<b>Accommodation</b> Homestay with single room, half board during the week and full board at the weekend: €220 per week	

This Structured Training Course is recommended for non-/near-native teachers working with students aged 10+. It may also be of interest to teachers of other languages or CLIL, due to the extensive focus on methodology.

## TD2 Language and EFL Methodology

<b>Dates</b> Start any Monday	<b>Lessons per week</b> 20 English language training + 10 Teacher development
<b>Levels</b> B1 upwards	<b>Price</b> 1 week €650 2 weeks €1300
<b>Accommodation</b> Homestay with single room, half board during the week and full board at the weekend: €220 per week	

The English Language and Methodology Course is aimed at teachers working with students age 10+. Teachers can take courses for 1 or 2 weeks. This course combines sessions focussing on professional development with English language training.

## TD3 Language & Practical Methodology -School Attachments ("Bi-Component")

<b>Dates</b> Start any Monday for 1 - 2 weeks Preparatory course + up to 7 weeks School Attachment	<b>Lessons per week</b> 30 (including preparatory tutorial)
<b>Levels</b> B1 upwards	<b>Price</b> 1 week + 1 week €1200 1 week + 2 weeks €1460 2 weeks + 1 week €1880 2 weeks + 2 weeks €2000
<b>Accommodation</b> Homestay with single room, half board during the week and full board at the weekend: €220 per week	

This course was the result of a 2007 Comenius initiative funded by the UK Department for Education & Skills and the European Commission involving the British Council, Tours Langues France, and Shadows Professional Development and of outcomes from the Polish National Agency Comenius conference in Sopot in October 2011. The 2007 Teachers Project was a two-week programme aiming for gains in new teaching strategies, skills and activities, methodological approaches and resources and increases in confidence in, and use of, the target language.

## TD4 Intensive General English improving the English skills of the participants

<b>Dates</b> Start any Monday	<b>Lessons per week</b> 30
<b>Levels</b> A2 upwards	<b>Price</b> €450 per week for 1-2 week courses €425 per week from week 3 onwards (includes one half-day cultural visit per week, one full-day cultural visit every two weeks and one working lunch per week, excludes entrance fees, excludes accommodation)
<b>Accommodation</b> Homestay with single room, half board during the week and full board at the weekend: €220 per week	

The Intensive English Language Improvement Course is aimed at teachers working with students aged 10+ who want to improve their overall English language level. Four weeks prior to the course you will be asked to complete a needs analysis and a telephone interview will be arranged. You will need a minimum language level of A2 to qualify for participation. The course content will be adapted to suit the specific needs of participating professionals. Upon completion of the course you will receive an attendance certificate.

## TD-5 Language, Civilisation and Culture (Erasmus+ scheme)

<b>Dates</b> Start any Monday between March and September	<b>Lessons per week</b> 30 (inc. visits and activities)
<b>Levels</b> English A2 upwards	<b>Price</b> 1 week €750 2 weeks €1500
<b>Accommodation</b> Homestay with single room, half board during the week and full board at the weekend: €220 per week	

The Language, Civilisation and Culture course is aimed at primary and secondary teachers wanting to enhance their communicative skills, classroom English usage and improve personal English skills for teaching. Participants will be seeking inspiration for thematic/ CLIL teaching in the primary or secondary school environment.

## 40+ Course



Our bespoke 40+ course is designed specifically for mature students wishing to study with people of a similar age from across the globe. The course combines confidence building lessons with visits, activities and excursions in and around the beautiful Isle of Thanet.

### What our course promises

- Guided tours of Kent's beautiful and historic towns, villages and castles.
- Tailored lessons that focus on building students' confidence in the English language.
- Mixed classes with students from all over the world of a similar age.
- The chance to explore England's culture and heritage in a beautiful location, with the sea on your doorstep.

Classes will consist of 20 lessons (15 hours) per week, where you will be given the chance to study with students of a similar age to yourself on our exclusive 40+ course. You will also join our exciting, and tailor made, 40+ social programme that gives you the chance to immerse yourself in all of the amazing social, cultural and sporting activities that Thanet, and Kent, have to offer.

### Dates and Fees

<b>Dates</b>		<b>Lessons per week</b>	20
28 March - 8 April	9 - 20 May	<b>Price</b>	£850 for 2 weeks
6 June - 17 June	12 September - 23 September		
<b>Levels</b>	B1 upwards		

### Key information

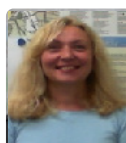
- Level test to see what English level you are at
- Morning classes followed by afternoon activities
- 1 full day excursion and 3 half day excursions per week
- FREE access to our exclusive Hawley Club, with snacks served daily
- All course material and access to our online portal
- End of course certificate

### Testimonials from students (40+) who have taken our General English Course:



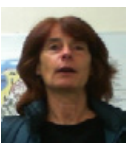
"I had a great time in the school! I enjoyed visiting Ramsgate and Canterbury and my favourite activity was the pub night. The staff were so friendly and kind. Thanks"

Terue, Japan



"Everything about my stay was very good and I had the chance to visit Broadstairs, Ramsgate and Oxford. I love Margate!"

Olga, Lithuania



"Thank you very much everybody for being open, helpful and very kind! I enjoyed my stay a lot and would like to come back next year"

Sabine, Germany



"My teachers were very good teachers and my private classes were excellent. I chose the school because it is by the sea and on the whole I love the school and Margate"

Kristi, Norway



"I chose this school because I was in other places in the UK and I think this is the best. Thanks to everyone because my stay has been fantastic"

Julian, Spain



## Sample 40+ Programme

Monday	Tuesday	Wednesday	Thursday	Friday	Saturday	Sunday
09.30 - 11.00					<p><b>Full day excursion</b></p> <p>Full day excursion to London, only 90 minutes on the train. Visit Oxford or Cambridge.</p> <p>Possible activities include:</p> <ul style="list-style-type: none"> <li>- Hop on hop off bus</li> <li>- Natural History Museum</li> <li>- Boat trip.</li> </ul>	<p><b>Free time</b></p> <p>Visit the local area and become acquainted with some of the fine restaurants Thanet has to offer.</p>
Welcome talk, meet your classmates and school and Margate orientation.	Lessons tailored to social programme.	Lessons tailored to social programme.	Lessons tailored to social programme.	Lessons tailored to social programme.		
<b>MORNING BREAK</b>						
11.30 - 13.00						
Lessons tailored to social programme.	Lessons tailored to social programme.	Lessons tailored to social programme.	Lessons tailored to social programme.	Lessons tailored to social programme.		
<b>LUNCH BREAK</b>						
14.15 - 15.45 Welcome tour of Margate - visit The Turner Contemporary Art Gallery.	Evening activities in our own Hawley Club.	14.15 - 15.45 Trip to Ramsgate Tunnels.	Free afternoon with optional evening activity, such as a visit to one of the local cinemas.	14.15 - 15.45 Trip to Broadstairs - visit Dickens House Museum and Bleak House.		



London hop on hop off bus



The Turner Contemporary Art Gallery



Dickens House Museum

## Summer Vacation option (to be combined with a Standard or Personal course)

<b>Dates</b>	13 June to 9 September	<b>What's included:</b> <ul style="list-style-type: none"> <li>Local area bus pass</li> <li>5 afternoon activities or excursions (Weekdays)</li> <li>1 full-day excursion on Saturday</li> <li>2 evening activities in our Social Club or in the local area</li> </ul>
<b>Duration</b>	Minimum 2 weeks	
<b>Price</b>	£120 per week	

London Gatwick airport return transfers £200 for Summer vacation' students. Please request at time of booking.

This option gives you the opportunity to explore the local area and learn more about Kent, the Garden of England, and its rich heritage and culture. Ideal for students who want to add a holiday feel to their English lessons.

\*Please note students under the age of 18 have to book an Intensive Course if this option is not chosen.

## English and Golf

<b>Dates</b>	Start any Monday – this option needs to be added to a morning course (Standard or Personal)*	<b>Price</b>	£450 per week* * in addition to the morning course
<b>Levels</b>	A2 to C1		

Included:

- 3 rounds of golf per week
- Playing partner provided
- Conversational English during rounds
- Transport to and from golf clubs

Not included: It is recommended that you bring your own set of golf clubs and a handicap certificate, otherwise clubs can be hired. Lessons or coaching can be arranged for an additional fee.

## Parent and Child

<b>Dates</b>	Start any Monday (not available in July and August)	<b>Lessons per week</b>	20 private lessons for the child 20 group lessons for the parent
<b>Levels</b>	A1 to C1		
<b>Price</b>	£1000 per week (Additional £100 per week for a second child sharing)		

Parents join the morning Standard Course whilst their child is having lessons. Outside lesson time parents and children are together. Both Standard and Executive homestay and self-catering residences are available. Afternoon accompanied excursions for both parent and child at £60 per afternoon (transport included).

For parents who would like their children aged 6 to 10 to have lessons at a nearby primary school for an integration programme this can be arranged for £250 per week. The parent can join morning only individual or group classes. Subject to availability.

## Working Lunch

<b>Levels</b>	A2 to C1	<b>Price</b>	£50 per lunch
---------------	----------	--------------	---------------

Price to add to any course. In the business world it is often as important to know how to use language in a social situation as it is in the office. We offer a bistro lunch with a teacher. Conversation can focus around general or business situations. You can add any number of working lunches to any course.

## Self Study Plus

<b>Price</b>	Included in the registration fee for a period of three months
--------------	---

Self Study Plus, licensed by "Let's Learn English" and incorporating the useful, interactive "Grammar Doctor", allows you to maximise your learning opportunities. The programme can be used on PC, laptop or any mobile device and in our self study centre. If you wish to continue using Self Study Plus after the first three months the cost is £25 for a 3-month period.

## Transfer Service

We offer taxi transfers from your point of arrival to your accommodation in Margate and for your return.

<p><b>Price each way</b></p> <p>London Airports: (Gatwick, Heathrow, City): £150          London Airport: (Stansted): £150          Channel Ports: (Dover, Folkestone): £85          Eurostar Stations: (Ashford, Ebbsfleet International): £85</p> <p>(Please note that transfers may be shared)</p> <p>Arrival transfer to London Gatwick Airport (South Terminal) at a fixed price of £75 every Sunday.</p> <p>(Meet at Costa Coffee opposite exit from baggage at 15:00. Students arriving at north terminal should take shuttle train to south terminal. Students should request this service at time of booking and confirm flight details at least 2 weeks before arrival. Offer applies to stays of four weeks or more.)</p>	<p>Special Offer <b>national express</b></p> <p>FREE coach to and from Margate.</p> <p>We will reimburse National Express return coach tickets to Margate. Available from Heathrow, Stansted, Gatwick and Luton airports. You will receive a cash refund on your first day of school. Offer is for students aged 18+ staying for four weeks or more and must be requested at time of booking.</p>
--	---

## Accommodation

Accommodation is generally within walking distance of the school and in the Margate area. If a student is not located in the Margate postcode area, a free weekly bus pass is provided. Accommodation is available throughout the year and comes with free wi-fi internet access.

### Homestay

**£170 per week in Low Season,  
£180 per week in High Season for stays of less than 6 weeks**

Students have a single room (unless 2 students booking together ask to share). Homestay is half-board during the week and full-board at weekends. During high season we reserve the right to place a student aged under 18 in a twin room with another student of the same gender and a similar age but different first language.

### Executive Homestay

**£250 per week**

This guarantees a higher-quality home and above-average size bedroom with private bathroom facilities. In addition, many of the rooms have televisions. A weekly bus pass, offering unlimited travel around the local area, is included. There may be another student of a different nationality in the home at the same time. Executive Homestay is half board during the week and full board at weekends.

A supplement of £30 per week is charged for diets that require specific products, e.g. gluten-free, soya, halal, etc.

### Additional Homestay Guests

Additional Homestay guests not requiring tuition, such as a partner or family member, are charged at £220 per week (or £300 per week for Executive Homestay) plus a registration fee of £50. They may use all school facilities during opening hours. Students and guests should leave the family home by 9am in the mornings on weekdays.

### Additional Night Homestay

Additional night homestay accommodation is usually available on request before or after your course. This is charged at £40 per night for Homestay and £50 per night for Executive Homestay.

There is a £45 accommodation placement fee on all homestay bookings.

## Early and Late Arrivals and Departures

A £25 supplement is charged for students arriving/departing from their accommodation before 6am or after 10pm.

Arrival in host family before 2 pm is subject to agreement by the host, please inform us at the time of booking if you are intending to arrive on an early flight or train.

## Holidays

If you wish to take a holiday during your course, the school cannot guarantee that you are able to leave your luggage with your homestay family. Arrangements must be made privately with the family.

## Christmas Holidays

If your course starts before and continues after our Christmas holiday, we can arrange for you to stay in a homestay family. However, there is a supplement of £120 per week over this period on a full-board basis.



## Social Programme

The social life you experience as a student at English in Margate is very important to us. Taking part in the additional activities that we provide, and recommend, while you study allows you to put into practice what you learn and take your English to a new level, while having fun and creating lasting friendships with your fellow classmates. Our unique social programme has something for everyone, whether you want to learn more about British history and culture, visit famous places of interest, or just relax with your friends.

### Typical afternoon local trips and activities

- Margate caves
- Shell Grotto
- Turner Contemporary Art Gallery
- Ramsgate Royal Harbour
- Bowling
- Crazy golf
- Local sports centre
- Coastal walks
- Beach games
- Westwood Cross shopping centre
- Sandwich (one of the best preserved medieval towns in England)
- Whitstable

English in Margate's very own social club - **Hawley Club** (located on the school premises) offers the perfect venue for students to socialise and make friends with one another.

Regular movie nights, table tennis, games nights and karaoke nights take place throughout the week offering students a unique and safe environment to put into practice their English.

**We can arrange a wide range of sporting activities locally: tennis, golf, trail biking, horse-riding, sailing, yoga, lion taming and swimming in Margate's historic tidal pool at Walpole Bay.**

**English in Margate offers students a FREE day return trip to London, by train, with a travel pass for the bus and tube.**

Also included is a ticket to one of the following:

- West End musical
- Premiership football match
- London Eye
- Tower of London
- Madame Tussauds
- London sightseeing bus
- Boat trip on the Thames

All subject to availability.

Other options may be considered.

Please note you will have a companion with you all day.

Offer is available for students aged 18+ staying for 8 weeks or more and must be requested at time of booking.

With this offer, students receive the free London trip for every 8 weeks of their stay. A student coming for 24 weeks would therefore have 3 free London trips..



**The Hawley Club**

**Excursion Package £25 per week (for stays of two weeks or more) when requested at time of booking**

Includes weekly half-day excursion and a full-day excursion every two weeks, all accompanied by a teacher. Please note the package only includes transport and the accompanying teacher.

### Sample Programme (see [www.englishinmargate.com](http://www.englishinmargate.com) for current programme)

MONDAY	Lessons followed by lunch	MARGATE - orientation tour followed by evening in Hawley Club
TUESDAY	Lessons followed by lunch	Cinema
WEDNESDAY	Lessons followed by lunch	BROADSTAIRS Dickens Museum
THURSDAY	Lessons followed by lunch	CANTERBURY - Cathedral
FRIDAY	Lessons followed by lunch	BIRCHINGTON - Quex Park Museum
SATURDAY		LONDON - River Thames boat trip
SUNDAY		Free time with host family/ Visit to local amusement park, Dreamland.

### Other costs to consider:

Bank charges

Travel and medical insurance

Course books are provided in class free of charge. The cover price of the book is charged if the student wishes to take the book home and is repaid upon return.

A weekly bus ticket with unlimited travel around the local area is available for £16 (subject to change by Stagecoach).

We recommend that students have a minimum of £100 per week to cover weekday lunches, our social programme including excursions (eg Canterbury, London) and general pocket money expenses during their stay.

## Under 18 students at English in Margate

The welfare and safety of junior students (that is, students under the age of 18) is of the outmost importance to us. We understand that everyone who comes into contact with children and vulnerable adults has a duty of care for their welfare, ensuring their safety at all times. Our junior students mix with the adult ones as much as possible; in the classroom and on daily activities in and outside the school. Junior students are not placed with adult students in homestay.

There are certain rules that junior students must observe. Students must be back in their homestay by 10:30pm. It is illegal for students under the age of 18 to purchase and consume alcohol, and to purchase cigarettes and tobacco. Parents (or legal guardians) must fill in a consent form at the time of booking to confirm they have understood the Terms and Conditions for enrolment for junior students.

Young learners under the age of 16 only come in supervised groups. They do not have lessons with our adult students and may follow a different lesson time-table, break-times and lunchtimes.

## Internship Programme

### English Plus Internship Programme\*

<b>Dates</b> Start any Monday for a minimum of 2 weeks Intensive English language course followed by a minimum of 4 weeks' internship	<b>Lessons per week</b> 30
<b>Levels</b> B1 upwards*	<b>Hours of work per week</b> Maximum 35
	<b>Price</b> £280 per week for the Intensive course £420 for the first 4 weeks' internship £75 per week for additional weeks

\*For students with a level lower than B1, a longer period within the school before the internship will be necessary in order to achieve a B1 level.

It is often easier to get the job you want if you have had experience working for an English-speaking company in the UK, in addition to having a good level of English. The combination of a language course and internship in a British company enhances language improvement and skills. Students learn on an intensive language course followed by an internship in a local company. Accommodation can be provided at an additional cost, please see page 29 for more details. Each candidate must have a minimum of an intermediate level of English: this will be assessed with a Skype or telephone interview. During the internship, the student receives continuing support from our Internship Manager. At the end of the placement, the student receives a certificate from the school and a report from the company.

### Examples of internships that can be offered

Teaching/ Activity Work in schools/playgroups (UK and national DBS Check required for an additional £80), Administration, Retail, Kitchen (trainee chef), Food Service, IT, Hairdressing, Plumbing, Electrical, Other skilled trades.

This internship scheme is also available to minigroups, where accommodation can be arranged for accompanying teachers/ group leaders.



#### Included:

- Bus pass ticket offering unlimited travel around the local area during the internship
- Entry to school Social Club evenings and evening and weekend events in the school throughout the stay
- Continuing support from the Internship Manager
- Certificate of attendance and report for the Intensive General English course
- Certificate for the Internship issued by English in Margate
- Internship Report issued by the company



#### Requirements:

- A minimum of an intermediate level of English (confirmed by telephone interview)
- Aged 18+
- Enthusiasm, flexibility and the desire to work hard (35-hour week)
- Insurance to cover both public & private liability while at work
- Students should be EU Citizens or from the EEA or have a Tier 5 Visa
- Following the UK's departure from the EU, our requirements are subject to change and should be verified before booking

\* Please note that the Intensive English Language Course is the only part of the programme accredited by the British Council

## English at Your School

<b>Dates</b>	all year round	<b>Number of lessons</b>	up to 5h per day
<b>Levels</b>	A2 (elementary) and above	<b>Age</b>	any
<b>Location</b>	your school	<b>Type of course</b>	conversational classes
<b>Price</b>	upon request		

'English at Your School' gives you the opportunity to bring a part of England into your classroom. Your pupils will learn about English culture and tradition and have the opportunity to ask questions about life in England. Highly qualified teachers liaise with you regarding your pupils' needs and visit your school for a chosen length of time. Up to five hours of lessons per day with different age and language levels can be arranged.

Methodologies used:

- Communicative Approach
- Task-based Learning and Project Work
- Drama Techniques
- Total Physical Response

Topics that can be covered:

- British culture
- Functional language for travel, social and work contexts
- Poetry and drama
- Specific terminology for vocational courses and colleges

Why not combine this option with some teacher training for your staff?

## Teacher Training at Your School

<b>Dates</b>	all year round	<b>Number of lessons</b>	up to 3h per day
<b>Levels</b>	B1 (intermediate) and above	<b>Location</b>	your school
<b>Type of course</b>	TEFL Methodology and CLIL	<b>Price</b>	upon request

'Teacher Training at Your School' allows you to reap the benefits of attending up-to-date teacher training and development sessions in the comfort of your own school surroundings. Highly qualified and experienced Teacher Trainers who regularly attend international conferences, workshops and seminars liaise with you regarding your teachers' specific needs and visit your school for a chosen length of time during the week or at the weekend. Training sessions of up to three hours per day during the week or five hours per day at the weekend can be arranged.

Topics that can be covered:

- CLIL
- Using Technology in the classroom
- Teaching the 4 skills
- Teaching vocabulary
- Teaching grammar
- Learner training and fostering autonomous learning
- Professional Development for Teachers

"I have read a lot of positive comments about your trainers and the course "English Language and Methodology" was exactly what we were looking for"  
Monika, Secondary School Teacher, Czech Republic

## Integration Programme

<b>Duration</b>	from 4 weeks up to 1 Academic term	<b>Location</b>	Kent
<b>Levels</b>	B1 (intermediate) and above	<b>Price</b>	£575 per week
<b>Type of course</b>	full-integration in Secondary school		

This programme gives the option to join a secondary school for up to a full academic year. Students will be placed in homestay accommodation with one of our excellent families and have the opportunity to take part in all the lessons in a British secondary school.

"I loved it, because this is one of the best experiences of my life. It's incredible! I want to repeat another year"  
Alberto (14), Spain

Fees include Full Board homestay accommodation and a place at an English high school.

- Options:
- A local area bus ticket £25 per week
  - Full day excursion on Saturday eg London, Cambridge, Canterbury or castle £40
  - Airport Transfers – See Transfer Service on page 28

The school day is generally from 08:30 to 15:00. The student can be accompanied from the host family to the school and back. The student is assigned 'a buddy' from the English school and takes part in all the lessons e.g Maths, English, history, science etc. During half terms holidays students may stay in homestay. The same price would apply and the student would have 24/7 supervision and at least 3 cultural trips/activities per week.



## Ministays at English in Margate

Sample Programme for groups of 10+ students of all ages for stays of 1 to 3 weeks

Prices variable (students' age range, time of year, group size, number of leaders, add-ons and duration)

Prices based on closed groups of 10-14 per class

Minimum 10 students (12 years+) with 1 teacher/leader free per 10

Full board homestay in twin rooms (included packed lunch)

20 lessons (45 minutes each)

Full day trip to London and half day trip to Canterbury

Local activities in and around The Isle of Thanet

- Margate orientation tour
- Margate caves
- Shell Grotto
- Quex Park Museum
- Turner Contemporary Art Gallery
- Dreamland Fun Fair (wrist band fee applies)
- Broadstairs (Dickens Museum)
- Ramsgate (Royal Harbour and war tunnels)
- Bowling
- Crazy golf
- Sports centre
- Coastal walks
- Beach games
- Westwood Cross shopping centre
- Sandwich
- Whitstable

2 evening activities in the school

eg. Karaoke, table tennis, pool table, table football, films, board games, quizzes

Children under 16 years are brought to and picked up from school each day and for evening activities

Arrival and departure transfers (Gatwick or Stansted)

Supplements:

- River Thames boat trip from Greenwich to Westminster
- Heathrow, Luton, Southend or City airport - 2-way transfers
- Weekly bus ticket for the local area
- Extra half day trip to Dover Castle (entrance fee included)
- Extra full day trips to London, Oxford, Cambridge, Brighton
- Extra night
- Extra leader
- Extra evening activity
- Restaurant hot lunch
- Multi-risk+ cancellation policy insurance per student, including cover for leaders (6 nights = 7 days)
- Supplement for diets that require specific products (eg. soya, gluten free, halal, coeliac, vegan, lactose and nut allergies)
- Group day travel card around London for travel on bus, Tube, tram, DLR, LondonOverground, TFL Rail and most National Rail services

# The Isle of Thanet

With 20 miles of beautiful coastline, abundance of cultural places to visit, and steeped in history, Thanet is one of the loveliest locations to learn about England and its language. With its glorious sandy beaches, pretty harbours and quaint villages that boast Georgian and Victorian architecture, there is a wealth of opportunity for visitors of all ages to this area.



## Margate

Margate is an increasingly vibrant and popular seaside town with a magnificent beach. It also boasts the modern art gallery, the Turner Contemporary, and the newly refurbished Dreamland amusement park. With its individual antique shops and vibrant café-culture, together with a direct fast train to London, Margate offers something for everyone.



## Broadstairs

Once the favourite holiday spot of renowned author Charles Dickens, Broadstairs is a truly charming coastal town situated between Ramsgate and Margate. Viking Bay is delightful for family beach holidays, ice-cream is a must, and the photo opportunities are a delight.



## Ramsgate

Ramsgate is rightly proud of its magnificent Royal Harbour, full of all manner of sailing craft. It is also home to the Ramsgate Tunnels. Visit the restaurant at the Royal Victoria Pavilion, where you can enjoy traditional British cooking whilst overlooking the beach and sea.



# Kent

Known as 'The Garden of England', and bordering Greater London, Kent is home to some of the most beautiful coastal towns, castles, tourist trails and visitor centres in all England.



## Canterbury

Canterbury is both a historic old city and a vibrant university city, with something for everyone. The magnificent cathedral, the pretty river and many shops and restaurants all help to make this attractive destination very special and a wonderful day out.

## Whitstable

Renowned for its famous Whitstable oysters, sweeping waterfront (ideal for walks and cycling), working harbour and charming castle, this is a very interesting town with a coastal location. The narrow streets are also a delight, with their individual delicatessens and little shops.



## Dover

Dover is another of the Kent coastal towns bursting with history and charm. The iconic White Cliffs of Dover provide a stunning view with glorious walking opportunities, whilst historic Dover Castle is an excellent visitor attraction. This is also a busy ferry port with plenty of hustle and bustle.





**ENGLISH**  
-ON-SEA.COM



**English On Sea**  
WWW.ENGLISH-ON-SEA.COM



“ Come and study in a beautiful coastal location ”



English on Sea is part of English in Margate specialising in mini-stay school groups for children aged from 10 upwards. They will enjoy learning English in a beautiful seaside location.

## 1 Lessons

Lessons take place in a beautiful historic building located in the centre of Margate. Lessons focus on building up students’ confidence in speaking using a variety of teaching techniques linking the cultural activities to our tailored made syllabus.

## 2 Activities

Our courses are combined with cultural programmes that include visits to local historic places of interest, museums, castles and workshops. Our activity leaders are fully trained and the safety and well-being of our students is always a priority.



## 3 Location

Margate is one of three main towns with Broadstairs and Ramsgate, that forms The Isle of Thanet. Margate is the place to study and play; ride a vintage roller coaster, build sand castles or walk, run or ride around the cliff tops and promenade of the Viking Coastal trail. For swimming enthusiasts, Margate offers the biggest tidal pool in the UK.

## 4 Accommodation

With home-stay, students become a part of a friendly local home and are encouraged to speak English as much as possible. Our home-stay hosts are carefully selected and checked for safety and for their understanding of international students, and fully comply to British Council accreditation criteria. Residential accommodation is also available.



Accredited by the  
**BRITISH COUNCIL**  
for the teaching  
of English in the UK



**We can propose a package that can include the following:**

- Airport Transfers
- Full Board Home-stay or residential accommodation
- Lovely self-catering house available next to the school for accompanying adults
- 20+ lessons per week (courses can be arranged for accompanying adults)
- Full afternoon activity programme
- Optional evening activities in our student club – karaoke, games, pool, table tennis. Cinema and bowling available locally
- Host families drop off and pick up students for school and evening activities
- Half days trip options: Broadstairs, Ramsgate, Sandwich, Dover Castle, Canterbury, Whitstable, Westwood Cross shopping centre
- Local museums; Margate caves, Shell Grotto, Turner Contemporary Art Gallery, Quex Park and Museum, Dickens Museum, Ramsgate Tunnels
- Full day trips options: London, Oxford, Cambridge, and Brighton
- Local area bus pass and hot lunches during the week, available on request

**Sample Programme**

MONDAY	Lessons followed by lunch	MARGATE - Walking tour followed by crazy golf
TUESDAY	Lessons followed by lunch	DOVER CASTLE - And famous White Cliffs
WEDNESDAY	Lessons followed by lunch	BROADSTAIRS - Including Dickens Museum
THURSDAY	Lessons followed by lunch	CANTERBURY - Including Cathedral
FRIDAY	Lessons followed by lunch	SANDWICH - Best preserved medieval town in England
SATURDAY	London (hop-on hop-off bus and boat trip)	
SUNDAY	Departure from Margate	

**Noureddine from Morocco**

“The lessons are interesting and my students are very satisfied with the quality. The host families are very nice and have done a marvellous job. All the activities and excursions seem very interesting and good for our students to discover England and its most interesting landmarks. Everything is well organised”

**Laura from France**

“They are happy. Lessons are interesting and interactive. They are not far away from the school. The organisation is perfect and the programme has been changed with extraordinary flexibility. Hannah and Elena were very nice and always found the best solution for any issues. Thank you to all!”

**Maria and Alessandro from Italy**

“Students seem to be happy with the lessons. We didn’t have any problem about the accommodation, because the host families took care properly of all the students. General organisation was very good. students told us that everything was good and that it reflected their expectations”

**Maria from Spain**

“The teachers and the staff have treated us really well, being friendly and helpful. We are really looking forward to coming back next year, thanks so much!”







## Home Group6

WWW.HOMEGROUP6.COM



“ A unique language course for young learners ”



Home Group 6 is a fresh and unique way to learn English. Study in a small group (maximum 6 students) in the relaxed environment of your teacher's home and make friends with your new classmates. Students really enjoy the friendly family atmosphere of the 'home classroom'. After the morning lessons students take part in afternoon trips to local places of interest with their activity organizer.



### 1 Lessons

There is plenty of interaction in a relaxed and friendly environment. Your experienced teacher ensures you are fully involved in the lessons, helping you to become more confident and fluent.

### 3 Activities

A full leisure and cultural sports programme in the afternoons and on Saturdays that includes trips to London and historic Canterbury with its famous cathedral. All entrance fees and transport costs are included.

### 2 Location

Whitstable is a pretty, traditional seaside town in Kent, famous for its bustling high street with boutique shops, its maritime heritage, working harbour and fishmarket with fresh sea food and oysters. The town also has a lovely pebble beach and promenade, a magnificent castle and gardens, swimming pool and bowling.



### 4 Accommodation

Students stay with a friendly local host family in the Whitstable area. All meals are provided.







# Home Group6

WWW.HOMEGROUP6.COM

<b>Dates</b> 4 July - 18 July 18 July - 1 August 1 August - 15 August	(Any time of year for groups)	<b>Lessons per week</b>	20 (15 hours)
<b>Age</b>	14-16 years	<b>Location</b>	Whitstable, Kent
<b>Levels</b>	Pre-intermediate to upper intermediate (A2 - B2). A pre-arrival test must be submitted at enrolment.		
<b>Price</b>	£1700 for 14 nights		

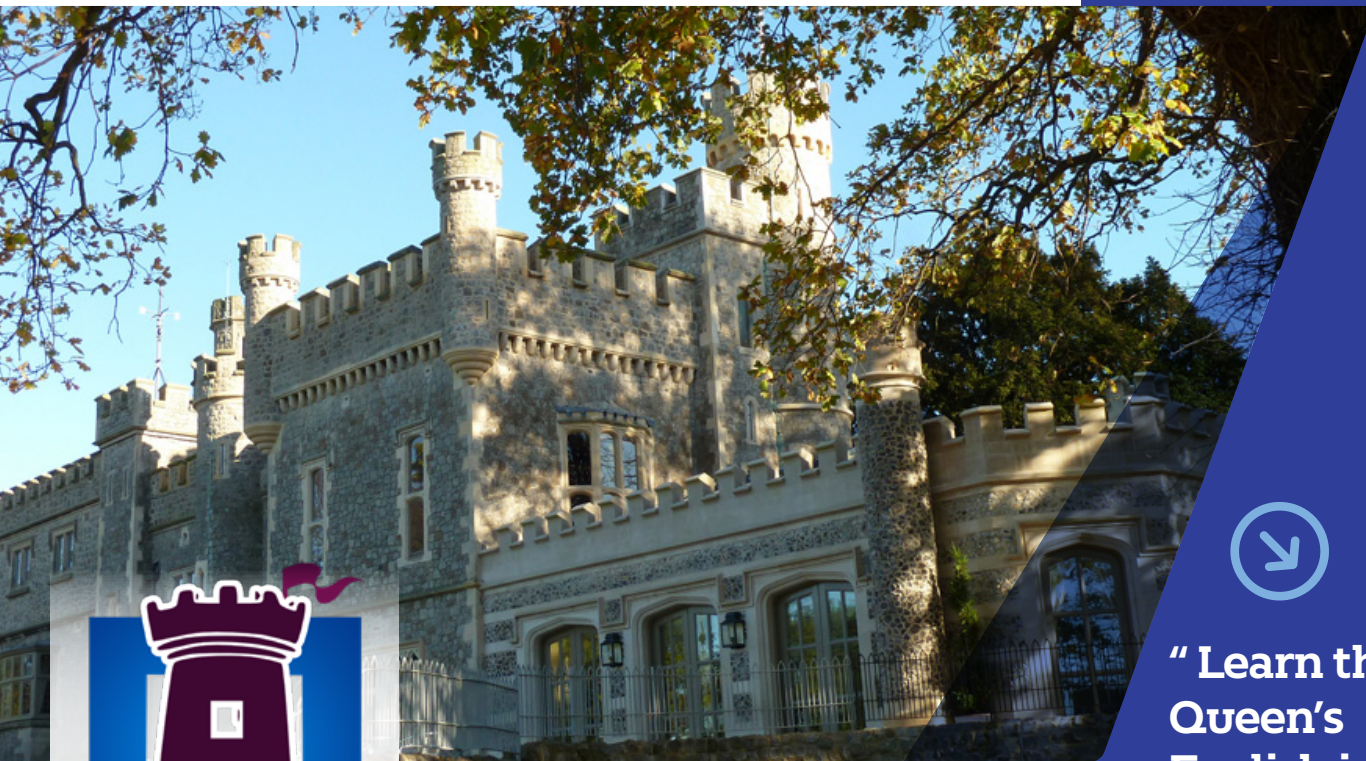
### The package price for this course includes:

- Transfer on arrival and departure (London airports, Kent ports and Eurostar stations)
- Full board homestay accommodation. Students are placed with other students of the same sex (different nationality) and accommodation is generally in twin rooms
- 20 lessons per week in the home of the teacher
- Approximately one hour's daily self-study in the family (revision or project work)
- Culture and leisure activity programme every weekday afternoon
- All transport provided
- 2 full-day trips
- End-of-course Certificate of Achievement

Maximum of six students, and no more than two students of the same nationality, in each teaching group.

### Sample Programme

	Morning	Afternoon
SUNDAY	Arrival	
MONDAY	Lessons followed by lunch	WHITSTABLE - Orientation Tour and Harbour Visit
TUESDAY	Lessons followed by lunch	FAVERSHAM - Heritage Centre & Swimming (outdoor pool)
WEDNESDAY	Lessons followed by lunch	WHITSTABLE - Beach and Bowling
THURSDAY	Lessons followed by lunch	CANTERBURY - Cathedral and Walking Tour
FRIDAY	Lessons followed by lunch	MARGATE - Dreamland amusement park
SATURDAY	Full-day trip to London (sightseeing, museums & shopping)	
SUNDAY	Free time with the homestay Host	
MONDAY	Lessons followed by lunch	BIRCHINGTON-ON-SEA - Quex Park Museum
TUESDAY	Lessons followed by lunch	CANTERBURY - River Boat Trip & Gardens
WEDNESDAY	Lessons followed by lunch	BROADSTAIRS - Mini Golf and an Ice-Cream
THURSDAY	Lessons followed by lunch	CANTERBURY - Beaney Museum and Shopping
FRIDAY	Lessons followed by lunch	WHITSTABLE - Scavenger Hunt & Goodbye Tea Party
SATURDAY	Full-day trip to Cambridge (sightseeing, museums & shopping).	
SUNDAY	Departure	



## English in a Castle

[WWW.ENGLISHINACASTLE.COM](http://WWW.ENGLISHINACASTLE.COM)



“ Learn the Queen’s English in a magnificent castle ”



The Castle provides a truly exceptional location in which to study. Students enjoy both the heritage and beautiful castle gardens and the picturesque seaside town of Whitstable provides plenty of opportunities for an interesting cultural programme.



### 1 Lessons

Kent’s rich cultural heritage forms the basis of this course with project work focused on the region and its historic origins. Key features include team-building, assignments and presentations.

### 3 Activities

The cultural programme adds to the course with related visits to local historic places of interest, museums, castles and optional dance, drama and art workshops. In addition there is a day trip to London. All entrance fees and transport costs are included.

### 2 Location

Whitstable is a pretty, traditional seaside town in Kent, famous for its bustling high street with boutique shops, its maritime heritage, working harbour and fishmarket with fresh sea food and oysters. The town also has a lovely pebble beach and promenade, a magnificent castle and gardens, swimming pool and bowling.



### 4 Accommodation

Students stay with a friendly local host family in the Whitstable area. All meals are provided.





# English in a Castle

WWW.ENGLISHINACASTLE.COM

## Type of programme: International courses

<b>Dates</b>	4 July to 1 August, minimum stay 2 weeks Arrival and departures on Sundays	<b>Lessons per week</b>	20
<b>Age</b>	12-16	<b>Location</b>	Whitstable, Kent
<b>Levels</b>	A2-B2	<b>Price</b>	£1580 for 2 weeks £750 additional weeks

## Type of programme: Groups

<b>Dates</b>	all year round	<b>Location</b>	Whitstable, Kent
<b>Age</b>	10+	<b>Price</b>	£540 for the first week £500 additional weeks
<b>Levels</b>	A2-C1	Free leader for every 12 students. Additional leader £250 per week.	
<b>Lessons per week</b>	20-26		

## The package price for the International Course (age 12-15) and groups includes:

- Transfer on arrival and departure (London airports, Kent ports and Eurostar stations)
- Full board homestay accommodation (students are placed in pairs)
- Study at Whitstable Castle set in beautiful grounds
- Integrated language skills with a focus on local heritage and culture
- Approximately one hour's daily self-study in the family (revision or project work)
- Excursions and activities on three afternoons
- Optional workshops in dance, drama and art
- Weekly full-day trip
- End-of-course Certificate of Achievement

## Sample Programme (Arrival and departure on Sunday)

	Morning	Afternoon
MONDAY	Lessons followed by lunch	WHITSTABLE - Orientation Tour and Harbour Visit
TUESDAY	Lessons followed by lunch	CANTERBURY - Cathedral and Walking Tour
WEDNESDAY	Lessons followed by lunch	BIRCHINGTON - Quex Park Museum
THURSDAY	Lessons followed by lunch	CANTERBURY - Wildwood Nature Sanctuary
FRIDAY	Lessons followed by lunch	MARGATE - Dreamland amusement park
SATURDAY	Full-day trip to London (sightseeing, museums & shopping)	
SUNDAY	Free time with the homestay Host	
MONDAY	Lessons followed by lunch	DOVER CASTLE
TUESDAY	Lessons followed by lunch	BROADSTAIRS - Dickens Museum
WEDNESDAY	Lessons followed by lunch	WHITSTABLE - Laser Quest
THURSDAY	Lessons followed by lunch	CANTERBURY - River Tour & Shopping
FRIDAY	Lessons followed by lunch	WHITSTABLE - Goodbye Picnic Party
SATURDAY	Full-day trip to Cambridge (sightseeing, museums & shopping)	

## Type of programme: Parent & Child

<b>Dates</b>	4 July to 1 August, min stay 1 week	<b>Location</b>	Whitstable, Kent
<b>Age</b>	8+	<b>Price</b>	£300 for the first week, £260 additional weeks,
<b>Levels</b>	A2-B2	Includes lessons, plus three weekly afternoon activities (Tuesday to Thursday); discover Whitstable, Canterbury and Margate (parent/s may accompany their child for a supplement of £30 per afternoon. Includes transport and any entrance fees). Optional full-day Saturday excursion: £40 per child/adult.	
<b>Lessons</b>	20 per week		
<b>Accommodation</b>	Homestay half board in the same family, £200 per person per week. Private bathroom supplement £90 per week		





“ English on location in Kent, the Garden of England ”



**Junior Residence**

[WWW.JUNIOR-RESIDENCE.COM](http://WWW.JUNIOR-RESIDENCE.COM)



South East England is one of the most beautiful areas of England and offers easy access to London and continental Europe. Residential courses are available for Closed Groups all year round, and International courses in summer, in Kent, the Garden of England.

### 1 Lessons

The course is designed with young learners in mind. Lessons are largely activity/project based with an emphasis on having fun while learning. Teachers are chosen for their friendliness and experience with younger students.

### 3 Location

All year round closed group courses are run on the Isle of Thanet in east Kent, with its fine sea views and sandy beaches, and only 15 miles from the world heritage city of Canterbury.

### 2 Activities

There is a full leisure programme including sporting activities, museum and castle visits, day trips to local towns and London.

### 4 Accommodation

Our location offers the perfect combination of bright, modern, purpose built residences on the site of traditional old-style English boarding school establishments. Courses are supervised by our own centre manager and dedicated activity staff. Most of the accommodation is in single rooms with shared bathrooms. All meals are provided.





# Junior Residence

WWW.JUNIOR-RESIDENCE.COM

<b>Dates</b>	Any time of year for closed groups	<b>Lessons per week</b>	20 (15 hours)
<b>Age</b>	8 - 17	<b>Location</b>	Kent
<b>Levels</b>	All levels	<b>Price</b>	£900 per week (based on the package below)

**Group package price based on 24 students plus 2 leaders free of charge, (extra leader £350 per week) includes:**

- Transfer on arrival and departure (London airports, Kent ports and Eurostar stations)
- Full board residential accommodation
- 20 lessons per week including a drama workshop
- Culture and leisure activity programme
- Full-day trip (e.g. London, Oxford, Cambridge)
- End-of-course Certificate of Achievement and Course Report

Lessons can be provided for accompanying group leaders.

## Sample Programme

	Morning	Lunch	Afternoon	Dinner	Evening
SUNDAY	ARRIVAL				
MONDAY	Lessons	Lunch	Drama workshop with professional actor	Dinner	Arts & Crafts
TUESDAY	Lessons	Lunch	Quex Park (Museum, Pottery workshop & Gardens)	Dinner	Film
WEDNESDAY	Lessons	Lunch	CANTERBURY - Cathedral and Walking Tour	Dinner	Bingo & Games
THURSDAY	Lessons	Lunch	BROADSTAIRS - Dickens Museum & Crazy Golf	Dinner	Talent Show
FRIDAY	Lessons	Lunch	MARGATE - Seaside, Beach & Art Gallery	Dinner	Quiz
SATURDAY	Full-day trip to London (sightseeing, museums & shopping)			Dinner	Film
SUNDAY	DEPARTURE				







## Train to Teach English

WWW.TRAINTOTEACHENGLISH.COM



“ Become a qualified teacher of English as a foreign language”

### Become a Qualified English Teacher



We offer the Trinity Cert TESOL Teacher Training course at our school, with built-in classroom observations and teaching practice.



### Cert TESOL Course - Trinity College, London

We are accredited by Trinity College London to provide this excellent internationally recognised qualification. TESOL stands for 'Teaching English to Speakers of Other Languages'. This is an intensive course aimed at those with little or no teaching experience and will equip those candidates with the basic skills and knowledge needed to teach English as a second language. The course is QCF Level 5, comparable in difficulty to the second year of an undergraduate degree.

No teaching experience is required - this course is open to anyone with the qualifications for entry to higher education, such as A-levels. The certificate awarded is suitable for a gap-year student looking to travel and teach English abroad, for those looking for a career change or for someone within the profession aiming to improve their standard.

“ I would definitely recommend the course to anyone looking to try something new and interesting. It was great to achieve something positive that will have a real impact on people's lives. ” Jack

“ The tutors were experienced and offered a variety of advice, techniques and feedback. They offered excellent support when needed. The atmosphere in the language school is great. ” Tracey

**TRINITY**  
COLLEGE LONDON  
Validated Course Provider 47804





# Train to Teach English

WWW.TRAINTOTEACHENGLISH.COM

## Cert TESOL Course accredited by Trinity College, London

<b>Dates</b>	Any time of year (excluding periods where there is a national holiday)	<b>Course</b>	4-week duration, 130 hours
<b>Age</b>	18+	<b>Location</b>	Margate, UK
<b>Levels</b>	Advanced / C1 upwards	<b>Price</b>	£1250 (incl £165 Moderation Fee) £55 registration fee
<b>Maximum Group Size</b>	Closed groups only of 6-12 students		

Train to Teach English as a Foreign Language at English in Margate and gain the TRINITY Cert TESOL.

### What is Cert TESOL?

The Certificate in Teaching English to Speakers of Other Languages, awarded by Trinity College, London, is accredited at level 5 of the National Qualifications Framework.

The course runs for 4 consecutive 4 weeks Monday to Friday 09:00 to 17:00 and includes a minimum of:

- 130 hours of guided learning
- 6 hours of teaching practice
- 4 hours of observation

6 hours of observed teaching practice, with groups and individual observations of experienced teachers	classroom management issues
peer observations	lesson planning
detailed feedback sessions, including one-to-ones with your personal trainer	appropriate language
grammar	interactive materials
phonology	technology in the classroom
the 4 skills	textbook evaluation
the communicative approach	songs and chants
language in context	theatre techniques
teaching vocabulary	teaching young learners
dealing with errors	teaching Business English
	professional development

On successful completion of the programme, you will receive a Certificate from Trinity College, London. We will, additionally, be happy to provide a reference to a potential employer during your future job search.

## ACCOMMODATION

We can offer accommodation locally with one of our carefully selected homestay hosts:

(Standard Homestay) Half board, private bathroom, wi-fi

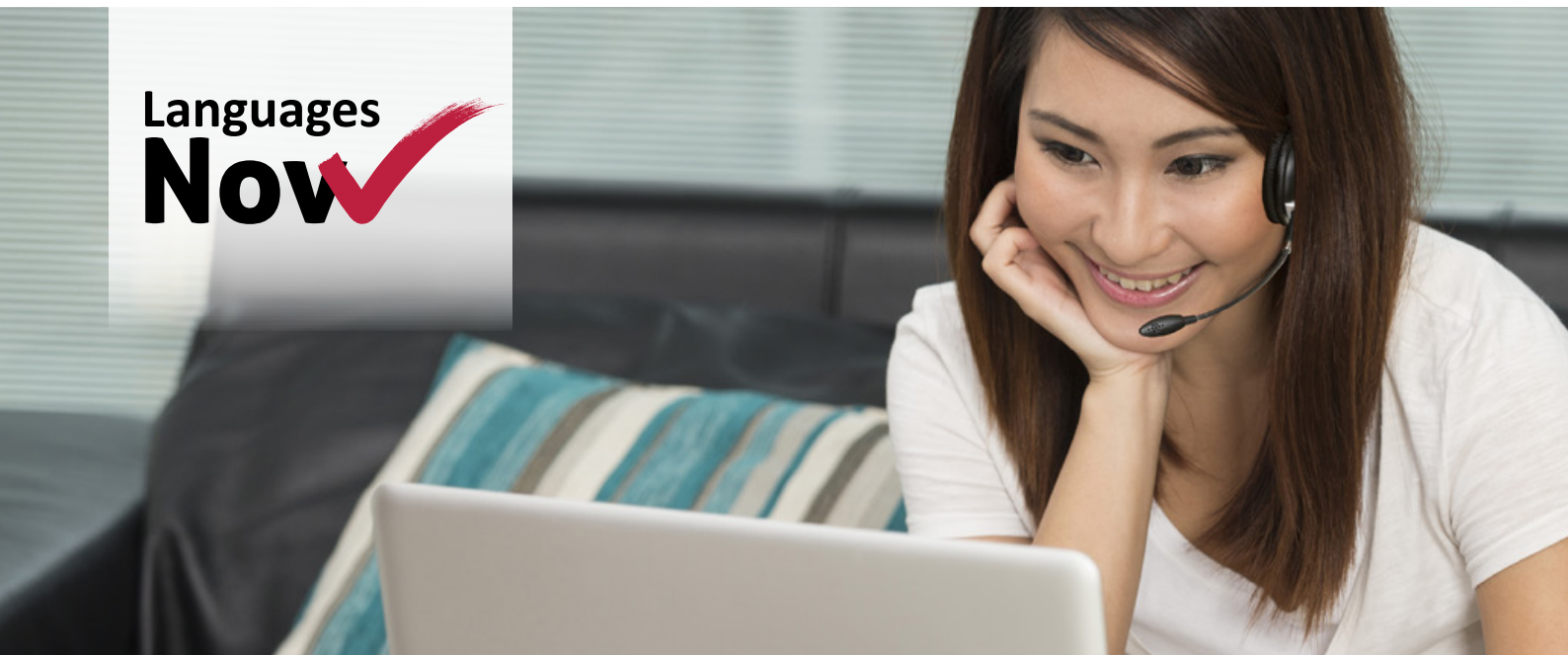
From £170 per person per week

(Executive Homestay) Half board, wi-fi

£250 per person per week

Please see page 29 for more information.

Languages  
**Now** ✓



## Language Teacher Guide

[WWW.LANGUAGETEACHERGUIDE.COM](http://WWW.LANGUAGETEACHERGUIDE.COM)

### What We Offer

Language Teacher Guide has been created for clients who do not require homestay, but who instead arrange their own accommodation (for example a hotel or apartment). Our Language Teacher-Guides come to the client's accommodation to give individual lessons in the target language, or to take the client out to visit the sights, providing structured language lessons and practice along the way – or a combination of the two, according to request. The programme offers complete flexibility.

The Language Teacher-Guides are language teachers experienced in both one-to-one lessons and guiding foreign visitors around places of interest.

### Who For

Designed for individuals, families or small groups, on holiday or on business who would like to familiarise themselves with the city whilst learning the local language - available Worldwide.



**LEO**   
LANGUAGES ABROAD





# Languages Now

[WWW.LANGUAGESNOW.COM](http://WWW.LANGUAGESNOW.COM)

## What We Offer

The opportunity to learn or improve in a language through online lessons from the comfort of your home or workplace, and to be able to benefit from having no travel costs to a language centre. Upon enrolment, you will receive a complimentary 10-15 minute language level assessment with one of our Academic Team. This enables us to determine the best course too meet your needs.

## Who For

Adults and young learners of any level. We provide group and individual courses including general language, business language and exam preparation.

## Afterwards

The course can be extended at any time and by any duration. In addition, a Certificate of Achievement is awarded upon completion.



# Leo Languages Abroad

[WWW.LEOLANGUAGESABROAD.COM](http://WWW.LEOLANGUAGESABROAD.COM)

## What We Offer

Let us know what you want and we will design a package combining the best parts of a holiday with the most effective and fun way to learn a language, in the country the language is spoken. You can include sightseeing trips to tourist attractions or activities you love – for example, why not learn Italian in Italy alongside an Italian Cookery Course? Or Scuba Diving in Spain while learning Spanish – the world is yours to explore and the options are endless!

Accommodation options include homestay, student residence, apartments and hotels, all with the choice of a private bathroom

## Who For

Designed for absolutely everyone! Wherever you would like to go or whatever you would like to do we can accommodate you with a custom built package for much less than you might expect.





<b>Dates</b>	Upon request	<b>Lessons</b>	75 minutes (Double lesson is 165 minutes including a 15 minute break)
<b>Age</b>	8+	<b>Times</b>	Flexible start dates and lesson times
<b>Languages</b>	English, French, Spanish, Italian, German, Russian.	<b>Course Types</b>	General Language (International Group - Adults), Corporate Group, Junior Group, IELTS Exam Preparation, 1-2-1 course, 2-2-1 course, Language for Specific Purposes (e.g. Business, Law, Medicine, Engineering, Aviation).
<b>Levels</b>	Beginners to Proficient (A1 to C2)		
<b>Price</b>	£625 for a 4-week (50 hours) General Language Course.		

Learn a language from the comfort of your home or workplace and benefit from no unnecessary travel costs. Improve the standard of your language in one of our popular open group classes, a bespoke private group class or a personalised 1-2-1 / 2-2-1 course. All our learning programmes are managed by experienced and qualified teaching professionals based in our British Council-accredited language school in the UK, English in Margate.

All you need is a quiet room, a PC, laptop, tablet or phone with a camera and microphone, and a good internet connection. Our lessons are delivered via ZOOM which is free; you will need to download it before the pre-course language assessment with one of our Academic Team.

An end of course certificate is issued upon request.



## Language Teacher Guide

WWW.LANGUAGETEACHERGUIDE.COM

<b>Dates</b>	Any time of year	<b>Destinations</b>	UK: London & Edinburgh Ireland: Dublin & Cork USA: New York & San Francisco Canada: Toronto & Vancouver Australia: Sydney New Zealand: Auckland Malta France: Paris & Nice Italy: Milan, Florence, Rome & Pisa South Africa: Cape Town Germany: Frankfurt, Munich & Stuttgart Norway: Oslo Spain: Madrid & Barcelona Other destinations available upon request
<b>Age</b>	Any		
<b>Levels</b>	Intermediate / B1 upwards		
<b>Languages</b>	Lessons and practice are given in the language spoken in the country visited. English lessons and practice may, as an alternative, be given in most destinations.		
<b>Price</b>	There is a one-off registration fee of £20, €30, or \$30 (depending on destination) on the first booking. Each contract is charged on an hourly basis at the rate per contact hour of £50, €80 or \$80. There is a further charge per session of £25, €35 or \$35.		

Language Teacher Guides can be booked 7 days a week between 08:00 and 20:00. There is a minimum of 3 contact hours per session. The client may book 2 sessions in one day (for example 09:00 - 13:00 and 16:00 - 20:00) but the same Language Teacher Guide cannot be guaranteed. The minimum contract is 6 hours.

Clients can share the class/visits with a spouse or family member at no extra charge providing they have approximately the same language level. If two or more unrelated clients share the class/visits each is charged the hourly rate less 20%, but only one session fee will be payable per session.

The currency invoiced depends on the destination. UK is £ - Pound Sterling. Ireland, France, Germany, Malta, Spain and Italy are € - Euros. USA, Canada, Australia and New Zealand are \$ - US Dollars. Clients pay all expenses (including those of the Language Teacher Guide) incurred during contact hours: transport, entrance fees, light refreshments. In the event of cancellation, a cancellation fee of 50% of the contact hours' fees is charged.

## Terms & Conditions (see websites for full Terms & Conditions)

We reserve the right to apply our Terms and Conditions for all clients, including those who have booked through a partner agency.

### General

Leo Languages considers the choice of family to be more important than a specific town and reserves the right to change the area if there is no compatible family in the area chosen. Leo Languages reserves the right to place a student with more than one host teacher on a given course and also reserves the right to change the allocated teacher before or during the course.

### Insurance

Insurance against cancellation, accident, illness, loss of property, theft or any accidental damage the student may cause to the property of others is the responsibility of the student or student's parent/guardian and personal insurance is required. You may consider using Guard Me. The policy may be booked online at guard.me. Leo Languages will not accept any responsibility for injury or damage caused to persons or property during the stay - students are liable for damage they cause to property in their accommodation or on school premises. All EU students travelling to an EU destination must possess the European Health Insurance Card. Parents must take appropriate measures to protect their children's valuables and other personal possessions.

### Dietary requirements

We do our best to accommodate special dietary requirements. We reserve the right to charge a supplement for students requiring any diet where the family needs to buy special products (e.g. gluten free bread, halal).

### Special needs

We try to accommodate students with special needs. As our students are generally housed in homestay accommodation, it may not be possible to cater for students with special needs.

## Additional Junior Terms & Conditions (see websites for full Terms & Conditions)

### Parental Consent Forms

For all students under the age of 18, a parental consent form, included in the enrolment package, must be completed and sent to us in advance of any course or the enrolment is not confirmed.

Students under the age of 18 will be dropped off and picked up after lessons and/or activities by their host families.

(Students aged 15-17 may be allowed to walk by themselves if Leo Languages receives written and signed consent from their parents, at the time of booking, allowing them to walk to and from school/activities)

Students aged 14 and under will not be allowed to walk to and from school/activities by themselves under any circumstances.

## Suggested things to bring:

We advise students to bring a rucksack, waterproof coat and comfortable shoes e.g. trainers, sports/swimming outfit for days involving sports or the beach. Students who bring a mobile phone charger or any other electrical equipment will need an appropriate adaptor. A minimum of £100, €100 or \$100 in small denominations per week for pocket money expenses during their stay is recommended.

For junior students, parents are advised to check with their airline what documents are needed when taking their child to check-in on departure. We do not accept any responsibility if a student is refused travel for insufficient documentation.

### Medical conditions and illness

Enrolments are accepted on the understanding that the student has no illness or infirmity which might adversely affect the success of the stay. Any medical condition must be declared at the time of booking. We reserve the right to terminate the course without refund of fees if this condition is breached. Class hours missed because of student illness or absence during the course are forfeited and any recuperation of missed class time is at the sole discretion of Leo Languages. Class hours not given because of teacher illness or unforeseen absence will be refunded on a pro rata basis.

### Photography

We may use images of students - not identified by name - in our publications. Parents are asked to specify if they do not wish their child to be photographed or to appear in any of our publications.

### Arrivals and departures

Arrivals at the host teacher's home should be during the late afternoon or early evening. As a matter of courtesy we ask students travelling independently to contact their hosts in advance to advise them of approximate arrival times. Departure transfers before 07:00 will normally require a taxi and will not be undertaken by the host teacher. Departure on the last day should be no later than the student's original arrival time on the first day.

If an arrival transfer is requested, we must receive travel details as soon as possible (minimum of one week before arrival) so that an arrival transfer can be arranged. When an arrival transfer has been requested we will automatically pass on details of the student's arrival time to the host teacher.

### Additional expenses

We recommend that students allow a minimum of £100, €100 or \$100 per week for pocket money expenses during their stay.

### Stays of 28 nights plus in the UK

Stays of 28 nights or over for students aged under 16 are considered to be a private fostering arrangement by UK authorities. There is a supplement of £200 for any such stays to cover the additional administration required. A stay of 27 nights or less will not incur this supplement.

### Student discipline

We reserve the right to send a student home for disorderly conduct, at their parents' expense with no refund on fees.

Examples of disorderly conduct:

- Threatening behaviour and abusive language
- Involvement with illegal drugs
- Buying or being in possession of cigarettes or alcohol
- Theft or vandalism
- Bullying
- Continued disobedience of house rules

# Payment Details

## **Making payments for International Language Homestays, Home Group6, English in a Castle, Junior Residence, Languages Now & Language Teacher Guide:**

Payments should be in sterling (£), euros (€) or US dollars (\$) according to your invoice. All currencies not listed should be paid in sterling (£). Please note that any bank charges must be paid by the sender.

Credit card payment at the following secure web address: <http://www.ilh.com/payment/>

Bank transfer: Please ask for bank details if required

## **Making payments for English in Margate, English in Canterbury, English-on-Sea and Train to Teach English:**

Payments should be in sterling (£) or euros (€) according to your invoice. All currencies not listed should be paid in sterling (£). Please note that Natwest Bank's inland payment department charge 7 GBP for all payments received in sterling, so if paying by bank transfer, you must add 7 GBP to the total amount to be transferred.

Credit card payment at the following secure web address: <http://www.englishinmargate.com/payment/>

Bank transfer: Please ask for bank details if required

## **Making payments for Leo Languages Abroad:**

Payments should be in sterling (£), euros (€) or US dollars (\$) according to your invoice. All currencies not listed should be paid in sterling (£). Please note that any bank charges must be paid by the sender.

Credit card payment at the following secure web address: <http://www.ilh.com/payment/>

Bank transfer: Please ask for bank details if required

# Terms of Payment

- A £200 deposit, to include the registration fee, is payable at the time of booking.
- Payment in full must be made four weeks before the start date of the course or as specified on your invoice.
- Payment should be made in the relevant currency to the correct bank account - see above for details.
- Bank charges are the payer's responsibility. The amount invoiced must be received in full and any underpayment must be settled before the course starts.
- If a course is cancelled by the client more than 28 days before the scheduled course start date a cancellation fee equal to the deposit will be charged (i.e. £200, €300 or \$300, depending on the currency invoiced). If the course is cancelled from 28 days to 7 days before the start of the course, 50% of the fees will be refunded; there is no refund if a cancellation is made less than 7 days before the start of the course. No refund is made once the course has started.
- If a course is postponed within 4 weeks of the scheduled arrival date, an additional fee of £150, €200 or \$200 will be charged.



**Enrol online at**  
<http://www.leolanguages.com/enrol>

Leo Languages is, for me, the culmination of over 30 years in language teaching.

Early memories take me back to when I was a student and summers spent teaching English to classes of boisterous teenagers in church-halls. That did not deter me!

After graduating from Bristol, I took an English language teaching course in London and, in the mid 80's, I joined a local part-family owned business that pioneered 'living and studying' in teachers' homes worldwide. In the mid 90's, I opened a school for adults in south-east England and, following British Council accreditation and membership to English UK, we were invited to become a member of IALC, an award-winning, global network of independent language schools.

Under the umbrella of Leo Languages, I am delighted to present, in this brochure, a comprehensive and diverse range of language programmes for everyone.



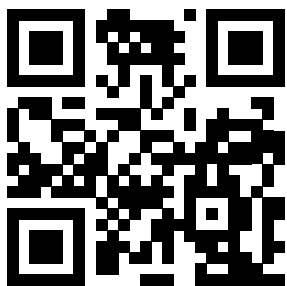
**ADAM WILTON**  
MANAGING DIRECTOR

mobile: +44 7939 208591  
email: [adam@leolanguages.com](mailto:adam@leolanguages.com)

# Get in touch

Leo Languages  
The Towers  
Hawley Square  
Margate  
Kent CT9 1PH  
United Kingdom

Phone +44 1843 227700  
Email [info@leolanguages.com](mailto:info@leolanguages.com)



[www.leolanguages.com](http://www.leolanguages.com)

Published 11/2021

Leo Languages Ltd. Registered in England Company No. 8122032

Margate Language Centre Ltd. (trading as English in Margate). Registered in England Company No. 2982694

International Language Homestays Ltd. Registered in England Company No. 08163468

Registered Address: The Towers, Hawley Square, Margate, Kent, CT9 1PH, United Kingdom

