



inlingua Cheltenham 2025
BROCHURE & PRICELIST

CONTENTS

INTRODUCTION

- 4 inlingua Cheltenham on the map
- 6 Welcome to inlingua Cheltenham

ENGLISH COURSES

- 10 General English
- 11 Intensive English
- 12 One-to-One Lessons
- 13 Combination Programme

PROFESSIONAL ENGLISH COURSES

- 14 Business English
- 15 Business English for Groups
- 16 Specialised Training
- 17 Volunteer Work Placement

JUNIOR COURSES

- 18 State School Placement
- 20 Family Study Tour
- 21 Safeguarding
- 22 Cheltenham Ladies College Summer Camp

ENGLISH +

- 24 English Summer School
- 26 Cheltenham: A Festival Town
- 28 English with Gardens and Culture
- 30 Castles and Cathedrals
- 32 Christmas in the Cotswolds

TRAINING AND CERTS

- 34 Certificate in TESOL
- 35 Teacher Training Workshop

ACCOMMODATION

- 36 Host Family Accommodation
- 37 Other Options

GENERAL INFORMATION

- 38 Arriving to inlingua Cheltenham
- 39 School Facilities
- 40 First Day
- 42 Enrolment Forms
- 44 Terms and Conditions



"inlingua Cheltenham is a really beautiful place to improve your English. There are dedicated teachers and a pleasant atmosphere for group lessons."

Anna, Switzerland



INLINGUA CHELTENHAM ON THE MAP

The United Kingdom is the perfect destination to learn English in its most natural environment.

In Cheltenham students can improve their English in pleasant and tranquil surroundings yet still be within a short distance of many of the biggest destinations in the UK.

Airports:

Heathrow: 2 hrs
 Gatwick: 2.5 hrs
 Manchester: 3 hrs
 Liverpool: 3 hrs
 Stansted: 3.5 hrs
 Luton: 3 hrs
 East Midlands: 1 hr 45 mins
 Bristol: 1 hr 15 mins
 Birmingham: 1 hr 15 mins

Places of interest:

Central London: 2.5 hrs
 Bristol: 1 hr
 Cardiff: 1.5 hrs
 Oxford: 1 hr
 Bath: 1 hr 25 mins
 Stratford upon Avon: 45 minutes
 Stonehenge: 1.5 hrs
 The Cotswolds: 5 mins
 Gloucester: 30 mins

You can reach us by:



Train



Coach



Taxi



Cheltenham is ideally located because of its access to and from major cities and airports by train, coach or car.

WELCOME TO INLINGUA CHELTENHAM

Dear students,

I am delighted to welcome you to inlingua Cheltenham, and I am confident that you will love your time at our school. Cheltenham is a fantastic town in which to live and experience authentic British culture.

I am the new owner of the school, and I have many exciting plans for the future. Until now, David Arrowsmith has done an inspiring job making the school into a world-class educational centre. He has helped thousands of students gain an education and enjoy a study experience in England. I am grateful for all of his hard work.

inlingua Cheltenham has been teaching English for over 30 years, and I want to make sure that it keeps doing so for many more.

I have been an agent in international education for many years, so I know what is important to parents and students. I am committed to making inlingua Cheltenham the ideal location for any type of study programme.

When you arrive at our school, you will be welcomed into our family. My experienced team are skilled professionals and will take care of all of your needs. I will ensure that you are well looked after as you study English, make friends and enjoy an unforgettable study experience.

I look forward to meeting you soon.

Daniel Foulkes

inlingua Cheltenham Principal





GENERAL ENGLISH COURSES

At inlingua Cheltenham, our main focus is to provide English language courses for overseas students. We are dedicated to helping students from all different backgrounds and levels improve their English and achieve their language learning goals. That is why our English courses are specially designed to meet the needs of each student.

In the classroom, students will be taught by a fully qualified and highly experienced English teacher. They will study in a group with other students at their level. This is an amazing opportunity to learn in an authentic English environment.

GENERAL ENGLISH—20 LESSONS PER WEEK

General English is a popular programme for students who are beginning their English-learning journey. The course is taught at an ideal pace that allows students to improve their skills and enjoy their time living in England. This course offers 20 lessons per week (15 hours) and runs from 09:00-12:15 each weekday.

Courses	Code	Lessons per week	1 - 4 weeks	5 - 8 weeks	9 - 12 weeks	13 - 24 weeks	25 - 36 weeks	37 - 48 weeks
General English	GE 20	20	GBP 350	GBP 330	GBP 310	GBP 280	GBP 250	GBP 230
Price includes: 20 lessons per week, all course books and materials, access to inlingua Cheltenham facilities, proficiency evaluation, individual learning plan								



LIGHT ENGLISH—10 LESSONS PER WEEK

For those students who do not require a visa or are working in the area, we offer a reduced course option of 10 lessons per week (7.5 hours).

Courses	Code	Lessons per week	1 - 4 weeks	5 - 8 weeks	9 - 12 weeks	13 - 24 weeks	25 - 36 weeks	37 - 48 weeks
Light English	GE 10	10	GBP 160	GBP 140	GBP 125	GBP 115	GBP 110	GBP 105
Price includes: 10 lessons per week, all course books and materials, access to inlingua Cheltenham facilities, proficiency evaluation, individual learning plan								

INTENSIVE ENGLISH

Learning English is a difficult but rewarding journey. Students who attain a strong proficiency in English have many opportunities available to them in life. At inlingua Cheltenham, we work hard to provide the best quality education so that all students leave our school closer to their language learning goals.

Intensive English is the most effective way to become fluent in English, so we recommend it for any student who wants to achieve higher proficiency.

INTENSIVE ENGLISH—30 LESSONS PER WEEK

Intensive English is the perfect course for students who have a clear goal to improve their English and are willing to work hard to achieve it. Intensive English requires a serious commitment to language learning, with 30 lessons per week (22.5 hours) held Monday to Friday. Classes run from 09:00 to 15:00 including breaks.

Courses	Code	Lessons per week	1 - 4 weeks	5 - 8 weeks	9 - 12 weeks	13 - 24 weeks	25 - 36 weeks	37 - 48 weeks
Intensive English	GE 30	30	GBP 425	GBP 390	GBP 365	GBP 335	GBP 300	GBP 275
Price includes: 30 lessons per week, all course books and materials, access to inlingua Cheltenham facilities, proficiency evaluation, individual learning plan								

During the morning, students focus on General English skills covering all four disciplines: reading, writing, listening and speaking. Afternoon lessons focus on key skills for achieving target scores on English exams like IELTS and TOEFL.

Intensive English helps students of all ages to refine their skills in preparation for further education and careers. Students who take Intensive English at inlingua Cheltenham develop the necessary skills to succeed in the modern English-speaking environment.



ONE-TO-ONE LESSONS

Private lessons are a good option for students to make quick progress and reach their specific language goals. Students can work with their one-to-one teacher to design lessons that will best help them to prepare for their education, grow in their career and expand their opportunities. Each one-to-one lesson is planned specifically around the student and their linguistic needs.

LANGUAGE SKILLS ONE-TO-ONE PROGRAMME

Summary	Code	Lessons	Cost
One-to-one lessons 45 minutes per lesson	CIP 10	10	GBP 530
	CIP 20	20	GBP 970
	CIP 30	30	GBP 1360
	CIP 40	40	GBP 1600

Price includes: One-to-one English lessons (1 lesson=45 minutes), all course books and materials, access to inlingua Cheltenham facilities, proficiency evaluation, individual learning plan



EXAM PREPARATION

One-to-one lessons are a great option for students who are preparing to take an English proficiency exam. Students who are preparing to take the IELTS, Cambridge Advanced, TOEFL or other exams can receive personalised training at inlingua Cheltenham that will target their weak spots and help them to achieve their target score.

Students who are looking to achieve a specific score should request a consultation at the beginning of their course at inlingua Cheltenham in order to evaluate what work needs to be done to prepare. Interested students should contact info@inlingua-cheltenham.co.uk.

ONLINE ENGLISH

Students who want to develop their English from their home country may have the option to take private online lessons. This allows students to learn and develop their skills from home and around their own schedule.

Availability of online courses is limited. Students should contact inlingua Cheltenham at info@inlingua-cheltenham.co.uk for information about online course availability.

COMBINATION PROGRAMME

Most students who take one-to-one classes still want to enjoy the group lesson experience, so they typically combine General English courses with one-to-one lessons. We offer flexible packages so that students can mix and match to create the best programme for their English learning goals.

GENERAL ENGLISH COMBINATION PROGRAMME

Dates: Start any Monday

Class Size: 12 for group class, 1-to-1 for personal lessons

Levels: Elementary to Advanced

Age: Adults aged 16+

Summary	Code	Lessons per week	Cost per week
20 general English lessons + 5 one-to-one	GE 20+5	25	GBP 565
20 general English lessons + 10 one-to-one	GE 20+10	30	GBP 790
30 general English lessons + 5 one-to-one	GE 30+5	35	GBP 650
30 general English lessons + 10 one-to-one	GE 30+10	40	GBP 855

Price includes: Group English classes, one-to-one lessons, all course books and materials, access to inlingua Cheltenham facilities, proficiency evaluation, individual learning plan



BUSINESS ENGLISH

In the modern world, business is primarily conducted in English. Because of this, knowing English is an incredibly important and valuable skill. For many years, professionals from countries like Germany, China, Japan and more have come to inlingua Cheltenham to develop their business English skills.

Our dedicated Business Centre is situated in the building next door to the main school to ensure that our business clients have independent classrooms specifically for their business needs.

GENERAL PLUS BUSINESS ENGLISH

Throughout the year, students have the opportunity to enrol in a course which combines General English classes in the morning and business English classes in the afternoon. This is similar to the Intensive English programme.

Availability for this afternoon course is subject to enrolment of at least 4 students in the class.

Course	Code	Lessons per week	1 - 2 weeks	3 - 4 weeks	5+ weeks
General + Business English	GBE 30	30	GBP 540	GBP 520	GBP 460

Price includes: 20 lessons per week General English, 10 lessons per week Business English, all course books and materials, access to inlingua Cheltenham facilities, proficiency evaluation, individual learning plan



ONE-TO-ONE BUSINESS LESSONS

Students can choose to take one-to-one lessons with an English instructor with a specific focus on business topics and skills. The instructors are specially trained in business English.

Summary	Code	Lessons	Cost
Business one-to-one lessons 45 minutes per lesson	SCIP 10	10	GBP 630
	SCIP 20	20	GBP 1070
	SCIP 30	30	GBP 1460
	SCIP 40	40	GBP 1700

Price includes: 1-to-1 business English lessons, all course books and materials, access to inlingua Cheltenham facilities, proficiency evaluation, individual learning plan

BUSINESS ENGLISH FOR GROUPS

MINI GROUP COURSES

We offer customised Business English courses for groups of at least 4 students. These groups are usually colleagues travelling together from their company to learn English skills for their specific industry. We can provide training in all different fields and skillsets of business.

Mini group courses are a great way for businesses to train their staff for the modern business environment.

Course	Code	Lessons per week	1 - 2 weeks	3 - 4 weeks	5+ weeks
Business English Mini Group	PSP 20	20	GBP 540	GBP 520	GBP 460
	PSP 30	30	GBP 760	GBP 740	GBP 690

Price includes: Private group business classes, all course books and materials, access to inlingua Cheltenham facilities, proficiency evaluation, individual learning plan

SOCIAL PROGRAMME

As part of their study programme, groups may choose to supplement their studies with activities and excursions. The staff at inlingua Cheltenham are prepared to help arrange activities such as business dinners, presentations, interviews and mock meetings for an additional cost.

Groups may also choose to take trips to local destinations, including visits to local businesses (pending an arrangement with the business). In the past, students have toured local factories, shops and firms to better understand how business is conducted in England. The social programme is a great way for students to understand not just the language of business in England but the culture as well.



SPECIALISED TRAINING

inlingua Cheltenham is dedicated to providing a custom study experience that fits every student's needs. Just because a specific subject is not featured in this brochure does not mean we are not able to teach it. We work with a variety of specialist instructors who can train students in different subjects.

These lessons can be done individually or in small groups of at least 4 students. Below are some of the topics that we provide specialised training for:

Engineering	Health and Medicine	Tourism	Military
Aviation	Finance	History	Literature
Politics	Communication	Religion	Energy

If there is a study topic which is not on this list, please email info@inlingua-cheltenham.co.uk to see options for sourcing a skilled English teacher in the target field.

ONE-TO-ONE SPECIALISED TRAINING

Specialised training is available to individual students in one-to-one lessons. Students can work with their instructor to identify and focus on key English skills in the target subject or discipline.

Summary	Code	Lessons	Cost
Specialised one-to-one lessons 45 minutes per lesson	SCIP 10	10	GBP 630
	SCIP 20	20	GBP 1070
	SCIP 30	30	GBP 1460
	SCIP 40	40	GBP 1700
Price includes: One-to-one business English lessons, all course books and materials, access to inlingua Cheltenham facilities, proficiency evaluation, individual learning plan			

MINI GROUP SPECIALISED TRAINING

Specialised training can also be provided to small groups of at least 4 students. Often these groups travel together from schools, universities, corporations or governments to fulfill targeted training in their field or discipline. We offer an exceptional and professional approach to these educational experiences.

Course	Code	Lessons per week	1 - 2 weeks	3 - 4 weeks	5+ weeks
Specialised Subject English Mini Group	PSP 20	20	GBP 540	GBP 520	GBP 460
	PSP 30	30	GBP 760	GBP 740	GBP 690
Price includes: Private group business classes, all course books and materials, access to inlingua Cheltenham facilities, proficiency evaluation, individual learning plan					



VOLUNTEER WORK PLACEMENT

Students 18 and older can volunteer with a charity or voluntary sector organisation in the UK. This gives students the opportunity to gain unpaid work experience in the UK, which they can use to train for their own professional development. Students can choose from a variety of sectors for their volunteer placement.

The Standard Visitor Visa gives all nationalities traveling to the UK the right to volunteer with a registered charity for up to 30 days (6 weeks) while they complete their English language course. Volunteering is not available during Summer School but is welcome at any other time of the year.

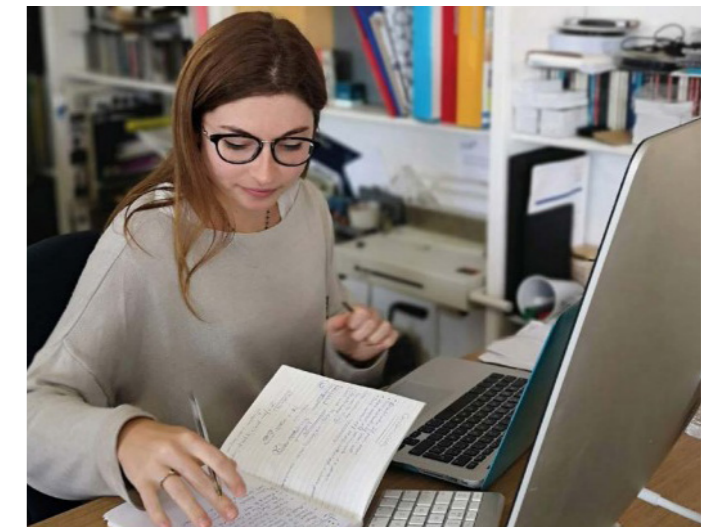
Volunteering is a great way to build English skills and add value to a CV or resume.

Contact info@inlingua-cheltenham.co.uk for more details.

Summary	Volunteer Work Placement
Code	EPV
Maximum Stay	6 Weeks (30 days)
Cost	GBP 525 flat fee
Price includes: Volunteer work placement in a local registered charity	

Note: The cost of the volunteering course only covers the placement in a volunteer programme. Any English lessons at inlingua Cheltenham are booked additionally.

Note: Because of volunteering regulations, this course is only available to students aged 18+.



STATE SCHOOL PLACEMENT

A state school placement is the best way for young students to enjoy a totally immersive British cultural experience. inlingua Cheltenham is proud to offer this opportunity for international students aged 11-18 to understand what it's like to live like a British teenager. This affordable alternative to private schools is a great option for students.

We work with a number of local schools who are happy to accept international students to join their classes. If a student has proficient English, they will be placed into a classroom with British pupils.

This course is for students from the ages of 11-18. Students aged 11-16 will join the school year for their age and will study up to 12 subjects a week. This will be taught in English, and the student will be in a class with mostly British students. Students aged 16-18 will join A-level classes, where they will study 3 or 4 subjects in depth.

Please note that State Schools in the Cheltenham area are predominately British schools and therefore make no provision for international students and will not have EFL support classes. We recommend that if a student is not up to an intermediate level of English (B1), then a period of EFL classes with inlingua Cheltenham should be completed first.

State schools in the UK run a three-term year. Terms start in September, January and April. Students can enrol in this course from one week all the way up to two terms. Start dates are entirely flexible.

We will arrange accommodation that best suits the needs of the student. The host families we provide for state school students have great experience helping teenagers adjust to life in the UK. Cheltenham is a particularly safe, clean and pleasant town. Parents should be assured that their children are in good hands. We can also arrange a guardian as a service for an additional charge.

Some of the schools we work with:

- Balcarras
- Pittville
- St Peter's
- Wyedean
- Winchcombe
- Crypt School
- Cotswold School
- Chosen Hill
- Dean Close
- Cleeve
- Haberdashers
- Bournside

School holidays and breaks:

Students who choose to do a long-term placement at a state school (maximum two terms) will have school holidays at different times throughout the year. Some holidays, like half term break, Christmas and Easter, last for a week or more.

During these breaks, inlingua Cheltenham students must either take English courses at inlingua Cheltenham or return home for the duration of the holiday. Under 18s may not stay at their host family's home without a supervised daily schedule of lessons.

STATE SCHOOL AND SIXTH FORM PLACEMENT (INDIVIDUALS)

Course Summary: State School Placement including Host Family Accommodation

Course Code	Length	Accommodation	Weekly cost
SSP 1	1-6 wks	Host Family full board	£850
SSP 2	7-14 wks	Host Family full board	£805
SSP 3	15-21 wks	Host Family full board	£765
SSP 4	22+wks	Host Family full board	£725

Price includes:

- Placement in a local state school
- Full school curriculum of up to 12 subjects at GCSE level or 3/4 A levels (subject to course options available at each school)
- Full board homestay during school placement weeks (choice of packed lunch or school lunch)
- Daily transport to and from state school

Price does not include:

- School uniform and school expenses for materials and educational trips
- English courses at inlingua Cheltenham during school breaks
- Homestay accommodation during school breaks
- Airport transfers
- Personal insurance for the duration of the stay
- Registration and accommodation fees
- Personal spending money



FAMILY STUDY TOUR

NEW!

Learning English in the UK is a great opportunity for families to enjoy a study travel experience. That is why we offer a special package programme for parents and their children to come to inlingua Cheltenham and study together.

Cheltenham is a family friendly town with lots for parents and children to do. There are many parks, shops, restaurants, destinations, events and festivals to enjoy for individuals of all ages. Everyone in the family will love their stay in Cheltenham.

In this package, the parent will join a General English 30 class while the child will be placed in a state school for immersion lessons. The parent and child will be housed with the same homestay family in Cheltenham. During the day, the parent and child will enjoy their separate lessons.

If the parent wishes to join a different English course, they may do so for an additional cost. Please contact info@inlingua-cheltenham.co.uk for more details.

Please note that the age of the child must be 11-17. We cannot accommodate for children younger than 11.

FAMILY EXPERIENCE PACKAGE

Course Summary: GE 30 for parents, SSP for children, full board accommodation in a shared homestay.

The price below is offered for one parent + one child.

Course	Code	Lessons per week	Accommodation	Cost per week
Family Study Tour Package	FAM	30	Full board	GBP 1495

Price includes: State School Placement for child, 30 English lessons per week for parent, selected homestay accommodation, individual learning plan, 1 family Saturday excursion

Additional Family Members	Cost per week
Additional Parent	GBP 700
Additional Child	GBP 825

Families that wish to create a special programme to study together may also consult with one of our representatives to design a bespoke travel experience.

Some families may wish to arrange private lessons instead of the standard programme. This can be arranged but may affect the total cost of the programme.

Email info@inlingua-cheltenham.co.uk to learn more.



SAFEGUARDING

We have worked with junior students (11-17 years old) for many years, so we know how important it is to parents that their children are safe and happy. We take that responsibility very seriously, which is why we provide a number of resources to parents who are sending their children to study in Cheltenham.

The host families that house our students have all completed safety background checks from the government. They also receive regular inspections from our in-house accommodation team. They are good families who have worked with us closely to provide great experiences to students from around the world.

In the rare situation that a child needs to be moved to a different host family, our 24/7 on-call staff will swiftly act to find the best solution. Our on-call team is always available to offer assistance to students and group leaders. All students are given the contact information of the on-call team as part of their first day.

In addition to the on-call team, we have 4 qualified and trained safeguarding staff to make sure that every student is safe and cared for.

Safeguarding our students is at the very centre of our ethos. Every person who comes to our school matters, their contributions each unique and recognised. This is especially true for junior students, who we know need special attention and care.

All inlingua Cheltenham staff are on hand at any time for students with our open door policy if someone would like to discuss any issues, and our staffboard allows students to choose who they feel they can trust to speak with.

We lead by example. Everyone at the school is spoken to and treated with dignity and respect: we listen and we encourage academically. Our pastoral care is backed up with age appropriate language and respect for privacy.

For added reassurance for students and their parents, inlingua Cheltenham ensures the following:

- 24/7 emergency phone number for parents and students to contact a member of inlingua staff
- Outside professional training and subscription to Gloucestershire’s Safeguarding Board, which is applicable to all educational institutions that work with young people
- Fully trained staff familiar with safeguard processes, including a designated safeguarding staff team
- Comprehensive background checks for all staff and host families who interact with students as part of their study programme
- Up-to-date accreditation with the British Council, which monitors the standards of schools
- Access to local medical facilities in the case of a medical emergency

We understand that for parents, nothing is more important than the safety of their child. We take that responsibility very seriously and work hard to make sure that each child is safe, comfortable, and healthy during their stay at inlingua Cheltenham.

For questions about our safeguarding policies, please email info@inlingua-cheltenham.co.uk.



inlingua Cheltenham Safeguarding Team

JUNIOR SUMMER CAMP AT CHELTENHAM LADIES' COLLEGE

ilingua Cheltenham is proud to offer a summer camp for 11-17 year olds at Cheltenham Ladies' College for 4 weeks. Cheltenham Ladies' College is famous across England as one of the best girls' schools in the country. We are fortunate to use their amazing facilities once again for our 2025 summer camp.

The inlingua Cheltenham summer camp is contained within the Cheltenham Ladies' College campus but involves activities at destinations all around Cheltenham. During the week, students will also take excursions to some of the top destinations in England, including London, Oxford, Bath and more.

This all-inclusive package mixes learning and fun. The summer camp suits individuals and groups and includes a complete package of lessons, residential accommodation, leisure, activities and excursions.

Course Summary	Start Dates	Course Code	Number of weeks	Fees
Residential English Summer Camp	July 7-July 21	CLC2025	2 weeks	£1380 per week
	July 21-August 4		4 weeks	£1250 per week
	July 7-August 4			
Price includes 20 English lessons per week, full board accommodation in a residential boarding house, complete activities schedule, 1 half day excursion per week, 2 full day excursions per week, all registration fees, weekly laundry service				

Please note: This is only a residential Summer School, so no host family option is available for 2025.

*It is important that all flights are booked for the appropriate dates Monday to Monday. If students arrive early or leave late they may be responsible for arranging their own accommodation in Cheltenham.



This summer camp package is available 7/7/2025-4/8/2025 and includes

- 20 English lessons (09:00 - 12:15)
- Full activity schedule
- 3 weekly excursions
- Full board residential accommodation

SAMPLE ACTIVITY PROGRAMME FOR CHELTENHAM LADIES COLLEGE

	Morning 09.00 – 12.15	Afternoon 13:30 -17:00/17:30 (Approx.)	Evening 1930-2130
Monday	Arrive to Cheltenham. Pick up from designated airport		
Tuesday	Lessons	Tour of Cheltenham	Team Competition
Wednesday	Lessons	Swimming or Arts and Crafts	Trashion Show
Thursday	Lessons	Half Day Excursion	Disco
Friday	Lessons	Drama workshop	ilingua's Got Talent
Saturday	Lessons	Sports	Prom Night
Sunday	Full day excursion to Oxford		
Monday	Full day excursion to London		

SUMMER SCHOOL

AGE: 16 and above

This is an all-inclusive package for an unforgettable summer study experience. For the summer months, inlingua Cheltenham offers daily activities and trips to supplement an intensive English course.

All lessons, accommodation, activities, excursions and fees are included in the package price.

The package is available between 15.06.2025 and 17.08.2025.

ENGLISH EXTRA SUMMER PROGRAMME

Course Summary	Start Dates	Course Code	Number of weeks	Fees
Academic	June 15–August 17	EEXP	1 – 4	£1045 per week
			5 - 8	£995 per week

What is included? 30 x 45 minute lessons per week (GE 30), daily social programme (2 premium evening activities, BBQ, one half day excursion, one full day excursion), and half board accommodation with host family. Full board is available at a supplement of £25 per week.



SAMPLE TIMETABLE

	Morning 09.00 – 12.15	Afternoon 13.30-15.00	Evening 15.30-18.00
Sunday	Arrival to host family		
Monday	General English	English Skills	Mini Golf
Tuesday	General English	English Skills	Free Evening
Wednesday	General English	Half Day Excursion to Oxford	
Thursday	General English	English Skills	Theatre Show
Friday	General English	English Skills	Barbecue Party
Saturday	Full Day Excursion to London		
Sunday	Day with Host Family/Departure		



GARDENS AND CULTURE

Cheltenham is located near the Cotswolds, which is one of the most beautiful regions in England. To take advantage of this proximity, inlingua Cheltenham offers an exclusive travel study experience each summer for students of all backgrounds. This programme gives students the opportunity to explore the amazing gardens, villages, churches and historical sites of the Cotswolds while learning English skills related to their trips.

Programme: 20 lessons per week plus half-day excursions each weekday and a full-day Saturday excursion

Course length: 1–2 weeks

COTSWOLDS STUDY TOUR – COURSE COSTS

Course Summary	Start Dates	Course Code	Accommodation	Fees
English lessons plus daily excursions focusing on gardens and culture	Select dates in May, June, August and September	GARDN	Standard Half Board	£995 per week
			Executive Half Board	£1050 per week
Price includes: 20 lessons of tuition, all materials, transport and entrance fees to all excursions, access to inlingua Cheltenham facilities, chosen accommodation. Choice of full board for a surcharge of £25 pw.				

Note: This course is only offered on select dates but can also be available on demand for groups of 5 or more students.



SAMPLE TIMETABLE IS BELOW FOR 2 WEEKS (Please note: this is a sample programme and is subject to change)

Time	Monday	Tuesday	Wednesday	Thursday	Friday	Saturday
Morning	Assessment and Tour of Cheltenham	Lessons	Lessons	Lessons	Lessons	Full Day Excursion to Bath
Afternoon	Sudeley Castle and Winchcombe	Cotswolds Villages of Bibury and Bourton	Painswick Rococo Gardens and village walk	Croome Park and House	Cirencester Abbey and the Roman Museum	
Time	Monday	Tuesday	Wednesday	Thursday	Friday	Saturday
Morning	Lessons	Lessons	Lessons	Lessons	Lessons	Full Day Excursion to London including a River Cruise
Afternoon	Visit to The Pump Room, Holst Birthplace, Cream Tea	Coughton Court and Gardens	Worcester Cathedral and Civil War Battle	Morgan Car Factory	Hidcote – World Famous Arts and Crafts Garden	

CASTLES AND CATHEDRALS

NEW!

Students who want an exciting cultural experience will love our Castles and Cathedrals course, which is offered all year round. In this programme students will take English lessons in the morning and visit historical sites in the afternoons and weekends. This course allows students to learn the history and culture of England in class as they explore the amazing architecture and legends of these destinations.

Our incredible English teachers become personal tour guides of British history and culture.

Programme: 20 lessons per week plus half-day excursions each weekday and a full-day Saturday excursion

Ages: 16+

Accommodation: Half board host family accommodation included, with options to upgrade to full board

CASTLES AND CATHEDRALS STUDY TOUR – COURSE COSTS

Course Summary	Start Dates	Course Code	Accommodation	Fees
English lessons plus daily excursions to castles and churches	Select dates from October to March	CASTL	Standard Half Board	£1090 per week
			Executive Half Board	£1145 per week

Price includes: 20 lessons of tuition, all materials, transport and entrance fees to all excursions, access to inlingua Cheltenham facilities, chosen accommodation. Choice of full board for a surcharge of £25.

Note: This course is only offered on select dates but can also be available on demand for groups of 5 or more students.

SAMPLE DESTINATIONS

(Please note: these are tentative itinerary options and are subject to change)

Castles	Cathedrals
Warwick Castle	Gloucester Cathedral
Cardiff Castle	Tewkesbury Abbey
Berkeley Castle	Worcester Cathedral
Sudeley Castle	Hereford Cathedral
Blenheim Palace	Bristol Cathedral



A COTSWOLDS CHRISTMAS

NEW!

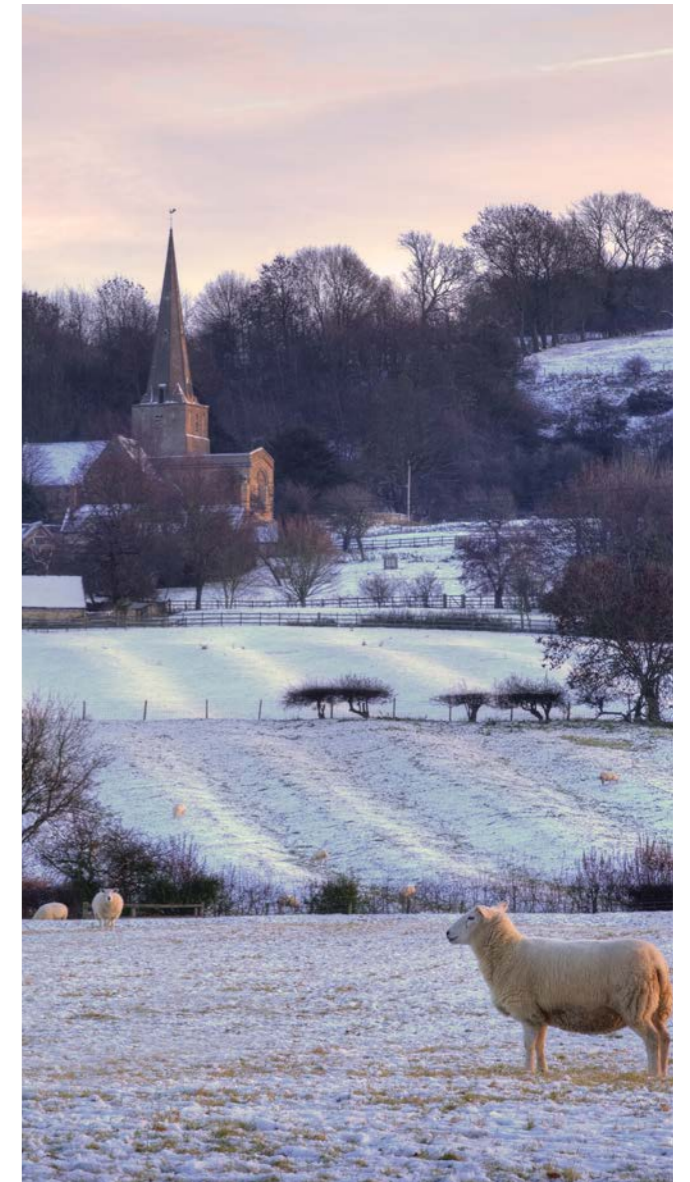
England is famous for its Christmas traditions and culture. During the holiday season, many towns and cities host special events and markets throughout the festive season. This exclusive programme allows students to experience an authentic British Christmas while they study English.

Included in this package is a complete schedule of activities and excursions to amazing local destinations.

Please note that the maximum enrolment for this course is 15 students, so space is limited. Please book early to avoid disappointment.

CHRISTMAS IN CHELTENHAM COURSE COSTS

Course Summary	Dates	Course Code	Accommodation	Cost
British Christmas experience with English lessons and excursions	21 December 2024-04 January 2025 (2 wks)	XMAS	Full Board	GBP 1865
Price includes: 20 lessons per week of English, full board accommodation, excursions to local destinations, all entrance fees, activity schedule, Christmas gift				



SAMPLE TIMETABLE (Please note: this is a tentative programme and is subject to change)

Time	Monday	Tuesday	Wednesday	Thursday	Friday	Saturday
Morning	Lessons				Lessons	
Afternoon	Pantomime at Everyman Theatre	Full Day Excursion to Bath	Christmas Day with Host Family	Boxing Day with Host Family	Cotswold Village Christmas Tour	Full Day Excursion to Windsor Castle
Time	Monday	Tuesday	Wednesday	Thursday	Friday	Saturday
Morning	Lessons	Lessons		Lessons	Lessons	
Afternoon	Half Day Excursion to Tewkesbury Abbey	New Years Eve Party	New Years Day with Hosts	Outing in Cheltenham	Game Night and Farewell Party	Full Day

CHELTENHAM: A FESTIVAL TOWN

Cheltenham has a reputation for being one of England’s best festival towns.. Throughout the year, Cheltenham hosts many festivals, events and special celebrations. These events attract visitors from all across the country and world. In October, famous authors come to participate in the Literature Festival. In April, the world’s top jazz musicians come to perform in our town.

These events make Cheltenham an incredible place for international students to come and enjoy many authentic cultural experiences. Each student can easily find events that will match their interests. Nearby towns and cities like Tewkesbury, Stroud, and Gloucester also put on events throughout the year that students enjoy attending.

Students who are interested in attending any of these events should ask our reception team for more information. We are sometimes able to provide tickets or guidance on the best way to enjoy these cultural events. For certain events, inlingua Cheltenham organises outings for the students to enjoy a unique cultural experience.

Event	Dates
The Cheltenham Festival Horse Race	March
The April Meeting Horse Race	April
Cheltenham Jazz Festival	April and May
Gloucester Tall Ships	May
Cheltenham Fringe Festival	May and June
Cheltenham Science Festival	June
Summer Jam Music Festival	July
Cheltenham Paint Festival	July
Tewkesbury Medieval Festival	July
Cotswold Fest	July
Cheltenham International Film Festival	September
Cheltenham Literature Festival	October
The Showcase Horse Race	October
Cheltenham Oktoberfest	October
The November Meeting Horse Race	November
Christmas Lights at Pittville Pump	November
Cheltenham Christmas Market	December
Cheltenham Ice Rink	December
Christmas Pantomime	December



CHELTENHAM RACECOURSE

Cheltenham is world famous for its horse racing, which takes place at a beautiful race course just outside of town. Several times throughout the year, visitors arrive from all around the world to watch the horse races. Celebrities and Royal Family members often attend these events to cheer on their favourite riders and horses.

Students who want an authentic British cultural experience are encouraged to attend one of these races together with their classmates. Our reception team would be happy to assist any students who would like to purchase tickets for any of these race events (subject to availability).



CERTIFICATE IN TESOL

inlingua Cheltenham is accredited by Trinity College London to provide this excellent, internationally recognised qualification. TESOL stands for 'Teaching English to Speakers of Other Languages'. It is aimed at those with little or no teaching experience and will equip those candidates with the basic skills and knowledge needed to teach English as a second language. The course is QCF Level 5, comparable in difficulty to the second year of an undergraduate degree.

We have a great success rate on our programme: over our last 15 courses, 97% of participants who have completed the course passed and obtained this valuable professional qualification.

No teaching experience is required to enrol in the course. Enrolment is open to anyone with the qualifications for entry to higher education, such as A-levels. Typical participants include...

- College students and recent graduates
- Professionals seeking a career change
- Teachers of other subjects
- Non-native English speakers who wish to teach English in their home countries

NON-NATIVE TRAINEES

For international students, English proficiency equivalent to CPE, CAE or an IELTS score of 7.0, TOEFL 600 is highly recommended.

This is an intensive training course requiring full commitment and focus. Throughout the four weeks, certain assignments require dedicated time outside of the classroom.

Cert TESOL (TEFLi) – Full Time - Trinity College London

Trinity College London (40 lessons per week)

Monday to Friday 09.00 – 10.30, 10.45 – 12.15, 13.30 – 15.00 and 15.15 – 16.45

Course Summary	Course Code	Start Dates	Course Length	Fees
Group training Intensive full time programme: Monday – Friday 0900 - 1700	TESOL	Inquire for start date options	4 weeks	£1550 Course £225 (Moderation Fee)
Prices includes 4 weeks of instruction, books and materials, classroom teaching experience, personal tutoring				



TEACHER TRAINING WORKSHOP

Schools and institutions abroad can choose to recruit one of our amazing teacher trainers to come to their home country and conduct a multi-week training course for local teachers.

This is an amazing way for English teachers to learn from some of the amazing professionals we work with at inlingua Cheltenham.

As part of this course, the visiting instructor will teach the best methodologies and practices for teaching English for whatever demographic is necessary.

Contact info@inlingua-cheltenham.co.uk to receive a personalised quote for a domestic teacher training workshop.



EXAMINATIONS

Many students at inlingua Cheltenham are studying in order to achieve a favourable score on one of the many English exams offered and recognised around the world. These exams can be necessary for entry into university or certain jobs.

While inlingua Cheltenham does not provide testing on-site, we can assist students to find and take exams at certified exam centres around the country. Students who wish to take an exam during their study period should carefully plan their schedule and book their exam in advance where spots are available.

inlingua Cheltenham does not guarantee that participation in English courses will result in a certain score on an exam. Each student is responsible for his or her own exam preparation.

Please note that the exam will not be booked until the full payment for the exam has been paid. In the case of cancellation, any non-refundable exam fees are the responsibility of the student.

EXAMINATION FEES

Cambridge First and Advanced	£190
IELTS (SELT centre)	£220 - £250
Linguaskill	£125
PET and KET	£190

The examination fees include the exam booking, the cost of arranging the booking, and transportation to and from the examination.

HOST FAMILY ACCOMMODATION

Students often say that their living situation is as important as their course

Living with a local family gives students a chance to practise their social English with local families as well as share their own culture with their hosts.

A large number of our host families have welcomed students into their homes for many years and are very experienced and sensitive when a new student joins their family. Many students and host families become friends and stay in touch long after the student has finished their course.

Our host family accommodation is organised in-house by our accommodation officers, and all host families offered by inlingua Cheltenham are checked on a regular basis and conform to the high standards expected by the British Council.

Students will be sent information about their host family ahead of their arrival at inlingua Cheltenham.

PRICES

Standard Homestay	<i>breakfast and dinner weekdays/ three meals on weekends / shared bathroom</i>	£215 pw
Standard Homestay Full Board	<i>breakfast, lunch and dinner every day/ shared bathroom</i>	£240 pw
Executive Homestay	<i>breakfast and dinner weekdays/ three meals on weekends/ private bathroom</i>	£265 pw
Executive Homestay Full Board	<i>breakfast, lunch and dinner every day/ private bathroom</i>	£290 pw
Self-Catering Homestay	<i>no meals/ access to a kitchen/ shared bathroom</i>	£150 pw
Special Diet	<i>a weekly supplement to accommodate students with special dietary needs such halal, gluten-free, vegan, etc.</i>	£25 pw
Summer Supplement	<i>a weekly supplement added to any homestay option for July and August</i>	£25 pw

Please Note: If students want to leave luggage with their host families while they take a holiday, they will be charged £50 per week to do so.

Christmas Holidays: Students are welcome to stay with their host families during the Christmas period when there are no lessons. However, these two weeks will be charged at the Executive Homestay rate of £265 per week and full board will be provided.



ALTERNATIVE ACCOMMODATION OPTIONS

Some students may wish to arrange accommodation that is not with a host family. In this case, students are welcome to book a hotel, bed and breakfast, or private rental in Cheltenham. Students should be aware that if they do choose alternative accommodation, they are responsible for the booking themselves.

If students would like a recommendation for accommodation options, they should email accommodation@inlingua-cheltenham.co.uk. inlingua Cheltenham has special agreements with local hotels that may be able to offer a discounted rate to inlingua Cheltenham students. Please ask if you would like to take advantage of these offers.

ADDITIONAL EXPENSES

REGISTRATION AND ACCOMMODATION ARRANGEMENT FEES:

In addition to the course and accommodation costs, we charge an administrative fee of £100 to cover administrative costs for each booking. The breakdown of this administrative fee is found below.

Registration Fee: £60 (non-refundable, this must be sent with your application form)

Arrangement Fee: £40 (non-refundable, this must be sent with your application form if applicable)

COSTS TO CONSIDER:

Below are some additional costs that students should consider as they prepare for their study programme at inlingua Cheltenham.

Bus Passes: Most students will use the local busses to travel from their host family to inlingua Cheltenham each day. Students can purchase weekly bus passes starting from £18 per week. These passes allow students to travel around Cheltenham.

Daily Transport: If you would like your host family to drive you to inlingua every day, there is an additional charge of £25 per week.

Travel Insurance: Students should find a personal travel insurance policy that will cover them for travel delays, medical issues, lost belongings etc. We recommend finding a trusted insurance provider through the internet.

SIM Card: Students should consider purchasing a SIM card for their stay in the UK. Trusted providers can be found by a quick internet search of SIM Card providers in the UK.

Travel Money: Students should remember to have money for enjoying their time in the UK! Cheltenham is close to many great destinations in the UK, and many students choose to go out and explore during the weekends.

HOW TO GET TO INLINGUA CHELTENHAM

PRIVATE AIRPORT TRANSFERS

Arriving at your host family does not have to be a stressful process, which is why we offer private airport transfers. We are happy to arrange a private transfer from your arrival airport to Cheltenham. We can arrange a private transfer for your departure as well.

Taxi (one way only)	
Heathrow	£205
Gatwick	£240
Stansted	£240
Birmingham	£165
Bristol	£165
London Victoria	£240
Luton	£205

Taxis can be shared between 2,3 or 4 people if arriving at the same time or same flight.

Please note that we reserve the right to charge an excess if your flight has been delayed or cancelled. This is to cover any costs charged to us by the taxi company.

Please note: Most students under 16 years old must be accompanied by an adult at all times during flight arrivals and departures. For those students who are classed as unaccompanied minors (UM), a surcharge of £50 will be applied to cover the costs of the driver accompanying the child through the airport. Students and parents are responsible for communicating this requirement to inlingua Cheltenham.

BY COACH

National Express coaches arrive into the centre of Cheltenham, five minutes' walk from the school. Coaches run from all major airports and cities in the UK. There is an excellent direct coach service from London Heathrow that takes approximately 2 hours. National Express bus tickets can be booked online through the National Express website or a third party. inlingua Cheltenham does not book coaches on behalf of students.

BY TRAIN

Cheltenham can be reached via train from London, Bristol, Birmingham and Cardiff. Regular trains arrive into Cheltenham throughout the day. Students may book their own train ticket online or at the station. Please note that Cheltenham Spa train station is about 2 miles from inlingua Cheltenham, so students may wish to take a taxi or bus from the station to the school.

AIRPORTS

The nearest airports to Cheltenham are Bristol International and Birmingham International. However, there are excellent transport links from London Heathrow, London Gatwick, Luton, Stansted and Cardiff. There are many low cost airlines flying to and from various airports in the UK to European cities.

These include: www.easyjet.com, www.ryanair.com, www.Eurowings.com

TRAVEL WITHIN CHELTENHAM

Weekly bus tickets are available in Cheltenham which entitle students to unlimited travel on buses throughout Cheltenham. These are priced at approximately GBP 18 per week and can be purchased on board the bus.

TRAVEL WITHIN THE UK

Cheltenham's railway station has excellent connections throughout the UK, including direct trains to London, Cornwall, Birmingham, Bristol, Manchester, Edinburgh and many other destinations. For further information, see www.nationalrail.co.uk

National Express is the main bus service in England. It offers expressway coach services linking many cities and towns. For further information see www.nationalexpress.com

INLINGUA CHELTENHAM FACILITIES

LOCATION

inlingua Cheltenham comprises two well maintained period buildings in the centre of Cheltenham. With 20 classrooms, we can teach up to 150 students at any one time.

BUSINESS CENTRE

Our Business Centre is a dual-purpose building for those who wish to come to the UK to study Business English. During the quieter seasons we can reserve this building for corporate clients; it becomes a serious and tranquil environment to study amongst like-minded professionals.

MAIN SCHOOL

Our main school is next door to the Business Centre. Students at our main school study our General English programmes. This includes courses of English for the over 50s, Teacher Training, Aviation and Military English, Mini Stays and evening classes.

Our campus has the following amenities:

- Free Wi-Fi throughout the school
- Tablets available to hire
- 3 film rooms for learning or recreation
- Learning Centre
- Computers in each classroom
- Reading Room with extra computers
- Large common room and garden



YOUR FIRST DAY

LESSON TIMES AND EFL LANGUAGE LEVELS

The times of your lessons during the weekday are as follows:

09:00 – 10:30	Double lesson
10:30 – 10:45	Break
10:45 – 12:15	Double lesson
12:15 – 13:30	Lunch
13:30 – 15:00	Double lesson
15:00 – 15:15	Break
15:15 – 16:45	Free time or Self Study or lessons

FIRST DAY AT SCHOOL

All new students begin their course on Monday mornings. Students staying in host family accommodation will receive directions regarding how to get to school from their host family on the first morning. Students without host family accommodation will have received their school details before their arrival and should make their own way to the school for 08:45.

TESTING

On the first day at inlingua Cheltenham, students are given a test to determine their current level of English. The test consists of multiple choice questions and/or a written paper and a one-to-one interview to check the speaking level.

Students are then placed in a class at an appropriate level. Students are monitored closely and constantly by their teachers to ensure that they are always at the correct learning level.

ORIENTATION

On the first day, students are given a tour of the school and town centre, during which they will learn more about Cheltenham.

SELF STUDY (FREE EVERY WEEKDAY 1515-1645)

On certain afternoons between 15:15-16:45 inlingua Cheltenham offers a teacher led Self-Study session in our Learning Centre. The teacher is there to help the students with their homework or to explain some aspects of the class lesson they had difficulty with. This service is free and available to all students.



STUDENT LEVELS DETERMINED BY EXAM

inlingua Level	CEFR	Cambridge	IELTS	ESOL	TOEIC	Trinity GESE	Trinity ISE	Macmillan Online test	Inlingua Placement test
Beginner APP IA	Pre-A1					1		Level 1: 0-20	0-20
Beginner APP IB	A1		1.0-2.0	Entry 1		2		Level 2: 21-30	21-35
Pre-intermediate APP2A-2B	A2	KET	2.0-3.0	Entry 2	15-300	3-4	ISE 0	Level 3: 31-50	36-50
Pre-intermediate APP2A-3A	B1		3.5-4.0	Entry 3	350-500	5		Level 4: 51-63	51-70
Established intermediate	B1+	PET	4.5-5.0			6	ISE 1		
Upper intermediate APP 3B-4A	B2		5.5-6.0	Level 1	600-750	7-8		Level 5: 64-80	71-90
Established upper intermediate	B2+	Cambridge First	6.5	Level 2		9	ISE II		
Advanced APP 4A-4B	C1		7.0-7.5		800-850	10		Level 6: 81-100	91-100
Established Advance	C1+	Cambridge Advanced	7.5-8.0			11	ISE 111		
Established Proficient APP 4B	C2		9.0			12	ISE 1V		

WHEN THE SCHOOL IS OPEN AND CLOSED IN 2025

Dates	English and Voc School and Public Holidays National Centre	Business Centre
1st January	Closed	Closed
18th April (Good Friday)	Open for all lessons	Open for all lessons
21st April (Easter Monday)	Closed	Open for all lessons
5th May (May Day Holiday)	Closed	Open for all lessons
26th May (Spring Bank Holiday)	Closed	Open for all lessons
25th August (Summer Bank Holiday)	Closed	Open for all lessons
21st December – 5th January 2025	Closed	Closed



ENROLMENT FORM 2025

PERSONAL DETAILS:

Passport no.

Mr/Mrs/Miss Date of Birth

First Name(s)

Last name

Address

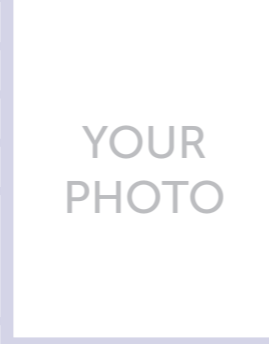
City Postcode

Nationality Country

Occupation

Mobile No.

Email



Emergency contacts in your country (English speaking)

1. 2.

English speaking: Yes No Yes No

Relation to you

Name

Tel. No.

WHAT IS YOUR LEVEL OF ENGLISH?

Beginner A0

Elementary A1

Pre-Intermediate A2

Upper Intermediate B1>B2

Upper Intermediate B2>C1

Advanced C1>C2

COURSE/S REQUIRED

EXAMPLE			Course Name 1		
Start Date	Finish Date	No. of weeks	Start Date	Finish Date	No. of weeks
GE30					
08.01.24	02.02.24	4			
Course Name 2			Course Name 3		
Start Date	Finish Date	No. of weeks	Start Date	Finish Date	No. of weeks

DO YOU REQUIRE A VISA?

Yes Visitor Short Term Study Visa

Up to 6 months Up to 11 months

ENROLMENT FORM 2025 CONTINUED

ACCOMMODATION:

Standard Homestay Executive Homestay Self Catering Homestay

Serviced Apartment Hotel/B&B

Date of arrival Date of departure Half board Full board

With Children: Yes No

With Cats: Yes No With Dogs: Yes No

Do you smoke?: Yes No

Any medical condition(s) we should know about? i.e. diabetic

Please state any allergies

£15 Special Diet Supplement per week (gluten free, vegan, halal)

TRAVEL

I am arriving at

Date of arrival

Time of arrival

Flight No.

I am departing from

Date of departure

Time of departure

Flight No.

I will organise my own transfer A one-way taxi transfer

A two-way taxi transfer

Please send the £60 Registration Fee, and the £40 Accommodation Arrangement Fee (if applicable) with your application form to reserve your course. These fees are non-refundable and are not part of your course fee. Please note: The £60 Registration Fee and the £40 Accommodation Arrangement Fee do not apply to our Business Centre Courses.

HOW TO PAY

By bank transfer in pounds sterling (account details on the invoice you will be sent)

By bankers' cheque (in pounds sterling drawn on a UK bank)

By bank transfer or CC through online 'Pay to Study' system via our website

Through my inlingua school/agent who are:

Signed

Dated

Guardian or Parent signature

TERMS AND CONDITIONS

Please apply as early as possible so we have time to process your application and find you the right type of accommodation and make arrangements for your visa if one is required.

HOW TO APPLY TO THE SCHOOL

GENERAL AND INTENSIVE ENGLISH COURSES (INCLUDING VOCATIONAL PROGRAMMES)

1. You need to complete an Enrolment form. You will find an Enrolment form in this brochure on pages 42 and 43 or obtain one by email, post or online at www.inlingua-cheltenham.co.uk.
2. You need to calculate the total cost of your course by adding together:
 - Total tuition fee
 - £60 Registration Fee (if applicable)
 - Total accommodation price (if required)
 - £40 Accommodation Arrangement fee (if booking accommodation)
 - Airport transfers and other transport services
3. Please email or post the application form, together with your
Registration Fee (£60), Accommodation Arrangement Fee (£40).
4. Send us your flight, train or coach details as soon as you have arranged your travel even if you have not booked the airport meeting and transport service through the school.
5. Tell us immediately if you have to change your course dates because of any delays or if your visa has been refused.
6. Pay the balance of your fees at least three weeks before your arrival date.

Please note: If you are a Visa student, upon confirmation of your enrolment and invoice, you must pay 15% deposit of the total invoice value before we issue the visa letter.

Please note: Upon successful completion of your Visa application, full payment of remaining fees must be paid at least 3 weeks before course starts.

Please note: If you were unsuccessful in gaining a Visa, the deposit is refunded in full, but not the Registration, Visa Application and Accommodation Arrangement Fees and any other costs the school have incurred i.e. bank charges, courier fees.

HOW TO PAY

The invoiced total is normally for full payment in advance for the course and accommodation. All payments must be made in £ Sterling (GBP).

You can pay:

- By cash direct to the school, (Do not send cash in the post).
- By a cheque drawn on an English bank, payable to inlingua Cheltenham.
- By Sterling bank transfer through your bank or via our website 'Pay to Study'
- By Credit Card via our website, please go to the link 'Pay to Study'

Name of Account:

English and Vocational Academy (EVA) Ltd t/a inlingua Cheltenham

Bank:

Lloyds
130 High Street
CHELTENHAM GL50 1EW

Account Number: 34564760

Sort Code: 30-95-72

IBAN Code: GB02 LOYD 309572 34564760

BIC Code (Swift): LOYDGB21108

(If you are paying by Sterling Bank Transfer, you should email or send a copy of the transfer document with your Enrolment form. Please ask the bank to include your name and invoice number or student number on the transfer).

We hope everything in this section is understandable and clear, if for some reason it is not clear please ask, we are here to help:

inlingua Cheltenham, Rodney Lodge, Rodney Road, Cheltenham, Gloucestershire, England. GL50 1HX

Tel: +44 (0) 1242 250493

Email: info@inlingua-cheltenham.co.uk Web: www.inlingua-cheltenham.co.uk

COURSE FEES

All course tuition fees include books and materials. If there are any changes to the UK VAT laws, inlingua Cheltenham books and reserves the right to pass on those changes to the client.

DEPOSIT AND PAYMENT

You will pay a non-returnable Registration Fee of £60 along with the Accommodation Arrangement Fee of £40.

VISA STUDENTS ONLY

A further deposit of 15% of the total invoice value (in all cases a minimum of £100) should be paid on receiving course confirmation and the invoice.

Payment of the 15% will then be credited to your account and a new invoice will be produced for visa purposes. Only after receiving the deposit are we able to issue a Confirmation of Enrolment and your unique visa reference number.

The rest of the course fee is payable in full no later than three weeks before the course commences. If a course is booked less than three weeks before the commencement dates, full payment should be made on receipt of the course confirmation and invoice, otherwise this will be subject to an interest charge of 8% per month or part thereof up to the first day of the course and until payment is received.

We reserve the right to cancel or terminate any course that has not been paid, and students will not be allowed to start their courses until payment has been received.

Please ensure that when you pay the fees you also pay the bank charges for the transfer so that the school receives the full amount. Shortfalls in payment will be requested and interest charged if need be.

Ensure when making your payment that you indicate who the payment is for so as to avoid embarrassing situations when we chase for payments. If a student wishes to pay their accommodation fees in instalments, an admin fee of £25 per instalment paid will apply. Tuition fees should be paid in full before the course starts

GROUP COURSES

GENERAL ENGLISH

If there are fewer than three students on a Language Skills Programme 20 or 30 course, the number of lessons per day may be reduced according to the following scale:

GE30

2 students – from 6 to 3 lessons

1 student – from 6 to 2 lessons

GE20

2 students – from 4 to 2 lessons

1 student – from 4 to 1 lesson

We reserve the right to offer LSP/20 lessons in the afternoon should we, at our sole discretion, feel that this is in the students' or schools' best interests.

BANK HOLIDAYS

Please also note that there are no group course lessons on Bank Holiday Mondays. Please refer to Public Holidays dates on page 34 of this brochure.

HOW TO PAY CONFIRMATION

We reserve the right not to accept a student and/or to terminate without notice a course that has already begun if payment is not made in full in accordance with our payment terms.

CANCELLATION

A cancellation charge will apply according to the following scale:

- up to 21 days before the course begins: lose deposit plus non-refundable fees
- 21 days to 15 days 33% of the total invoice
- 14 days to 8 days 66% of the total invoice
- 7 days to 3 days 75% of the total invoice
- 2 days or less 100% of the total invoice
- no refunds will be made after the course has started

If a course is cancelled due to an unsuccessful visa application, all fees paid to us (minus our bank charges, Registration, Visa Application, Accommodation Arrangement and Courier fees) will be refunded in full, on receipt of written confirmation from the Visa Section of the British Embassy that your visa application has been unsuccessful.

Students on short courses (1, 2 or 3 weeks) can be offered extra lessons to compensate for loss of lessons on Bank Holiday Mondays if it occurs.

EXTENDING YOUR COURSE

All students can extend their course and homestay subject to visa restrictions. We will add the number of weeks of your original booking to your extension and this may mean you will pay a lower price per week for your extension depending which price bracket you fall in to. Please refer to the price list for details.

TAKING HOLIDAYS

If you have booked a course of 12 weeks or more and wish to take a holiday during your course, this is possible AS LONG AS you request the number of weeks you wish to take for holidays at the time you make your booking and when at the school you give us four weeks' notice in writing before taking the holiday. We normally allow students to take a maximum of 1 week's holiday for every 12 weeks that they are in the school.

Holidays arranged after the time of booking or that exceed those pre-booked will be treated as absences and you will lose those weeks of tuition.

Alternatively, you can ask for the free weeks as holiday. Please note no refund or extension will be granted in this situation. If you wish to retain your accommodation you must pay a retainer of £50 per week to the host family while you are away. If students shorten their course, there is no refund of fees

LONG-TERM BOOKINGS

Students cannot reduce the length of their course by changing programmes. Under Home office visa regulations, we are responsible and duty bound to look after you for the whole duration of your course.

All examination classes are in the afternoon. Students who want exam classes must book the LSP 30 course. It is not possible to book LSP 20 and then change the timetable to 10 lessons in the morning and 10 lessons in the afternoon.

Any students in breach of their visa will be reported to immigration.

ACCOMMODATION FEES

inlingua Cheltenham makes a charge of £40 for

arranging accommodation. This charge is also applied if you change host families unless it is deemed the family is unsuitable for you. Please note that family changes are possible if there is a valid reason. The fee that you pay to us for host family accommodation irrespective of the Accommodation Arrangement Fee is what we pay to the host family.

We do, however, have a contract with the host family which stipulates that we must give them four weeks' notice if a student is going to change or leave the family. In exceptional circumstances (for example, the family does not provide what they have promised etc.) we may decide not to give the family 4 weeks' notice.

Examination Fees (for Cambridge examinations, IELTS etc.) are not included in the course price and will be charged separately.

If there are fewer than 5 people enrolled on an LSP30 programme specifically wanting to follow a published IELTS or Cambridge examination preparation Skills Session, we reserve the right to cancel the exam skills sessions and offer alternative skills sessions instead. In these rare situations, we will also offer an extra programme of supervised self-study, in order to help the students to prepare for the exams.

ADDITIONAL CONSIDERATIONS

ACTIVITIES AND EXCURSIONS

Activities and excursions are normally offered as optional extras. These activities are organised for students and offered either free of charge or at cost price (when a cost is incurred by inlingua). Students who prepay activities on the summer programme will normally be guaranteed a place on the activities and excursions they have paid for; however they must still sign up for all activities and excursions, so that appropriate staffing and transport can be arranged.

PHOTOGRAPHY, FILM, SOUND RECORDINGS AND WRITTEN WORK

During our courses we sometimes take photographs, film footage and sound recordings, some of which may be incorporated in to but not limited to future publicity materials, social media sites, tests & educational material.

If you do **not** wish to participate in any of these, please inform the school.





 /inlinguaCheltenham

 company/inlinguacheltenham-school-of-languages

 /inlinguacheltenham/

Rodney Lodge, 9 Rodney Road, Cheltenham, Gloucestershire,

Tel: +44 (0)1242 250 493

Email: info@inlingua-cheltenham.co.uk

www.inlingua-cheltenham.co.uk

Accredited by the
 BRITISH
COUNCIL
for the teaching
of English in the UK

**BUSINESS
ENGLISH UK**
A special interest group of English UK

ENGLISH UK
member 

TRINITY
COLLEGE LONDON
Registered Examination Centre 1814