



LANGUAGE, LEARNING & ADVENTURES 2022

USA · CANADA · UK · MALTA

A message from our Managing Director



Lisa James

Our experience, these past two years, of continuing to deliver programmes during a pandemic to our young learners will support us as we move into what we all hope will be a summer closer to normality in 2022.

Welfare and safety will remain the priority across all our face-to-face programmes in 2022, but we want to ensure that the student experience is high on the agenda too. Many young people have missed out on two years of being unable to travel, meet others from around the world, experience new cultures, see new sights and most importantly, they have missed out on lots of fun. We are committed to making the 2022 student experience a fun one, as well as keeping them safe!

We will continue to offer our exciting range of online and virtual reality programmes in 2022. We have spent a lot of time in the past two years developing these complimentary new additions to our portfolio and are delighted to see more students being able to learn English and meet people from all over the world with us. These programmes will also be available as a hybrid option for all students travelling to our centres in person who may want to extend their learning experiences.

We are all looking forward to 2022 with a renewed energy and enthusiasm and look forward to sharing the journey into a new year with you all.

CONTENTS

- 04 The Embassy Summer Journey
- 06 Keeping our students safe in 2022
- 09 Learning - inside & outside the classroom
- 10 A good night's sleep
- 11 Out & about
- 12 A week in the life
- 14 Embassy Summer – a world of choice
- 15 Quick reference guide
- 16 **Embassy Summer in the UK**
- 17 London, Mile End
- 18 London, Docklands
- 19 London, South Bank
- 20 London, UCL
- 21 Surrey, Kingswood (RHUL)
- 22 Surrey, Gatton Park
- 23 Brighton, University of Sussex
- 24 Brighton, Roedean
- 25 Cambridge
- 26 Oxford
- 27 Canterbury
- 28 The South West, Wellington School **NEW!**
- 30 **Embassy Summer in North America**
- 32 Los Angeles
- 33 New York
- 34 Boston
- 35 Montreal **NEW!**
- 36 Toronto
- 37 **Embassy Summer in Malta**
- 39 Malta - Host family & day programme
- 40 Malta - Campus Hub
- 41 Malta - Hotel Option
- 42 Other options with EC Young Learners
- 44 EC Study Tours
- 47 EC Virtual Young Learners
- 48 EC Academy



< THE EMBASSY SUMMER JOURNEY

Once upon a time...

Though we create “magic moments” Embassy Summer isn’t a “once upon a time” fairy tale. Embassy Summer is a legacy of experienced staff and inspired students and participants. Our story is one with a past, present, and future: It is our pleasure to share the Embassy Summer story with you!

History

We’ve come a long way and learnt every step of our journey!

Embassy Summer is a trusted **global leader** in full immersion junior language programmes with over 40 years of experience in delivering dynamic experiences to students from around the world. We work with global universities, colleges and schools. We’ve navigated through many years of challenges and joy. This year Embassy Summer will operate 18 summer schools with our university partner locations in 4 countries.

Identity

Your summer experience matters!

Embassy Summer courses are designed to ensure that students make the most of their time with us. Not only do our students get to improve their English or French, but we also support their personal development and provide them with lots of opportunities to make new international friends.

We are experienced at delivering outstanding programmes, with a 99% student satisfaction rate based on student feedback. We also have a truly global nationality mix with students coming to our centres from over 85 different countries.



Award-winning

We have been recognised with the ST Star Award for juniors in 2015, the silver award for Best Educational Product in the British Youth Travel Awards 2018 and short-listed for the ST Star Award 2019



Reality

**Join Embassy Summer -
your adventure awaits!**

Culture, fun, education, language - these are the elements that give Embassy Summer its magic!

Join Embassy Summer for a physical adventure such as swimming or hiking, or a social adventure such as a games evening, a disco or sightseeing with new friends. Our students explore some of the most iconic and historic locations in the world- all whilst being immersed in English or French.



Amazing locations

**Choose from 18
amazing locations...**

With several new centre options for 2022, students have the opportunity to learn side by side, with their new friends, in a variety of locations around the world, ranging from small seaside towns to large cities. For both frequent travellers as well as those exploring 'abroad' for the first time, all of our students have the opportunity to experience the beauty of the place they choose to travel to.



We deliver

We deliver rewarding English language programmes for young learners, providing a truly life-changing experience for students from all over the world. We are a trusted and globally accredited provider with a 40+ year track record.

Hope to see you soon!

< KEEPING OUR STUDENTS SAFE IN 2022

We place the highest priority on the welfare and safety of our students and provide a high standard of care and supervision across all of our programmes and in all of our global destinations.



Experienced Head Office Team

Our experienced head office team is responsible for training staff across all our centres to ensure they operate at the highest standard and in line with local accreditation standards. Each of our centres has an average staff ratio of 1:10 and at least one dedicated person responsible for student welfare.

We care 24/7

We care for our students 24/7, with supervision after class, after activities and during excursions. We also have dedicated night supervisors in our centres to make sure we provide 24-hour support to our students. If any medical issues arise we have trained first aiders on-site and, if required, our staff have established links with local doctors, dentists and hospitals.

Nurturing and Homely Environment

To make sure individual students are happy and well-cared for we provide guardians to ensure that they are having a fun and safe experience in our centres. Centres with younger students have house parents staying in the accommodation residences to provide a nurturing and homely environment.

Dedicated Support

We provide dedicated support for our students throughout their stay, including a full induction and orientation on arrival, where all students are issued with identity cards which contain our emergency telephone details.



The World Travel & Tourism Council (WTTTC) SafeTravels stamp enables students to recognise schools around the world which have adopted health and hygiene global standardised protocols – so they can experience 'Safe Travels'.

Since the emergence of Covid-19 in January 2020, our team have worked continuously to update operating procedures and work with our host partners to ensure our students, groups leaders and staff remain safe and well.

We have followed global Government guidelines in each of the destinations we operate in alongside implementing additional safety measures in all of our centres and will continue to do so in 2022. We have learnt a lot through operating face to face summer programmes in both 2020 and 2021 and now take that knowledge and experience in to our 2022 operation.

Operating alongside Covid-19

All staff are trained to deliver fun and effective summer school programmes. we now also include specific training on how to ensure students have fun and remain safe whilst working with the additional risk of Covid-19.

We have introduced a designated Covid-Coordinator role for each of our locations. This person is responsible for overseeing, where applicable, all Covid-19 testing requirements, possible isolation, and medical assistance and work in coordination with our existing Welfare Managers and first aiders on site.

We have also implemented Covid-19 risk assessments for each of our locations, and procedures for managing positive and close contact cases. Whilst these new procedures are in place, we very much hope not to have to use them during the summer. However our experience has shown that, where Covid-19 is concerned, you can never be too prepared!

Policies that may be introduced should the risk assessments dictate the need:

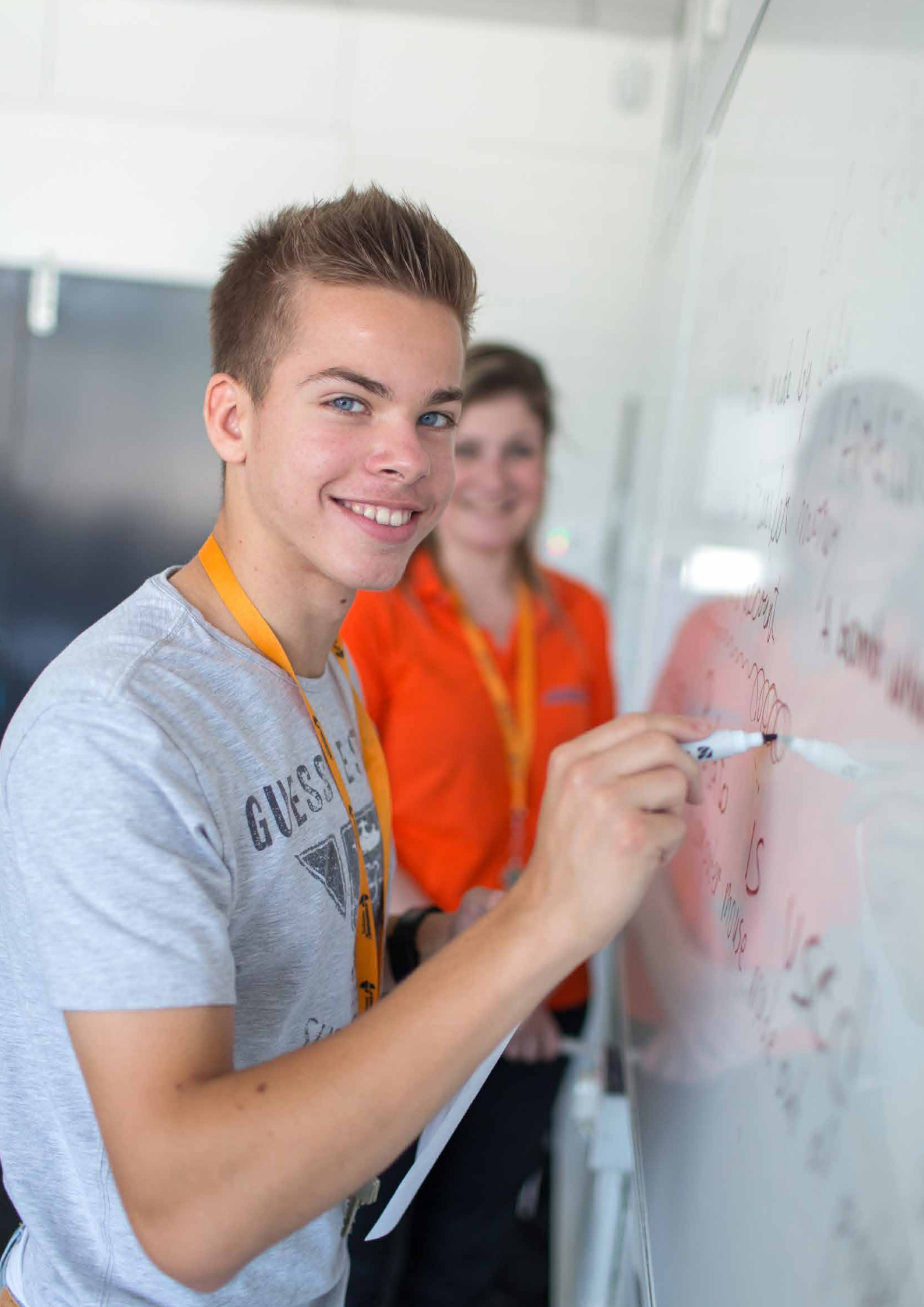
We have a full list of measures that we can introduce depending on the level of risk to our students, groups leaders or staff at any time during the operation in each of our destinations, and in accordance with ongoing Government guidelines. Below is a limited selection of possible measures but as we recognise that Covid-19 remains the biggest concern to our students and their parents please do not hesitate to contact us for further information on how we are preparing for summer 2022!

Whilst some measures below will only be implemented if deemed necessary, all of our centres will see increased cleaning of all of our communal areas and high touchpoint areas, such as door handles for example, and hand sanitisers will be stationed throughout our schools. We may also ask students with general coughs and colds to wear a mask to protect others whilst staying with us.

A SAMPLE OF OUR COVID-19 MEASURES:

- Student temperatures taken every day
- Classroom furniture arranged to minimise risk of transmission and ensure social distancing is achievable
- Face coverings, face masks and face shields worn in line with all local Government Guidelines
- All students will remain in the same class and same seat to ensure quick tracing is available
- Covid-Secure programmes readily available for all our locations should they be necessary
- Regular cleaning of all sports equipment before, after and during activity sessions
- Additional deep cleaning in all our host partner restaurants, cafeterias, and accommodation
- 'Bubble' system implemented if cases / risk is high to minimise ongoing transmission
- Regular, vigorous cleaning practices will ensure our centres are as safe as possible for you
- Embassy Summer will follow local protocols for any staff or students who may show symptoms of, or test positive for, COVID-19





< LEARNING INSIDE & OUTSIDE THE CLASSROOM

Here at Embassy, we see language as a skill, less of a dry academic subject where the teacher explains structures and students complete exercises and more of an opportunity to improve confidence in communicating and to practise speaking.

Immersion in an English or French-speaking environment

Many of the students that come on our courses love learning languages and want to immerse themselves in an English or French-speaking environment, but we also have students who struggle with the language and want to leave with a basic operational level, we cater for both.

Student-centred lessons

It's important for us that students feel comfortable in lessons, that they are placed in classes with a good nationality mix wherever possible, which encourages them to use the language, to share opinions and discuss relevant topics whilst completing personalized communicative tasks. We spend time training and supporting teachers so they can run student-centred lessons that are fun and can give valuable feedback to students which will help them improve their level of spoken English or French and allow them to return home with added confidence and a higher level of proficiency.

Online placement test

Whenever possible, we attempt to place students before arrival with an online placement test before they arrive at centre. Embassy Summer teachers are aware of the activities and excursions students are enjoying outside of the classroom and bring the outside class experience and vocabulary into their learning environment frequently.

Real conversations

A typical Embassy Summer lesson will start with a speaking activity which will allow students to express their opinions (students might be asked to compare things or recommend something, ask for opinions, summarise a text or solve a problem). Depending on their level the teacher might pre-teach some functional phrases or highlight them during a feedback stage, the focus is to provide a platform for real conversation on engaging topics and for the teacher to help them to improve. All our teachers receive training before they start and are supported by our academic team throughout the summer to enable them to deliver practical lessons with clear learning outcomes that improve students' communicative level.

Our Language Programme

The classroom is at the heart of an Embassy Summer centre. Lessons are student-centred and encourage the development of relevant language skills

- Engaging classrooms with a positive learning atmosphere
- 15 Hours (20 x 45 minute) of lessons per week, morning or afternoon
- Taught by qualified English teachers
- Student ratios of 17 students per class
- We teach all levels, from beginner to advanced
- All courses include learning resources, materials appropriate to students age and level, and an end of course report and course certificate.



< A GOOD NIGHT'S SLEEP

With so much to do during the daytime it is important that all of our students get a good night's sleep. Embassy Summer offers a wide range of residential options all of which are risk assessed to ensure the ultimate safety for our students.

The majority of our centres are residential, offering students the opportunity to experience life on a college campus or in a boarding school environment. For our younger students we recommend our boarding schools, these offer more shared room options and a more nurturing environment. For our teenagers the choice is much wider. Many of our centres offer single rooms with their own ensuite facilities, in Malta we also use hotel accommodation with up to 4 students sharing a room. Outside of their bedroom students can also relax in the shared common rooms available on campus.

We offer host family options in some of our centres (please see our centre pages for more details on where family stay is available). Our families are all checked and inspected regularly and in the UK we work with a dedicated and accredited host family provider. Most of our families have hosted our students for many years.

We have guardians for our individual students, house parents in our boarding houses and residential staff in all of our locations, as well as night managers to ensure everyone is safe and well throughout the night!

All of our accommodation is cleaned regularly and we provide linen in all centres. Towels are provided in some locations but in general we recommend that students bring their own towel.

All of our centres offer full board accommodation and we make sure that our students have the right nutritional balance. We provide suitable meals to help them stay healthy, focused and energised. All our programmes include a variety of hot and cold meal items, and we can cater for most dietary requirements.



< OUT & ABOUT

A large part of a summer school experience is exploring the local towns, larger cities and famous attractions with new friends!

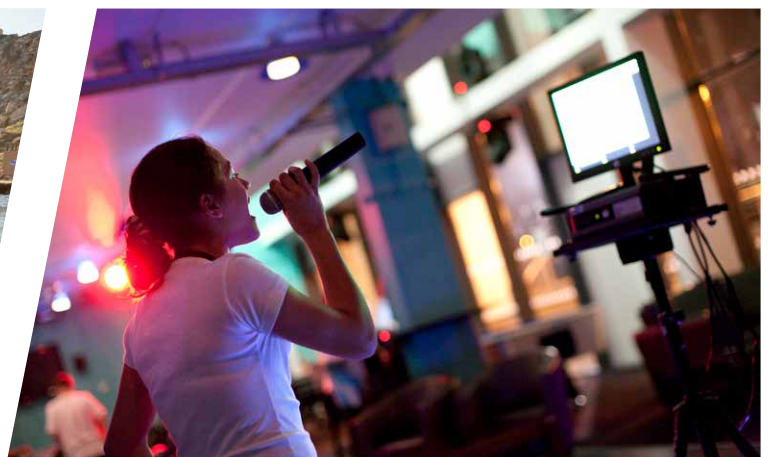
Two thirds of the student experience is actually spent out and about, away from the classroom and therefore Embassy Summer has spent many years tailoring its programmes in each location to maximise the whole student adventure. We recognise that the excursions and activities are as important as the English language classes.

All of our programmes include a variety of full day and half day excursions, and students also have the opportunity to take part in additional trips (known as optional excursions) if they want to explore the locality further.

For full details on the excursions available from each of our centres please visit the specific centre page.

When not out on excursions, we also offer our students a wide range of activities to enjoy. These activities vary differently from centre to centre and are very much dependent on the facilities available to us, but in general we always try to include a range of sporting and non-sporting events as well as larger, whole school, evening activities such as discos, beach barbeques and cultural quizzes.

Our activity programme is designed to ensure that students maximise their opportunities to mix and meet with other students from all over the world in a less formal setting than a classroom, that they continue to use their English (or French if in Montreal) language outside of the classroom and that, most importantly they remain healthy, happy and have a fun experience!



< A WEEK IN THE LIFE

Explore a typical week for a student at the University of Sussex, Brighton.

SUNDAY



MORNING

Students arrive to our Brighton centre at the University of Sussex, they get to their rooms, unpack and get ready for an unforgettable experience!

AFTERNOON

Staff organise welcome games or treasure hunts so students can get to know each other and the centre.

EVENING

MONDAY



MORNING

Student induction held by the centre manager and after that it's time for some testing.

AFTERNOON

Get orientated with the campus and the local community. The University is big so it's good for students to know their way around, where to find the shop, the canteen and the cafés.

EVENING

It's disco time! All students in the centre get together for an evening of fun.

THURSDAY



MORNING

Lessons - by this time students usually start to become a bit more confident and the teacher might arrange a debate.

AFTERNOON

First visit to the city centre where students get to explore the famous pier and the Sea Life Centre.

EVENING

Murder Mystery - A fun activity where our students need to work together to solve a case.

FRIDAY



MORNING

Lessons - teachers might ask students to do a quick presentation about the place they'll be visiting on the weekend.

AFTERNOON

Students can choose between playing volleyball or doing a dance workshop.

EVENING

Tonight is the night for a talent show. This is a very popular activity that gets students into that Friday feeling!

TUESDAY



MORNING

First real lesson, students are divided into their classes based on their age, level of English and nationality (to ensure a great nationality mix).

AFTERNOON

It's time to leave the centre and explore. A trip to Arundel Castle or Brighton is on the agenda.

EVENING

We arrange on-site activities such as 'the Great Egg Drop' and a fun photo scavenger hunt.

WEDNESDAY



MORNING

By lesson two, students are getting more familiar with their learning materials.

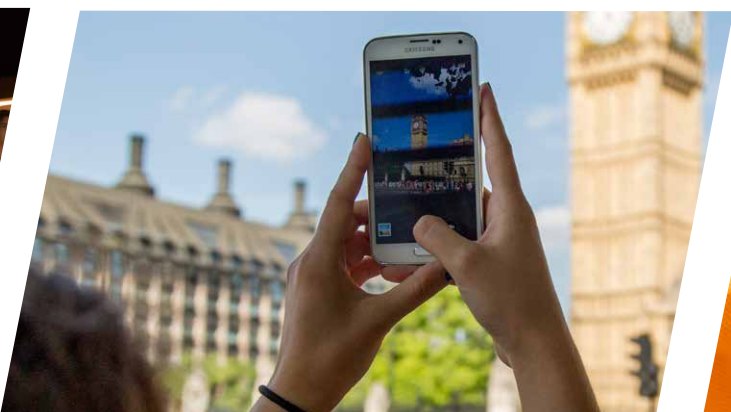
AFTERNOON

It's time for some sports; mini Olympics and a football tournament is on the schedule.

EVENING

Who doesn't love karaoke? It's our students' time to shine!

SATURDAY



MORNING

Wake up, have breakfast and get ready for London. Students explore Westminster and the National Gallery.

AFTERNOON

EVENING

Students are usually tired after a long day out and about, and what could be better than a film night?

SUNDAY



MORNING

Students can choose to stay at the centre to take part in organised activities and chill-out, or they can choose to come on our optional trip to Thorpe Park.

AFTERNOON

EVENING

New groups of students have just arrived to the centre and everyone gets together for welcome activities and games.

< EMBASSY SUMMER, A WORLD OF CHOICE



< QUICK REFERENCE GUIDE

Location	Centre	Centre size	Accommodation	Age range	Dates	Included full-day excursions
----------	--------	-------------	---------------	-----------	-------	------------------------------

EMBASSY SUMMER IN THE UK

London, Mile End	Queen Mary University of London	Medium	Single en-suite rooms	12-17, 18-19* *18 & 19 yr olds accepted as part of a group with a leader	19 Jun-14 Aug	Canterbury, Cambridge and Brighton
London, Docklands	University of East London	Large	Single en-suite rooms	11-17, 18-19* *18 & 19 yr olds accepted as part of a group with a leader	19 Jun-14 Aug	Canterbury, Cambridge and Brighton
London, South Bank	London South Bank University	Large	Single en-suite rooms	13-17, 18-19* *18 & 19 yr olds accepted as part of a group with a leader	26 Jun-14 Aug	Canterbury, Cambridge and Brighton
London, UCL	University College London	Large	Standard single rooms	13-17 Juniors 18-25 Adults	03 Jul-21 Aug	Canterbury, Cambridge and Brighton
Surrey, Kingswood (RHUL)	Royal Holloway University	Medium	Single en-suite or standard single rooms	10-17	26 Jun-07 Aug	London, Oxford, Cambridge and Brighton
Surrey, Gatton Park	Royal Alexandra and Albert School	Medium	Twin/Triple & Multi bedded Standard rooms	8-17	10 Jul-07 Aug	London and Oxford
Brighton. University of Sussex	University of Sussex	Large	Single en-suite rooms	11-17, 18-19* *18 & 19 yr olds accepted as part of a group with a leader	26 Jun-14 Aug	London, Canterbury and Windsor Castle
Brighton, Roedean	Roedean	Large	Single, twins and multi-bed dorms	9- 17 Roedean	03 Jul-14 Aug	Brighton, Arundel Castle and London
Cambridge	Abbey College, Tripos Court	Medium	Homestay accommodation	13-17	03 Jul -14 Aug	London, Oxford and Warwick Castle
			Single en-suite	11-17, 18-19* *18 & 19 yr olds accepted as part of a group with a leader		
Oxford	Oxford Brookes University	Medium	Single en-suite & standard rooms	13-19	26 Jun-14 Aug	London, Oxford
Canterbury	University of Kent	Medium	Single en-suite & standard rooms	11-17, 18-19* *18 & 19 yr olds accepted as part of a group with a leader	26 Jun-07 Aug	London, Brighton and Cambridge
The South West	Wellington School	Small	Multi-bedded standard rooms	07-15	10 Jul-14 Aug	London, Brighton and Oxford

EMBASSY SUMMER IN NORTH AMERICA

Los Angeles	California State University	Large	Standard twin rooms & twin en-suite rooms	10-18	12 Jun-07 Aug	Santa Monica, Hollywood with Beverly Hills and Santa Barbara.
New York	Brooklyn	Medium	Standard triple rooms or twin, triple or quad en-suite rooms	12-18	19 Jun-31 Jul	Coney Island and Brighton beach
Boston	Tufts University	Medium	Single, Twin, Triple Standard rooms	13-18	26 Jun-31 Jul	Charles River Walk, Newport Rhode Island and downtown Boston
Montreal	McGill University	Large	Standard twin rooms or Homestay	12-18	03 Jul-31 Jul	Quebec City, Ottawa, Mont-Tremblant
Toronto	York University	Large	Single or en-suite rooms	12-18	10 Jul-07 Aug	Niagara Falls, Downtown Toronto with CN Tower and Shopping/beach trip

EMBASSY SUMMER IN MALTA

Malta	St. Martins College	Large	Multi bedded rooms Homestay	12 - 18* *18 year olds must be placed in Hotel only	26 Jun-28 Aug	Sandy beach and a North of Malta tour including multiple stops.
--------------	---------------------	-------	-----------------------------	--	---------------	---

< EMBASSY SUMMER IN THE UK

The UK continues to be the world's number one English language learning destination. There are so many great cities and towns to choose from that choosing where to stay is never easy!

Embassy Summer has its widest range of centres in the UK, all of which offer the possibility to spend time in its capital city, London. From the hustle and bustle of the centre of London to the tranquillity of the beautiful

South West of England, we offer somewhere for everyone.

We have been delivering successful summer school experiences in the UK for almost half a century, our locations reflect the most popular destinations that students like to travel to. Our centres allow students to explore the many exciting sights and sounds the wonderful UK has to offer.





< LONDON, MILE END

Our centre is located on the large, modern city campus of Queen Mary University of London, just a short journey on the tube from central London in zone 2. Students stay in the halls of residence in the student village, which has both shops and a sports hall which students use during their programme.



WI-FI



ATM



SHOP
ON-SITE



SPORTS
FACILITIES



MEDIUM
CENTRE



QUEEN MARY UNIVERSITY OF LONDON

- City centre location
- Zone 2, 20 min by tube to central London



19 JUN – 14 AUG

AGE RANGE: 12–19*

*18 & 19 yr olds
accepted as part of a
group with a leader

RESIDENCE

QUEEN MARY UNIVERSITY OF LONDON	
Room Type	Single room with en-suite
Bathroom Ratio	1:1 students
Room set up	Arranged in flats of 5-9 with communal kitchen
What's in a room	Single bed, wardrobe, desk, chair
Common room	No, but there are common spaces at the campus
Cleaning	Weekly
Linen cleaning	Changed weekly
Towels	Students bring their own towels
Laundry	Available on campus, small fee
Meals	Served in on-site canteen, packed lunch at weekends
Wi-Fi	Yes
Distance to classes	On campus



CENTRE GUIDES AND FULL SAMPLE PROGRAMME

Full programmes for the duration of your stay are available on our Centre Guides.

[CLICK HERE](#)

	SUNDAY	MONDAY	TUESDAY	WEDNESDAY	THURSDAY	FRIDAY	SATURDAY
Morning		Testing & Induction or Lessons	Lessons	Lessons	Lessons	Lessons	
Afternoon	Arrivals/ or London and Camden Market or optional trip: Thorpe Park	Westminster or other London walking tour	London British Museum	Local walk or optional visit: Madame Tussauds/ Tower of London/ London eye	Tate Modern	River Thames Cruise	Full-day excursion: Cambridge with Walking Tour + King's College
Evening	Indoor sports/ welcome games	Welcome Party	Indoor sports or treasure hunt	Karaoke	Indoor sports or late night shopping at Westfield	Disco	Film night
	Local walk		Egg drop	Optional bowling, cinema or musical	Optional activity: cable car experience		Quiz



< LONDON, DOCKLANDS

Our centre is located at the Docklands Campus of the University of East London, which is located next to the River Thames opposite London City Airport. From the modern residence buildings students will get a great view of London's iconic skyline and easy access to central London when you want to explore the city.



WI-FI



ATM



SHOP
ON-SITE



SPORTS
FACILITIES



LARGE
CENTRE



UNIVERSITY OF EAST LONDON

- Suburban location
- 35 min by tube/DLR to central London



19 JUN – 14 AUG

AGE RANGE: 11–19*

*18 & 19 yr olds accepted as part of a group with a leader

RESIDENCE

UNIVERSITY OF EAST LONDON	
Room Type	Single room with en-suite
Bathroom Ratio	1:1 students
Room set up	Arranged in flats of 4-6 with communal kitchen
What's in a room	Single bed, wardrobe, desk, chair
Common room	Yes
Cleaning	Weekly
Linen cleaning	Changed weekly
Towels	Students bring their own towels
Laundry	Located at Longbridge house, small fee
Meals	Served in on-site canteen, packed lunch at weekends
Wi-Fi	Yes
Distance to classes	On campus



CENTRE GUIDES AND FULL SAMPLE PROGRAMME

Full programmes for the duration of your stay are available on our Centre Guides.

[CLICK HERE](#)

	SUNDAY	MONDAY	TUESDAY	WEDNESDAY	THURSDAY	FRIDAY	SATURDAY
Morning	Arrivals/on-site activities	Testing & Induction or Lessons	Lessons	Lessons	Lessons	Lessons	Full-day excursion: Cambridge with Walking Tour and entrance to King's College or Punting
Afternoon		London walking tour	London British Museum	London Covent Garden shopping	Tower of London	Greenwich + Maritime Museum or optional activity: London Dungeon or Madame Tussauds	
Evening	Welcome Games and Quiz	Disco	The Great Egg Drop!	Karaoke	Dodgeball	Trashion show	Film night
			Optional activity: London Eye		Optional activity: London Musical		



< LONDON, SOUTH BANK

Our centre is located on the campus of South Bank University, only a short walk from attractions such as the London Eye and the London Dungeon. The location could not be more central! Students stay at McLaren House just a couple of minutes from the main university building.



WI-FI



ATM



SHOP
ON-SITE



SPORTS
FACILITIES



LARGE
CENTRE



SOUTH BANK UNIVERSITY

- City centre location
- Zone 1, in city centre



26 JUN – 14 AUG

AGE RANGE: **13–17** Juniors
18–21 Adults

RESIDENCE

SOUTH BANK UNIVERSITY - MCLAREN HOUSE

Room Type	Single room with en-suite
Bathroom Ratio	1:1 students
Room set up	Arranged in flats of 5-8 with communal kitchen
What's in a room	Single bed, wardrobe, desk, chair
Common room	Yes
Cleaning	Weekly
Linen cleaning	Changed weekly
Towels	Students bring their own towels
Laundry	Available on campus, small fee
Meals	Served in on-site canteen, packed lunch at weekends
Wi-Fi	Yes
Distance to classes	4 min walk



DAY PROGRAMME

A great addition to a family holiday, enjoy London plus English language learning in a safe and nurturing environment. Each day is filled with great lessons and lots of exciting activities, without accommodation.

CENTRE GUIDES AND FULL SAMPLE PROGRAMME

Full programmes for the duration of your stay are available on our Centre Guides.

[CLICK HERE](#)

	SUNDAY	MONDAY	TUESDAY	WEDNESDAY	THURSDAY	FRIDAY	SATURDAY
Morning		Testing & Induction or Lessons	Lessons	Lessons	Lessons	Lessons	
Afternoon	Arrivals/Visit to Camden market	Westminster or other London walking tour	London National Gallery	Indoor sports or local activities	Visit to Tower Bridge Experience	Museum of London or optional Madame Tussauds/ London Eye/ Tower of London	Full-day excursion: Brighton with walking tour and visit to Sea Life Centre
Evening	Sports in park	Disco	Quiz	Karaoke	Late night shopping. Westfield or Oxford street	Disco	London-by-night walk
	Welcome and team games		Optional activity: Cinema, Bowling or Musical		Film night		Talent show



< LONDON, UCL

Our centre is located on the city campus of world-renowned University College London, in the lively area of Bloomsbury, close to iconic shopping areas such as Oxford Street and Covent Garden, right in the heart of London. Junior students aged 13-17 and adult students 18-25 can be in the same group and travel together. However, they will be accommodated in separate halls, taught in classes appropriate for their age range and have separate activities.

RESIDENCE

CAMPBELL HALL	
Room Type	Majority standard single rooms, with some twin rooms
Bathroom Ratio	1:5 students
Room set up	Rooms are spread out on different floors in both residences
What's in a room	Single bed, wardrobe, desk, chair
Common room	Yes
Cleaning	Weekly
Linen cleaning	Changed weekly
Towels	Students bring their own towels
Laundry	Available on campus, small fee
Meals	Served in on-site canteen, packed lunch at weekends
Wi-Fi	Yes
Distance to classes	A short walk, dependent on residence



WI-FI



ATM



SPORTS
FACILITIES



LARGE
CENTRE



UNIVERSITY COLLEGE
LONDON

- City centre location
- Zone 1, in city centre



10 JUL - 21 AUG

AGE RANGE: 12-18



CENTRE GUIDES AND FULL SAMPLE PROGRAMME

Full programmes for the duration of your stay are available on our Centre Guides.

[CLICK HERE](#)

	SUNDAY	MONDAY	TUESDAY	WEDNESDAY	THURSDAY	FRIDAY	SATURDAY
Morning		Testing & Induction or Lessons	Lessons	Lessons	Lessons	Lessons	
Afternoon	Arrivals/Visit to Camden market	London Walking Tour	London National Gallery	Science Museum	Borough market or optional activity: Tower of London London Eye Madame Tussauds	Visit to the Tower Bridge Experience	Full-day excursion: Canterbury with walking tour and visit to the Cathedral
Evening	Sports in Regent's Park	Welcome disco	Scavenger Hunt	Karaoke	Late night shopping - Westfield or Oxford St	Disco	London-by-night walk
	Welcome and team games	18+ London night market	Optional activity: Cinema or Bowling	18+ Scary Ghost walk	Optional activity: Musical	18+ China Town by Night	Film night



< KINGSWOOD, ROYAL HOLLOWAY

Our centre is located on the Kingswood Hall campus of Royal Holloway University of London, surrounded by beautiful countryside close to Royal Windsor and easy access to London Heathrow Airport. The campus is closed and very secure, ideal for the younger students. Outdoor sports take place on a local playing field next to the campus and two common rooms provide space for a variety of indoor activities and for students to relax.

RESIDENCE

KINGSWOOD ROYAL HOLLOWAY UNIVERSITY	
Room Type	Single room with en-suite
Bathroom Ratio	1:1 students
Room set up	All rooms are in the same residence with shared kitchen
What's in a room	Single bed, wardrobe, desk, chair
Common room	Yes
Cleaning	Rooms weekly, common rooms and bathrooms daily
Linen cleaning	Changed weekly
Towels	Students bring their own towels
Laundry	Available on campus, small fee
Meals	Served in on-site canteen, packed lunch at weekends
Wi-Fi	Yes
Distance to classes	On campus



WI-FI



SHOP
ON-SITE



MEDIUM
CENTRE



**KINGSWOOD ROYAL
HOLLOWAY UNIVERSITY**

- Suburban location
- 1 hour by coach to central London



26 JUN - 07 AUG

AGE RANGE: 10-17



DAY PROGRAMME

A great addition to a family holiday, plus English language learning in a safe and nurturing environment. Each day is filled with great lessons and lots of exciting activities, without accommodation.

CENTRE GUIDES AND FULL SAMPLE PROGRAMME

Full programmes for the duration of your stay are available on our Centre Guides.

[CLICK HERE](#)

	SUNDAY	MONDAY	TUESDAY	WEDNESDAY	THURSDAY	FRIDAY	SATURDAY
Morning	Arrivals/on-site activities	Testing & Induction or Lessons	Lessons	Full-day trip to London with Westminster walking tour & visit to the National Gallery	Lessons	Lessons	Full-day excursion: Oxford with Walking Tour and College Entrance
Afternoon		Egham town walk	Lessons		Half-day trip to Kew Gardens	Mini Olympics Team Events	
Evening	Welcome games and quiz	Capture the flag	Kahoot quiz night	X-Factor karaoke	Big Game Bingo	Murder Mystery Night	Film night
		Lip dub video making	Culture club		Photo scavenger hunt		



< SURREY, GATTON PARK

Our centre is located at the stunning Royal Alexandra and Albert School in a charming, rural setting about an hour's drive from central London and close to London Gatwick Airport. Students have access to excellent facilities such as a sports hall, an indoor swimming pool, extensive playing fields, astro pitches and several tennis courts. It is an ideal location for our younger learners on a safe and secure campus.

RESIDENCE

ROYAL ALEXANDRA AND ALBERT SCHOOL		
Room Type	Multi bedded dormitory style rooms ranging from 2 - 6 students per room.	Twin rooms with en-suite
Bathroom Ratio	1:5 students	1:2 students
Room set up	1 large bathroom with several showers and toilets in each boarding house	Located in a separate annex
What's in a room	Single, bunk or cabin bed, wardrobe, desk, chair, lamp	
Common room	Yes, large comfortable room in all boarding houses with social spaces, TV's, table tennis etc	
Cleaning	Rooms weekly, common rooms and bathrooms daily	
Linen cleaning	Changed weekly	
Towels	Students bring their own towels	
Laundry	Available in each boarding house, free of charge	
Meals	Served in on-site canteen, packed lunch at weekends	
Wi-Fi	Yes	
Distance to classes	On campus	



WI-FI



SHOP
ON-SITE



SPORTS
FACILITIES



MEDIUM
CENTRE



ROYAL ALEXANDRA AND ALBERT SCHOOL

- Countryside location
- 1 hour by coach to central London



10 JUL - 07 AUG

AGE RANGE: 8-17



CENTRE GUIDES AND FULL SAMPLE PROGRAMME

Full programmes for the duration of your stay are available on our Centre Guides.

[CLICK HERE](#)

	SUNDAY	MONDAY	TUESDAY	WEDNESDAY	THURSDAY	FRIDAY	SATURDAY
Morning	Arrivals/ on-site activities	Testing & Induction or Lessons	Lessons	Full-day excursion: London with Westminster Walking Tour and National Gallery	Lessons	Lessons	Full-day excursion: Oxford with Walking Tour and College Visit
Afternoon		Redhill Town Orientation Walk	Lessons		Half-day trip to Kew Gardens	School Assembly Disco Prep & Mini Olympics	
Evening	Welcome games and quiz	Eurovision Karaoke	Photo scavenger hunt	Kahoot quiz	Lip Dub	Summer Party Disco	Film night
			Swimming		Dodgeball & Basketball		



< BRIGHTON, UNIVERSITY OF SUSSEX



WI-FI



ATM



SHOP
ON-SITE



SPORTS
FACILITIES



LARGE
CENTRE

Brighton is a popular seaside city with beautiful Georgian architecture, great beaches, hip cafés and trendy shops. Known as 'London by the sea', Brighton is a multi-cultural city that welcomes students of all nationalities in a warm and friendly way. Our centre is located on the campus of the well-known University of Sussex, only a short bus or train journey from the city centre.

RESIDENCE

UNIVERSITY OF SUSSEX	
Room Type	Single room with en-suite
Bathroom Ratio	1:1 students
Room set up	Flats of 4-6 rooms
What's in a room	Single bed, wardrobe, desk, chair
Common room	Yes
Cleaning	Weekly
Linen cleaning	Changed weekly
Towels	Students bring their own towels
Laundry	Available in residence
Meals	Served in on-site canteen, packed lunch at weekends
Wi-Fi	Yes
Distance to classes	On campus



UNIVERSITY OF SUSSEX

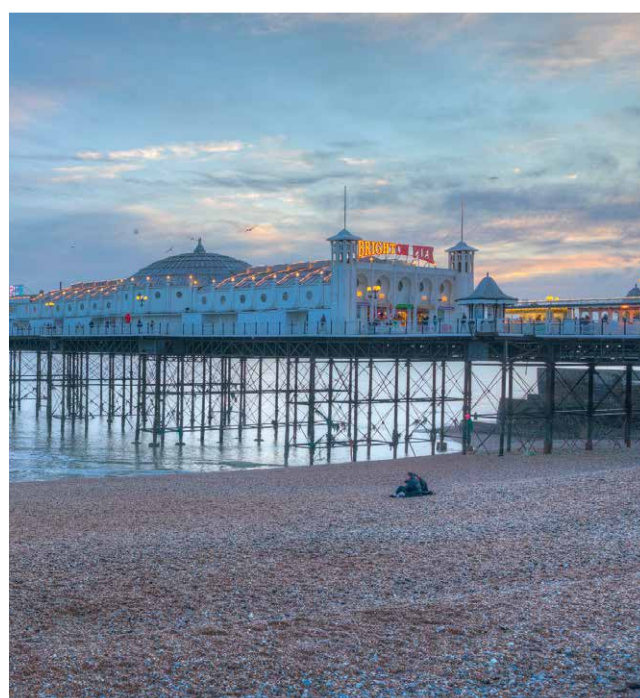
- Suburban/Central location
- 15 min by train to central Brighton



26 JUN - 14 AUG

AGE RANGE: 11-19*

*18 & 19 yr olds accepted as part of a group with a leader



CENTRE GUIDES AND FULL SAMPLE PROGRAMME

Full programmes for the duration of your stay are available on our Centre Guides.

[CLICK HERE](#)

	SUNDAY	MONDAY	TUESDAY	WEDNESDAY	THURSDAY	FRIDAY	SATURDAY
Morning		Testing & Induction or Lessons	Lessons	Lessons	Lessons	Lessons	
Afternoon	Arrivals/on-site Activities	Site and local orientation	Half-day trip to Arundel Castle	Mini Olympics	Local visit to Brighton with Sea Life Centre	Volleyball tournament	Full-day trip to London with Westminster walking tour and National Gallery visit
				Lip Dub video preparation		Dance workshop	
Evening	Welcome Games and Quiz	Disco	Photo scavenger hunt	Kahoot quiz	Murder Mystery	Trashion Show	Film night
			Culture club		Lip Dub Presentation		



< BRIGHTON, ROEDEAN

Originally founded in 1885, Roedean is one of the most prestigious and well know independent boarding schools in the UK. The school offers excellent facilities, including 40 acres of playing fields and space for several activities. Students' accommodation is based in the boarding houses which consists of mostly single rooms and some twin and multi-bed rooms.

ACCOMMODATION

ROEDEAN	
Room Type	Single (for girls), twins and multi-bed dorms (for boys)
Bathroom Ratio	1:5 students
Room set up	Traditional UK college dormitory rooms
What's in a room	Bed, wardrobe, drawers, desk, chair
Common room	Yes
Cleaning	Weekly
Linen cleaning	Changed weekly
Towels	Students bring their own towels
Laundry	Available on campus/homestay
Meals	Served in on-site dining hall, packed lunch at weekends
Wi-Fi	Yes
Distance to classes	On campus



WI-FI



SWIMMING
POOL



SHOP
ON-SITE



MEDIUM
CENTRE



ROEDEAN

- Suburban location
- 30 min by public transport to central Brighton



03 JUL – 14 AUG

AGE RANGE:

9–17 (Residential)



CENTRE GUIDES AND FULL SAMPLE PROGRAMME

Full programmes for the duration of your stay are available on our Centre Guides.

[CLICK HERE](#)

	SUNDAY	MONDAY	TUESDAY	WEDNESDAY	THURSDAY	FRIDAY	SATURDAY
Morning	Arrivals & Orientation Tour	Testing & Induction or Lessons	Lessons	Lessons	Lessons	Lessons	Full-day trip to London with Westminster Walking Tour and National Gallery Visit
Afternoon		Brighton Walking Tour	Football Ultimate Frisbee Rounders	On Site Activities	Half day trip to Arundel Castle	Hunger Games OR Optional - Brighton I360	
Evening	Welcome Night & Team Building	Karaoke Night	Indoor sports or treasure hunt	Talent Show	Casino Night	Disco night	Kahoot Quiz
			Egg drop				



< CAMBRIDGE

Cambridge is world famous for its historic colleges and beautiful architecture. Our centre is located in the modern Abbey College a short walk from the city centre. Students have the choice to stay in homestay or ensuite residential accommodation next to Abbey College. The college is in a modern part of the prestigious city centre close to the University Botanic Gardens, Cambridge Central Railway station and an array of shops and leisure facilities.



WI-FI



ATM



SPORTS
FACILITIES



MEDIUM
CENTRE



ABBEY COLLEGE

- City centre location
- 20 min by walk



03 JUL - 14 AUG

AGE RANGE:

11-19 (Residential)
18 and 19 year olds
accepted as part of a group
with a leader

13-17 (Host Family)

ACCOMMODATION

	TRIPOS COURT	HOMESTAY
Room Type	Single	Twin/Triple
Bathroom Ratio	Ensuite	Shared
Room set up	6-9 rooms per flats with shared kitchen/common space	Shared with family
What's in a room	Bed, chest of drawers, wardrobe, desk, lamp	Bed, wardrobe, desk, lamp
Common room	Yes	Yes, shared with family
Cleaning	Bedrooms weekly, common areas daily	Weekly
Linen cleaning	Changed weekly	
Towels	Students bring their own towels	Provided
Laundry	Available on campus/homestay (small fee)	
Meals	Meals served in the school dining room at Abbey College with packed lunches provided at weekends and on full day trips	Breakfast and dinner are provided by the host family. Lunch is provided at school with packed lunches at weekends and on full day trips
Wi-Fi	Yes	Yes
Distance to classes	5 min walk	Up to 50 mins



DAY PROGRAMME

A great addition to a family holiday, enjoy Cambridge plus English language learning in a safe and nurturing environment. Each day is filled with great lessons and lots of exciting activities, without accommodation.

CENTRE GUIDES AND FULL SAMPLE PROGRAMME

Full programmes for the duration of your stay are available on our Centre Guides.

[CLICK HERE](#)

	SUNDAY	MONDAY	TUESDAY	WEDNESDAY	THURSDAY	FRIDAY	SATURDAY
Morning	Arrivals/on-site Activities or optional trip to Norwich	Walking tour of Cambridge	Quidditch & Basketball	Punting on the River Cam	Full Day Trip to London with Westminster Walking Tour & Covent Garden Shopping	Lessons	Full day trip to Oxford, walking tour and a College visit
Afternoon		Testing & Induction or Lessons	Lessons	Lessons		Lessons	
Evening	Welcome Games and Team Building*	Welcome Party	Kahoot Quiz Night	Olympic Sports Night	Karaoke & Disco	Egg Drop Challenge	Film night



< OXFORD

Our centre is located on the Headington campus in Oxford Brookes University, within walking distance from the city centre and with plenty of outdoor space. Oxford is mainly known for its universities, museums and architecture which our students will get to explore during their stay. Students can also enjoy great on-site campus facilities such as a sports hall, modern dining hall and several shops.



WI-FI



ATM



SHOP
ON-SITE



SPORTS
FACILITIES



MEDIUM
CENTRE



OXFORD BROOKES UNIVERSITY – HEADINGTON CAMPUS

- Suburban location
- 20 min walking distance to central Oxford



26 JUN – 14 AUG

AGE RANGE: 11–19*

*18 & 19 yr olds
accepted as part of a
group with a leader

RESIDENCE

OXFORD BROOKES UNIVERSITY	HEADINGTON CAMPUS
Room Type	Single room with en-suite and standard rooms
Bathroom Ratio	1:1 students
Room set up	Flats of 5 rooms
What's in a room	Single bed, wardrobe, desk, chair
Common room	Yes
Cleaning	Weekly
Linen cleaning	Changed weekly
Towels	Students bring their own towels
Laundry	Available in residence (small fee)
Meals	Served in on-site canteen, packed lunch at weekends
Wi-Fi	Yes
Distance to classes	On campus



CENTRE GUIDES AND FULL SAMPLE PROGRAMME

Full programmes for the duration of your stay are available on our Centre Guides.

[CLICK HERE](#)

	SUNDAY	MONDAY	TUESDAY	WEDNESDAY	THURSDAY	FRIDAY	SATURDAY
Morning	Arrivals/on-site Activities	Testing & Induction or Lessons	Lessons	Lessons	Lessons	Lessons	Full day excursion: London with Westminster Walking Tour and National Gallery
Afternoon		Oxford - Walking tour	Indoor Sports Arts & Crafts	Half-day visit: Oxford Museum or College	Half-day trip: Bourton on the Water	Nature Walk Indoor Sports	
Evening	Outdoor Games Kahoot Quiz	Themed Disco Outdoor sports	Balloon Battle	Q&A with Staff Egg Drop	Dance Workshop Karaoke	Trashion Show Outdoor sports	



< CANTERBURY

Canterbury is a historic city located in the county of Kent. With medieval streets, a world-famous Cathedral and ancient buildings in the city which is a UNESCO World Heritage Site. Our centre is located on the modern campus of University of Kent, within walking distance from the city centre. There are excellent sports facilities available as well as large outdoor spaces on campus for additional activities.



WI-FI



ATM



SHOP
ON-SITE



SPORTS
FACILITIES



MEDIUM
CENTRE



UNIVERSITY OF KENT

- Suburban location
- 20 min walking distance to central Canterbury



26 JUN - 07 AUG

AGE RANGE: 11-19*

*18 & 19 yr olds accepted as part of a group with a leader

RESIDENCE

UNIVERSITY OF KENT	TYLER COURT	DARWIN COLLEGE
Room Type	Single room with en-suite	Single room
Bathroom Ratio	1:1 students	1:5 students
Room set up	Flats of 5 rooms	
What's in a room	Single bed, wardrobe, desk, chair	
Common room	Yes	
Cleaning	Weekly	
Linen cleaning	Changed weekly	
Towels	Students bring their own towels	
Laundry	Available in residence (small fee)	
Meals	Served in on-site canteen, packed lunch at weekends	
Wi-Fi	Yes	
Distance to classes	On campus	



CENTRE GUIDES AND FULL SAMPLE PROGRAMME

Full programmes for the duration of your stay are available on our Centre Guides.

[CLICK HERE](#)

	SUNDAY	MONDAY	TUESDAY	WEDNESDAY	THURSDAY	FRIDAY	SATURDAY
Morning	Arrivals/on-site Activities	Testing & Induction or Lessons	Lessons	Lessons	Lessons	Lessons	Full-day excursion: London with Westminster Walking Tour and National Gallery
Afternoon		Canterbury City Visit	Half-day trip: Dover Castle Visit	Mini Olympics Lip Dub video preparation	Half-day trip to Whitstable	School Assembly Disco Preparation	
Evening	Welcome Games and Quiz	Talent Show	Photo scavenger hunt	Eurovision karaoke	Lip Dub Video Presentations	Themed disco	Film night
		Ultimate Frisbee	Culture club		Dodgeball		



< SOUTH WEST, WELLINGTON SCHOOL

One of the most prestigious independent schools, set in wonderful surroundings, in the popular location of the South West of England. Founded in 1837, the school occupies a 35 acre site in the centre of the market town of Wellington. The school offer excellent facilities for students and it's a short walk away from local high street and shops. Trains run to London from two nearby train stations. Bristol and Bath are also nearby as is the famous town of Glastonbury.



WI-FI



ATM



SHOP
ON-SITE



SPORTS
FACILITIES



MEDIUM
CENTRE



WELLINGTON SCHOOL

- Suburban location
- 10 minute walk to local high street



10 JUL - 14 AUG

AGE RANGE: 7-15

NEW ACCOMMODATION

RESIDENCE

WELLINGTON SCHOOL	
Room Type	Single room with en-suite
Bathroom Ratio	1:1 students
Room set up	Flats of 5 rooms
What's in a room	Single bed, wardrobe, desk, chair
Common room	Yes
Cleaning	Weekly
Linen cleaning	Changed weekly
Towels	Students bring their own towels
Laundry	Available in residence
Meals	Served in on-site dining hall
Wi-Fi	Yes
Distance to classes	On campus



SAMPLE PROGRAMME

Full programmes for the duration of your stay are available on our Centre Guides.

	SUNDAY	MONDAY	TUESDAY	WEDNESDAY	THURSDAY	FRIDAY	SATURDAY
Morning	Arrivals/on-site Activities	Testing & Induction or Lessons	Lessons	Lessons	Lessons	Lessons	Full-day excursion: Bristol, Banksy walking tour and M shed.
Afternoon		Canterbury City Visit	Half-day trip: Dover Castle Visit	Mini Olympics Lip Dub video preparation	Half-day trip to Whitstable	School Assembly Disco Preparation	
Evening	Welcome Games and Quiz	Talent Show	Photo scavenger hunt	Eurovision karaoke	Lip Dub Video Presentations	Themed disco	Film night
		Ultimate Frisbee	Culture club		Dodgeball		



< EMBASSY SUMMER IN NORTH AMERICA

USA

From the Statue of Liberty to Mickey Mouse to the American flag, the US has some of the most iconic images in the whole world and our centres are located in three of the most iconic cities; New York, Los Angeles and Boston. From the vibrancy and excitement of cities that never sleep to the laid back vibes of the West Coast, the US, famous for its summer camps, is the perfect place to choose to improve your English.

CANADA

Where snow-peaked mountains join freshwater lakes, and huge forests meet thriving, cosmopolitan cities, Canada has an endless array of landscapes. As the world's second largest country, with two official languages - English and French - and an eclectic mix of cultures, Canada really has it all.







< LOS ANGELES, CSUN

Welcome to sunny California! Our centre is located at the Northridge campus of California State University (CSU) in San Fernando Valley, Los Angeles. There are amazing facilities on the campus such as outdoor basketball and volleyball courts, swimming pool, multi games room and LA city centre is only 45 minutes away.



WI-FI



ATM



SHOP
ON-SITE



SPORTS
FACILITIES



LARGE
CENTRE



SWIMMING
POOL



CALIFORNIA STATE UNIVERSITY

- Suburban location
- 45 min by coach to downtown Los Angeles



12 JUN - 07 AUG

AGE RANGE: 10-18

RESIDENCE

QUEEN MARY UNIVERSITY OF LONDON

Room Type	Twin room	Apartment-style twin room with en-suite
Bathroom Ratio	1:4 students	
Room set up	Spread across 4 buildings	
What's in a room	Single or bunk bed, wardrobe, desk, chair, air-condition	
Common room	Yes	
Cleaning	Students must clean their own rooms, bathrooms are cleaned weekly and common areas daily	
Linen cleaning	Changed weekly	
Towels	Provided	
Laundry	Available in residence, small fee	
Meals	Served in on-site canteen, packed lunch at weekends	
Wi-Fi	Yes	
Distance to classes	On campus	



DAY PROGRAMME

A great addition to a family holiday, enjoy Los Angeles plus English language learning in a safe and nurturing environment. Each day is filled with great lessons and lots of exciting activities, without accommodation.

CENTRE GUIDES AND FULL SAMPLE PROGRAMME

Full programmes for the duration of your stay are available on our Centre Guides.

[CLICK HERE](#)

	SUNDAY	MONDAY	TUESDAY	WEDNESDAY	THURSDAY	FRIDAY	SATURDAY
Morning	Arrivals/on-site activities	Testing & Orientation or lessons	Full-day excursion: Getty Center, LA Cathedral, Olvera Street, LA Union Station and Chinatown	Lessons	Full-day excursion: Hollywood, Beverly Hills and Rodeo Drive	Lessons	Full-day excursion: beach day in Malibu with Zuma beach and visit The Getty Villa
Afternoon		Campus Tour / Supply Run / Mall Trip					
Evening	Welcome Party	Ice Cream Social	Arts and Crafts Night	Scavenger Hunt	Volleyball Tournament	Rock Art Project / Graduation Party	FIFA Tournament



< NEW YORK, BROOKLYN

Our centre is located in Brooklyn, just one subway stop from downtown Manhattan. The breath-taking iconic skyline of New York can be viewed from Brooklyn Heights and everything that the city's got to offer is within easy reach. This is perfect if students want to experience the "Big Apple" but also discover the more authentic parts of the city.

RESIDENCE

	CONOLLY HALL	HOYT
Room Type	Triple room	Adjoining twin or triple rooms with shared en-suite
Bathroom Ratio	1:12 students	1:4 students
Room set up	Traditional US college dormitory rooms	
What's in a room	Single bed, wardrobe, desk, chair, air-condition	
Common room	Yes	
Cleaning	Students must clean their own rooms and common areas are cleaned daily	
Linen cleaning	Changed weekly	
Towels	Provided	
Laundry	Available in residence, small fee	
Meals	Served in on-site canteen, packed lunch at weekends	
Wi-Fi	Yes	
Distance to classes	On campus	



WI-FI



ATM



SHOP
ON-SITE



MEDIUM
CENTRE



SWIMMING
POOL



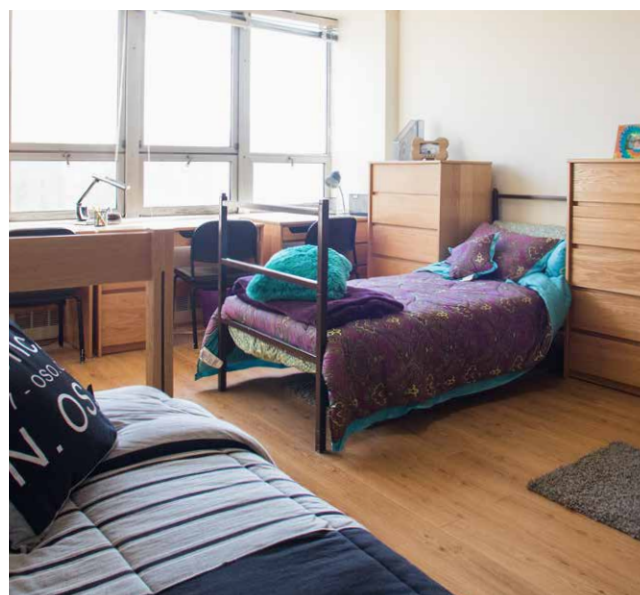
BROOKLYN

- Central location
- 14 min by tube to central Manhattan



19 JUN – 31 JUL

AGE RANGE: 12-18



DAY PROGRAMME

A great addition to a family holiday, enjoy New York plus English language learning in a safe and nurturing environment. Each day is filled with great lessons and lots of exciting activities, without accommodation.

CENTRE GUIDES AND FULL SAMPLE PROGRAMME

Full programmes for the duration of your stay are available on our Centre Guides.

[CLICK HERE](#)

	SUNDAY	MONDAY	TUESDAY	WEDNESDAY	THURSDAY	FRIDAY	SATURDAY
Morning	Arrivals/on-site activities. Explore DT Brooklyn or optional excursions	Testing & Orientation or lessons	Lessons	Lessons	Lessons	Lessons/ Graduation	Full-day excursion: Statue of Liberty and Ellis Island Tour
Afternoon		Central Park South Tour & Columbus Circle	Walking Tour of St Patricks Cathedral & 5th Ave	Cable car to Roosevelt	Brooklyn Bridge Walk & View City Hall/Temple Court	Explore DUMBO & Ferry to South Street Seaport	
Evening	Welcome Party	Tour of Times Square	Sports in Park or Arts & Crafts	Visit to Little Italy and Chinatown with supper	Sports in Park or Karaoke	Greenwich Village/ Washington Sq Park	Scavenger Hunt with LIC Gantry Plaza State Park



< BOSTON, TUFTS UNIVERSITY

Our Boston centre is located on the beautiful campus of the prestigious Tufts University in Medford, Massachusetts, only 20 minutes to the historic city centre. The campus has fantastic facilities including a modern sports hall, indoor swimming pool and running track with a recreational field and outdoor space as well as spacious residence halls. Beautiful New England villages, dramatic coastlines, popular beaches and the attractions of Boston are all within easy reach.

RESIDENCE

BOSTON TUFTS UNIVERSITY - HASKELL HALL			
Room Type	Single room	Twin room	Triple room
Bathroom Ratio	1:6 students		
Room set up	Traditional US college dormitory rooms		
What's in a room	Single bed, wardrobe, desk, chair, air-condition		
Common room	Yes		
Cleaning	Students must clean their own rooms, bathrooms and common areas are cleaned daily		
Linen cleaning	Changed weekly		
Towels	Provided		
Laundry	Available in residence, small fee		
Meals	Served in on-site canteen, packed lunch at weekends		
Wi-Fi	Yes		
Distance to classes	On campus		



WI-FI



ATM



SHOP
ON-SITE



SPORTS
FACILITIES



SMALL
CENTRE



BOSTON TUFTS UNIVERSITY

- Suburban location
- 20 min by tube to central Boston



26 JUN – 31 JUL

AGE RANGE: 13–18



DAY PROGRAMME

A great addition to a family holiday, enjoy Boston plus English language learning in a safe and nurturing environment. Each day is filled with great lessons and lots of exciting activities, without accommodation.

CENTRE GUIDES AND FULL SAMPLE PROGRAMME

Full programmes for the duration of your stay are available on our Centre Guides.

[CLICK HERE](#)

	SUNDAY	MONDAY	TUESDAY	WEDNESDAY	THURSDAY	FRIDAY	SATURDAY
Morning	Arrivals/on-site activities	Testing & Orientation or lessons	Lessons	Lessons	Lessons	Lessons	Full-day excursion: Charles River Walk and Museum of Science
Afternoon	Shopping day or optional trip to NYC	Davis Square Scavenger Hunt	Walk the Freedom Trail	Visit to Harvard University	Visit Faneuil Hall & Quincy Market, Downtown Crossing	Exploring the North End and The Sports Museum	
Evening	Sports Tournament	Welcome Party	US sports / optional bowling/ tennis competition	Tie Dye Tee Shirt Night	Shopping and History in Boston by night!	Graduation Party	Casino night / 4th July celebration



LEARN
FRENCH
HERE

< MONTREAL, CANADA



WI-FI



SMALL
CENTRE



MCGILL UNIVERSITY

- City centre location



03 JUL - 31 JUL

AGE RANGE: 12-17

NEW ACCOMMODATION

A gorgeous city bursting with cosmopolitan charm, Montreal is the place for students surrounded by breath-taking scenery, and loads of things to see and do. Montreal is a bilingual city, so students can choose to study English or French here! Studying at McGill's University, in the heart of downtown Montreal, students can choose to stay in a Homestay or at Bishop Mountain Hall residence.

ACCOMMODATION

	HOMESTAY	BISHOP MOUNTAIN
Room Type	Single room	Single room. Twin available upon request for students travelling together.
Bathroom Ratio	Shared with family	Shared bathrooms
Room set up	Shared with family	Rooms are set over a number of floors
What's in a room	Single bed, wardrobe, desk, chair	Single beds, wardrobes, desks, chairs, mini-fridge, wash basin
Common room	Shared common areas with family	Common areas are available
Cleaning	Weekly	Common areas and bathrooms cleaned daily.
Linen cleaning	Changed weekly	
Towels	Provided	
Laundry	Available	Paid laundry facilities
Meals	Served by host, packed lunch provided	Served on-site, packed lunch provided
Wi-Fi	Yes	
Distance to classes	40 min by public transport	9-minute walk



DAY PROGRAMME

A great addition to a family holiday, enjoy Boston plus English language learning in a safe and nurturing environment. Each day is filled with great lessons and lots of exciting activities, without accommodation.

CENTRE GUIDES AND FULL SAMPLE PROGRAMME

Full programmes for the duration of your stay are available on our Centre Guides.

[CLICK HERE](#)

	SUNDAY	MONDAY	TUESDAY	WEDNESDAY	THURSDAY	FRIDAY	SATURDAY
Morning		Testing & Induction or Lessons	Lessons	Lessons	Lessons	Lessons	
Afternoon	Arrivals/ on-site activities or Explore Montreal	Montreal City Tour	Fine Art Museum	Canoeing	Little Italy & Jean Talon Market	Ice Skating	Full-day trip to Quebec
Evening		Free Evening	Jazz Festival	Free Evening	Sunset Hike up Mount-Royal	Free Evening	



< TORONTO, CANADA

Our Toronto centre is located at York University about 30 minutes by metro from the city centre. The subway stop is located on campus and a five minute walk from the residence. This central location, on a modern university campus, provides a perfect base for a Canadian summer school experience.

RESIDENCE

BOSTON TUFTS UNIVERSITY - HASKELL HALL			
Room Type	Single room	Twin room	Triple room
Bathroom Ratio	1:6 students		
Room set up	Traditional US college dormitory rooms		
What's in a room	Single bed, wardrobe, desk, chair, air-condition		
Common room	Yes		
Cleaning	Students must clean their own rooms, bathrooms and common areas are cleaned daily		
Linen cleaning	Changed weekly		
Towels	Provided		
Laundry	Available in residence, small fee		
Meals	Served in on-site canteen, packed lunch at weekends		
Wi-Fi	Yes		
Distance to classes	On campus		



WI-FI



ATM



SHOP
ON-SITE



SPORTS
FACILITIES



LARGE
CENTRE



BOSTON TUFTS UNIVERSITY

- Suburban location
- 20 min by tube to central
Boston



10 JUL - 07 AUG

AGE RANGE: 12-18



DAY PROGRAMME

A great addition to a family holiday, enjoy Boston plus English language learning in a safe and nurturing environment. Each day is filled with great lessons and lots of exciting activities, without accommodation.

CENTRE GUIDES AND FULL SAMPLE PROGRAMME

Full programmes for the duration of your stay are available on our Centre Guides.

[CLICK HERE](#)

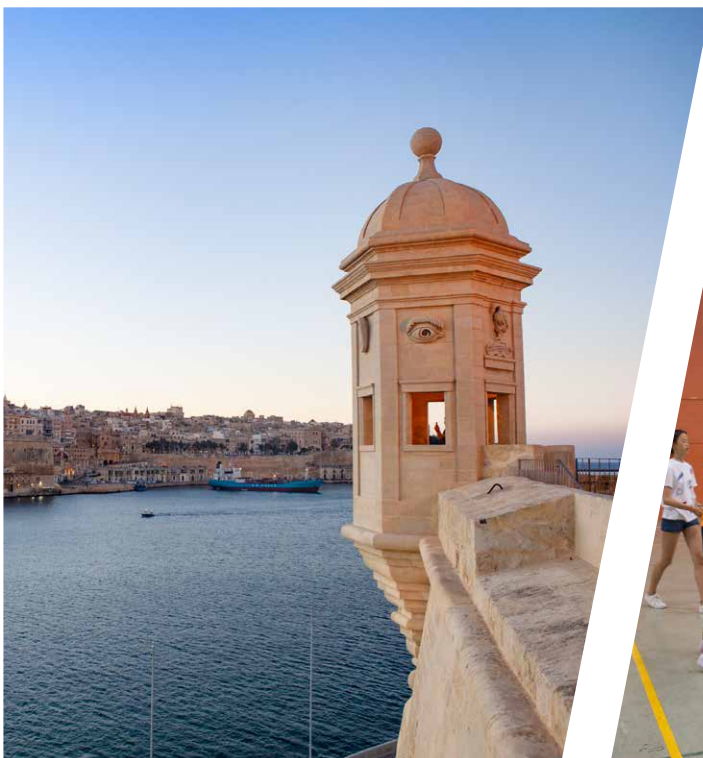
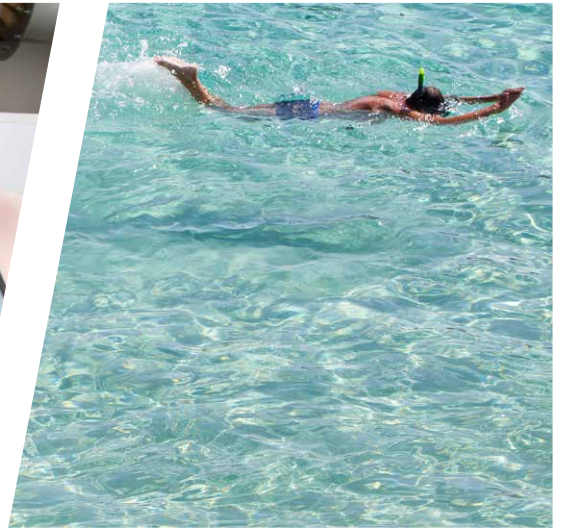
	SUNDAY	MONDAY	TUESDAY	WEDNESDAY	THURSDAY	FRIDAY	SATURDAY
Morning	Arrivals/on-site activities	Testing & Orientation or lessons	Lessons	Lessons	Lessons	Lessons	Full-day excursion: Charles River Walk and Museum of Science
Afternoon	Shopping day or optional trip to NYC	Davis Square Scavenger Hunt	Walk the Freedom Trail	Visit to Harvard University	Visit Faneuil Hall & Quincy Market, Downtown Crossing	Exploring the North End and The Sports Museum	
Evening	Sports Tournament	Welcome Party	US sports / optional bowling/ tennis competition	Tie Dye Tee Shirt Night	Shopping and History in Boston by night!	Graduation Party	Casino night / 4th July celebration



< EMBASSY SUMMER IN MALTA

Small and easy to explore, Malta is a charming and very friendly place to learn English. Relax on the beach or visit one of the island's many unique places of interest. Malta is steeped in history, offering visits to ancient Neolithic temples, the silent city of Mdina and much more!

The weather here is warm, sunny, and bright, and the crystal-clear blue sea never fails to put a smile on your face. With an emphasis on fun, this mediterranean island is a great place to improve English, make lifelong friends and enjoy an exciting summer camp experience.





< MALTA HOST FAMILY & DAY PROGRAMME

We have offered a host family programme in Malta for many years. Our families are typically local Maltese families with years of experience in welcoming international students in to their homes. Students on our host family programmes have breakfast and the majority of their evening meals with their families, and lunches at school. Our families are all located within a 30 minute bus journey to school, with all lessons taking place at St Martin's College. Our host family programme is the perfect way for students to fully immerse themselves in the language and culture of Malta.

ACCOMMODATION

MALTA HOMESTAY	
Room Type	Twin/Triple room
Bathroom Ratio	1:3 students
Room set up	Single bed, wardrobe, TV, air conditioner
What's in a room	Single bed, wardrobe, bedside table, desk
Cleaning	Weekly
Linen cleaning	Weekly
Towels	Provided, students should bring their own beach towels.
Laundry	Available
Meals	Dinner and breakfast served at homestay. Lunch served at school or activity. (packed lunch at weekends)
Wi-Fi	Yes

OPTIONAL ACTIVITIES

- Diving course PADI open water
- Diving course PADI advanced

CENTRE GUIDES AND FULL SAMPLE PROGRAMME

Full programmes for the duration of your stay are available in our Centre Guides.

(Please note that our day programmes are offered for 5 or 7 days, students choosing the 5 day option will not take part in the weekend excursions)

[CLICK HERE](#)

	SUNDAY	MONDAY	TUESDAY	WEDNESDAY	THURSDAY	FRIDAY	SATURDAY
Morning	Arrivals/ on-site activities or Explore Mdina	Testing & Induction or Lessons	Lessons	Lessons	Lessons	Lessons	Full-day trip to Comino
Afternoon		Splash and Fun Waterpark	Harbour Cruise	St. Peter's Pool	Valletta Visual Show	Beach BBQ	
Evening	Orientation Walk	Welcome Party	Maltese Night	Scavenger Hunt	Pool Party	Sports Festival	Film Night



WI-FI



LARGE
CENTRE



Embassy Summer programmes
fall under EC Malta and are
accredited by FELTOM.



ST MARTIN'S COLLEGE

- Suburban location
- 30 min by bus to central Sliema



26 JUL – 28 AUG

AGE RANGE: 12–17



DAY PROGRAMME

A great addition to a family holiday, enjoy fun by the seaside plus English language learning in a safe and nurturing environment. Parents can choose to also take English language lessons at our adult school in St Julien's.. Each day is filled with great lessons and lots of exciting activities, without accommodation.



< MALTA CAMPUS HUB

New for 2022, we are excited to be able to offer our students the option of a residential programme at the brand new University of Malta purpose built student residence, Campus Hub. Just a short journey from St Martin's College, this brand new student residence offers a variety of room styles, all set above a piazza designed for student life. With a variety of food and shopping outlets, a small swimming pool and student common areas to relax in, the Campus Hub is a fantastic option for students looking for a more campus style feel to their summer school experience.

ACCOMMODATION

STUDENT RESIDENCE 12-17 YRS (18-19 AS PART OF A GROUP)

Room Type	Twin & Triple rooms*
Bathroom Ratio	2:4 students
What's in a room	Single bed, wardrobe, bedside table, desk, lockable drawers
Common room	There are common spaces with lounge area, kitchen and TV in the student residence
Cleaning	Bedrooms are cleaned every other day
Linen	Provided
Towels	Students should bring their own towels, including a beach towel
Laundry	Available on campus at an additional cost
Meals	Dinner and breakfast served on campus, lunch served at school (packed lunch at weekends)
Wi-Fi	Yes

OPTIONAL ACTIVITIES

- Diving course PADI open water
- Diving course PADI advanced

SAMPLE PROGRAMME

Full programmes for the duration of your stay are available in our Centre Guides.

	SUNDAY	MONDAY	TUESDAY	WEDNESDAY	THURSDAY	FRIDAY	SATURDAY
Morning	Arrivals/ on-site activities or Explore Mdina	Testing & Induction or Lessons	Lessons	Lessons	Lessons	Lessons	Full-day trip to Comino
Afternoon		Splash and Fun Waterpark	Harbour Cruise	St. Peter's Pool	Valletta Visual Show	Beach BBQ	
Evening	Orientation Walk	Welcome Party	Maltese Night	Scavenger Hunt	Pool Party	Sports Festival	Film Night



WI-FI



LARGE
CENTRE



PRIVATE
TRANSPORTATION



Embassy Summer
programmes fall
under EC Malta and
are accredited by
FELTOM.



ST MARTIN'S COLLEGE

- Suburban location
- 20 min by bus to central Sliema



26 JUN – 28 AUG

AGE RANGE: 12–17
(18-19 as part of a group)





< MALTA HOTEL OPTION

Our ever popular hotel residential option is back for 2022. Student stay in a hotel located on the north side of the island, close to the beautiful sandy beaches, which studying at St Martin's College.

With shops and local amenities within walking distance, a swimming pool to relax by and a hotel style buffet restaurant to eat in, this is a firm favourite with our students.

ACCOMMODATION

HOTEL RESIDENCE 12-17 YRS (18-19 GROUPS ONLY)	
Room Type	Triple / Quad room
Bathroom Ratio	1:3 students
What's in a room	Single bed, wardrobe, TV, air conditioner
Common room	Common spaces
Cleaning	Bedrooms are cleaned every other day
Linen	Provided
Towels	Provided, students should bring their own beach towel
Laundry	Available locally at an additional cost
Meals	Dinner and breakfast served on campus, lunch served at school (packed lunch at weekends)
Wi-Fi	Yes

OPTIONAL ACTIVITIES

- Diving course PADI open water
- Diving course PADI advanced



WI-FI



LARGE
CENTRE



PRIVATE
TRANSPORTATION



Embassy Summer programmes fall under EC Malta and are accredited by FELTOM.



ST MARTIN'S COLLEGE

- Suburban location
- 20 min by bus to central Sliema



26 JUN – 28 AUG

AGE RANGE: 12–18

18-19 as part of a group



CENTRE GUIDES AND FULL SAMPLE PROGRAMME

Full programmes for the duration of your stay are available in our Centre Guides.

[CLICK HERE](#)

	SUNDAY	MONDAY	TUESDAY	WEDNESDAY	THURSDAY	FRIDAY	SATURDAY
Morning	Arrivals/ on-site activities or Explore Mdina	Testing & Induction or Lessons	Lessons	Lessons	Lessons	Lessons	Full-day trip to Comino
Afternoon		Splash and Fun Waterpark	Harbour Cruise	St. Peter's Pool	Valletta Visual Show	Beach BBQ	
Evening	Orientation Walk	Welcome Party	Maltese Night	Scavenger Hunt	Pool Party	Sports Festival	Film Night

< OTHER OPTIONS WITH EC YOUNG LEARNERS

EC Young Learners offers much more to its students than fantastic summer school experiences, whether online or face-to-face, there is something for everyone, with programmes available all year round!

Wide range of options

We have a wide range of options for both individuals and groups and are always open to specific requests and tailor-made options. These options can be either face to face, online or a hybrid of both. Please read on for more information on how we can extend the summer school experience and support language learning all year round.

EC STUDY TOURS



EC VIRTUAL YOUNG LEARNERS



EC ACADEMY



< EC STUDY TOURS

Study Tours are the perfect option for teachers organising educational school trips or any other groups of students travelling with a leader or guardian at any time throughout the year.

In addition to our award-winning summer camps we also offer closed group programmes outside of the high season in the UK, Malta and North America. These closed group programmes are typically tailored to the specific needs of the group and are the perfect opportunity for school groups to extend and enhance their in classroom learning to something more experiential!

For students who simply cannot get enough of summer camp, did you know that we also offer face to face 'camp' experiences in Autumn (October), Winter (January) and Spring (April), These low season camps are available to both groups and individuals and offer a similar programme to our summer school experiences.



**STUDY
TOURS**



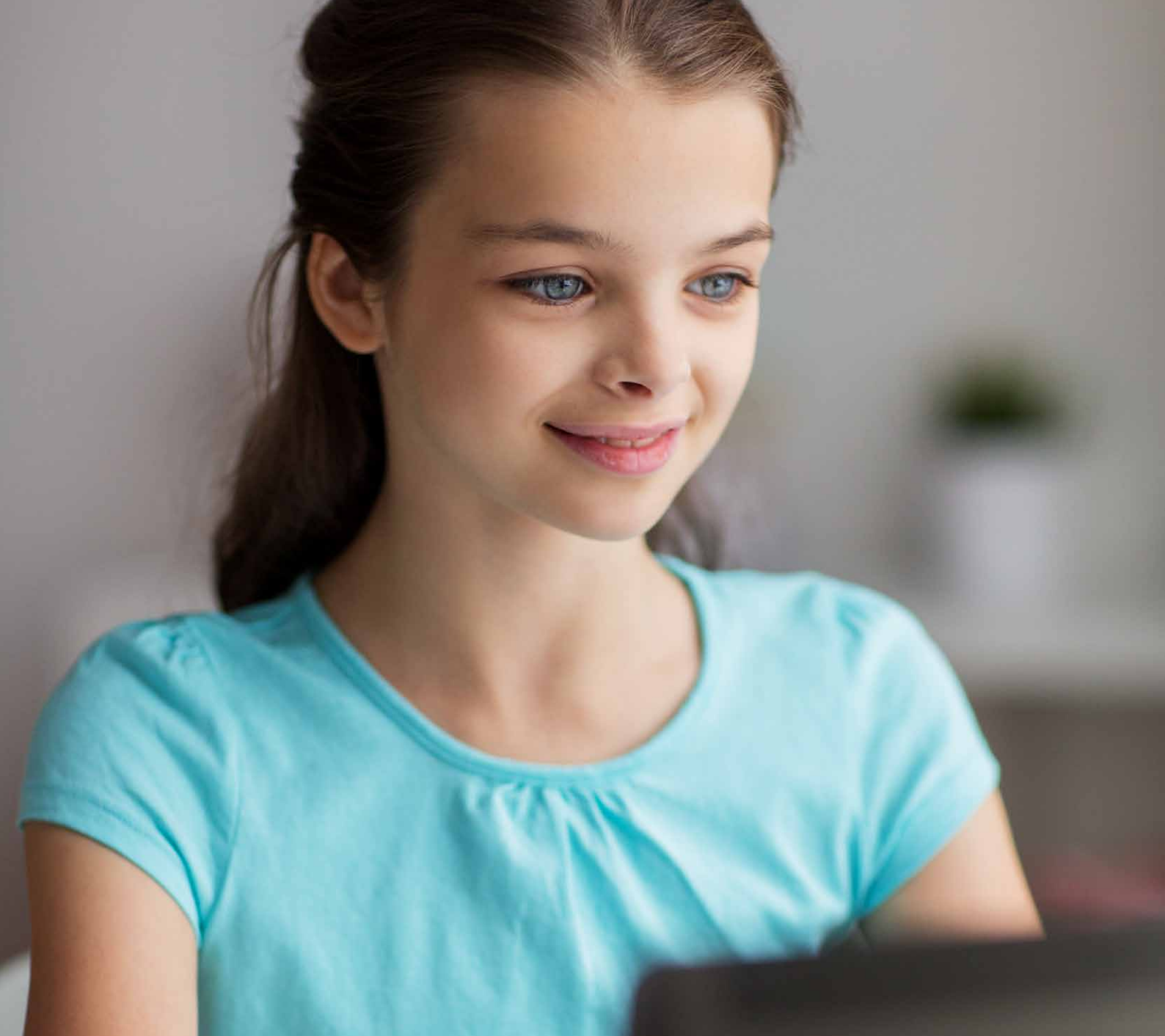


Spring Camp

This spring we are offering two exciting programmes to students age 11-17 in the UK and Malta.

These programmes are open to both individuals and groups and there are both residential and family stay options available.

For more information on all of our low season programmes please visit our study tours website at www.ecenglish.com/en/study-tours



VIRTUAL REALITY

Find out more about our
English courses in Virtual Reality

[CLICK HERE](#)



< EC VIRTUAL YOUNG LEARNERS

Bring the classroom into your home with our online English courses

Our young learners can now benefit from our award-winning English language teaching without having to travel.

EC Virtual Young Learners brings language learning to the comfort of your home using the innovative National Geographic Learning curriculum.

Students learn from qualified and friendly English teachers. Our EC teaching standards provide clear guidance on delivering the most productive learning experience for your teens.

Lessons are held on the secure Microsoft Teams platform, which is designed for collaboration, thus making interacting with teachers and international classmates simple and effective.

Powered by



Thanks to our partnership with National Geographic Learning, students have access to engaging learning materials which help students discover who they are, and to explore what they might become in the future. Using real-life content about people and places from around the globe, students learn the English and 21st century skills teenagers need to understand their place in the world.

What's Included

- ✓ Course eBooks powered by National Geographic Learning
- ✓ Access to our qualified and experienced teachers
- ✓ Live classes
- ✓ Cambridge Young Learner test to determine your English level
- ✓ Access to learning materials for preparation and post class work
- ✓ Maximum class size of 10 students - guaranteed
- ✓ FREE subscription to Microsoft Office for 12 months including Word, Excel, PowerPoint, and much more to help our young learners around the world make the most of their home studies
- ✓ End of course e-certificate

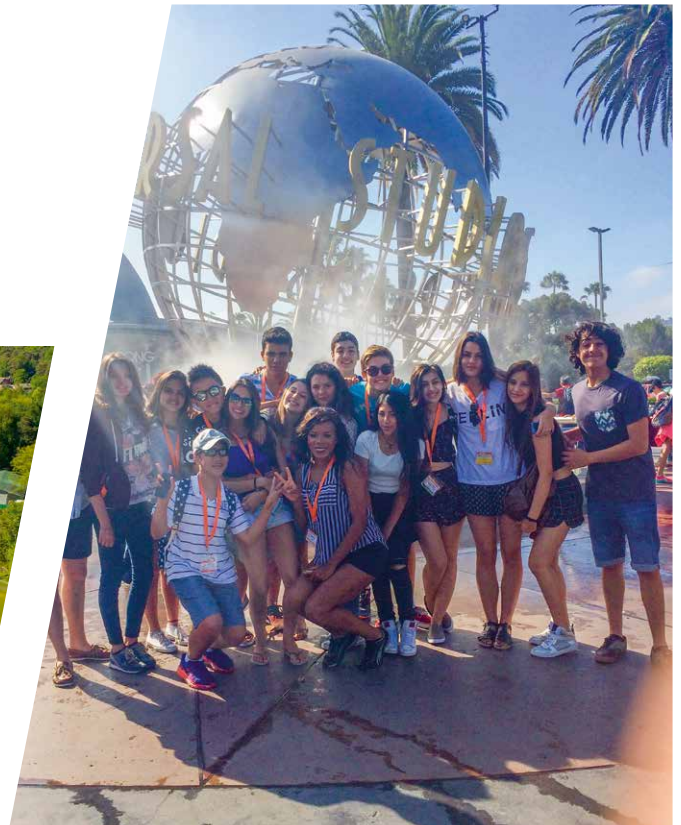
Options

- 1 EC YOUNG LEARNERS VIRTUAL LANGUAGE CLUB**
 - Set course dates
 - 2 days a week (Tues & Thur)
 - 90 minutes per day
 - Lesson at 5pm London time
- 2 EMBASSY SUMMER VIRTUAL EXPERIENCE**
 - Continuous enrolment
 - 5 days a week (Mon to Fri)
 - 90 minutes of English lessons per day
 - 45 minutes of cultural and social activities per day
 - Lessons at 8am and 5pm London time
- 3 EC VIRTUAL YOUNG LEARNER ON DEMAND**
 - Exclusively for closed groups or one-to-one
 - Fully flexible scheduling
 - Choice of projects
 - Contact us to start building your specialised course

< EC ACADEMY

EC Academy is an exclusive English Language school experience, set in some of the most historic and beautiful areas of the world. Our two academies, UCLA and Wellington College, are prestigious and well-renowned schools steeped in history and traditions.

EC Academy offers students the opportunity to develop their English language, academic and sporting skills. Our balanced programme of academic study and specialist courses enables students to grow in confidence in a range of areas. Academy students participate in small English classes and lessons are taught by our friendly and experienced teachers. Outside the classroom students have the opportunity to choose from a range of specialised courses.



WHY CHOOSE EC ACADEMY:

- Small English class sizes ensuring **personal attention**
- English language tuition from **experienced English teachers**
- **Professionally taught** specialist courses
- The opportunity to study on the campus of a **world famous educational institution**
- **A safe and secure environment** with a staff to student on-site ratio of 1:5
- An **extensive all-inclusive package** of excursions and on-site activities



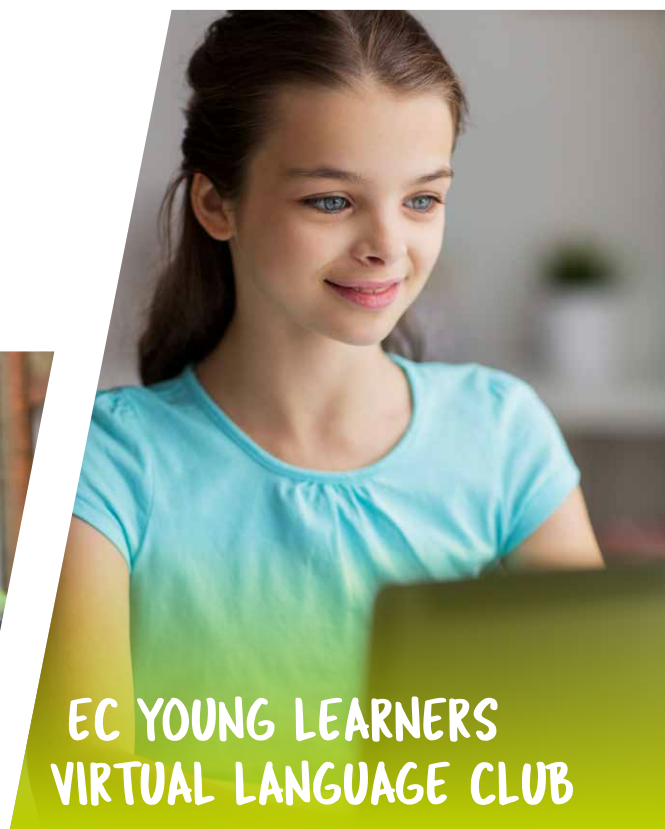
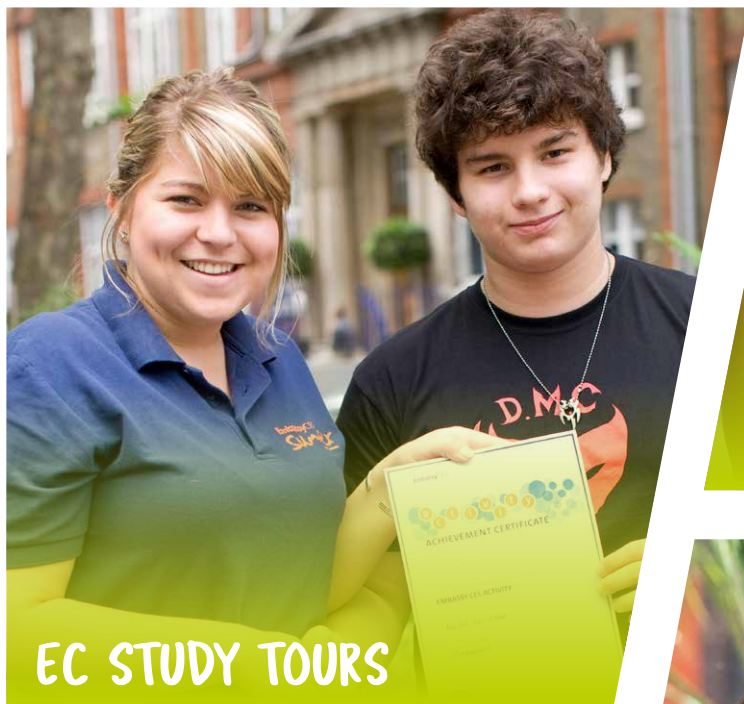
“Students set out on a journey of self-discovery and leave as confident new members of an international community of peers. They go back home with increased sense of achievement and independence after successfully navigating life abroad and are ready to put all they have learnt into practice”

ANDREW
Centre Manager



SOMETHING FOR EVERYONE, ALL YEAR ROUND!

CLICK YOUR NEXT ADVENTURE BELOW! 



Embassy Summer forms part of EC English Holdings Ltd.
embassysummer.com