



Learning English
for a Better
Future



Juniors
ages 6 to 17 years



GL  **BE**
ENGLISH CENTRE

Contents

ABOUT THE GLOBE

- Why choose Exeter? 4
- Why choose the Globe? 6
- School Facilities 7
- Social Programme and Sports 8
- Accommodation 9

MINI STAYS FOR GROUPS

- Curriculum Programmes 16
- Exam Preparation Programmes 18
- Future Careers Programmes 20

VACATION COURSES

- Discovery Programme – 10
11-14 years and 15-17 years
- Explorer Programme – 12
6-10 years

WORK PLACEMENT PROGRAMMES

- Work Trials (Groups) 22
- Work Experience (Individuals)

INTENSIVE COURSES

- English Plus Programme 14
- One-to-One lessons and courses

Photo courtesy of Tony Howell
(Photos boating/London/shelter/canoeing/sports)

Welcome to the Globe English Centre

The Globe English Centre offers:

Lively, intensive classes

An excellent choice of courses and activities



Expert teaching

A friendly, relaxed atmosphere

A real understanding of young students' needs



A pleasant and safe environment in the city centre



Catherine Borgen &
Anton Borgen-Davis
Directors

The Globe English Centre is a very special place. We have enjoyed running this school in the beautiful city of Exeter since 1978.

Capital city of the county of Devon, Exeter is around 2 hours from London and 20 minutes from the sea. The region is the top British tourist destination, thanks to its rich mixture of culture, beauty and charm. Surrounded by spectacular countryside and some of the best beaches in Britain, Exeter combines the excitement of a large city with the friendliness of a close community.

Exeter is one of Britain's safest cities and is the ideal location to improve your English, experience different cultures, make new friends and have a wonderful time.

We look forward to meeting you and hope to make your stay an unforgettable experience.

Catherine Borgen and Anton Borgen-Davis
Directors

Why choose Exeter?



Cathedral Green



Exeter Cathedral



The Quayside

Exeter is a wonderful city, home to a historic cathedral. With a population of 125,000, it is a relatively small city, but offers something for everyone. You will soon feel at home in this well-loved city.

Great reasons to come to Exeter include:

- **The climate** - the sunniest and warmest in Britain
- **The county** - voted the "Best County in Britain"
- **The city** - voted Top British City for Quality of Life: lowest crime and pollution levels; best cultural, recreational and commercial facilities
- **The community** - safe and friendly community where people have time to talk
- **The access** - a little over 2 hours by train from London; Exeter has its own airport and other airports are easy to reach (for example, Bristol, London airports)
- **The sea** - world heritage coastline just 20 minutes from the Globe
- **The university** - regularly voted in the UK's top ten universities
- **The shopping** - several shopping centres providing an exciting shopping experience
- **The quayside** - many parks and colourful gardens add to the charm and relaxed atmosphere
- **The sports facilities** - a great range of options for almost all sports
- **The culture** - theatres, arts centres, galleries, concert halls and cinemas for culture enthusiasts
- **The nightlife** - a vibrant city with a large student population and a buzzing nightlife with live music, nightclubs, cafés and restaurants
- **The Globe** - centrally located to easily enjoy all of the above

Surrounding Area



Dartmoor



Budleigh Salterton



Durdle Door

The city's location in the heart of Devon, surrounded by miles of countryside and close to the World Heritage Jurassic Coast, means there are plenty of opportunities to enjoy the stunning scenery.

The area of Torquay, Paignton and Brixham form the English Riviera, thanks to the palm trees, beaches and family holiday atmosphere. The area is steeped in maritime history and plays host to a number of sporting events and festivals, it also has some fantastic places to eat.

The South Devon Heritage Coast is truly beautiful and varied, and is only 10 miles from

Exeter. Many of the beaches have awards for water and beach quality, and much of the coastline has been assigned as an AONB status (Area of Outstanding Natural Beauty), and has been chosen as a World Heritage site.

If there is one thing that Devon has in abundance it is incredible areas of natural beauty. The Jurassic Coast, which starts in Exmouth, is a World Heritage site that stretches to Swanage in Dorset. It has over 120 miles of stunning coastal views and gorgeous beaches and is named the fifth greatest natural wonder in Britain.



Beer



Plymouth



Powderham Castle

Why choose the Globe?



Reliable and Honest

- The Globe English Centre is a family school. Catherine Borgen started the Globe in 1978 and now supports her son Anton in the running of the school
- The school offers courses all year round for young learners from the age of six, and guarantees consistent quality and high standards
- All activities on the junior social programme are included in the fees. Students only need pocket money during their stay
- Exeter is the base for our only centre and we welcome on average a hundred students each week
- The Globe guarantees a 24/7 emergency service
- Since opening in 1978, many foreign teachers have returned to the Globe year after year with their students

The Teachers

All our teachers are native speakers and trained in Teaching English as a Foreign Language. Dynamic and approachable, they are expert in motivating students and identifying their needs. They generate interest in lessons with the latest teaching techniques perfected in regular training sessions.

Professional

- Run by a dynamic and experienced team
- Accredited by IALC - International Association of Language Centres and the British Council. Regular and rigorous inspections assess the high quality of all services and provide an independent guarantee
- Member of English UK
- Recommended by many companies and foreign agencies

The Method

- Our long experience in welcoming young learners means students enjoy creative and interactive programmes which motivate them to communicate confidently in English
- We use a range of materials, both original and published, to make our courses as interesting and effective as possible. These include projects, internet activities and communication games
- Homework is designed to encourage the students to communicate with their families and to find out more about everyday life in the UK

School Facilities

Conveniently situated in the city centre within a 10 minute walk from the main shops and sports centres, the Globe's beautifully modernised 19th century buildings offer excellent facilities.

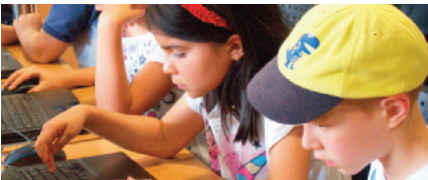


Administration

If students need any help during their stay, our caring and friendly team is always happy to help.

Resources

The Globe has a library where students can borrow books. Wi-Fi is also available throughout the school. Computers, a large screen and projector are all available for integrated e-learning and viewing films – an excellent way to improve English skills!



Classrooms

Each classroom is comfortably equipped and has a whiteboard, CD and DVD players and a television. All of these are integrated into the teaching programme.

Information Technology

There is a computer in every classroom and students are encouraged to use their tablets and smart phones to enhance class activities.

Sports and Leisure

Students are welcome to use the school's selection of board games, and can play billiards or table football in the recreation rooms during break and lunch times.

Playground and Garden

The school has a private playground and a beautiful, enclosed garden with views over the Exe Valley. Here, students can relax with friends and teachers, or enjoy a barbecue. There is also an outdoor classroom for young learners.



Recreation rooms

There are large common rooms on the ground floor opening onto the courtyard and garden where students can relax at break and lunch times.

Other Services

The Adult Centre is immediately next door to the Junior Centre, and is open all year round for adult learners, parents and teachers, making the Globe an ideal choice for families.



“I feel at home here and was made very welcome.”
Patricia Nonato Reichert

Social Programme and Sports



Leisure is an important part of learning. Students enjoy the social programme and practise English in a variety of activities, all accompanied by Globe teachers. On activities students see more of Britain, make new friends, try different sports and have fun.

Sports

Exeter has many excellent sports centres and playing fields which offer tennis, golf, football, cycling, bowling, swimming, horse riding, dry slope skiing, squash and more. The River Exe also provides a variety of water sports such as canoeing, sailing and paddle boarding. If there are any sports students are interested in trying during their stay, they are welcome to contact the Globe in advance and we can help.

Excursions and Social Evenings

Exeter is ideally situated for exploring this beautiful region. Students can spend the afternoon at the seaside or walk in the mysterious Dartmoor National Park, ride a steam train along the charming Dart Valley or

visit other cities like Cardiff, Bristol, Bath, Plymouth and, (in summer) London. Students can meet friends and teachers on evening activities after a wonderful day out!

Workshops

Music, dance, theatre and storytelling form part of our programme to encourage creativity, confidence and communication.

Social Programme facts

All events, excursions and transport are included in the fees, and are compulsory

There is always a teacher or group leader with students

Students will receive a detailed programme each week

Accommodation



Host families play a very important part in students' success. They provide the best opportunity to learn about British culture and make more progress in English. People enjoy sharing their lives and interests with their foreign guests.

Homestays

Globe homestays follow the English UK Code of Practice in accordance with the British Council and British Authority recommendations. Homestays undergo training, police checks, a rigorous safeguarding checklist and attend regular meetings at the school.

Families meet students on arrival and provide a comfortable bedroom and offer breakfast, a packed lunch and an evening meal. They will do some light laundry on a weekly basis if required.

Hosts are chosen using the details on student enrolment forms. It is very important that students include any specific requests on booking. Most young students enjoy sharing their room with other students of the same age, although it may be possible to have a single room if preferred. Homestays do not host two students of the same mother tongue, unless students ask to share with a friend.

The Globe's dedicated Accommodation Officer selects host families for the comfort of their homes, their kindness and the quality of their

welcome. Many hosts are personally known to Globe staff. Most homestays are within 30 minutes/2.8km walking distance of the centre and on a bus route. If students are placed

further, they will be provided with a free bus pass. Homestays work in close cooperation with the Globe in supervising the younger students, and they ensure that school rules and parents' wishes are respected. The Globe will always help if a student has any difficulties or problems with their host family, and will change the host family if necessary.

Private Apartments and Residential Accommodation

The Globe offers a range of well-equipped apartments to students travelling with their parents or another responsible adult.

The school also has contacts with numerous local organisations offering residential options to groups. Please enquire for details.





Discovery Programme

age 11-14, 15-17

Vacation Courses - Discovery

This course is for secondary school students and combines language learning with an enjoyable holiday.

This is a creative and interactive programme designed to encourage oral communication, activate students' passive knowledge and above all build confidence.

Classes are 75% speaking and listening and use authentic materials as well as music, drama and project work to develop language skills. A varied social programme gives new opportunities to practise English while discovering and enjoying the British way of life.

For more information please contact:
registrar@GlobeEnglish.co.uk

“ The Globe is a highly qualified school of English, it has family programmes, so parents and children can attend courses in the same structure. ”

Marianna Scarangella - Italy

Course facts
Start date - any Monday
Age 11-14, 15-17
Level - Beginner to Advanced
Duration - minimum 1 week
Number of lessons - 20 per week = 15 hours
Class times: 09.30-13.00, (14.00-15.30) Summer only
Average in class - 8, maximum - 14
Homework - twice a week
Test on the first day
Course certificate and progress report
Social Programme Each week:
1 afternoon excursion
2 sports and 2 cultural afternoons
2 evening activities and a Saturday excursion
Summer: A Monday full day excursion replaces 2 afternoon activities

Sample Discovery Summer Programme

Day	09.30 - 11.00	11.00 - 11.30	11.30 - 13.00	13.00 - 14.00	Lessons 14.00 -15.30 Activities 14.00 - 16.00+	Evenings
Monday	<p>Existing students - Activity Group A: Workshop on the media (recording/ TV/ radio) Activity Group B: Day excursion to Bath, with a visit to the Roman Baths and free time for shopping</p> <p>New students - Welcome to the Globe. Grammar, speaking and writing tests & Police video on staying safe in the UK and 'prize trail', to get to know Exeter better</p>					
Tuesday	Grammar and accuracy Present tenses Social English for 'getting to know you'	Break	Skills focus Listening - directions Role play – wandering tourists	Lunch	Creativity in the classroom 10 ways to have a better conversation	Private disco
Wednesday	Grammar and accuracy Personality adjectives and appearance	Break	Skills focus Speed dating	Lunch	Excursion: Activity Group A: Visit to Castle Drogo Activity Group B: Visit to Torre Abbey	
Thursday	Grammar and accuracy Narrative tenses	Break	Skills focus Listening – a Roald Dahl story Pronunciation games – rhythm & rhyme in storytelling	Lunch	Creativity in the classroom Creative writing & speaking Students invent & tell their own stories	Cinema evening
Friday	Project morning A radio programme part 1 Students plan, write & record their own radio news programme	Break	Project morning A radio programme part 2 Students listen to their news programmes and discuss current affairs in the UK	Lunch	Sport: Activity Group A: Water sports (kayaking, windsurfing or sailing) Activity Group B: Bowling	
Saturday	Activity Group A: Excursion to Stonehenge and Salisbury Activity Group B: Excursion to Tintagel and Boscastle					
Sunday	Free time to spend with your friends and host family					





Explorer Programme

age 6-10

Vacation Courses - Explorer

This course is for primary school children. Classes are topic based, creative, interactive and fun. There are many hands-on activities and games to build confidence and develop communication skills. Project work along with a varied and active social programme complement and develop the topics.

Explorer students are required to be accompanied by a responsible adult or an older sibling, at the school's discretion.

For more information please contact: registrar@GlobeEnglish.co.uk

“ Children and parents can take lessons at the same time, and I found it all very well organised ”

Maria Del Puig Grau, Spain

Course facts
Start date - any Monday
Age 6 -10
Level - Beginner to Intermediate
6 year olds - parents are required to supervise during activities
Duration - minimum 1 week
Number of lessons - 20 per week = 15 hours
Class times: 09.00-12.30
Average in class - 4, maximum - 10
Homework - twice a week
Course certificate and progress report
Supervised transfers from the host family to the Globe, and back to the host family
Social Programme Each week:
5 afternoons of topic related activities
2 evening activities and a Saturday excursion

Sample Explorer Programme Technology/ Design Technology – ‘We are inventors’

Day	09.00 - 10.30	10.30-11.00	11.00 - 12.30	12.30 - 13.30	Activities 13.30 - 15.30+	Evenings
Monday	'Getting to know you' activities - students find out about each other and teachers assess students' levels	Break & parents' meeting	My family - vocabulary and language for talking about your family	Lunch	Sport:: Games in the park	
Tuesday	Inventions – who invented what?'	Break	Students invent and present a new gadget for school	Lunch	Workshop: Air resistant rockets - design and build your own rocket	Cinema evening
Wednesday	Storytelling – 'Room on the Broom'	Break	Students design a new broom for the witch in the story	Lunch	Excursion: Go Ape, a treetop rope course	
Thursday	Students investigate magnetic properties of objects around the school	Break	Time capsule project	Lunch	Workshop: Tubers - create and edit a video	Magic show in school
Friday	The speed car challenge part 1 - students design and race toy cars using plastic bottles	Break	The speed car challenge part 2 - students design and race toy cars using plastic bottles	Lunch	Excursion: Simply Great Media	
Saturday	Excursion to Creaky Adventure Park, with rollercoaster workshop					
Sunday	Free time to spend with your family or your host family					





English Plus age 11+

Intensive Courses - English Plus

English Plus is an innovative and exciting programme combining general English with an activity programme or additional lessons built around specific topics. Classes are creative and interactive and aim to activate students' passive knowledge, develop their language skills and build confidence.

The English Plus programme can be designed to suit a student's particular needs. Typical courses include English plus Sports, English plus Creative Arts and English plus Curriculum subjects (English as a Second Language) – ideal for students hoping to join the British education system.

One-to-One Lessons

Students following any of our courses can request extra lessons of individual tuition in advance, or whilst they are at school. These will take place in the afternoons and are booked in double lessons (2 x 45 minute lessons).

One-to-One Programmes

Teachers can design a course to suit specific requirements according to students' needs and plans, for example, school entry exams.

Course facts (English Plus)

Start date - on demand

Age 11+

Level - Elementary to Advanced

Duration - minimum 1 week

Average in class - 6, maximum - 14

Course hours - minimum 19.5 to include:

General English

Subject studies

Lessons at our partner schools intergrated with British children

Homework - daily

Test on the first day

Support of course tutor

Course certificate & progress report

Social Programme Each week:

2 cultural outings/sports

2 evening activities and a Saturday excursion

Sample English Plus Curriculum Subjects (ESL): eg History

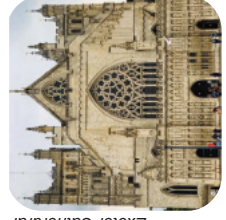
Day	09.30 - 11.00 Language Skills	11.00 - 11.30	11.30 - 13.00 Communication Skills	13.00 - 14.00	14.00 - 16.00+ Social Programme	Evenings
Monday	Welcome talk: Social English for getting to know you	Break	Role play: Going shopping & Directions	Lunch	Culture: Visit The Royal Albert Memorial Museum	
Tuesday	Focus on Past Tenses	Break	Creative Writing: Myths & Legends of Dartmoor	Lunch	Lessons: History: The Kings and Queens of England	Private disco
Wednesday	Visit to a local school for tour and class observations	Break	Visit to a local school for tour and class observations	Lunch	Lessons: History; Inventions of the Victorian era	
Thursday	Focus on question formation & survey in town	Break	Presentations of survey results	Lunch	Lessons: History; The Romans in Exeter	Theatre evening
Friday	British Customs: Food & Drink	Break	Project: Roman Food	Lunch	Visit: To Powderham Castle	
Saturday	Excursion: Visit to Bristol and SS Great Britain					
Sunday	Free time to spend with your friends and host family					



Royal Albert Museum



Exeter Cathedral



Powderham Castle



Curriculum Programme age 11+

Mini Stays - Curriculum

The following course is designed for students from the same establishment or institution who have a common and specific purpose for studying.

Curriculum programmes combine general English with topics from the school curriculum (history, geography, literature etc), as chosen by the group organiser or selected from our current list of topics. The course combines 15 hours tuition with a full activity programme. Those preferring a more intensive programme can choose additional afternoon lessons.

Our classes are interactive and communicative and use CLIL methodology to teach language, content and knowledge. Visits and activities are planned to complement the topic areas.

“Thank all of you for the lovely week we spent at the Globe, also on behalf of my colleague. Everybody was really helpful, patient and kind and made our stay a memorable experience. Needless to say we hope to come back again”

Isabella, I.I.S M.K. Gandhi. Italy

Course facts

Start date - On demand

Age 11+

Level - Lower Intermediate to Advanced

Duration - minimum 1 week

Number of lessons -
20 per week = 15 hours

Maximum in class - 15

Afternoon visits related to curriculum subjects or additional classes as required

Homework - daily

Course certificate

Social Programme Each week:

1 evening activity per week

Sample Curriculum Programme – Literature and Storytelling

Day	09.30 - 11.00 Lessons	11.00 - 11.30	11.30 - 13.00 Lessons	13.00 - 14.00	14.00 - 16.00+ Activities	Evenings
Monday	Police video on staying safe in the UK Getting to know you activities	Break	Narrative tenses Types of literature Matching story extracts	Lunch	Prize trail to get to know Exeter better	
Tuesday	Modern fairy tales Reading - Little Red Riding Hood and the Wolf by Roald Dahl Listening - a Roald Dahl Story	Break	Focus on poetry and creative writing	Lunch	Storytelling workshop with a local writer	Theatre visit
Wednesday	Myths and Legends of Dartmoor	Break	The Hound of the Baskervilles	Lunch	Afternoon excursion to Dartmoor National Park (linked to Arthur Conan Doyle)	
Thursday	Shakespeare project part 1	Break	Shakespeare project part 2	Lunch	Theatre workshop with a local theatre company	
Friday	Murder mystery – the Escape Room Challenge part 1. Students follow the clues to solve the crime	Break	Murder mystery – the Escape Room Challenge part 2. Students follow the clues to solve the crime	Lunch	Afternoon trip to Torquay with visit to the Agatha Christie Gallery	
Saturday	Optional Excursion: Plymouth with visit to Mount Edgcumbe House or Bath with a visit of Roman Baths					
Sunday	Free time to spend with your friends and host family					



Exeter Cathedral





Exam Preparation age 11+

Mini Stays - Exam Prep

The Globe prepares students for all Cambridge exams (KET, PET, FCE, CAE and CPE) as well as the Trinity Graded Exams in Spoken English (GESE) and Integrated Skills Exam (ISE). This course comprises 22.5 hours of tuition each week and can include a full mock exam if requested.

Classes focus on exam techniques, academic skills and on building students' confidence. The Globe is a Trinity exam centre and groups can take exams here at any time of year. Groups can also take Cambridge exams locally at set times in the year. Exam fees apply.

For more information please contact:
groups@GlobeEnglish.co.uk

“ Thank you very much for making this group successful. I got very good feedback, especially with host family and we were happy with very good management of class rooms. ”

Sulawan, Key Education, Thailand

Course facts

Start date - On demand

Age 11+

Level - Elementary to Advanced

Duration - minimum 1 week

Number of lessons -
30 per week = 22.5 hours

Class times: 09.00-15.00

Mock exam on request

Homework - daily

Maximum in class - 15

Course certificate

Social programme Each week:

1 sports afternoon (optional)

2 cultural afternoons (optional)

1 activity evening

Sample Examination Preparation Programme : eg Cambridge First (FCE)

Day	09.00 - 10.30 Lessons	10.30 - 11.00	11.00 - 12.30 Lessons	12.30 - 13.30	13.30 - 15.30+ Activities	Evenings
Monday	Police video on staying safe in the UK Getting to know you activities Speaking parts 1 and 2	Break	Overview of exam Tense review	Lunch	Introduction to reading paper and techniques	
Tuesday	Language for giving opinions Introduction to essay Focus on Speaking part 3 and 4	Break	Focus on Use of English Word formation and transformations	Lunch	Introduction to listening paper and techniques Formal vs informal letters and e-mails 15.30 optional: Mock reading paper	Private disco
Wednesday	Narrative tenses Writing stories and reviews	Break	Focus on Use of English Multiple choice and gap fills	Lunch	Speaking parts 1 and 2 Language of comparison 15.30 optional : Mock writing paper	
Thursday	Focus on Use of English	Break	Paragraphing, punctuation and discourse markers in writing Writing articles	Lunch	Development of topic Vocabulary 15.30 optional mock listening and speaking	
Friday	Focus on Speaking parts 1-4	Break	Revision essay writing Key phrases and use of adverbs	Lunch	Feedback from mocks / exam review Do's and Don'ts Error correction in writing	
Saturday	Optional Excursion: River boat cruise from Dartmouth to Totnes					
Sunday	Free time to spend with your friends and host family					





Future Careers age 16+

Mini Stays - Future Careers

This is a vocational course combining 15 hours of study in the students' specialist area with visits to local companies and talks/workshops related to their field of interest.

Classes aim to activate students' passive knowledge, develop language skills and build confidence. We focus on communication and use authentic materials and role play to give students practice in using their English in work related situations.

All visits are prepared for thoroughly in class and students are encouraged to ask questions and give presentations and feedback on the visits.

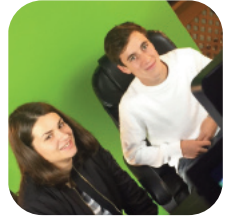
Previous clients have chosen:

- English for Travel and Tourism
- English for Hotels and Catering
- English for Business and Marketing
- English for Trainee Secretaries and Personal Assistants
- English for Education
- English for Social and Childcare

Course facts
Start date - On demand
Age 16+
Level - Intermediate to Advanced
Duration - minimum 1 week
Number of lessons - 20 per week = 15 hours
Class times: 09.00-12.30
Maximum in class - 15
Homework - daily
Course certificate
Social programme Each week:
Minimum 3 afternoons of work related visits
2 cultural/sports afternoons
1 evening activity

Sample Future Careers Programme – Travel and Tourism

Day	09.00 - 10.30 Lessons	10.30 - 11.00	11.00 - 12.30 Lessons	12.30 - 13.30	13.30 - 15.30+ Activities	Evenings
Monday	Police video on staying safe in the UK Getting to know you activities	Break	Tense review Integrated skills: The best and worst hotels in Britain	Lunch	Prize trail to get to know Exeter better	
Tuesday	Innovation in Business Team task part 1 – students invent a product or service and carry out market research	Break	Innovation in Business Team task part 2 – students create a marketing campaign and pitch their product to other teams	Lunch	Visit to Kents Cavern with a talk on marketing and a tour of the caves	Sport: Clip 'n Climb
Wednesday	Survey in town on tourism Presentation of results of survey	Break	Advertising in the 21st century Designing an e-brochure to promote Devon	Lunch	Visit of a local hotel	
Thursday	Formal and informal letters: job related vocabulary How to write a CV	Break	Listening : A job interview Roleplay job interviews Making a video CV	Lunch	Visit of Bickleigh Castle with tour and talk on events management	
Friday	The Paper clip challenge – students use their negotiating skills to exchange their paper clip for different products	Break	The Paper clip challenge – students use their negotiating skills to exchange their paper clip for different products	Lunch	Sport activity: bowling Or Talk from a guest speaker	
Saturday	Optional Excursion: Cardiff with a visit to Cardiff Castle or Glastonbury Abbey					
Sunday	Free time to spend with your friends and host family					





Work Placement age 16+

Work Experience Programmes

The Globe recommends that all students following a Work Trial (Groups) or Work Experience Programme (Individuals) take a minimum 1 week Discovery course prior to starting the placement to prepare them and to build confidence and develop communication skills

Work Experience (Individuals)

Work experience is a fantastic opportunity for students to practise their English in an authentic working environment, and strengthen their existing language skills away from the classroom.

Work Trial (Groups)

This programme gives young people, (from educational establishments) an opportunity to improve their English in a general working environment and to develop their life skills.

The Globe looks for placements matching career objectives. The companies providing the placements must comply with national regulations and health and safety standards. Students will be given guidance whilst adjusting to their new environment, as well as continued support for the duration of the placement.

Typical placements include shops, hotels and restaurants. Trainees must be realistic in their expectations of what they may/may not be able to do whilst on placement. The Globe will support students throughout their placement.

Course facts
Start date - any Monday
Age 16+
Level - minimum Intermediate (B1)
E.U. Nationals
Duration - 1 week minimum
Support from Globe during placements
Social programme Each week:
Work Trial (Groups): 1 social evening
Work Experience (Individuals): 2 evening activities and a Saturday excursion

Sample Work Experience Programmes (Individuals)

Sample Work Experience Programme (Individuals)

Day	Morning	Afternoon	Evenings
Monday	Work placement	Work placement	
Tuesday	Work placement	Work placement	Private Disco
Wednesday	Work placement	Work placement	
Thursday	Work placement	Work placement	Sport: Clip 'n Climb
Friday	Work placement	Work placement	
Saturday	Excursion to Plymouth, with a visit to the National Marine Aquarium		
Sunday	Free time to spend with your friends and host family		



Sample Work Trial Programme (Groups)

Day	09.00 - 10.30	Daytime	Evenings
Monday	Meeting at the Globe with the Work Placement Coordinator	Work placement	
Tuesday	Work placement	Work placement	
Wednesday	Work placement	Work placement	
Thursday	Work placement	Work placement	Sport: Clip 'n Climb
Friday	Work placement	Work placement	
Saturday	Excursion to Plymouth, with a visit to the National Marine Aquarium		
Sunday	Free time to spend with your friends and host family		

“Students enjoyed their placements, they benefitted on many levels - professional and personable”

Dorota, English Consulting.

Poland

GL GLOBE ENGLISH CENTRE

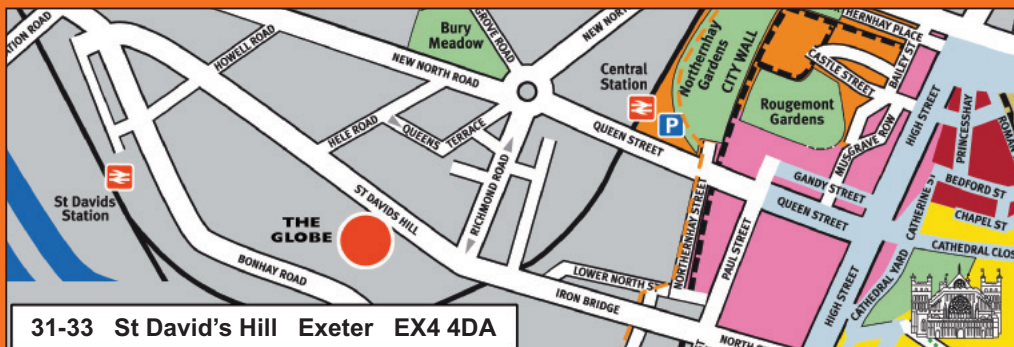
Accredited by the
BRITISH COUNCIL
for the teaching
of English in the UK

We prepare for
Cambridge
English Qualifications

SOUTH WEST
ENGLISH
UK

TRINITY
COLLEGE LONDON
Registered Exam Centre 56897

IALC



31-33 St David's Hill Exeter EX4 4DA

- Exeter is around 2 hours by train and 3 hours by motorway from London and is an ideal base for touring South West England
- All main public transport routes are direct to Exeter. The Globe offers meeting services in most international ferry ports and airports
- The Globe can advise and make all travel and accommodation reservations
- All students are met on arrival in Exeter

31-33 St David's Hill Exeter Devon EX4 4DA Tel: +44 1392 271036 Fax: +44 1392 427559
study@GlobeEnglish.co.uk www.GlobeEnglish.co.uk

Globe English Centre Ltd. Registered in England No. 3987028