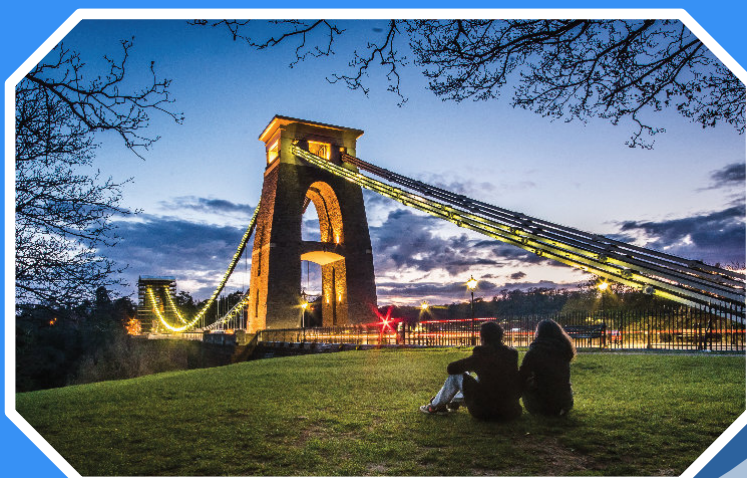




# The English Language Centre Bristol



**The joint number 1 English language school in the UK\***

\* According to the EL Gazette rankings based on British Council inspectors' publishable statements





PEMBROKE HOUSE

# THE SCHOOL

Established in 1969, The English Language Centre Bristol is a family-run school and a Centre of Excellence. We offer intensive General English and Examination Preparation courses. We have been accredited by the British Council for the Teaching of English in the UK. We are members of IALC (International Association of Language Centres) and Quality English. The school is also a member of The English Network (TEN), a group of 10 independent schools that share best practice and have a reputation for quality and personal service.



ABON HOUSE



ANDREW EDWARDS (PRINCIPAL) and JOHN DUNCAN (DIRECTOR)

The school is located in two fine old buildings close to the University in Clifton, one of Bristol's most attractive areas.

*We believe that personal care and attention are essential and we will do everything we can to ensure that your stay in Bristol is one of the most productive and enjoyable times in your life.*

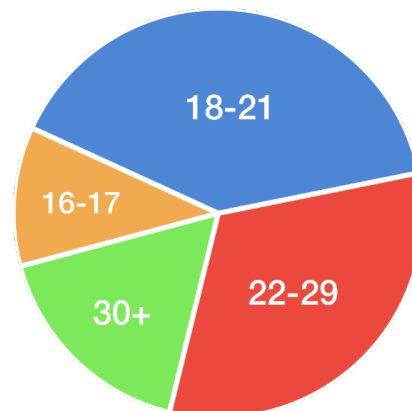
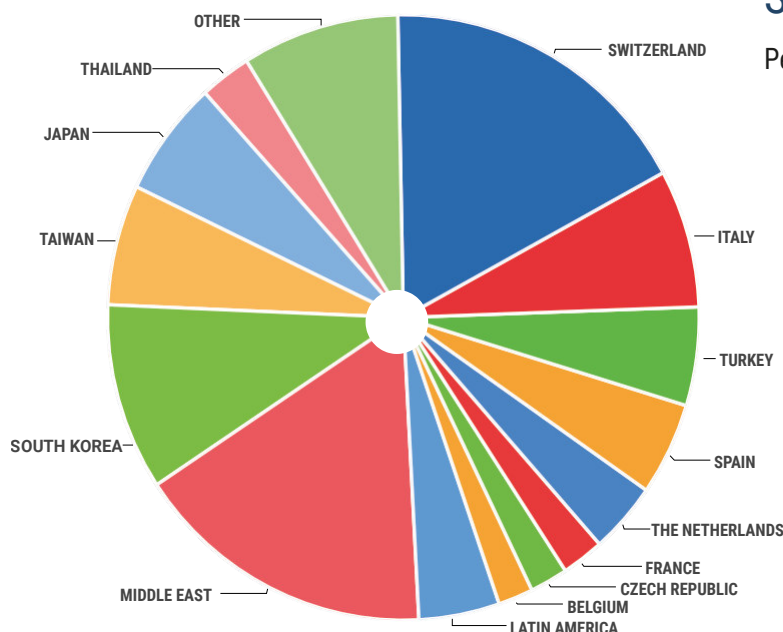


# OUR STUDENTS

2

## Student Nationalities 2019

Percentages fluctuate according to season

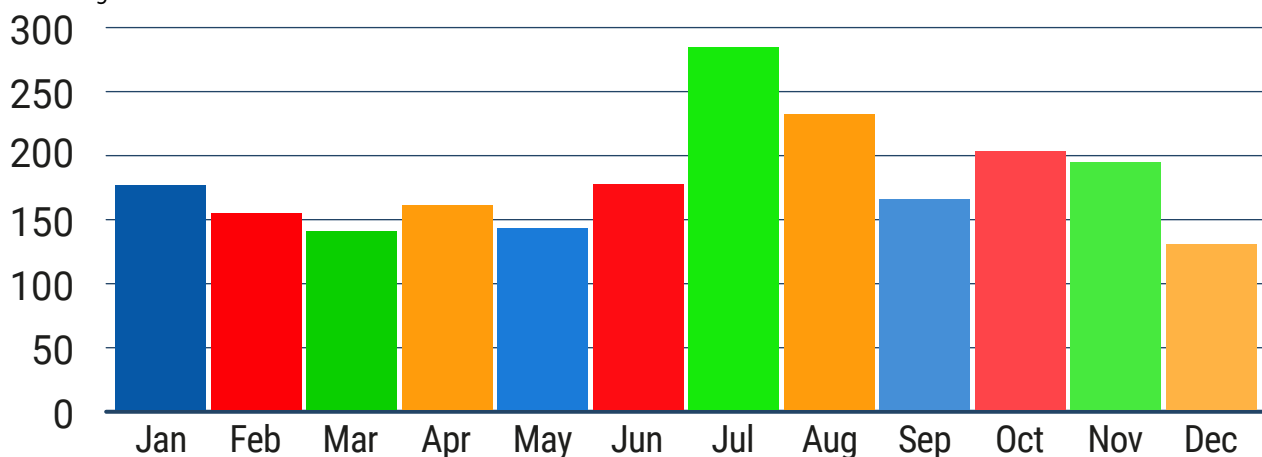


## Student Ages 2019

Average age: 23 Minimum age: 16 No maximum age

## Student Numbers 2019

An average of 184 students from 26 different countries



*I am happy to be learning English at ELC. The teachers are really friendly and good natured. I like the social programme activities because I can make new friends.*

*I also think Bristol is a perfect place for studying because there are a lot of things to enjoy.*

Mayuko from Japan





3



CLIFTON - a number of parks and open countryside are within walking distance of the school

# BRISTOL

With a population of around 450,000 and two major universities, Bristol is the second-largest city in the South after London, which is less than two hours away by train.

Bristol is a lively student city, well-known for its nightlife, theatres, shopping, music scene and street art. The lively harbourside is popular with our students, and there is a wide choice of international restaurants in the city.

Bristol has all the attractions of a major city but it is easy to live here as most places of interest are located within walking distance, and you are not dependent on public transport.



BANKSY STREET ART



BRISTOL HARBOURSIDE - a cool place to hang out with its many restaurants, bars and nightclubs



## TRAVEL AROUND THE UK & EUROPE

Bristol has major transport links and is conveniently placed to make day trips to popular destinations like London, Bath, Oxford, Cardiff, Stonehenge and Windsor Castle.

Bristol International Airport has flights to 122 cities in 37 countries. As well as making it easy to get here, it offers our students a great opportunity to visit other European destinations.



Bristol hosts many festivals through the year. 250,000 people visit the city over the weekend of the Harbour Festival! There are several stages for live music, dance, acrobatics and other performing arts. Other popular events are Bristol Pride, Upfest, Foodies Festival, and Bristol International Balloon Fiesta, the largest balloon gathering in Europe.







ELC STUDENTS AND TEACHER

# COURSES

- Courses include 21 full hours of classroom time per week plus daily homework.
- There are 7 levels from A2 (Elementary) to C2 (Advanced), with several classes at most levels.
- On the first day, we test you so that we can place you in a class at the right level.
- Average class size: 10. Maximum: 14.
- As part of your course, depending on your level, you can prepare for the Cambridge English First, Advanced and Proficiency exams, or IELTS.
- Normal minimum enrolment: 2 weeks (General English), 4 weeks (exam preparation)

## LEVELS

CEFR *	Level	IELTS **	Cambridge Exam **	
A2	Elementary Pre-Intermediate			Basic user
B1	Intermediate	4 - 5	Cambridge English: Preliminary (PET)	Independent user
B2	Upper-Intermediate	5 - 6.5	Cambridge English: First (FCE)	
C1	Pre-Advanced	6.5 - 8	Cambridge English: Advanced (CAE)	Proficient user
	Advanced			
C2	Advanced +	8 - 9	Cambridge English: Proficiency (CPE)	

\* Common European Framework

\*\* Details of exam dates and fees are in the enrolment form.





BREAK TIME AT ABON HOUSE

## Included in the programme

- Personal study programme with 4 hours' optional supervised self-study per week.
- Course book every 3 months, supplementary teaching materials and a leaving certificate.
- E-learning service from the moment you enrol until 3 months after you leave.
- On two afternoons a week, if your level is B2 (upper-intermediate) or above, you can choose from a range of electives including Business English, Academic English and Sports. During this time, lower level students focus on developing communication skills.
- After classes have finished, optional free language activities are arranged twice a week, such as Conversation Club, Job Club, Singing Club and Friday Film Club.

## SAMPLE TIMETABLE

28 Lessons (21 Hours) a week

9.15	10.00	10.45	11.15	12.00	12.45	14.00	14.45	15.30	15.45	16.45		
<b>Grammar</b>  using a recently published course book	<b>Listening/ Pronunciation practice</b>  can include work in the multimedia centre	Break	<b>Reading Skills &amp; vocabulary building</b>	<b>Speaking skills &amp; vocabulary building</b>	Lunch Break	<b>Monday &amp; Wednesday</b>		<b>Optional</b>  Supervised self-study <b>Monday-Thursday</b>  2 activities a week such as: Conversation Club Job Club Singing Club and Friday Film Club				
						Writing / exam Practice					Listening & Study Skills	
						<b>Tuesday &amp; Thursday</b>					<b>Levels A2 - B1</b>	
						Speaking & Pronunciation					Listening & Vocabulary	
						<b>Levels B2 - C2</b>						
						Electives		Electives				





ELC Bristol's examination pass rate is higher than the national average

# EXAMINATION PREPARATION COURSES

- Cambridge English: First (FCE), Advanced (CAE), Proficiency (CPE) and IELTS.
- Minimum period of enrolment: 4 weeks.
- You should be at least B2 level before joining an IELTS class or a Cambridge First Certificate class.
- 21 hours per week (including elective classes).
- You can take the IELTS or Cambridge exams in the local examination centres.

 **Cambridge English**  
Exam Preparation Centre

## IELTS - How long will it take?

You generally need an IELTS score of 6.5 before going to university or 5.5 if you wish to take a foundation or pre-session course. Based on our students' results, it takes around 12 weeks of full-time study to improve your IELTS score by 1 point.



	Pre-Intermediate	Intermediate			Upper-Intermediate			Pre-Adv. / Advanced		
Courses	General English	IELTS preparation / Academic English Electives								
CEFR Level	A2	B1			B2			C1		
IELTS score		4.0	4.5	5.0	5.5	6.0	6.5	7.0	8.0	8.5
					</					





During July and August, lunch is an option in the Summer Centre for all our students

# SUMMER COURSES

The summer courses are run in the same way as our courses throughout the year, with intensive General English and examination preparation available together with additional language activities and a varied and exciting social programme.

The courses include 21 full teaching hours per week plus daily homework.

During July and August we open an additional study centre in Clifton College with spacious classrooms, a beautiful garden and wonderful facilities.



THE SUMMER CENTRE

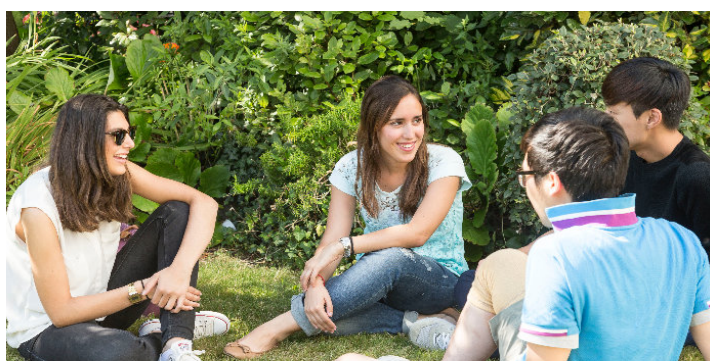


SUMMER CENTRE STUDENTS

The summer centre is located in Clifton College, 2 minutes' walk from Pembroke House.



SUMMER CENTRE GARDEN



ABON HOUSE GARDEN

During the summer courses, you may be taught in the Summer Centre, Pembroke House or Abon House.





WELCOME DRINKS PARTY

# SOCIAL PROGRAMME

An exciting social programme is arranged every week of the year.

It includes regular sports, a minimum of two evening activities a week and an excursion on Saturdays.

The programme is organised by our teachers and is a great way to see the country, explore the local area, make new friends and practise your English.

## Free Activities

Could include: School Parties, Film Club, Conversation Club, Banksy Street Art Trail, Karaoke, Bristol Balloon Fiesta, Bristol Harbour Festival, Shopping trip to The Mall

## Paid Activities

Could include: American Pool and Darts (£5), Opera/Ballet at the Hippodrome (£12-16), Laser Fusion (£9), Tour of BBC Studios (£10), Golf (£8), Bowling (£9), Salsa (£3), Harbour Cruise (£9), Bristol Zoo (£10), SS Great Britain (£12), Paintball (£25), live music (£15-20), Beatboxing Workshop (£7)

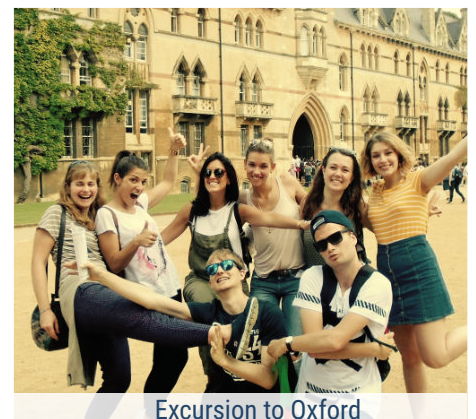
## Weekend Excursions

Could include: London (£23), Oxford (£20), Bath & Roman Baths (£25), Stonehenge, Avebury & Salisbury (£33), Cambridge (£25), Longleat House and Safari Park (£30)

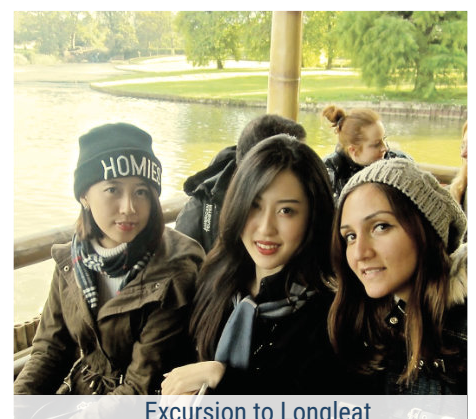
\*Prices are subject to change



Excursion to London



Excursion to Oxford



Excursion to Longleat



ELC 50<sup>th</sup> ANNIVERSARY PARTY

## BRISTOL UNIVERSITY STUDENTS' UNION

With more than 50,000 students, Bristol is well-known for its nightlife and music scene.

A special advantage for ELC students is that, if you become an Associate Member of the Students' Union, you can also join many of the University Students Union's clubs and societies during the academic year - the perfect way to make English-speaking friends!

Excursion to Bath



SS Great Britain



Football with the teachers



Oxford Fun Run



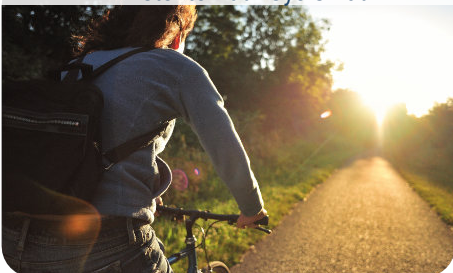
School Party



Excursion to Stonehenge



Bristol to Bath Cycle Path



Clifton College Swimming Pool



Clifton College Gym



You have access to Clifton College's gym and swimming pool throughout the year.





HOMESTAY FAMILY AND STUDENTS

# ACCOMMODATION

- Almost all of our accommodation is located within walking distance of the school.
- ELC Bristol is in Clifton, one of the most attractive parts of the city.
- We arrange the accommodation ourselves and don't use an agency.
- 55% of our students live in homestays, 35% live in independent student houses and apartments and 10% find their own accommodation.

## HOMESTAY

Homestay accommodation includes bed (single room), breakfast and an evening meal.

Staying with one of our homestays is the best way to experience the British way of life.

The average time to walk to school is 20 minutes. During July and August, we occasionally place students with families who live outside our normal catchment area. These students may have to take a short bus ride to come to school (maximum 15 minutes).

If you choose to travel by bus, the cost of a weekly bus pass is currently £13.25 via the First Bus app with an ELC Bristol student card. (Cost subject to change).



HOMESTAY STUDENT BEDROOM





ST. JOHN'S HOUSE

## SELF-CATERING HOUSES & APARTMENTS (18+)

Self-catering accommodation is very popular at ELC Bristol. Some students like to be independent and cook for themselves instead of living with a homestay family.

In self-catering accommodation, you will be living with other students from the school in student houses, smaller apartments or our larger student residences. All of our self-catering accommodation is within 20 minutes' walk of the school.



CLYDE COTTAGE

## SUMMER UNIVERSITY RESIDENCE (18+)

This self-catering residence is located just 5 minutes from the harbourside and 22 minutes' walk from school or an easy 10-minute journey by bus.

Flats are shared only with other ELC students, who are aged 18 or over. All rooms are en suite.

The residence has a student lounge with pool table, table football, large screen TV, table tennis, quiet study room and on-site bike storage.



BEDROOM WITH EN-SUITE

## YOUNG ADULT SUMMER RESIDENCE (16-17)

All rooms are fully-furnished lockable study bedrooms arranged in flats with 7 bedrooms. Flats are shared only with other ELC students under 18, plus the residence manager. The bedrooms are fully en suite. This residence is half-board, with breakfast provided in the residence and dinner in a local international restaurant daily.

The residence has a student lounge with pool table, table football, large screen TV, table tennis, quiet study room and on-site bike storage.



RECEPTION AREA





# JOB CLUB

- Bristol is a relatively wealthy city and has the joint-highest employment rate amongst the UK's core cities.
- Students from the EEA (European Economic Area) and those with a Tier 5 Youth Mobility Scheme visa have the right to work in the UK.
- ELC runs a free Job Club giving advice and the language needed to help you find casual and part-time employment.
- ELC Bristol is able to put you in contact with a company which organises professional internships in Bristol and other cities including London, Oxford and Brighton.

## TESTIMONIALS



I've spent the last 3 months here at ELC, and they have completely flown by because I have enjoyed every single moment in Bristol. Thanks to the teachers for their kindness and helping me to improve my English. In this school, there is such a great friendship between teachers and students. You can chat with them about anything. One of the most important activities is the social programme, which can help students make friends more quickly.

**Mattia from Italy**



I recommend ELC Bristol because the school is very nice. I'm staying with a British family, and they're very friendly and kind. Also, I've met a lot of people from different countries, and I hang out with them often. I'm really enjoying this experience.

**Julia from Brazil**



On the first day of school, the Principal told us that ELC would be our family in Bristol. I realized, after a while, that all the ELC staff make you feel at home. ELC is like a big door which opens up the world. We come here to learn English, but ELC is more than that because you can experience many different cultures and make beautiful friendships, especially on the social programme excursions.

**Naif from Saudi Arabia**



I'm 32-years-old, and I had never spoken to anyone in English before I came here. In 3 months, I have learnt enough English for a normal conversation. It makes me really happy, and I feel proud. I have met people from different countries, and it has improved my cultural awareness. Not only have I learnt English, but I have also made a lot of friends from all over the world. The experience has been awesome, and I am very thankful for that.

**Alfonso from Spain**





# A few good reasons for studying at ELC Bristol

## **Number 1**

It is the joint-number 1 English language school in the UK according to the EL Gazette's rankings, based on the British Council inspectors' publishable statements.

## **Teachers**

Our dedicated teachers have an average of more than 20 years' experience and our Cambridge exam pass rates are better than the national average.

## **Accommodation**

Most of our accommodation and many attractions are within walking distance of the school.

## **Social Life**

Bristol is a lively university city and our students can join many of the Students' Union's clubs and societies – the perfect way to make English friends.

## **Bristol Airport**

Bristol International Airport has flights to 119 cities in 36 different countries, so it is easy to get here and a big advantage if you want to visit other European cities. Bristol is also well located for day trips to London, just 1 hour 40 minutes by train.

# A message from John and Margaret

We would love to welcome you to ELC Bristol. It is a family-run school which prides itself on caring for each individual student. If you come, our team of dedicated teachers and staff will do everything they can to ensure that you have one of the most enjoyable and productive times in your life.

John and Margaret.





# How to get here

From Bristol Airport

25 minutes



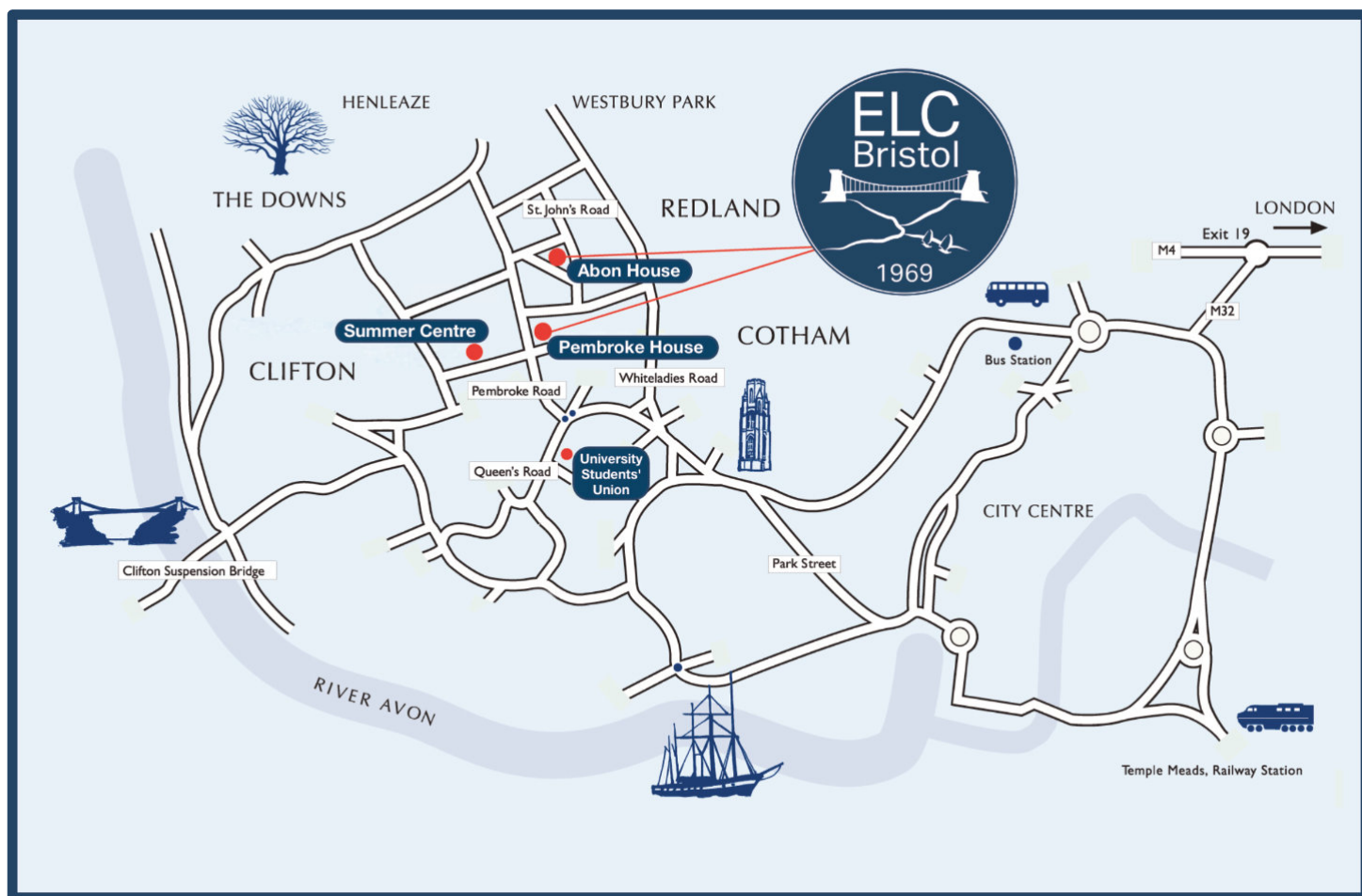
From London Heathrow

2 hours



From London Paddington

1 hour 40 minutes



ELC Bristol Ltd., Reg No: 10027743 (England & Wales)  
44 Pembroke Road, Bristol, BS8 3DT, UK  
Tel: +44 117 970 7050 | Fax: +44 117 923 9638  
info@elcbristol.co.uk | www.elcbristol.co.uk

