

# F+U Academy of Languages



## 2021/2022



Programme valid from 01.10.2021



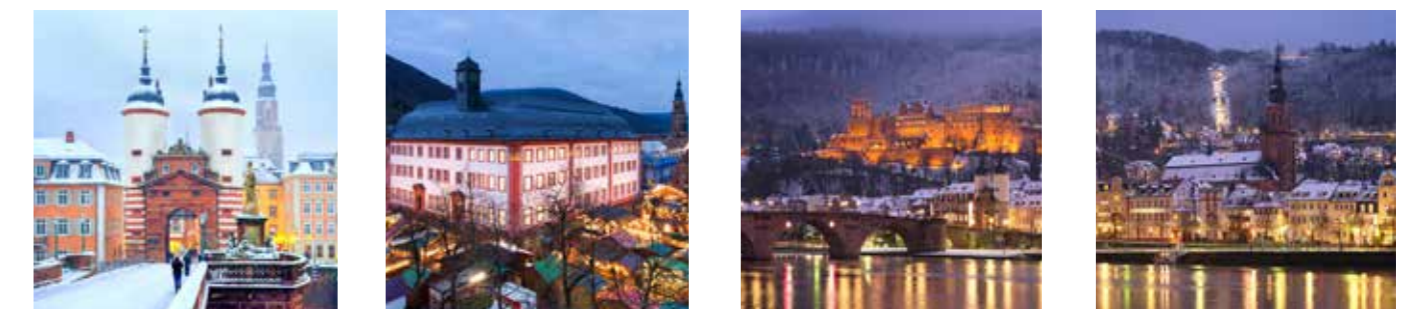
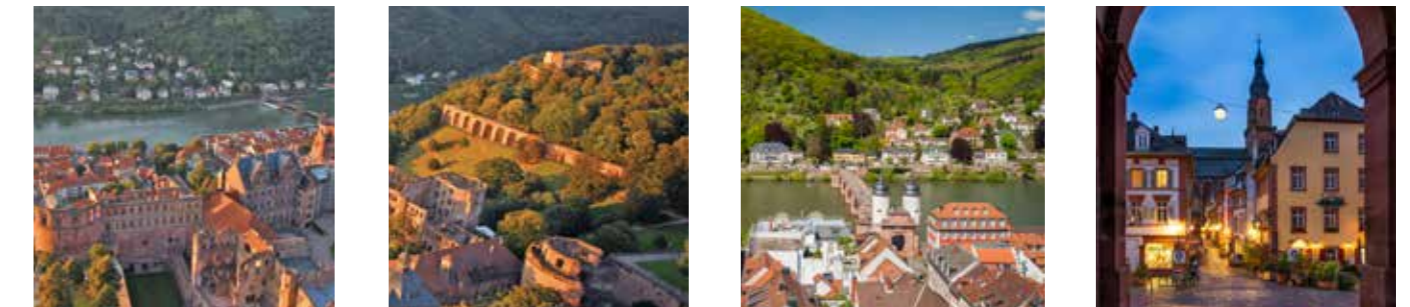
In-class, online and hybrid language lessons  
Vocational college for foreign languages  
International test centre  
Accommodation



 **Academy of Languages  
Heidelberg**




Heidelberg – at the heart of Europe .....	3	<b>Group packages for young people and adults</b> .....	25
Heidelberg – city of romanticism and science .....	5	German and English courses .....	25
F+U Academy of Languages Heidelberg.....	6	Accommodation and meals.....	25
Why F+U? Top features at a glance.....	7	Transfer to / from accommodation .....	26
Cultural programme at the F+U Academy of Languages – highlights.....	8	Cultural programme .....	26
<b>Common European Framework of Reference for Languages (CEFR) levels</b> .....	11	<b>Junior programme</b> .....	28
International test centre .....	13	Summer courses German and English (6-17 years) .....	28
General information .....	15	Youth campus 24.....	29
<b>Individual courses (in-class, online, in-house)</b> .....	17	German courses in winter for junior learners (12-17 years) .....	30
<b>German courses for adults</b> .....	18	English courses in the school holidays (6-15 years) .....	31
Our classic courses.....	18	German and English courses – all year (3-10 years) .....	31
Special courses .....	19	Russian Academy for children (1-14 years).....	33
Evening courses.....	20	School tuition for pupils in all classes.....	34
Learners' home countries: German courses .....	20	Special services and courses, cultural programme.....	35
<b>Combination course German plus English</b> .....	21	<b>Accommodation</b> .....	
<b>English courses for adults</b> .....	22	City map, apartments, sights .....	36
Our classic courses.....	22	Accommodation prices – host families.....	38
Special courses .....	22	Accommodation prices – halls of residence, categories.....	39
Evening courses.....	23	Guest houses, hotels, meals, transfer, parking.....	41
Learners' home countries: English courses .....	23	Halls of residence, apartments – information.....	42
<b>Educational leave / compact courses (five languages)</b> .....	24	<b>Education partners of the F+U Academy of Languages</b> .....	44
		<b>Dual study (bachelor / master)</b> .....	46
		<b>Study in Germany with language level A2</b> .....	47
		<b>Vocational college for foreign languages</b> .....	49
		<b>Participant statistics</b> .....	51
		<b>Addresses, service numbers</b> .....	52



## Academy of Languages Heidelberg

F+U Academy of Languages gGmbH  
 Hauptstrasse 1  
 D-69117 Heidelberg  
 Tel. +49 6221 7050-4048  
 Fax +49 6221 23452  
 languages@fuu.de

 Telephone service 24/7: +49 6221 9120-38  
[www.academy-languages.de/en](http://www.academy-languages.de/en)

Photos: F+U Academy of Languages, stock.adobe.com, istockphoto.com, shutterstock.com

### Test centre, memberships





## Heidelberg – city of romanticism and science

Heidelberg, once the capital of the Palatinate and the spiritual centre of Calvinism, nestles in the picturesque Neckar valley and is known for its particularly mild climate. Over the years, Heidelberg's beauty has attracted a number of poets, painters and scientists. In the early 19th century, the city on the Neckar became the most important **centre of German late romanticism**, and is inextricably linked with the poets Arnim, Brentano, Goethe and Eichendorff.

The **Ruprecht-Karls University of Heidelberg** was founded in 1386 and is Germany's oldest university. In 2019 its status as a university of excellence was confirmed once again in the national Excellence Initiative. The university has therefore retained its leading position among Germany's institutes of higher education. Alongside Munich's LMU and TU, Heidelberg University is traditionally recognised as one of the three best universities in Germany by the most renowned university rankings (Times Higher Education World, Shanghai Ranking, QS World University Ranking).

Many monuments reveal the Neckar city's diverse history. The city's most famous landmark stands on Königstuhl mountain and overlooks the river Neckar, some 70 metres below. The **ruins of the Elector's castle** are one of the most impressive sights on any visit to Germany (in 2019, the castle was among Germany's most popular destinations for international holiday-makers). Visitors climbing up to the castle first pass through the gate into the famous '**Hortus Palatinus**' garden, created at the beginning of the 17<sup>th</sup> century. From the castle garden, there is a breathtaking view of Heidelberg, including the **Philosophers' Walk** on the opposite bank of the Neckar. Fascinating buildings dating back to a variety of epochs surround the inner courtyard.

Situated in the Elector's wine cellar is the world's largest barrel, which was once filled with wine. It has rarely failed to impress – except in the case of **Perkeo**, the barrel's gnomish guard. Once, when asked if he could drink the barrel dry, his answer was a nonchalant 'perché no' – why not? – which is how he came to earn his name.

The baroque townhouses and their ornamental facades and doorways are a striking feature of any walk round the **Old Town**. The heart of the Old Town is the market place, between the Evangelical **Church of the Holy Spirit** and the grand renaissance building 'Zum Ritter'. Pubs and restaurants line the old alleyways leading away from the church. Spanning the Neckar is the **Old Bridge**, one of the most beautiful stone bridges in Germany. Not far from University Square is the **Jesuit Church**. Built in the early 18th century and adorned with several figures of the Virgin Mary and saints, the church is the Old Town's symbol of Catholicism, which regained its foothold in Heidelberg following the upheaval of the Thirty Years War and the Palatine War of Succession.

The wooded hills around Heidelberg cloak the city in a stunning green. There is also plenty to explore in the surrounding area, including the Neckar valley forts, the German wine route, the ancient cultivated landscape along the Upper Rhine and the hills of the Odenwald and Black Forest.

Proximity to Frankfurt, Karlsruhe/Baden-Baden and Stuttgart airports means Heidelberg is easily accessible to its guests from all over the world.

Heidelberg is synonymous with tradition and romanticism, but is also a modern, world-class **science and business centre**. The city is home to the tradition-steeped university, the Academy of Sciences, the German Cancer Research Centre (DKFZ), four Max Planck institutes, the European Laboratory for Molecular Biology (EMBL), the Centre for Asian and Transcultural Studies (CATS), the Print Media Academy of Heidelberger Druckmaschinen, the SAS Institute and several research centres belonging to international companies. This cluster of the sciences is unparalleled in Germany and forms the foundation for a dynamic, science-orientated economy that elevates Heidelberg – despite a population of just 160,000 – to its position as one of Germany's leading economic centres.

Heidelberg is also one of Germany's leading **cultural centres**, as demonstrated by its wealth of museums and theatres. Literature is ever-present in the city and since December 2014 Heidelberg has been a **UNESCO City of Literature**. Together with the neighbouring cities in the Rhine-Neckar metropolitan area (which also includes Mannheim, Ludwigshafen, Speyer, Schwetzingen and Worms), Heidelberg offers an array of nationally significant cultural events. See also the events calendar for the Rhine-Neckar metropolitan region on page 8.



The library is the landmark of the Ruprecht-Karls University



Jesuit Church in Heidelberg, built from 1712 to 1759



## International language school

The F+U language school is situated in the historic centre of the university city, just a few metres from the Neckar. The school building offers fantastic views of the Old Town, the castle and the Neckar valley.

Today, the F+U Academy of Languages is one of the largest language schools in Germany. Every year, over 10,000 language learners and exam candidates participate in the language courses and examinations, and learners from over 100 countries take part in the German courses. Thanks to its **internationality**, the school gives learners a unique opportunity to meet other people and to find out more about their language and culture, and to practise new language skills – between classes or during a break in the atrium, for instance, or when taking part in the cultural and sporting activities we offer several times a week.

With 50 multimedia-equipped classrooms (up to 65 in summer), three Internet rooms with 50 PCs, free Internet access and Wi-Fi and a central location, the F+U Academy of Languages offers everything you need for an exceptional learning experience in Heidelberg.

Several halls of residence with around 370 rooms, a boarding school, apartments, a school-owned hotel and a number of host families offer year-round **accommodation** to learners from all over the world.

Specialising in German as a foreign language, the F+U Academy of Languages is one of the world's leading providers of German courses, whether in the form of intensive lessons in the mornings and afternoons, extra-occupational evening courses or individual training. We offer online lessons to give learners unable to join classes at the school the opportunity to improve their language skills.

As an **international test centre**, the Academy of Languages stands for competence in carrying out internationally recognised exams. Alongside the best-known assessments such as TOEFL®, IELTS (International English Language Testing System) and TestDaF (Test Deutsch als Fremdsprache), the language school offers the following examinations: telc (The European Language Certificates, including C1 Hochschule, Zertifikat Deutsch, Zertifikat Deutsch für den Beruf), TOEIC®, TestAS (aptitude assessment for international university applicants), WiDaF (Test Deutsch in der Wirtschaft) and OnSet (online placement test for German and English). As of 2021 we also offer the ECL exams (European Consortium for the Certificate of Attainment in Modern Languages). The ECL and telc certificates are accredited by ALTE (Association of Language Testers in Europe) and are therefore accepted by the German Embassy for visa applications.

The **intensive and evening courses** are offered throughout the year. Popular with international university applicants and learners with an interest in language and culture, the courses are also attended by employees of international companies

and research institutes such as SAP, Lufthansa, Heidelberger Druckmaschinen, HeidelbergCement, Siemens, Daimler, NEC, Heipha, Brunel, BASF, EMBL, HITS, the DKFZ, Heidelberg University and many more businesses and scientific institutes. International sports stars from the region's well-known sports clubs, including 1899 Hoffenheim, Rhein-Neckar-Löwen, USC Heidelberg and SV Sandhausen, also participate in the Academy's German courses.

The innovative **hybrid course** gives learners access to a completely new, future-orientated form of language teaching. With this type of course, learners have the opportunity to switch flexibly between face-to-face and online training at any time according to their individual needs. In the virtual classroom and in the face-to-face courses, learners are taught by experienced and highly qualified trainers. The F+U Academy of Languages tailors the course times and content to the needs of learners, whether in individual training or in groups.

The state-recognised **Vocational College for Foreign Languages** is an outstanding feature of the Language Academy. The college offers full-time programmes leading to the following qualifications: Fremdsprachenkorrespondent\*in (Foreign Language Correspondence Clerk), Europasekretär\*in (European Secretary), Welthandelskorrespondent\*in (Multilingual Correspondence Clerk) and Übersetzer\*in (Translator). F+U is the only education provider in southern Germany to offer state-recognised vocational language training for Japanese. Accreditation has also been awarded for Chinese, English, French, Spanish and Russian.

The F+U Academy of Languages offers internship programmes within the Erasmus+ framework. This EU programme gives young people the chance to participate in a language course in Heidelberg, and to then complete a workplace-based internship.



## Why F+U? Top features at a glance

- **Extensive educational competence:** F+U operates a university of applied sciences (VICTORIA), international universities of cooperative education (iba, ISBA), bilingual schools (primary school, Gymnasium), a Realschule secondary school, vocational Gymnasium secondary schools and a number of technical colleges specialising in vocational and foreign language training. Since September 2017 F+U has also offered the International Baccalaureate® diploma programme for international students.
- **International boarding school:** Accommodation for long-term minor learners aged 14 and over; in July and August also at the Youth Campus 24.
- **A dedicated 24/7 telephone service number.**
- **Test centre** for TOEFL®, IELTS, TestDaF, telc, ECL, TestAS, TOEIC®, OnSET, ECDL and other exams and tests.
- **State-recognised Vocational College for Foreign Languages.**
- **Affiliations and partnerships:** FaDaF (Fachschaft Deutsch als Fremdsprache); FDSV (German Association of Language Schools and Language Tour Operators), VDP (Federal Association of Private Schools in Germany); EALTA (European Association for Language Testing and Assessment); AOK (Allgemeine Ortskrankenkasse); Eurhodip (European Hotel Diploma); DRV (German Travel Association); Olympiastützpunkt Rhein-Neckar e.V. (Olympic Training Centre); German Youth Hostel Association.
- Year-round **guaranteed provision** for all language courses (see detailed information on page 15).
- **Large selection of rooms** in our own halls of residence, in apartments, with host families and in F+U's Bayrischer Hof hotel.
- **International atmosphere** (learners from 115 countries in 2019).
- **Central location** in one of Germany's most beautiful cities.
- **Great value for money.**



Our language school is located in the Darmstädter Hof Centrum, Hauptstraße 1 (Old Town).

## Awards





## Cultural programme at the F+U Academy of Languages – highlights



22.01.2022	Black Forest (snow) hiking
20.02.2022	Hallia Venezia Schwäbisch Hall
19.03.2022	Rothenburg o.d. Tauber
16.04.2022	Strasbourg
21.05.2022	Schwetzingen palace
18.06.2022	Ladenburg Roman town
16.07.2022	Neckar forts trip
13.08.2022	Europapark Rust
17.09.2022	Dürkheimer sausage market
22.10.2022	Goethe and shopping in Frankfurt
12.11.2022	Technical Museum Sinsheim
10.12.2022	Nurernberg Christmas market



Große Mantelgasse overlooking the Old University



Philosophers' garden above the Neckar (with view of the castle and Neckar)

## Events calendar for Heidelberg / Rhine-Neckar region – highlights

March - April	Heidelberg spring festival
April - May	Heidelberg 'Stückemarkt' drama festival
April - May	Schwetzingen palace festival
April - May	Alternative spring festival
June, July, September	Castle illuminations with fireworks on the Old Bridge
June	Heidelberg literature festival
June	Heidelberg castle festival
June - July	Mannheim summer festival
July	International street theatre festival – Ludwigshafen
July - August	Nibelungen festival – Worms
July	Festival of German film
August - September	Heidelberg autumn literature festival
September	Heidelberg autumn festival
End of September	French week
October	Enjoy Jazz, international festival for Jazz – Heidelberg
October - November	Heidelberger theatre festival
October - November	Ludwigshafen theatre festival
October - December	Heidelberg Christmas market

Subject to changes



Heidelberg Christmas market on Market Square



Castle illuminations with fireworks on the Old Bridge



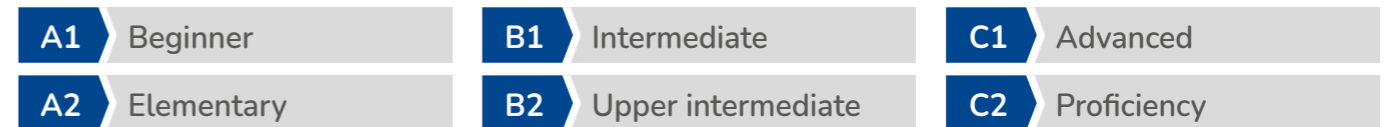
# Course levels

## Common European Framework of Reference for Languages (CEFR)

CEFR levels	TH per level	Language certificates			Course duration (one course level)
		English	German	CH, FR, IT, JP, RU, SP	
A1	160	English A1, TOEIC® 10-120 <sup>1</sup>	Start Deutsch 1	Français A1, Italiano A1, Russian A1, Diploma de Español A1	One course level consists of 160 TH, which – regardless of the intensity of the course booked – can be completed in six to eight weeks, on condition of regular attendance and follow-up of course content.  For individual lessons the total number of hours required to complete a course level is reduced by ca. 50%.
A2	160	English A2, TOEIC® 120-225 <sup>1</sup>	Start Deutsch 2, ECL	Français A2, Italiano A2, Russian A2, Diploma de Español A2	
B1	160	English B1, B1 Business, TOEIC® 226-550 <sup>1</sup> , TOEFL® 57-86	Zertifikat Deutsch, Deutsch-Test für Zuwanderer, ECL	FSK <sup>2</sup> (CH, JP, RU) Français B1, Italiano B1, Russisch B1, Diploma de Español Inicial B1	
B2	160	English B2, B2 Business, TOEIC® 551-785 <sup>1</sup> , TOEFL® 87-109	Deutsch B2, B2 Beruf, B1/B2 Pflege, TestDaF 3 (B2.1-B2.2), DSH 1, ECL	FSK <sup>2</sup> (FR +SP) Français B2, Italiano B2, Russisch B2, Diploma de Español Intermedio B2	
C1	160	FSK <sup>2</sup> English C1, TOEIC® 786-945 <sup>1</sup> , TOEFL® 110-120	Deutsch C1, C1 Hochschule, C1 Beruf, B2/C1 Medizin, TestDaF 4 (B2.2-C1.1), TestDaF 5 (C1.1-C1.2), DSH 2, ECL	Français C1, Diploma de Español Superior C1	
C2	400	Translator, English C2, TOEIC® 946-990 <sup>1</sup>	DSH 3, Deutsch C2	Translator, Français C2, Diploma de Español Superior C2	

<sup>1</sup>The test scores indicated above refer to Listening and Reading competence in the TOEIC® examination.

<sup>2</sup>FSK = programme leading to qualification as a state-recognised Foreign Language Correspondence Clerk, European Secretary or Multilingual Correspondence Clerk (Fremdsprachenkorrespondent\*in, Europasekretär\*in, Welthandelskorrespondent\*in).



CEFR levels	Listening	Reading	Speaking	Writing
A1	Can understand simple sentences.	Can understand simple sentences.	Can communicate in short phrases.	Can produce short, simple postcards.
A2	Can understand the overall meaning of short, simple, clear messages.	Can read short, simple texts, e.g. personal correspondence.	Can communicate in sentences in everyday situations.	Can produce short, simple notes, messages and personal letters.
B1	Can understand important information regarding work, free time, etc.	Can comprehend text written in everyday language.	Can participate in conversations about family, hobbies and work.	Can produce simple, connected text on familiar themes.
B2	Can follow lengthy statements and most TV programmes.	Can understand newspaper articles and literary prose.	Can communicate fluently and spontaneously.	Can produce detailed texts and effectively present an argument.
C1	Can understand lengthy statements and TV programmes without great effort.	Can comprehend complex and literary texts.	Can express thoughts fluently, spontaneously and precisely.	Can produce clear, well-structured texts on complex subjects.
C2	Can understand complex language with ease, also when spoken quickly.	Can comprehend any text with ease.	Can participate effortlessly in all conversations and discussions.	Can produce and discuss sophisticated and complex texts.

Heidelberg castle is one of the most famous sights in Germany.



## International test centre



Heidelberg Kornmarkt and the Madonna Fountain

Exam	Language(s)	Description	Dates (01.10.2021-31.12.2022)	Fees <sup>1</sup>
<b>TestDaF</b> Test Deutsch als Fremdsprache	German	Required for enrolment at German universities (equivalent to DSH)	<b>Paper-based 2021:</b> 09.11 <b>2022:</b> 24.03, 18.05, 13.09 <b>Digital 2022:</b> 17.02, 26.04, 14.06, 13.09, 10.11	€ 195
<b>ECL</b> A2-C1	German	When issuing a visa, embassies recognise the certificate as proof of language proficiency.	Dates unknown at the time of going to press.	€ 160
<b>telc</b> The European Language Certificates	German, English, Russian, (more languages on request)	Certificate of foreign language skills A1-A2, B1, B2, B1/B2/C1 + Beruf	Levels German A1-B2, B1/ B2+Beruf and other languages: dates on request	From € 160
<b>telc</b> A1-C2 C1 Hochschule	German	Certificate of foreign language skills. Deutsch C1 Hochschule is equivalent to DSH and TestDaF.	<b>2021:</b> 09.10, 13.11, 11.12 <b>2022:</b> 08.01, 12.02, 12.03, 09.04, 07.05, 11.06, 09.07, 13.08, 10.09, 08.10, 12.11, 10.12	€ 160
<b>telc</b> B1/B2 Pflege B2/C1 Medizin	German	Certificate of specialist language competence required by qualification recognition authorities and medical institutes.	Dates on request	From € 160
<b>DTZ</b> Deutsch Test für Zuwanderer	German	This test certifies your language skills from A2-B1. It is accepted by authorities as a requirement for settled status.	Dates on request	€ 100
<b>TestAS</b> Test for Academic Studies	German or English	Aptitude test for international students entering higher education; not yet obligatory.	<b>2021:</b> 30.10 <b>2022:</b> 22.02, 23.04, 24.05, 22.10	€ 135
<b>onSET</b>	German or English	Internet test (A2-C1), Results available on demand, worldwide.	Dates on request	€ 22.50 (minimum of 3 participants)
<b>Test WiDaF®</b> Test Deutsch als Fremdsprache in der Wirtschaft	German	Standardised, business-focused test of German (A2-C2).	Dates on request	180
<b>TOEFL iBT®</b> Test of English as a Foreign Language	English	Evidence of language competence for admission to higher education, especially BA, MA, B.Sc, B.Eng, M.Sc, MBA programmes.	<b>2021:</b> 06.11, 13.11, 27.11, 04.12, 11.12 <b>2022:</b> 29.01, 12.02, 12.03, 23.04, 14.05, 21.05, 11.06, 25.06 (further dates unknown at the time of going to press)	US\$ 245
<b>TOEFL Junior®</b>	English	Assessment and certification of school pupils' English competence; admission requirement for some school exchange programmes.	Dates on request	€ 180
<b>TOEIC® – Test Of English for International Communication</b>	English	The world's most popular test of English for business purposes.	<b>Listening &amp; Reading and Speaking &amp; Writing:</b> Dates on request	Each part € 180
<b>IELTS – International English Language Testing System</b>	English	Certificate of English language skills required for higher education, migration and employment.	Dates on request	€ 226
<b>Foreign Language Correspondence Clerk</b>	German as a foreign language, English, Spanish, French, Japanese, Chinese, Russian and more	State recognition for Chinese, English, French, Japanese, Russian and Spanish. Recognition for German as a foreign language has been applied for.  Examinations are available for other languages, for example the examinations offered by the IHK. Further information on request.	Course start: 12.09.2022	€ 150 per language, € 150 for the secretarial examination
<b>European Secretary</b>	English, Spanish, French			
<b>Multilingual Correspondence Clerk</b>	English, Spanish, French + Japanese, Russian or Chinese			
<b>Translator</b>	English, Spanish, French and more			
<b>School's in-house examination</b>	German, English	a) F+U learners: € 75; b) external learners: € 115 (incl. registration fee).		

<sup>1</sup>Status August



## General information

- **Registration fee (first-time participation only):** €50 (for 2 people: €30 / person; for 3 people: €25 / person); from 4 people: €20 / person).
- **Family discount:** 10% off all course fees.
- **Free additional services:** Placement test, progress tests, use of the learner PCs (3 computer rooms with 50 PCs), Wi-Fi, certificate of participation, documentation for authorities, student ID, organisation of language tandems, orientation event.
- **Lesson material:**
  - **Online courses / online participation:** €50 per level for e-books
  - **In-class lessons / in-class participation:** €35-€60 per level for hard copies / printed books
- The **prices and services** quoted in the brochure are valid until the publication of a new brochure. Errors excepted.
- **Information specified in the German and English versions of the brochure is authoritative.** All other translations are solely for the purpose of orientation in the respective language.
- **Non-profit education provider:** The majority of F+U's services are exempt from Value Added Tax.
- **Course levels:** A1-C2 (unless otherwise stated in the course description)
- **Maximum number of participants:** In-class: 15; online and hybrid: 20
- **Minimum number of participants:** 6
- **Guaranteed provision:** If requested by learners, courses are held even without the minimum number of participants (six people). The number of hours booked is reduced by 25% for three to five learners and by 50% for one or two learners.
- **Regular lesson times:** Monday-Friday: 07:15-20:00; Saturday: 10:00-16:00 (see additional information on page 17).
- **School administration opening hours:** Monday-Friday: 07:30-19:00 (Saturday: 10:00-16:00).
- Our courses are taught by **experienced and highly qualified** teachers.
- **One teaching hour (TH) is 45 minutes.**
- **Minimum age:** Group courses: 16 years; junior courses: 6 years (German and English courses).
- **Public holidays: 2021:** 01.11; **2022:** 06.01, 15.04, 18.04, 26.05, 06.06, 16.06, 03.10, 01.11, 26.12. The missed lesson is taken at the end of the course; for planning reasons, a written request must be made no later than 14:30, one day in advance.
- **School holiday:** Intensive courses and individual lessons are offered throughout the year; however, learners can request an individual pause in learning. Evening course learners have a break from 20.12.2021 or from 19.12.2022 until 31.12.2021/2022 (see also 'Individual holiday').

- **Individual holiday:** Intensive courses and individual lessons are offered throughout the year. Learners can request an individual pause in learning (the booked course is extended by the confirmed holiday duration).
  - **Intensive courses:** Two weeks (Monday-Friday) holiday per quarter (12 course weeks); requests must be received no later than Thursday, 16:00, before the start of the holiday. The minimum holiday duration is one complete week (Monday-Friday). Please don't forget to extend your accommodation contract where necessary.
  - **Evening courses:** Requests must be received no later than 16:00 on the course day.
  - **Individual lessons, closed small groups, company training:** Cancellation of the scheduled lesson without charge is possible if notification is received by 14:00 the day before. Cancellation of Monday lessons must be made no later than 14:00 on the previous Saturday.
- **Applications to change the course level or module** must be received by the school administration office by Thursday, 16:00, for the subsequent week.
- **Cancellation of the course** is possible without charge until three weeks before the start of the course, after which the following cancellation charges apply: one week before the start of the course: €100; by Friday, 12:00, before the start of the course: €150; after this notice period but before the start of the course: the registration fee plus the course fee for two course weeks/months or, in the case of individual lessons, the course fee for two individual teaching hours.
- **After the start of the course, termination of the course or a reduction** in the number of lessons is possible only in cases prescribed by law (see our General Terms and Conditions).
- **Cancellation of accommodation** booked through F+U is possible with a notice period of six full weeks and payment of a cancellation fee of €100. (For further regulations see from page 43 and our General Terms and Conditions).
- **International test centre:** At F+U you have the opportunity to take internationally recognised tests including TOEFL®, IELTS, TestDaF, telc, ECL, TestAS, TOEIC®, OnSet and more.
- The language courses are designed to **prepare students for university studies or for professional purposes** and lead to the acquisition of an international language diploma.
- The school has **barrier-free** access and an **accessible WC** is also available.
- Accommodation for learners under the age of 18 is available in our **boarding school**; our **Youth Campus 24** is also available in July and August.

## Cultural programme

We organise regular afternoon activities for our learners. The cultural programme includes guided tours of Heidelberg, excursions, sports activities and group game evenings. Advance registration is possible during school office opening hours (see page 26).





Heidelberg Old Bridge, Brückentor (Bridge Gate)

**Registration fee (first-time participation only):** € 50 (for 2 people: € 30 / person; for 3 people: € 25 / person); from 4 people: € 20 / person).  
**Family discount:** 10% off the course fees.

We offer you tailor-made solutions for your individual needs and requirements – whether you want to acquire basic knowledge of a language, improve your skills in the specialist language typical of your industry or communicate confidently during your next holiday abroad. You can choose the form of your language training flexibly, whether in-class lessons at our school, in-house training in your company or live online training worldwide – border free and at any time.

### In-class lessons at our school on Bismarckplatz

With 50 multimedia-equipped classrooms and three Internet rooms with 50 PCs, free Internet access and Wi-Fi and over 100 highly qualified teachers, the F+U Academy of Languages meets all criteria to ensure effective, successful language lessons. Thanks to our central location at Bismarckplatz, Heidelberg's main public transport hub, we can be easily reached by all means of transport.

### Online lessons: live language courses – worldwide and at any time

In the virtual classroom our teachers support you in live, interactive lessons. You can arrange to start the course at any time, and we offer flexible course times to suit your needs.

With the support of the latest technology and our experienced teachers, you develop your skills in our standard and specialist language courses. Our comprehensive school tuition programme supports pupils' progress in all school subjects.

To participate in the online lesson, you require a stable broadband Internet connection and a computer, laptop or tablet, as well as a camera and headset. Participation with a mobile phone is possible, but due to the teaching methods we recommend that you use a mobile phone to join the course only as a last resort.

### In-house training in your company

Do your employees need language courses specific to the industry? Should they be able to communicate confidently on the international stage? We offer you individually designed language training in over 20 languages, such as German, English, Chinese, Japanese, Italian, Spanish and French. You have the choice! Individual tuition or small groups: in our language courses, your team receive efficient tuition, whether they are beginners or advanced learners. With an individually designed syllabus, we respond to the participants' needs and context of application.

### The benefits at a glance:

- No registration fee when booking a **trial lesson** (the fee is payable only from the second teaching hour).
- No charge for **lesson cancellation** if written notification is received no later than 14:00 the previous working day (languages@fuu.de).
- The pace and content of the lessons are tailored to your requirements; this guarantees a flexible course structure and interactive atmosphere.
- You can join a free **language tandem** with our German course learners from England, the USA, Japan, China, France, Italy, Russia, Brazil, Spain and several other countries.
- **Languages offered:** Arabic, Brazilian, Bulgarian, Chinese, Croatian, Czech, Dutch, English, French, Georgian, German, Greek, Hungarian, Italian, Japanese, Polish, Portuguese, Romanian, Russian, Serbian, Spanish, Swedish, Turkish, Ukrainian, (more languages on request).

**Regular lesson times:** Monday-Friday: 07:15-20:00; Saturday: 10:00-16:00

### Supplementary charges:

- **Outside regular lesson times (see above):** supplement of 25%.
- **Specialist language I:** Business I: basics; literature; examination preparation I (TestDaF, DSH, telc, ECL); translation training: supplement of 10%.
- **Specialist language II:** Medicine I: basics; care professions; technology; examination preparation II (IELTS, TOEFL, TOEIC): supplement of 20%.
- **Specialist language III:** Business II and medicine II: specialisations: supplement of 50%.
- **Specialist language IV:** Examination preparation III (GMAT, TestAS, translator IHK): € 50 per TH / person (groups on request).

### In-house training

- 30% supplement inside Heidelberg city area (minimum 2 TH per session)\*
  - 50% supplement outside Heidelberg city area (minimum 3 TH per session)\*
- \*plus € 0.30 per km from the school to the lesson location and back

German, English, Spanish, Italian	1 learner	2 learners	3-4 learners
1-49 TH	€ 30	€ 36	€ 41
From 50 TH	€ 25	€ 31	€ 36
Russian, Turkish, Polish	1 learner	2 learners	3-4 learners
1-49 TH	€ 32	€ 38	€ 43
From 50 TH	€ 27	€ 33	€ 38
Arabic, Chinese, French, Japanese, Korean	1 learner	2 learners	3-4 learners
1-49 TH	€ 35	€ 41	€ 46
From 50 TH	€ 30	€ 36	€ 41
All other languages	1 learner	2 learners	3-4 learners
1-49 TH	€ 39	€ 45	€ 50
From 50 TH	€ 34	€ 40	€ 45

The listed prices are per **teaching hour** (TH, 45 minutes)  
 Fees for groups of 5 or more people from page 25.







## Learn languages the way you like: in-class, online or in hybrid lessons.

Would you like to improve your language skills and get to know one of Germany's most beautiful cities? Then our in-class language courses are just right for you. Make your language course an all-round unique experience with us in Heidelberg.

Our hybrid courses offer you maximum flexibility with the usual quality. Decide whether you would rather attend your language course online or in person. This is made possible by our hybrid format: online and in-class participants interact in the hybrid courses both with the teacher and with each other thanks to state-of-the-art technology.

**Registration fee (first-time participation only):** €50 (for 2 people: €30 / person; for 3 people: €25 / person); from 4 people: €20 / person).

**Lesson material: Online participation:** €50 per level for e-books. **In-class participation:** €35-€60 per level for hard copies / printed books.

**Family discount:** 10% off the course fee.

**Individual lesson** (standard German) in addition to group lesson: €25 / 45 minutes.

**Course levels:** A1-C2 (unless otherwise stated in the course description).

**Maximum number of participants:** In-class: 15; online and hybrid: 20.

**Minimum number of participants:** 6.

**Guaranteed provision:** If requested by learners, courses are held even without the minimum number of participants (six people). The number of hours booked is reduced by 25% for three to five learners and by 50% for one or two learners.



## Our classic courses

**Course start: No. 1-6:** For all levels except beginners: every Monday throughout the year. **For beginners:** 2021: 04.10, 08.11, 06.12; 2022: 10.01, 07.02, 07.03, 04.04, 02.05, 07.06, 04.07, 18.07, 01.08, 15.08, 05.09, 04.10, 07.11, 05.12

**No. 7:** 2021: 06.09; 2022: 07.02, 09.05, 12.09

**No. 8a:** 2021: 11.10, 08.11; 2022: 10.01, 07.03, 20.06; 12.09, 31.10

**No. 8b:** 2022: 11.07

No.	Course	Lesson format	Description	TH / week	Course times Monday - Friday	Flexible course duration (course fee per week)			Semester courses	
						1-4 wks	5-11 wks	From 12 wks	20 wks	40 wks
1	Intensive course 20	Online	Standard German	20	09:00-12:15	€ 100	€ 90	€ 80	€ 1500	€ 2800
2	Intensive course 20	In-class	Standard German, optional exam preparation from C1 or Business German from B2	20	09:00-12:15	€ 160	€ 140	€ 120	€ 2300	€ 4400
3	Premium course 30	In-class	Standard German, optional exam preparation from C1	30	09:00-12:15 13:00-14:30	€ 195	€ 180	€ 155	€ 3000	€ 5600
4a	Intensive course 20 + Module course 10	In-class	Standard German, optional combination with exam preparation	20 + 10	09:00-12:15 13:00-14:30	€ 195	€ 180	€ 155	€ 3000	€ 5600
4b	Intensive course 20 + Module course 10	Online		20 + 10	09:00-12:15 13:00-14:30	€ 195	€ 180	€ 155	€ 3000	€ 5600
5	Super-intensive course 40	In-class	Standard German, optional exam preparation from C1 or Business German from B2 / Job application training	40	08:00-08:45 09:00-12:15 13:00-14:30 14:45-15:30	€ 260	€ 240	€ 225	-	-
6a	Module course 10	Hybrid	Consolidation course: Standard German	10	13:00-14:30	€ 95	€ 90	€ 75	-	-
6b	Module course 10	Hybrid	Consolidation course: Preparation for TestDaF and/or telc C1 Hochschule	10	13:00-14:30	€ 95	€ 90	€ 75	-	-
7	TestDaF 15	Online	Preparation for TestDaF	15	13:00-15:30	€ 95	€ 90	€ 75	-	-
8a	Intensive course 15	Online	Standard German, from level B1	15	13:00-15:30	€ 95	€ 90	€ 75	-	-
8b	Intensive course 30	Online	Summer course, from level B1	30	09:00-12:15 13:00-14:30	€ 150	€ 135	€ 115	-	-

**Hybrid lesson** Linking in-class and live online training (see also the description at the top of this page).

**Top offers for university applicants** If you are admitted to our VICTORIA university of applied sciences or our iba / isba universities of cooperative education, you will receive a refund of 25% of the language course fees on successful enrolment.

**Accommodation** You can find detailed information about our comprehensive range of accommodation from page 36.



## Special courses

**Course start: No. 9-13 and 18:** 2021: 04.10, 08.11, 06.12; 2022: 10.01, 07.02, 07.03, 04.04, 02.05, 07.06, 04.07, 18.07, 01.08, 15.08, 05.09, 04.10, 07.11, 05.12 (further dates on request).

**No. 14 and 16:** 01.08

**No. 15:** By arrangement.

**No. 17:** 24.01, 21.03, 25.04, 19.09 (four weeks before the respective examination).

No.	Course	Lesson format	Description	TH / week	Course times Monday - Friday	Flexible course duration (course fee per week)		
						1-4 wks	5-11 wks	From 12 wks
9	Business correspondence I	In-class	Business communication	5	08:00-08:45	€ 50	€ 45	€ 40
10	Education voucher I Part-time course <sup>1</sup>		Standard German in combination with Business specialist language	25	08:00-08:45 09:00-12:15	These courses are supported by the Bundesagentur für Arbeit (Federal Employment Agency).		
11	Education voucher II Full-time course <sup>1</sup>			40	08:00-08:45 09:00-12:15 13:00-14:30 14:45-15:30			
12	Educational leave 30 <sup>2</sup>		Standard German	30	09:00-12:15 13:00-14:30	€ 235	-	-
13	Educational leave 40 <sup>2</sup>			40	08:00-08:45 09:00-12:15 13:00-14:30 14:45-15:30	€ 295	-	-
14	Medical German <sup>3</sup> or German for care professions <sup>4</sup>	Hybrid	Open group, from B2	20	13:00-14:30	€ 250	-	-
15			Closed group max. 8 learners, from B1	Course time, duration and intensity by arrangement		€ 55 per TH		
16	Professional development seminar for German teachers	Hybrid	Methods and didactical instruction supplemented by lesson observation <sup>5</sup>	20 + 20	13:00-16:15 (+ observation 09:00-12:15)	€ 250	-	-
17	TestAS preparation		Block seminar	10	14:45-16:15	€ 395 (Duration: 4 weeks)		
18	Business correspondence II / Job application training	In-class	Consolidation course: Business communication	5	14:45-15:30	€ 50 €	€ 45	€ 40
38	Junior programme		Detailed information from page 28.					

<sup>1</sup>Courses are certified according to the Accreditation and Licensing Ordinance – Employment Promotion (Akkreditierungs- und Zulassungsverordnung – Arbeitsförderung – AZAV); duration 4 or 8 weeks.

<sup>2</sup>The courses are recognised according to the educational leave laws of the states of Baden-Württemberg, Hesse and Rhineland-Palatinate; duration 1 or 2 weeks.

<sup>3</sup>In order to obtain recognition of your licence to practise medicine in Germany, you must successfully pass the B2 general language exam and the C1 medical language exam. In addition to medical terminology, error-free communication with patients in German is particularly important. Duration: 4 weeks.

<sup>4</sup>German in nursing, vocational preparation and accompanying training or employment - for everyday nursing in a nursing home, hospital or outpatient care. Duration and intensity by arrangement.

<sup>5</sup>Teaching observation only with in-class lessons, duration: 4 weeks.







**Course start:** For all levels except beginners: Every Monday throughout the year.  
 For beginners: 2021: 04.10, 08.11, 06.12; 2022: 10.01, 07.03, 02.05, 07.06, 04.07, 05.09, 04.10, 05.12 (further dates on request).

No.	Course	Lesson format	Description	TH / week	Course days 18:30-20:00	Flexible course duration (course fee per week)		
						1-4 wks	5-11 wks	From 12 wks
19	Main course	Hybrid	Standard German	4	Mon + Thu	€ 30	€ 25	€ 20
20	Main course + Module course		Combination of Main course with the Module course Grammar, Conversation	6	Mon + Wed + Thu	€ 45	€ 35	€ 30
21	Module course		Consolidation lesson	2	Wed	€ 25	€ 22	€ 18

Individual lesson (standard German) in addition to group lesson: € 25/ 45 minutes.

## Learners' home countries: German courses 2019 (approx. 6,195 learners)

Countries	Share	Countries	Share	Countries	Share	Countries	Share
People's Republic of China	15.20%	Russian Federation	6.94%	Switzerland	1.33%	Cyprus	0.80%
Japan	9.94%	Israel	4.42%	Brazil	1.16%	France	0.70%
Turkey	9.16%	South Korea	4.39%	Iran	1.07%	*95 other countries	13.24%
Mexico	8.16%	USA	2.16%	Spain	1.00%	<b>Total</b>	<b>100.00%</b>
Tunisia	7.90%	India	1.36%	Ukraine	0.98%		
Italy	7.80%	Mauritius	1.34%	Syria	0.97%		

**\*95 other countries:** Afghanistan, Albania, Algeria, Angola, Argentina, Armenia, Australia, Azerbaijan, Bahrain, Bangladesh, Belarus, Belgium, Bolivia, Bosnia and Herzegovina, Bulgaria, Cambodia, Cameroon, Canada, Chile, Colombia, Croatia, Cuba, Czech Republic, Denmark, Dominican Republic, Ecuador, Egypt, Eritrea, Ethiopia, Georgia, Germany, Greece, Guatemala, Guinea, Hungary, Indonesia, Iraq, Ireland, Ivory Coast, Jamaica, Jordan, Kazakhstan, Kenya, Kyrgyzstan, Kosovo, Kuwait, Latvia, Lebanon, Libya, Lithuania, Luxembourg, Malaysia, Macedonia, Moldova, Mongolia, Montenegro, Morocco, Mozambique, Myanmar, Netherlands, New Zealand, Nicaragua, Nigeria, Norway, Pakistan, Palestine, Paraguay, Peru, Philippines, Poland, Portugal, Qatar, Romania, Saudi Arabia, Serbia, Slovakia, Somalia, Sri Lanka, South Africa, Sudan, Sweden, Tanzania, Thailand, Togo, Trinidad and Tobago, Turkmenistan, Uruguay, Uzbekistan, United Arab Emirates, United Kingdom, Venezuela, Vietnam, Yemen.

**Registration fee (first-time participation only):** €50 (for 2 people: €30 / person; for 3 people: €25 / person); from 4 people: €20 / person).  
**Lesson material:** Online participation: €50 per level for e-books. In-class participation: €35-€60 per level for hard copies / printed books.

**Family discount:** 10% off the course fee.

**Individual lesson** (standard German / English) in addition to group lesson: €25 / 45 minutes.

**Course levels:** A1-C2 (unless otherwise stated in the course description).

**Maximum number of participants:** In-class: 15; online and hybrid: 20.

**Minimum number of participants:** 6.

**Guaranteed provision:** If requested by learners, courses are held even without the minimum number of participants (six people). The number of hours booked is reduced by 25% for three to five learners and by 50% for one or two learners.

**Course start:** For all course levels, except beginners: every Monday throughout the year.

For beginners: 2021: 04.10, 06.12; 2022: 10.01, 07.03, 02.05., 07.06, 04.07, 05.09, 04.10, 05.12 (further dates on request).

No.	Course	Lesson format	TH / week	Course days	Course times	Flexible course duration (course fee per week)		
						1-4 wks	5-11 wks	From 12 wks
22	Intensive course 20 (German) plus Module 10 (English)	In-class	20 + 10	Monday to Friday	09:00-12:15 13:00-14:30	€ 195	€ 180	€ 155
23	Intensive course 20 (English) plus Module course 10 (German)	In-class and Hybrid	20 + 10		09:00-12:15 13:00-14:30	€ 195	€ 180	€ 155







**Registration fee (first-time participation only):** €50 (for 2 people: €30 / person; for 3 people: €25 / person); from 4 people: €20 / person).  
**Lesson material: Online participation:** €50 per level for e-books. **In-class participation:** €35-€60 per level for hard copies / printed books.

**Family discount:** 10% off the course fee.

**Individual lesson** (standard English) in addition to group lesson: €25 / 45 minutes.

**Course levels:** A1-C2 (unless otherwise stated in the course description).

**Maximum number of participants:** In-class: 15; online and hybrid: 20.

**Minimum number of participants:** 6.

**Guaranteed provision:** If requested by learners, courses are held even without the minimum number of participants (six people). The number of hours booked is reduced by 25% for three to five learners and by 50% for one or two learners.



## Our classic courses

**Course start:** For all course levels, except beginners: every Monday throughout the year.

**For beginners:** 2021: 04.10, 06.12; 2022: 10.01, 07.03, 02.05, 07.06, 04.07, 01.08, 05.09, 04.10, 05.12 (further dates on request).

No.	Course	Lesson format	Description	TH / wk	Course times Monday - Friday	Course fee/week			Semester courses	
						1-4 wks	5-11 wks	From 12 wks	20 wks	40 wks
24	Intensive course 20	Online	Standard English	20	09:00-12:15	€ 100	€ 90	€ 80	€ 1500	€ 2800
25	Intensive course 20	In-class	Standard English, optional Business English from level B2 / Job application training	20	09:00-12:15	€ 160	€ 140	€ 120	€ 2300	€ 4400
26	Intensive course 20 + Module course 10			20 + 10	09:00-12:15 13:00-14:30	€ 195	€ 180	€ 155	€ 3000	€ 5600
27	Super-intensive course 40			40	08:00-08:45 09:00-12:15 13:00-14:30 14:45-15:30	€ 260	€ 240	€ 225	-	-
28	Module course 10		Consolidation course	10	13:00-14:30	€ 95	€ 90	€ 75	-	-

## Special courses

**Course start:** 2021: 04.10, 06.12; 2022: 10.01, 07.02, 07.03, 04.04, 02.05, 07.06, 04.07, 01.08, 05.09, 04.10, 05.12 (further dates on request).

No.	Course	Lesson format	Description	TH / wk	Course times Monday - Friday	Course fee/week		
						1-4 wks	5-11 wks	From 12 wks
29	Business correspondence I	In-class	Business communication	5	08:00-08:45	€ 50	€ 45	€ 40
30a	Education voucher I Part-time course <sup>1</sup>		Standard English in combination with Business specialist language	25	08:00-08:45 09:00-12:15	These courses are supported by the Bundesagentur für Arbeit (Federal Employment Agency)		
30b	Education voucher II Full-time course <sup>1</sup>			40	08:00-08:45 09:00-12:15 13:00-14:30 14:45-15:30			
31	Educational leave 30 <sup>2</sup>		Standard English	30	09:00-12:15 13:00-14:30	€ 235	-	-
32	Educational leave 40 <sup>2</sup>			40	08:00-08:45 09:00-12:15 13:00-14:30 14:45-15:30	€ 295	-	-
33	Business correspondence II / Job application training		Consolidation course: Business communication	5	14:45-15:30	€ 50	€ 45	€ 40
39	Junior programme	Detailed information from page 28ff.						

<sup>1</sup>Courses are certified according to the Accreditation and Licensing Ordinance – Employment Promotion (Akkreditierungs- und Zulassungsverordnung - Arbeitsförderung – AZAV); duration 4 or 8 weeks.

<sup>2</sup>The courses are recognised according to the educational leave laws of the states of Baden-Württemberg, Hesse and Rhineland-Palatinate; duration 1 or 2 weeks.

- Hybrid lesson** Linking in-class and live online training (see also the description on page 18).
- Top offers for university applicants** If you are admitted to our VICTORIA university of applied sciences or our iba / isba universities of cooperative education, you will receive a refund of **25% of the language course fees on successful enrolment.**
- Accommodation** You can find detailed information about our comprehensive range of accommodation from page 36.

**Course start:** For learners with existing knowledge of the language: 2021: 04.10, 06.12; 2022: 10.01, 07.02, 07.03, 04.04, 02.05, 07.06, 04.07, 01.08, 05.09, 04.10, 05.12 (further dates on request); for beginners: on request.

No.	Course	Lesson format	Description	TH / week	Course days 18:30-20:00	Course fee per week		
						1-4 wks	5-11 wks	From 12 wks
34	Main course	Hybrid	Standard English, levels A2 to C1	4	Mon + Thu	€ 30	€ 25	€ 20
35	Intensive course		The main course is supplemented with individual lessons <sup>1</sup>	4 + IL <sup>1</sup>	Mon + Thu + IL <sup>1</sup>	Fee for the main course + IL <sup>1</sup>		

<sup>1</sup>Dates for the individual lesson are arranged with the teacher. **Individual lesson** (standard English) in addition to group lesson: €25 / 45 minutes.

## Learners' home countries: English courses 2019 (ca. 825 learners)

Countries	Share	Countries	Share	Countries	Share	Countries	Share
Germany	35.25%	Turkey	3.20%	Brazil	0.89%	Republic of Kosovo	0.53%
Japan	15.75%	Italy	3.10%	Azerbaijan	0.89%	Poland	0.53%
Russian Federation	9.35%	Saudi Arabia	2.13%	Colombia	0.80%	*15 other countries	6.47%
People's Republic of China	6.05%	Portugal	1.77%	Chile	0.80%	<b>Total</b>	<b>100.00%</b>
Georgia	5.16%	Israel	1.68%	Croatia	0.71%		
Ukraine	3.28%	France	1.06%	Kazakhstan	0.62%		

\*15 other countries: Algeria, Armenia, Dominican Republic, Hungary, Iran, Kuwait, Montenegro, Paraguay, Peru, Serbia, South Korea, Spain, Switzerland, Syria, Taiwan.







**Registration fee (first-time participation only):** €50 (for 2 people: €30 / person; for 3 people: €25 / person); from 4 people: €20 / person).  
**Lesson material: Online participation:** € 50 per level for e-books. **In-class participation:** €35-€60 per level for hard copies / printed books.  
**Family discount:** 10% off the course fee.  
**Individual lesson** (standard German) in addition to group lesson: €25 / 45 minutes.  
**Maximum number of participants:** In-class: 15; online and hybrid: 20.  
**Minimum number of participants:** 6.  
**Guaranteed provision:** If requested by learners, courses are held even without the minimum number of participants (six people). The number of hours booked is reduced by 25% for three to five learners and by 50% for one or two learners.  
**Course start German:** For all course levels, except beginners: Every Monday throughout the year.  
 For beginners: 2021: 04.10, 08.11, 06.12; 2022: 10.01, 07.02, 07.03, 04.04, 02.05, 07.06, 04.07, 18.07, 01.08, 15.08, 05.09, 04.10, 07.11, 05.12  
**Course start English:** For all course levels, except beginners: Every Monday throughout the year.  
 For beginners: 2021: 04.10, 06.12; 2022: 10.01, 07.03, 02.05, 07.06, 04.07, 01.08, 05.09, 04.10, 05.12. (further dates on request).  
**Course start French, Italian and Spanish** (levels A2+B1): 01.08 (further levels and dates on request).

No.	Course	Lesson format	Federal state recognition	TH / wk	Course days	Course times	Course fee per week
12	German as a foreign language	In-class The possibility of online participation is under review	Baden-Württemberg, Hesse, Rhineland-Palatinate  Status August 2021	30	Monday to Friday	09:00-12:15 13:00-14:30	€ 235
13	German as a foreign language			40		08:00-08:45 09:00-12:15 13:00-14:30 14:45-15:30	€ 295
31	English			30		09:00-12:15 13:00-14:30	€ 235
32	English			40		08:00-08:45 09:00-12:15 13:00-14:30 14:45-15:30	€ 295
36	French, Spanish, Italian			30		09:00-12:15 13:00-14:30	€ 430
37	French, Spanish, Italian			40		09:00-12:15 13:00-14:30 15:00-16:30	€ 570



## German and English courses

Throughout the year we offer packages for class trips and groups of five or more people. The packages are designed for learners who want to improve their foreign language skills together while experiencing German culture in one of the country's most beautiful cities. Lessons can be held in international groups or in closed groups (minimum 5 people). Our diverse cultural programme offers plenty of variety, and can be tailored in advance to meet the special interests of the group participants. To round off the perfect language trip, you can book accommodation, with or without meals, in our halls of residence or with host families and a range of transfer options.

**Free offers for group leaders per 10 participants)**

**Language course:** German (English on request).

**Accommodation:** A room in one of our halls of residence (host family and hotel accommodation is only available at list price).

### General information

**Administration fee per group:** €150.

**Includes:** Placement tests, progress tests, certificate of participation, use of the school library, reading room and computer workstations, Wi-Fi.

**Course material (copies):** €15 per learner. Learners who prefer to work with books can buy the course material separately from the school: two course books cost between €35 and €60, depending on the level and language. Placement in existing international groups is possible.

Language(s)	TH / wk	Course times (Mon - Fri)	Fee per week and per person		
			5-9 learners	10-19 learners	From 20 learners
German	20	09:00-12:15	€ 130	€ 120	€ 110
German	30	09:00-12:15 13:00-14:30	€ 170	€ 155	€ 140
English	20	09:00-12:15	€ 130	€ 120	€ 110
English	30	09:00-12:15 13:00-14:30	€ 170	€ 155	€ 140
German Main course and English Module course	20 + 10	09:00-12:15 (G) 13:00-14:30 (E)	€ 190	€ 170	€ 150
English Main course and German Module course	20 + 10	09:00-12:15 (E) 13:00-14:30 (G)	€ 190	€ 170	€ 150

## Accommodation and meals

Accommodation type (double room occupation) <sup>1</sup>	Shower/WC	Kitchen	Meals	Fee per week and per person
Residence category A or B <sup>2,3</sup>	On corridor		Room only (see below <sup>3</sup> )	€ 120
Residence category E <sup>2,3</sup>	In room			€ 195
Host family	Shared with the family		Half board	€ 260
Hotel (single room supplement: 60%)	In room	No	See note <sup>3</sup>	€ 650
Youth hostel dormitory (from 4 people)	In room	No	Half board	€ 395

<sup>1</sup>Single rooms can be booked for a supplement. We will be happy to provide a quotation.

<sup>2</sup>See page 39 for our hall of residence categories.

<sup>3</sup>Meals in restaurants close to the school: half board: €150; full board: €260 (per week and per person; includes a soft drink or cup of tea or coffee with each meal).

In July and August lunch is also available in the school canteen: €90 / week (other dates on request).

Groups are responsible for arranging their own meals during excursions.







## Transfer to / from accommodation

The price of a weekly bus and tram ticket for the Heidelberg city area is €30; for Heidelberg and the surrounding area €50. Further offers for groups of 41 or more people and for transfers from other airports are available on request.

Route (Transfer to/from accommodation)		Fee per person
Heidelberg central train station	One way	Please ask us for the current transfer fees. During the pandemic these can only be determined on a daily basis.
	Both ways	
Mannheim central train station	One way	
	Both ways	
Frankfurt am Main airport	One way	
	Both ways	
Frankfurt Hahn/Karlsruhe/ Stuttgart airport	One way	
	Both ways	



## Cultural programme

Activity	Duration	Participants	Fee per person/ activity
Orientation tour of Heidelberg's Old Town	Approx. 2 hours	From 5	€ 10
Walks (Heiligenberg, Philosophers' Walk, Heidelberg Castle gardens and more)	Approx. 3 hours		
Sports activities (by the Neckar or in the school's own sports hall)	Approx. 3 hours		
Regular F+U 'Stammtisch' get-together	Approx. 2 hours		
Japanese seminar followed by social event (food and drinks not included)	Approx. 2 hours		€ 15
Barbecue party on the Neckar (food and drinks included)	Approx. 2 hours		€ 20
Museum visits (German Apothecary Museum, Palatinate Museum and others in Heidelberg)	Approx. 2 hours		€ 20
Boat trip on the Neckar: Heidelberg area	Approx. 1 hour		€ 25
Welcome party (food and drinks included)	Approx. 2 hours		€ 25
Museum visits (Technoseum, Kunsthalle Mannheim gallery, planetarium and more in Mannheim)	Approx. 4 hours		€ 30
Excursions (half day) <sup>1</sup>	Approx. 5 hours	From 10	€ 70
Excursions (full day) A <sup>2</sup>	Approx. 8 hours		€ 90
Excursions (full day) B <sup>3</sup>	Approx. 8 hours		€ 125

<sup>1</sup>German Wine Route in nearby Palatinate, Speyer (cathedral), Mannheim (Luisenpark), Bad Wimpfen (medieval town centre), Schwetzingen palace, boat trip to Neckarsteinach (town with four forts), Ladenburg (incl. admission).

<sup>2</sup>Frankfurt am Main, Rudesheim am Rhein, Stuttgart (Mercedes Benz or Porsche Museum; incl. admission), Black Forest (e.g. Triberg waterfalls, Cuckoo-Clock-Museum).

<sup>3</sup>Strasbourg, Europa-Park Rust (incl. admission), Rothenburg ob der Tauber, Nuremberg, Baden-Baden (incl. admission to Caracalla Spa), Lake Constance.



Untere Straße with Church of the Holy Spirit





## Summer courses German and English (6-17 years)

Summer holiday language courses for children and young people (6-17 years) in one of Germany's most beautiful cities!

### Overview

- German or English courses for small groups of children and young people from all over the world (max. 15 learners).
  - Accommodation with carefully selected host families or at the Youth Campus 24; young people over the age of 16 can also stay in our halls of residence (see from page 39).
  - 24-hour supervision possible (see Youth Campus 24).
  - Meals, varied leisure programme, transfer.
- All modules can be booked individually or as a package.



### Language courses

Registration fee (first-time participation only): €50 (for 2 people: €30 / person; for 3 people: €25 / person); from 4 people: €20 / person).

Parent-child programme: 10% off the course fees.

Children take part in the junior programme and parents participate in an intensive course of at least 10 teaching hours per week. Accommodation in halls of residence, apartments or with host families.

Discounts on course fees and additional modules are available for joint registrations: two junior learners: 5%; three junior learners: 10%; four or more junior learners: 15%.

No.	Language	Age group	Course levels <sup>1</sup>	TH/wk	Learners	Course times (Mon - Fri)	Fee per week (incl. course material)		Start <sup>1</sup>	End
							1-2 wks	From 3 wks		
38	German	6-7, 8-9, 10-13, 14-17 years <sup>2</sup>	A1; A2; B1, B2	20	6-15	09:00-12:15	€ 210	€ 180	Every Monday from 04.07-08.08 <sup>3</sup>	12.08
39	English		A2; B1; B2	20	6-15	09:00-12:15	€ 210	-	01.08 or 08.08 <sup>3</sup>	

<sup>1</sup>Language level C1 on request. Additional individual lesson (standard): €25 / 45 minutes.

<sup>2</sup>Young people aged 16 or over can also participate in the courses for adults.

<sup>3</sup>Start for complete beginners: 04.07 and 01.08 (German); English on request.

### Modules

No.	Accommodation, lunch, leisure activities	Week days	Time	Fee per week	
				1-2 wks	From 3 wks
40	Host family accommodation (half board: Mon - Fri; full board: Sat + Sun) <sup>1</sup>	Sunday - Saturday	-	€ 310	€ 295
41	Lunch in the school	Monday - Friday	12:30-13:30	€ 95	€ 90
42	Leisure activities	Monday - Saturday	13:30-17:00 <sup>2</sup>	€ 120	€ 110

<sup>1</sup>Modules 41 and 42 are obligatory for host family accommodation bookings, as host family supervision of children and young learners is usually available from 17:30 on working days. Supplement for an English-speaking host family: € 100 per week.

<sup>2</sup>Saturdays from 12:30 to 16:00.

### Packages and additional modules

No.	Fee per week	1-2 wks	From 3 wks
43	Language course + accommodation + lunch + activities <sup>1</sup>	€ 695	€ 645
44	Language course + lunch + activities <sup>1</sup>	€ 405	€ 365
45	Language course + activities <sup>1</sup>	€ 315	€ 280
No.	Additional module: accompaniment	1-2 wks	From 3 wks
46	Accompaniment to school and back to host family accommodation (Monday - Saturday)	€ 240	€ 225
No.	Additional module: transfer	Please ask us for the current transfer fees. During the pandemic these can only be determined on a daily basis.	
47	Group transfer from Frankfurt am Main airport <sup>2,3</sup>		
48	Individual collection from Frankfurt am Main, Karlsruhe / Baden-Baden or Stuttgart airports <sup>3</sup>		

<sup>1</sup>Service includes: supervision, admission tickets and transport costs associated with the activity.

<sup>2</sup>Collection from Meeting Point.

<sup>3</sup>We will be pleased to provide a quote for a transfer from a different airport or from a railway station.

Round-the-clock supervision at our Youth Campus 24 for young people aged 14+, available in July and August.

Registration fee (first-time participation only): €50 (for 2 people: €30 / person; for 3 people: €25 / person); from 4 people: €20 / person).

Parent-child programme: 10% off the course fees.

Children take part in the junior programme and parents participate in an intensive course of at least 10 teaching hours per week. Accommodation in halls of residence, apartments or with host families.

Discounts on course fees and additional modules are available for joint registrations: two junior learners: 5%; three junior learners: 10%; four or more junior learners: 15%.

No.	Youth Campus 24	Days	Fee per week		Start <sup>1</sup>	End
			1-2 wks	From 3 wks		
49	Language course (German or English – 20 TH/week), round-the-clock supervision, accommodation in twin room, full board, accompaniment to and from school, daily supervised leisure activities, use of fitness room.	Sunday (arrival) to Saturday (departure)	€ 995	€ 945	Every Monday from 04.07 to 08.08 (German) and on 01.08 and 08.08 (English) <sup>1</sup>	12.08
			Extra day: € 145			

<sup>1</sup>Start for complete beginners: 04.07 and 01.08 (German); English on request.

### General information – summer courses

#### Course structure

- Learners in the German courses are grouped by age: 6-7, 8-9, 10-13 and 14-17 years. Complete beginners can start on 4 July or on 1 August; learners with previous knowledge of the language can join every Monday during the programme. Courses are offered at levels A1 to B2 (C1 on request). Learners aged 16 or older can join a course for adults (16+), also at C1 or C2 level. A special pre-course placement test can be taken in the school. The junior programme finishes on 12 August.
- Learners in the English courses are also grouped by age: 6-7, 8-9, 10-13 and 14-17 years. Courses are offered at levels A2 to B2 (C1 on request). Learners aged 16 or older can also join a course for adults (16+), also at C1 level. Learners can join the programme on Monday, 1 August or Monday, 8 August; the programme finishes on 12 August.
- The placement test is taken on the first day of the course.
- The lesson structure and content are appropriate for the respective age group. Learners in all courses are taught by experienced, qualified language teachers in modern, bright classrooms.
- The maximum group size is 15 learners.



#### Leisure activities

Our leisure activities programme is a vibrant mix of sporting and cultural activities. Examples include: Neckar boat trip; discovery tour of Heidelberg; trips to Heidelberg zoo, the botanical gardens, the Fairytale Paradise on Königstuhl, Heidelberg castle, the Museum of the Palatinate Heidelberg; sports activities, a picnic by the Neckar, games and sports in the F+U Campus sports hall; mini golf; group games evenings and cookery; swimming in Heidelberg's open air pool; hiking on the Heiligenberg; visit to the Tinnunculus falconry; visit to Thingstätte and much more. We also organise university tours for young learners.

Included: Supervision, admission tickets and transport related to the activity.

Not included: Meals during trips.

#### Lunch

Lunch for course participants is provided by a professional caterer, specialising in catering for nurseries and schools. The cook strictly complies with current standards regarding hygiene, sustainability and verified origin of ingredients. Please notify us when registering of any food allergy/intolerance or special dietary requirements (e.g. vegetarian or halal diet). Full board is guaranteed in the Youth Campus 24 programme.

#### Accommodation

- Children and young people from the age of 12 can stay with one of our carefully selected host families, subject to availability. In the interests of welfare and responsibility, host family accommodation must also be booked with lunch in the school and the leisure programme. Host family accommodation includes half board, with full board at weekends. Accommodation is also offered at our Youth Campus 24 for young learners aged 14 or over.
- We offer a range of accommodation in halls of residents and apartments for parents or other adults accompanying children and/or young learners participating in our junior programmes. The accommodation is available even if booked without a language course.

#### Youth Campus 24

Young people aged 14 or above share twin rooms at the campus with round-the-clock supervision. Our experienced staff are available for learners 24 hours a day. We are therefore able to guarantee a high degree of security for the young learners. The following services are included: Language course (German in July and August or English in August, each for 20 teaching hours per week); accommodation at the Youth Campus 24 (group breakfast and evening meal, lunch in the school), accompaniment to and from the school, supervised leisure activities seven days a week, group activities in the evenings, use of the modern fitness room and more.

#### Transfer from the airport, public transport

- Public transport (with the exception of transport associated with the leisure programme) and airport transfer costs are not included in the price. The price of a weekly ticket (bus and tram) for Heidelberg city area is €30; for Heidelberg and the surrounding area €50. A monthly ticket costs €80 (Status August 2021).
- Due to the pandemic, prices for group or individual transfers from Frankfurt am Main airport can only be determined on a daily basis.





## German courses in winter for young learners (12-17 years)

Language courses in winter for children and young people (12-17 years) in one of Germany's most beautiful cities!

### Overview

- German or English courses for small groups of children and young people from all over the world (max. 15 learners).
- Accommodation with carefully selected host families or in halls of residence (only for groups with accompaniment).
- Meals
- Varied leisure programme
- Transfer

All modules can be booked individually or as a package.



## Language courses

Registration fee (first-time participation only): €50 (for 2 people: €30 / person; for 3 people: €25 / person); from 4 people: €20 / person).

Parent-child programme: 10% off the course fees.

Children take part in the junior programme and parents participate in an intensive course of at least 10 teaching hours per week. Accommodation in halls of residence, apartments or with host families.

Discounts on course fees and additional modules are available for joint registrations: two junior learners: 5%; three junior learners: 10%; four or more junior learners: 15%.

No.	Language	Age groups	Course levels <sup>1</sup>	TH	Learners	Course times (Mon - Fri)	Fee per week (incl. course material)	Start	Duration <sup>3</sup>
50	German	12 + 13, 14-17 years <sup>2</sup>	A2, B1, B2	20	6-15	09:00-12:15	€ 210	12.12.2022	1 week

<sup>1</sup>Levels A1 and C1 on request.

<sup>2</sup>Young people aged 16 or above can also participate in adult courses.

<sup>3</sup>The course may be extended on request.

## Modules

No.	Accommodation, lunch, leisure activities	Week days	Time	Fee per week
51	Host family accommodation (half board: Mon - Fri; full board: Sat + Sun) <sup>1</sup>	Sunday - Saturday	-	€ 310
52	Lunch in the school	Monday - Friday	12:30-13:30	€ 95
53	Leisure activities <sup>2</sup>	Monday - Saturday	13:30-17:00 <sup>2</sup>	€ 120

<sup>1</sup>Modules 52 and 53 are obligatory for host family accommodation bookings, as host family supervision of children and young learners is usually available from 17:30 on working days. Supplement for an English-speaking host family: €100 per week.

<sup>2</sup>Our leisure activities programme is a vibrant mix of sporting and cultural activities. Examples include: Neckar boat trip; discovery tour of Heidelberg; trips to Heidelberg castle, Heidelberg Christmas market, ice-skating, climbing, skiing/snowboarding, visit to the trampoline park, cinema, group baking and crafts. We also organise university tours for young learners.

Included: Supervision, admission tickets and transport related to the activity. Not included: Meals during trips.

<sup>3</sup>Saturdays from 12:30 to 16:00.

## Packages and additional modules

No.	Package prices / Fee per week	Fee
54	Language course + accommodation + lunch + activities <sup>1</sup>	€ 695
55	Language course + lunch + activities <sup>1</sup>	€ 405
56	Language course + activities <sup>1</sup>	€ 315
No.	Additional module: accompaniment	Fee
57	Accompaniment to school and back to host family accommodation (Monday - Saturday)	€ 270
No.	Additional module: transfer	Fee
58	Group transfer from Frankfurt am Main airport <sup>2,3</sup>	Please ask us for the current transfer fees. During the pandemic these can only be determined on a daily basis.
59	Individual collection from Frankfurt am Main, Karlsruhe / Baden-Baden or Stuttgart airports <sup>3</sup>	

<sup>1</sup>Service includes: supervision, admission tickets and transport costs associated with the activity.

<sup>2</sup>Collection from Meeting Point.

<sup>3</sup>We will be pleased to provide a quote for a transfer from a different airport or from a railway station.



## English holiday courses (6-15 years)

Registration fee (first-time participation only): €50 (for 2 people: €30 / person; for 3 people: €25 / person); from 4 people: €20 / person).

Parent-child programme: 10% off the course fees.

Children take part in the junior programme and parents participate in an intensive course of at least 10 teaching hours per week. Accommodation in halls of residence, apartments or with host families.

Discounts on course fees and additional modules are available for joint registrations: two junior learners: 5%; three junior learners: 10%; four or more junior learners: 15%.

No.	Language	Age group	Course levels <sup>1</sup>	TH/wk	Learners	Course times (Mon - Fri)	Fee per week (incl. course material)	Start	Duration <sup>3</sup>
60	English	6-8, 9-12, 13-15 years <sup>2</sup>	A2, B1, B2	20	6-15	09:00-12:15 <sup>3</sup>	€ 210	19.04 <sup>3</sup> , 13.06 <sup>3</sup> , 01.08, 08.08, 02.11.2022	1 week

<sup>1</sup>Levels A1 and C1 on request.

<sup>2</sup>Young people aged 16 or above can also participate in adult courses.

<sup>3</sup>Due to the Easter and Whitsun public holidays the courses are held across four days (09:00-13:15).



## German and English courses all year (3-10 years)

Age-appropriate language courses (German or English)

Our children's academy courses are taught by qualified native speaker teachers.

Lessons for pre-school children also include movement games. The alternation between playful and structured learning helps prepare children for primary school.

Course structure: Grammar lessons, conversation training, introduction to the Latin alphabet, creative development, preparation for primary school

Course start: It is possible to start every Friday (no lessons on public holidays or in August)

Minimum number of learners: 6 children.

Sibling discount: 2 children: 5%; from 3 children: 10%.

No.	Language	Age groups	TH/wk	Learners	Course times	Fee per month <sup>1</sup>	Start
61	German or English	3-4, 4-5, 6-7, 8-10 years	2	6-15	17:00-18:30 (Fridays)	€ 75	Start possible every Friday

<sup>1</sup>With prepayment of 6 months: €395.





## Russian academy for children (1-14 years)

In addition to supporting general development, our Russian academy also teaches children and young people about the Russian language and culture. The focus of the lesson is age-appropriate teaching and consolidation of Russian language skills, musical education and the development of logical-mathematical thinking and creativity. The use of playful and methodical teaching elements helps pre-school children prepare for primary school.

**Course start:** Every Saturday (no lessons on public holidays or in August).

**Minimum number of learners:** 4 children.

**Sibling discount:** 2 children: 5%; from 3 children: 10%.

No.	Course	Course type	Age groups	Course times	Fees per month <sup>1</sup>
62	Russian (mother+child course)	In-class	1-2 years	By arrangement	€ 50
63	Russian (mother+child course)		2-3 years	09:00-10:30	€ 50
64	Russian + music		3-4 years	10:15-12:45 / 12:30-15:00	€ 60
65	Russian + music		4-5 years	09:30-12:30 / 12:30-15:30	€ 60
66	Russian + music		5-6 years	10:00-13:00 / 13:00-16:00	€ 60
67	Russian + logic + music		6-7 years	10:00-13:00 / 12:00-15:00	€ 65
68	Russian		7-8 years	10:00-11:30	€ 35
69	Russian		8-12 years	10:00-11:30	€ 35
70	Russian		12+ years	13:00-14:30	€ 35
71	English		From 6 years	13:45-14:45	€ 35
72	English		13+ years	15:00-16:00	€ 35
73	Art		From 6 years	11:45-13:15 / 13:30-15:00	€ 40
74	History		From 7 years	11:45-12:45	€ 35
75	Logic		From 6 years	By arrangement	€ 40
76	Fitness		4-6 years	11:15-12:00 / 12:30-13:15	€ 35
77	Fitness		5-7 years	13:15-14:00	€ 35
78	Fitness		For parents	10:00-11:00	€ 40

<sup>1</sup>Plus the cost of course materials.

No.	Course	Course type	Age groups	Course times	Teaching hours	1 TH <sup>1</sup>	10 TH <sup>1</sup>
79	Russian (3-5 children)	Online	From 6 years	By arrangement	1 TH = 80 minutes	€ 22	€ 215
80	Russian (individual lesson)		From 6 years	By arrangement	1 TH = 80 minutes	€ 26	€ 255
81	Music (individual lesson)	In-class	From 3 years	By arrangement	120 minutes monthly	€ 75 / month	

<sup>1</sup>Plus the cost of course materials.







The fun of learning – the joy of success. Throughout their school careers, young people can encounter many situations that necessitate more in-depth learning support. For this reason the F+U Academy of Languages has developed a modern tutoring programme.

### The benefits at a glance:

- **Siblings discount:** 10% off the course fees.
- Qualified teachers are the most important component of successful tutoring: the **Academy of Languages** can draw on a large pool of **highly qualified** teachers, as the language school is embedded in the structures of the F+U Group. The F+U Group is one of the largest education companies in the German-speaking world. With bilingual general education schools (primary school, secondary school, etc.), the language school and international universities, we are the experts when it comes to your child's education.
- **Fair tuition fees.**
- The Academy of Languages has over 30 years' experience in language teaching. It is **one of the largest language schools in Europe** as well as a major language examination centre.
- **Customer-friendly opening hours:** Monday - Friday: 07:30-20:00, Saturday: 10:00-16:00.
- **Central location** on Heidelberg's public transport hub Bismarckplatz, Hauptstrasse 1.

## Group lessons

Our groups are small and well coordinated. To participate in the lesson, you require a stable broadband Internet connection and a computer, laptop or tablet as well as a camera and headset. Participation with a mobile phone is possible, but due to the teaching methods we recommend that you use a mobile phone to join the course only as a last resort.

No.	Course	Learners <sup>1</sup> (in-class + online)	TH / week	Course days	Course times	Class levels <sup>2</sup>	Course start	Course fee per TH (45 mins)		
								1-4	5-19	From 20
82	German as a foreign language	6-10	4	Mon, Wed	16:00-17:30	From primary school entry <sup>2</sup> to Abitur	Calendar weeks: 2021: 38, 45 2022: 05, 12, 18, 23, 40, 47	€ 30	€ 26	€ 22
83	English	6-10	4	Tue, Thu				€ 30	€ 26	€ 22
84	French	6-8	4	Mon, Wed				€ 36	€ 31	€ 26
85	Spanish	6-8	4	Mon, Wed				€ 36	€ 31	€ 26
86	Mathematics	6-8	4	Mon, Wed				€ 48	€ 41	€ 35

<sup>1</sup>On request, we can also provide lessons if the minimum number of participants is not reached. The number of lessons per week is then reduced as follows: 4-5 learners: 3 teaching hours per week; 2-3 learners: 2 teaching hours per week.

<sup>2</sup>See also our programme for pre-school children and our Russian academy for children from page 31.

## Individual lessons

Does your child find it difficult to concentrate in a class? Or is there a difficult class test or final examination approaching? If so, our individual training is the right choice. The children and young people work individually on their weaknesses and develop strategies to tackle complex problems in a solution-orientated way. Our one-to-one training is of course available online and in class.

No.	Course	Lesson format	TH / week	Course fee per TH (45 mins)		
				1-2	3-29	From 30
87	German as a foreign language	In-class or online on request	By arrangement	€ 32	€ 30	€ 25
88	English			€ 32	€ 30	€ 25
89	French			€ 32	€ 30	€ 25
90	Spanish			€ 32	€ 30	€ 25
91	Latin			€ 38	€ 36	€ 30
92	Mathematics			€ 46	€ 43	€ 36
93	IT			€ 55	€ 52	€ 43



### University advice

We offer a university advice service for our learners at the school who intend to begin a degree course at a German university after their language course. The service includes checking documentation, orientation and help in the selection of suitable universities/subjects, correction of letters of motivation and the CV and assistance with applications.

**Requirement:** Higher education admission qualification in the learner's home country.

**Please note:** documents will be pre-checked. If documentation is insufficient or if there is little chance of a successful application, the service may be withheld.

**Fee:** €200 per university.

### Provisional admission

We offer university application support for learners who have booked an intensive course of at least 12 weeks at our school and require provisional university admission for their visa application. We check the application documents and assist with the preparation of application documents for up to two universities, correction of the letters of motivation/CV and communication with the universities. The processing time for the individual universities can take up to ten weeks; this should be taken into account in the application process.

**Admission requirement:** Evidence of the higher education entrance qualification in the learner's home country.

**Fee:** €550 (including processing fees charged by the respective university.)

A successful application cannot be guaranteed. If the application is rejected by the university, €200 of the administration fee will be refunded. The university's processing fee is non-refundable.



### Support with official administration

We offer customers requiring a visa the following services after arrival: support in almost all official administration matters, convenient registration or re-registration at the town hall, advice and appointment scheduling for opening or activating a bank account, help with organising German health insurance, checking documents for the immigration authorities and general information on extending visas.

**Requirement:** Language course booking of at least 12 weeks.

**Fee:** €275 (individual services, such as registration at the town hall, can also be booked separately for €85.)

### À la carte courses

Parallel to our intensive courses, we organise various special courses in cooperation with local sports clubs, operators and music schools.

**Selected courses:** Football, handball, table tennis, tennis, basketball, field hockey, ice hockey, rugby and other sports, as well as music lessons and floristry. Please note that the practice sessions are invoiced separately. The fee depends on the number of hours booked and, in particular, on the type of activity. For sports lessons all that is normally required is a small fee, payable to the sports club.

**Placement fee:** €325 (successful placement cannot be guaranteed; if no placement is found, €225 will be refunded).

### Piano practice

**Practice session at the school's own piano (Steinway & Sons):** €10 per 60 minutes.

### Language course and internship

Applications for the internship (maximum duration three months, unless offered as training module in conjunction with a vocational training programme) should be made at least eight weeks before the preferred starting date.

**Requirements:** Participation in an intensive course of at least two weeks and knowledge of German (level B1; for an internship at the F+U Academy of Languages level A1 is sufficient). Applicants from third countries must provide a work visa for the internship (e.g. a Working Holiday visa). All applicants must also provide evidence that the internship supports career orientation (orientation internship) or is to be carried out as an accompaniment to training or studies. Supporting evidence may include, for example, a training contract, course enrolment form or school letter of authorisation.

**Placement fee:** €350 (Successful placement cannot be guaranteed. If placement is not possible, 50% of the fee will be refunded; alternatively, the internship can be completed at F+U.)

### Language learning and cultural training

The programme is designed for young people keen to take an active role in our cultural programme, alongside their German course. We strongly recommend participation in the programmes offered by our Japanese Centre and Chinese Centre.

**Administration fee:** €225.

### Cultural programme

Groups are accompanied by a member of school staff; unless otherwise indicated the fee includes only travel and personnel costs. The minimum number of participants for the events is 5. School classes participate in our general programme; separate activities are only organised for an additional fee. Details are available on request.

See page 26 for additional information.

### Childminder service

Parallel childminding service for parents participating in an intensive course: €25 per 45 minutes (two children: €20 per child; three children: €15 per child).



# Map: residences, apartments, sights







## Host families

**Administration fee:** €80; **deposit:** €200 (for deposit refunds please contact us by Wednesday, 16:00).  
**30% supplement for each of the following:** Wi-Fi guarantee; English-speaking host family; full board (breakfast and evening meal with the family; packed lunch).  
**Use of host family's kitchen** for room only bookings: 20% supplement.  
 You will be advised of the name and address of the host family two weeks before moving in, and upon full payment.  
**Host family accommodation:** Laundry once or twice a week.  
 The rental contract can be cancelled with a notice period of six weeks.  
**Move in:** Sundays, 11:00-18:00, **move out:** Saturdays 10:00-18:00 (outside these times: supplement of €35; must be confirmed in advance).  
 In case of delay, please contact your host family.

Category	Distance to school	Meals	Rent per week / room						Extra day <sup>1</sup> Rent per day / room	
			1-4 weeks		5-19 weeks		From 20 weeks		SGL	DBL
			SGL	DBL	SGL	DBL	SGL	DBL		
HF-A	2-30 minutes by public transport <sup>2</sup>	Half board	€ 295	€ 530	€ 245	€ 435	€ 235	€ 415	€ 50	€ 95
		Breakfast	€ 245	€ 445	€ 220	€ 390	€ 210	€ 370	€ 45	€ 85
		Room only	€ 200	€ 380	€ 200	€ 350	€ 190	€ 330	€ 40	€ 75
HF-B	Maximum 50 minutes by public transport <sup>2</sup>	Half board	€ 225	€ 405	€ 210	€ 380	€ 200	€ 360	€ 45	€ 85
		Breakfast	€ 195	€ 350	€ 180	€ 320	€ 170	€ 305	€ 40	€ 75
		Room only	€ 175	€ 310	€ 165	€ 295	€ 155	€ 275	€ 35	€ 70
HF-C	Maximum 70 minutes by public transport <sup>2</sup>	Half board	€ 195	€ 370	€ 180	€ 340	€ 170	€ 330	€ 40	€ 75
		Breakfast	€ 165	€ 315	€ 150	€ 285	€ 140	€ 275	€ 35	€ 65
		Room only	€ 145	€ 275	€ 135	€ 255	€ 125	€ 245	€ 30	€ 55

<sup>1</sup>An **extra day** is invoiced for arrival between on Saturday (15:00 and 20:00) at the host family accommodation, or for late departure on Sunday by 12:00 at the latest (all extra days must be confirmed in advance by F+U).

<sup>2</sup>**Journey time to school (by public transport).** The distance to the bus/tram stop is not included; this is usually just a 5-10-minute walk from the accommodation. Further details are available on request.



Heidelberg Market Square with Town Hall



## Halls of residence

**Administration fee:** €80; **deposit:** €200.  
**Double room bookings** are only available for learners arriving together. **Discount for groups of 10 or more people:** 5% off the listed rent price.  
 All halls of residence have a kitchen.  
**The rental contract can be terminated with a notice period of six weeks plus a €100 termination fee** (see page 43).  
**Booking a residence category:** First, please book your preferred residence category only. Approximately two weeks before your arrival – at the latest by Monday before your arrival – you will be informed of the name of your hall of residence.  
**Guaranteeing a specific hall of residence:** For a one-off charge of €295 we guarantee allocation of your preferred hall of residence, subject to room availability at the time of booking.  
**Postponed arrival:** If your arrival is postponed, e.g. due to a delay in issuing a visa, and if the accommodation is booked to capacity, the originally booked room/residence category can no longer be guaranteed. In this case we reserve the right to offer accommodation in another hall of residence and/or residence category. The price difference resulting from a lower category, and the guarantee fee (where applicable) will be fully refunded. There is no extra charge if an upgrade is necessary! The only possible exception to this rule is if the rent for the booked room is paid from the original moving in date. Termination of the accommodation contract with full refund of the rent already paid is also possible, provided the contract is terminated within 24 hours of moving in.

Cat.	Description	Halls of residence, apartments	Rent per week / room						Extra day <sup>1</sup> Rent per day / room		
			1-4 wks		5-19 wks		From 20 wks		SGL	DBL	
			SGL	DBL	SGL	DBL	SGL	DBL			Triple
A	Shower and WC on corridor; shared kitchen	Concordia, Schmitt	€ 130	-	€ 115	-	€ 105	-	-	€ 45	-
B	Shower in room, WC on corridor, shared kitchen	Schmitt	€ 145	€ 215	€ 140	€ 195	€ 125	€ 175	-	€ 50	€ 70
C	The hall of residence is located in Heidelberg's Old Town; two rooms each share a shower, WC and kitchenette.	März	€ 230	€ 345	€ 195	€ 290	€ 150	€ 220	Prices on request	€ 60	€ 85
D	Excellent location, directly on Bismarckplatz, 200m from the school	F+U Hotel Denner	€ 265	€ 420	€ 225	€ 365	€ 175	€ 275		€ 70	€ 95
E	Good location (Bergheim and Old Town), small apartments with 1 or 2 rooms, shower, WC and kitchenette en suite.	Campus <sup>2</sup> , März <sup>3</sup>	€ 265	€ 420	€ 225	€ 365	€ 175	€ 275	-	€ 70	€ 95

<sup>1</sup>**Extra days** are invoiced for arrival on Saturday or departure on Sunday (all extra days must be confirmed by F+U).

<sup>2</sup>The F+U Campus hall of residence is a new building; 150 rooms are available for our learners.

<sup>3</sup>The two-room apartments can accommodate up to four people. Supplement for a third person: €150 / week; for a fourth person: €125 week.

Residence category	Name	Heidelberg district
A	Schmitt	Kirchheim
	Concordia	Südstadt
B	Schmitt	Kirchheim
C	März	Old Town (500 m from the school)
D	F+U Hotel Denner	City centre (200 m from the school)
E	F+U Campus	Bergheim (by central train station)
	März	Old Town (500 m from the school)



**Please note:** The halls of residence are available to our learners **all year round**. Due to the high demand, we recommend booking accommodation as soon as possible, as well as for the entire duration of your language course. If accommodation in a category is fully booked, we reserve the right to allocate a room of the same standard in external halls of residence.

**Room changes:** Occasionally, for reasons such as group arrivals, renovation work and postponed arrivals caused by visa delays, we may be unable to guarantee occupation of the same room for the entire duration of your language course, unless guaranteed in the terms of your booking. We hope you will understand if, in such circumstances, we need to offer an alternative room in a hall of residence in the same category. Please keep in mind that the accommodation confirmation refers only to the specified category, not to a specific hall of residence or room.





Heidelberg in the evening sun

# Guest houses, hotels, meals, transfer, parking

## Guest houses, holiday homes, hotels, youth hostel

Referral fee: €175.  
**Guest houses, holiday homes:** Prices on request; weekly rates depends on size, location in the city, furnishings and season; rates from €300 to €1500.  
**The F+U Bayrischer Hof Hotel\*\*\*:** The Bayrischer Hof, one of the most tradition-steeped hotels in the city, is located on Bismarckplatz, just 150m from the school and the Old Town (single rooms from €100 per night; double rooms from €130 per night).  
**Hotels** in all price categories are located close to the school.  
 Rooms can also be booked in Heidelberg's attractively situated **youth hostel**.



F+U Hotel Bayrischer Hof

## Meals

All halls of residence and apartments are equipped with a kitchen. Host families provide meals as specified in the booking.  
**Meals in partner restaurants (Sun-Sat): Lunch\*:** €110 per week; **evening meal\*:** €125 per week (\*incl. 1 soft drink)  
**Lunch in our school canteen** (July and August only): €95 per week (Mon-Fri)  
 You can also have a meal for about €6 in the **University of Heidelberg refectory (Mensa)**, just ten minutes' walk from the school.

## Transfer to accomodation

Transfer to / from accomodation (to be booked by Thursday, 14:00, before arrival or departure).

Price per person	Heidelberg central train station		Mannheim central train station		Frankfurt am Main airport		Stuttgart / Baden-Baden-Karlsruhe airport		Hahn / Strasbourg / Saarbrücken airport	
	One way	Both ways	One way	Both ways	One way	Both ways	One way	Both ways	One way	Both ways
Distance	2 km		20 km		80 km		120 km / 95 km		160 km / 140 km / 160 km	
Route	One way	Both ways	One way	Both ways	One way	Both ways	One way	Both ways	One way	Both ways

Transfer for 1 person, 2 people, 3 people, 4-7 people or from 8 people.  
 Please ask us for the current transfer fees. During the pandemic these can only be determined on a daily basis.

## Parking\*

Parking is available in the unsupervised car park at the Concordia hall of residence for €25 per week. There is public, paid parking available in the school building (approx. €150 per month).  
 \*Advance booking required.





## 24-hour telephone service

You can reach us round the clock, seven days a week on +49 6221 9120-38.



## Arrival and departure

**Move in:** Sundays, 10:00-22:00. After 22:00 (00:00 at the latest) moving in is only possible with prior agreement and payment of a €50 supplement. On Saturday (13:00-18:00) moving in is possible only with prior agreement and payment of an extra day's rent (see page 39).

Please inform us of your exact arrival time no later than Friday (14.00) before you move in. If you inform us any later, we will not be able to guarantee the handover of the key at your preferred time.

In case of delay, please call our weekend team on +49 162 29333-26.

**Move out:** Saturdays, by 12:00. On Sunday (by 10.00 at the latest) moving out is only possible with prior agreement and payment of an extra day's rent (see page 39).

## Halls of residence have a 'student' character

Accommodation rates for halls of residence and apartments are calculated to reflect both location (distance to school, attractiveness of the district) and the furnishings/facilities of the accommodation. However, please bear in mind that all our halls of residence and apartments have a 'student' character, including those in higher categories.

## Internet, PC use, fitness room

**Most halls of residence and the apartments are equipped with Internet access.** We provide Internet access free of charge. Please note that it is not a high-speed Internet connection. Now and then demand for accommodation exceeds our supply of 370 rooms, in which case we rent additional rooms and apartments. Information on their Internet facilities is available on request. Compliance with German Internet law is required at all times. There may be temporary disruption to Internet provision.

**You can also use the computers in our school, with free Internet access** (50 computers in three IT rooms); Wi-Fi is also available from 07:30 to 19:00 Mondays to Fridays and on Saturdays from 10:00 to 16:00.

If you lock yourself out of your room we can provide a **spare key** on payment of a deposit. Please note that this service is only available during the following office hours: Monday to Friday: 08:30 to 18:30; Saturday: 10:30 to 15:30. Outside these times you will need to call a professional locksmith at your own cost (from €70, depending on the service provider).

A **laundry, a lounge and a small fitness room** are available for residents at the F+U Campus halls of residence.

## Cleaning the room and communal areas

Please note that for the entire duration of your stay you are responsible for cleaning your room. When you vacate the room, it must be clean and tidy. The occupant must remove furnishings that do not belong to the room and/or bulky rubbish before moving out. Kitchens and bathrooms are to be left clean. Communal areas are cleaned up to twice a week by F+U.

## Laundry facilities and cooking utensils

**Halls of residence/apartments:** Washing machines and tumble dryers are provided.

**Bed linen and towels:** Bed linen is provided on arrival only; please bring your own towels.

**Cooking utensils, cutlery and crockery** can be hired, subject to availability, for a deposit of €40 plus a service charge of €25 (the deposit is refunded upon the return of complete, clean sets).



## Rental contract extension, accommodation transfer, cancellation, booking changes (halls of residence, apartments, host families)

**Applications to extend the rental period must be made four weeks in advance of the contract's expiry.**

An extension of the rental contract for the same room cannot be guaranteed. If, despite observance of the four-week notice period, the current room or booked category has already been reallocated, we guarantee the availability of a room in an alternative hall of residence or in another category. In this instance, the fee for changing accommodation will be waived.

Extension requests received less than 14 days before contract expiry are subject to a processing fee of €50.

**Accommodation transfer (at own request):** €60.

**Termination of the rental contract:** If the contract parties conclude a rental contract for a fixed term, any earlier ordinary termination of the rental contract is generally excluded (§ 542 II BGB – German Civil Code). However, as a gesture of goodwill we permit the termination of the rental contract subject to the following conditions of notice:

- By Tuesday, 15:30 after moving in: Cost: one week's rent.
- After this time, termination of the contract is only possible with six full rental weeks' notice (Sunday to Saturday), plus a €100 termination fee.
- The administration fee is non-refundable.
- The weekly rental price will be adjusted after notice of the shortened rental period.

If termination of the contract is confirmed by F+U, rent prepaid for the period after the amended contract expiry will be refunded, minus the fees listed in points a, b and c above. Notice of the termination must be submitted in writing during accommodation office opening hours (room 10, Monday to Friday, 12:15-15:30).

**Changes to accommodation type** from host family to hall of residence or from hall of residence to host family are possible subject to availability and a notice period of two weeks.



F+U Campus hall of residence, category E



F+U Campus hall of residence, category E



F+U Campus hall of residence, category E



F+U Campus hall of residence, category E



Concordia hall of residence, category A



Concordia hall of residence, category A



März hall of residence, category D+E



März hall of residence, category D+E







## HPC International Boarding School

- For young people aged 14 and over
- 24-hour supervision • individual support • central location
  - pedagogically qualified staff
  - single rooms, shared bathrooms
    - Internet connection
  - diverse leisure programme
    - 24/7 telephone service
- participation in language courses at the F+U Academy of Languages or school programmes at the HPC

Tel. +49 6221 912035 • [boardingschool.hd@fuu.de](mailto:boardingschool.hd@fuu.de) • [hpc-international.de](http://hpc-international.de)



## HPC schools

- Bilingual primary school • Realschule secondary school
  - Bilingual Gymnasium • Vocational Gymnasium from class 8 and class 11 • Vocational colleges
    - International School IB®
  - Jenaplan-Schulprofil LernZeitRäume



Tel. +49 6221 7050-4038 • [heidelberg@fuu.de](mailto:heidelberg@fuu.de) • [hpc-schulen.de](http://hpc-schulen.de)



## Technical College Centre Nursing care - Healthcare - Education - Social care

- Geriatric care assistant • Nursing specialist
  - Workplace education instructor • Workplace education teacher • One-year Vocational College of Social Education
  - Educational support worker<sup>1</sup> • Educational support worker specialising in youth and residential care<sup>1</sup> • Childcare worker
  - Healthcare educationalist<sup>1</sup> • Healthcare support worker<sup>1</sup>
    - Physiotherapist<sup>1</sup> • Occupational therapist<sup>1</sup>
- <sup>1</sup>New! Two qualifications in just four years:  
Technical college qualification - bachelor degree



Tel. +49 6221 7050-4131 • [info@fuu.de](mailto:info@fuu.de) • [fachschulzentrum.de](http://fachschulzentrum.de)

## Bachelor's and Master's degrees, further education, language training

Study models CLASSIC | DUAL | DISTANCE

**BA Business Administration** in 13 specialisations

**BA International Management**

**MA Business Management & Development**

**MA Business Psychology**

Business Coaching | Business Consulting

- Maximum flexibility with our three study models
- Wide selection of cooperating companies in dual studies
- Individual support, careers service, international office

# VICTORIA

INTERNATIONAL UNIVERSITY  
OF APPLIED SCIENCES

VICTORIA | International University  
of Applied Sciences

Bernburger Str. 24-25 | 10963 Berlin

Phone: +49 30 206176-63

Email: [info@victoria-university.de](mailto:info@victoria-university.de)

[victoria-university.de](http://victoria-university.de)

## Make it in GERMANY

Dual bachelor programmes

**iba** | Work and study  
in Germany



Your dual work-study degree at  
11 campuses across Germany

+49 162 2933320

[international@ibadual.com](mailto:international@ibadual.com)

[ibaDual.com/Foundation](http://ibaDual.com/Foundation)

## FOUNDATION PROGRAMME "WORK & STUDY GERMANY"

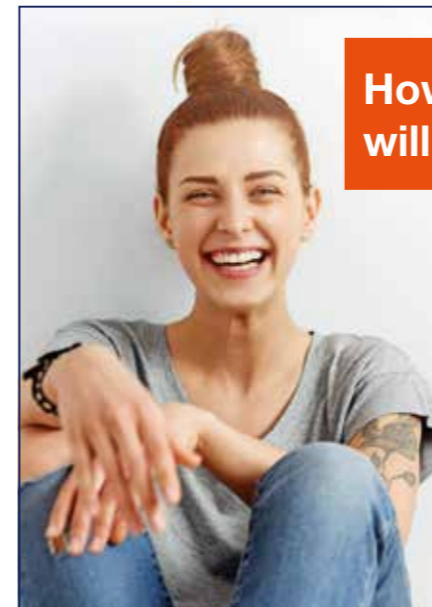
for international students

MANAGEMENT

SOCIAL WORK

HEALTH

TECHNOLOGY



## How much head start will you give yourself?

- Shorter course duration (requires previous training in care or social work)
- Optimum compatibility of training/profession and study
- Close integration of theory and practice

Phone: +49 6221 7050-2400

Email: [beratung@isba-studium.de](mailto:beratung@isba-studium.de)

**isba** | Arbeit und Studium  
klug kombiniert.

UNIVERSITY  
of Cooperative Education

## Career-integrating bachelor degree programme

for international skilled workers

- Organisation and Social Pedagogy
- Physician Assistant
- Vocational pedagogy\* \*Accreditation in preparation

[isba-studium.de](http://isba-studium.de)





Are you interested in studying in Germany? At the F+U universities (iba, isba, Victoria) we offer classical and distance study models and a variety of bachelor degree programmes.

In the dual study programme, students learn theory in the university and receive continuous practical training with one of our partner companies. They graduate with a state-recognised bachelor degree.

To prepare for the course, international prospective students can complete one of our online preparatory programmes. These take between 6 and 10 months. Beginners in the German language are also able to join these preparatory programmes. A recognised certificate of secondary education from the student's home country is required. Applicants with a secondary education certificate that is not officially equivalent to the German Abitur can take the preparatory programme instead of a Studienkolleg course.

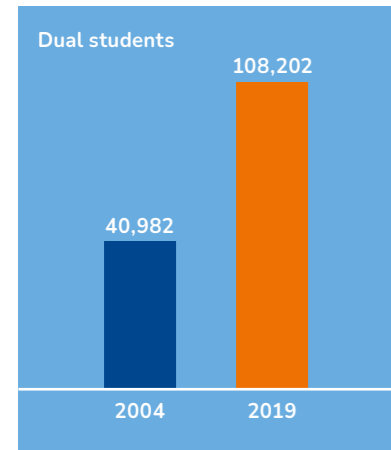
**Possible course subjects\*:** Business Administration with 14 specialisations (e.g. hotel and tourism management, catering management etc.); Informatics & Management; Engineering & Management, Social Pedagogy & Management; Physician's Assistant.

**Possible course locations\*:** Heidelberg, Berlin, Chemnitz, Cologne Darmstadt, Freiburg, Hamburg, Munich and more  
\*subject to availability



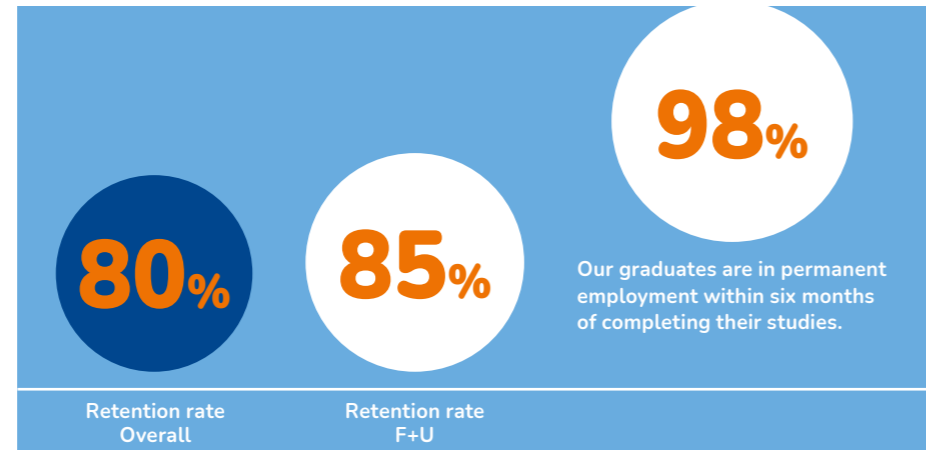
## Dual study in figures

Enormous growth in demand for dual study places



Source: AusbildungPlus database (Status: January 2019)

High retention rate for dual students = high level of company satisfaction with students and the study model



Source: iba retention study (Status: May 2017)

## Benefits of dual study at F+U

- Excellent career prospects after graduation.
- You receive a monthly allowance to cover your living expenses.
- The practice companies cover the degree programme tuition fees. You only pay the costs of language and subject-based preparation before the programme.
- Special offer for language learners at the F+U Academy: If you are accepted by one of our universities (of applied sciences or cooperative education) you will receive will receive a refund of 25% of the preparatory language course fees after successful enrolment (see page 18, intensive courses German).
- Applicants without a university entrance qualification equivalent to the Abitur can qualify for their degree programme during the language course (this replaces the Studienkolleg preparatory course).
- A provisional offer of university admission can be made for applicants requiring a visa.



## Option 1: Preparatory programme for learners with equivalent university entrance qualification\*

Foundation Programme WORK & STUDY GERMANY				
	Phase 1 March - May / September - November	Phase 2 June - August / December - February	Phase 3 September / March	Starting October / April
Preliminary German course (A0 - A2)	German course (B1 - B2.1) 20 hours/week; 12 weeks	German course (B2.2 - C1) 20 hours/week; 12 weeks	Work-based learning at a German company (optional)	Dual work-study Bachelor's programme
	Nanodegree: Digital Business*			Business Administration (BA) / Informatics & Management (BSc) (180 ECTS)
	Current digitalization technologies Management information systems (5 CP) 5 hours/week; 12 weeks	Programming paradigms & application Insights into Artificial Intelligence (5 CP) 5 hours/week; 12 weeks		
	Preparing for Practice (Workshops Work & Study; Career Coaching)	Preparing for Practice (Finding a Partner Company; Virtual Recruiting Fair)		

\*Subject to change.

## Option 2: Preparatory programme for learners without equivalent university entrance qualification

(can replace Studienkolleg preparatory college)\*

Foundation Programme WORK & STUDY GERMANY				
	Phase 1 March - May / September - November	Phase 2 June - August / December - February	Phase 3 September / March	Starting October / April
Preliminary German course (A0 - A2)	German course (B1 - B2.1) 20 hours/week; 12 weeks	German course (B2.2 - C1) 20 hours/week; 12 weeks	Work-based learning at a German company (optional)	Dual work-study Bachelor's programme
	Nanodegree: Business Essentials (in German)*			International Business Management (BA) (180 ECTS)
	Interactive Language Training; German for Professional Purposes (10 CP) 10 hours/week; 12 weeks	Business & Management Principles; Business Mathematics (10 CP) 10 hours/week; 12 weeks		
	Preparing for Practice (Workshops Work & Study; Career Coaching)	Preparing for Practice (Finding a Partner Company; Virtual Recruiting Fair)		

\*Subject to change.

## Partner companies







## State-recognised vocational college for foreign languages – full-time programmes in Heidelberg – now eligible for funding with an education voucher

Vocational training in foreign languages opens up diverse, stimulating and, above all, future-proof career prospects. In addition to the foreign language qualification programme you also receive training that leads to qualifications in the fields of commerce and IT. These interdisciplinary qualifications are highly sought after in commerce, in national and international organisations and academic institutions, as well as in the service sector. **The Multilingual Correspondence Clerk (Welthandelskorrespondent\*in) programme deserves special attention. On this course, students learn three key European languages (English, French and Spanish) and gain language skills in Russian, Chinese or Japanese.**

The registration fee is €100. The examination fees and cost of course material are not included in the quoted course fees.

The following languages are state recognised: Chinese, English, French, Japanese, Russian, Spanish and German as a foreign language.

Other possible examinations: IHK Chamber of Trade and Commerce for English, French, Spanish; HSK for Chinese, JLPT for Japanese, TRKI for Russian.

Start: 13.09.2021; 12.09.2022

Start for online-only training course: 07.03.2022

Entry requirements for the state-recognised qualification: Intermediate secondary school certificate, German language skills at level C1 and English language skills at level B1 (language certificates should not be more than two years old).

Programme funding: Student-BaföG, education voucher, student loan; other benefits: child support, installment payments<sup>1</sup>.

Training programme / language(s)	Fee <sup>1</sup>	Duration	Start
Foreign Language Correspondence Clerk (one language) English	€ 3257	1 year	September
Foreign Language Correspondence Clerk (two languages) English and French or Spanish or German as a foreign language	€ 6846	2 years	September
Foreign Language Correspondence Clerk (two languages) English and Chinese or Japanese or Russian	€ 7728	2 years	September
Foreign Language Correspondence Clerk (three languages) English and French or Spanish + Chinese or Japanese or Russian	€ 8722	2 years	September
European Secretary (three languages) English + French + Spanish	€ 8280	2 years	September
Multilingual Correspondence Clerk (four languages) English and French and Spanish + Chinese, Japanese or Russian	€ 9936	2 years	September

<sup>1</sup>Payment by instalment is possible; further information is available on request.

## Preparatory course: German as a foreign language

Prospective students with language skills lower than German C1 and / or English B1 have the possibility to complete a preparatory course ahead of the training programme in order to achieve the required language level (German C1 and/or English B1).

### Preparatory semester one: German as a foreign language

Entry level: A1; target level: B2; duration: 30 weeks of 30 TH per week; start: First Monday in September

If you already have some knowledge of German, you can join the appropriate course level on the first Monday of every month, throughout the year.

Fee\*: €4,500 in-class at our school in Heidelberg; €2,800 in online lessons, in the comfort of your own home (wherever you live).

For mid-course entry, the fee is lower, taking into account the existing language level and shorter duration of the course; see the fees table on page 18. (\*The cost of books is not included.)

German classes: Monday - Friday, 09:00-10:30 + 10:45-12:15 + 13:00-14:30.

### Preparatory semester two: German as a foreign language + other foreign languages

Entry level: B2 / C1; duration: 16 weeks of 30 TH per week; start: First Monday in May

If you already have some knowledge of German, you can join the appropriate course level on the first Monday of every month, throughout the year.

Fee: €2,480 in-class at our school in Heidelberg; €1,800 in online lessons, in the comfort of your own home (wherever you live).

For mid-course entry, the fee is lower, taking into account the existing language level and shorter duration of the course; see the fees table on page 18. (\*The cost of books is not included.)

German classes: Monday - Friday, 09:00-10:30 + 10:45-12:15.

Commercial correspondence classes: Monday + Thursday, 13:00-14:30.

Business German classes: Tuesday + Wednesday + Friday, 13:00-14:30.

Preparation for English level B1: Please see the courses offered from page 22.



Heidelberg Neckar (62km) with view of the Old Town and the castle





Heidelberg Old Town in winter

# Participant statistics 2019

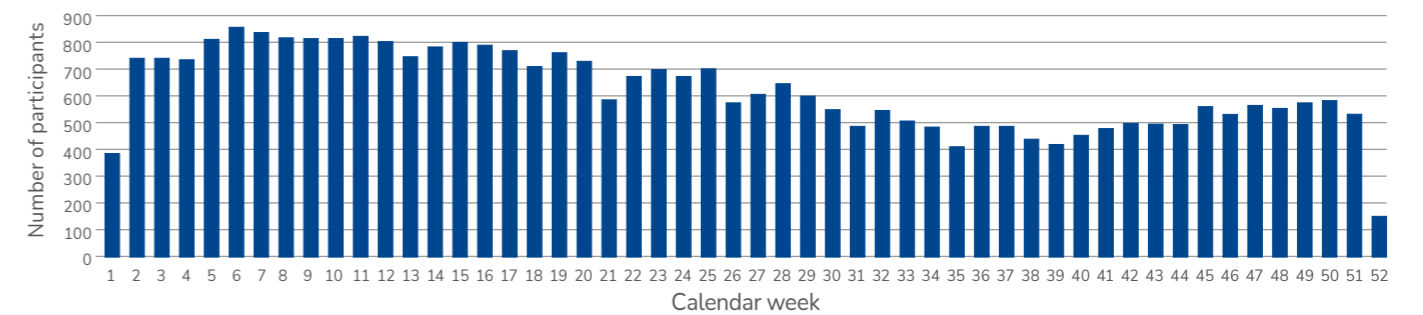
## Course participants: 8,925; exam candidates: 2,365; nationalities: 115

In 2019 an average of 860 learners per week took part in our language courses (main, module and evening courses, as well as individual lessons), in training programmes offered by our Vocational College for Foreign Languages and in our company training. In total, approximately 8,925 learners participated in our language programmes. The average course duration was 5.3 weeks. Meanwhile, language exams were taken by approximately 2,365 candidates. A total of around 10,640 learners completed courses and exams at our language school in 2019. Participants came from 115 different countries.

**Around 80% of our learners came from these 20 countries\*:** Germany, People's Republic of China, Mexico, Japan, Turkey, Italy, Spain, Russian Federation, Tunisia, India, Switzerland, USA, Israel, South Korea, Ukraine, Bulgaria, Brazil, Syria, Cyprus, Czech Republic. \*Proportion of the total number of learners at our Academy of Languages Heidelberg.

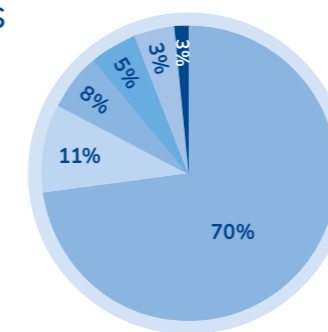
**Our school's exceptional internationality is reflected in the complete list of all other 95 countries of origin:** Afghanistan, Algeria, American Oceania, Argentina, Armenia, Australia, Austria, Azerbaijan, Bahrain, Belarus, Belgium, Bosnia and Herzegovina, Botswana, Cambodia, Cameroon, Canada, Chile, Colombia, Congo, Costa Rica, Croatia, Cuba, Denmark, Dominican Republic, Ecuador, Egypt, El Salvador, Eritrea, Finland, France, Gambia, Georgia, Ghana, Great Britain and Northern Ireland, Guatemala, Honduras, Hong Kong, Hungary, Iceland, Indonesia, Iran, Iraq, Ireland, Ivory Coast, Jordan, Kazakhstan, Kenya, Kuwait, Kyrgyzstan, Lebanon, Libya, Lithuania, Luxembourg, Macedonia, Malaysia, Mauritius, Moldova, Mongolia, Montenegro, Morocco, Myanmar, Namibia, Nepal, Netherlands, New Zealand, Nigeria, Norway, Pakistan, Palestine, Peru, Philippines, Poland, Portugal, Romania, Saudi Arabia, Senegal, Serbia, Sierra Leone, Singapore, Slovakia, Slovenia, Somalia, South Africa, Sweden, Taiwan, Tajikistan Thailand, Togo, Trinidad and Tobago, Turkmenistan, Uganda, United Arab Emirates, Uzbekistan, Venezuela, Vietnam, Yemen, Zambia.

## Number of course participants by calendar week – main, module and evening courses, individual lessons



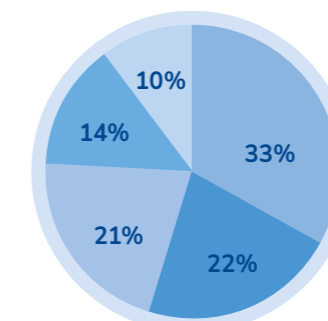
## The most popular courses

Intensive course German	70%
Intensive course English	11%
Evening courses	8%
Individual lessons	5%
Professional foreign languages	3%
Junior courses	3%



## Examination candidates

TestDaF	780	33%
telc	522	22%
TestAS	495	21%
TOEFL, IELTS	325	14%
TOEIC, in-house tests, OnSET	243	10%
<b>Total</b>	<b>2,365</b>	<b>100%</b>







Our language school is located in the Darmstädter Hof Centrum, Hauptstrasse 1 (Old Town)



**Language courses in Heidelberg**

Arabic, Brazilian Portuguese, Bulgarian, Chinese, Croatian, Czech, Dutch, English, French, German, Greek, Hungarian, Italian, Japanese, Polish, Portuguese, Romanian, Russian, Spanish, Swedish, Turkish and more

**International test centre**

TestDaF, telc, ECL, TOEFL®, TOEIC®, IELTS, OnSET, TestAS and more

**State-recognised vocational college for foreign languages**

Foreign Language Correspondence Clerk, European Secretary, Multilingual Correspondence Clerk, Translator

**Technical Colleges**

Elderly Care Support, Healthcare Support, Occupational Therapy and more

**Contact**

F+U Academy of Languages gGmbH

Hauptstrasse 1  
D-69117 Heidelberg  
Tel.: +49 6221 7050-4048  
Fax: +49 6221 23452

**Telephone service, 24/7:**  
Tel.: +49 6221 9120-38

languages@fuu.de  
[www.academy-languages.de/en](http://www.academy-languages.de/en)

**academy24**

Business Administrator, Business Economist and more

**Heidelberg Private School Centre**

Gymnasium and Realschule secondary schools, bilingual primary school, bilingual Gymnasium, vocational schools, International Baccalaureate®

**International Universities of Cooperative Education**

Bachelor degree programmes in the dual study system, preparation for the alternative Feststellungsprüfung university entrance exam (W course)

**International University of Applied Sciences**

Bachelor and master's degree programmes – dual, full-time or distance

